



PRESS RELEASE

info@cbs.gov.il

http://www.cbs.gov.il

FAX. 02-652 1340

Jerusalem,
August 13, 2008
156/2008

Previous Press Release on Foreign Trade appeared on July 13, 2008

Israel's Foreign Trade – July 2008

As of July 15 2008, the new Taarif of exports came into force. In the Tariff, changes have been made in the codification of the goods (from 7 to 8 digits), as in the harmonization according to the international classification of goods or Harmonized System 2007.

*As a result of the changes mentioned above, the Central Bureau of Statistics has prepared a correspondence table **between the old system of codes**, used so far, and **the new codes** that have entered into force.*

The changes also affect the data presented by other classifications: by economic industry and by SITC¹.

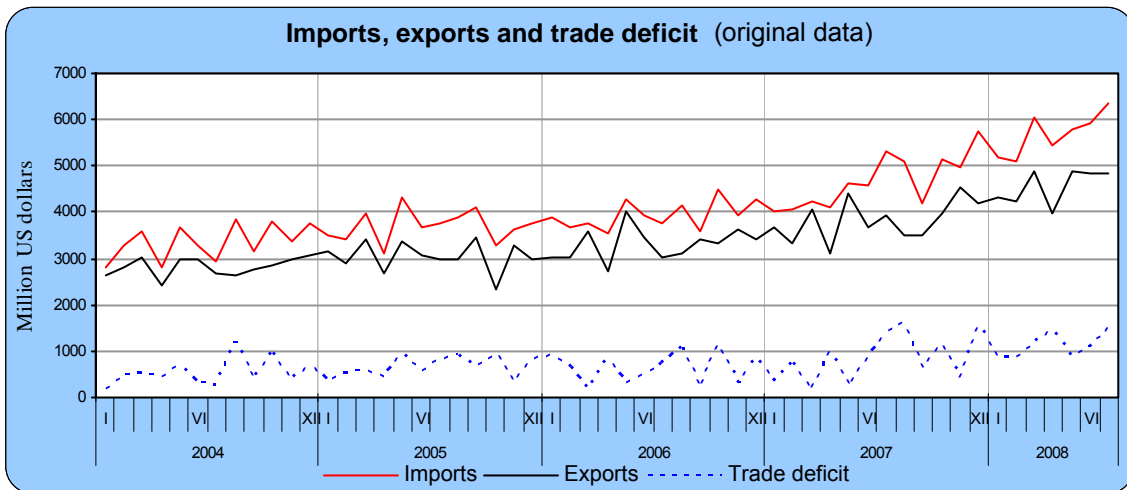
*It was pointed out that as a result of **the changes in the various classifications**, **there might have occurred some changes in the data included** in the various segments in the period from January to June this year, besides corrections and updates **been made each month**.*

*Data regarding imports **remain regardingly unchanged except those which are updated on an ongoing basis every month**.*

In July 2008, **import of goods** totaled \$6.4 billion, **export of goods** totaled \$4.8 billion and the **trade deficit** totaled \$1.5 billion.

The above is based on **temporary data** regarding goods that cleared Customs, not including trade between Israel and the Palestinian Authority. Final data for 2008 will be published on May 2009. In addition, the data do not include import and export of services that include, among others, software. Data on all exports and imports of goods and services are published as part of the Balance of Payments, every quarter.

¹ Standard International trade Classification



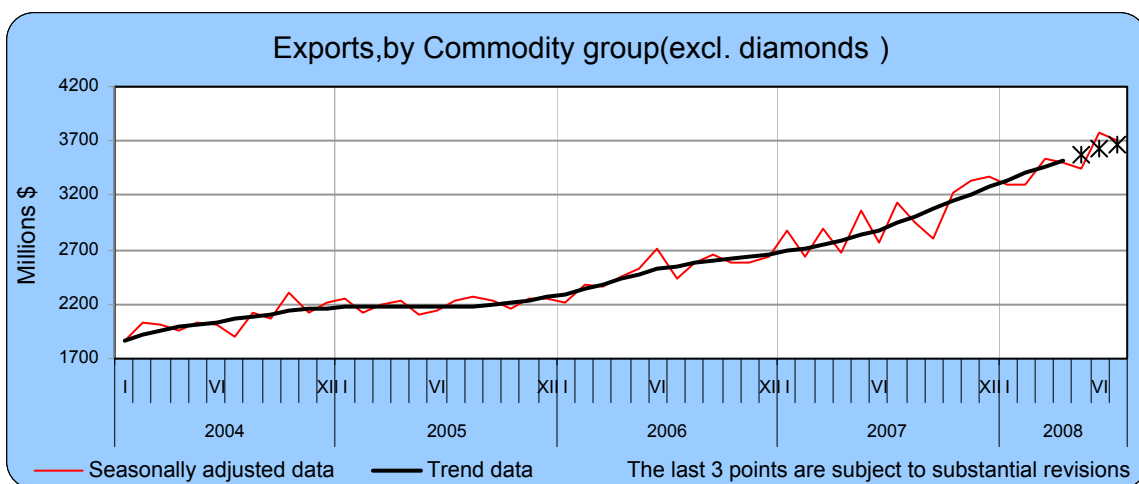
Development of trade in goods in July 2008, compared with June, was influenced by changes in the value of the U.S.A. Dollar against other currencies in which **import and export** transactions are conducted. Compared to the Euro the U.S.A. Dollar dropped by 1.5%, compared to the UK Pound dropped by 1.3%, compared to the Swiss Franc dropped by 1.2% and compared to the Japanese Yen the U.S.A. Dollar dropped by 0.2%.

The trend data calculated by the Central Bureau of Statistics, seasonally adjusted and adjusted for irregular elements, point to a rise of **export of goods** (excluding diamonds) of 16.8% and **imports of goods** of 14.0%, at an annual rate, during May-July 2008.

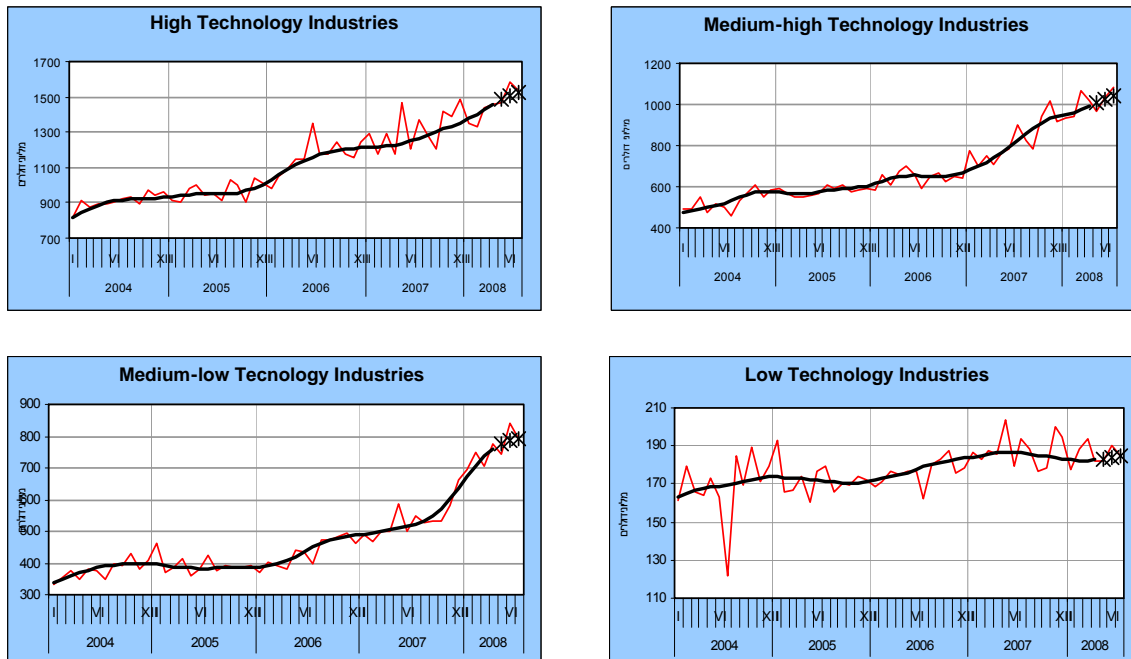
BREAKDOWN OF THE FINDINGS:

Export of Goods

In July 2008, manufacturing exports (excluding diamonds) constituted 73% of all export of goods. Export of diamonds constituted 25%, and the 2% was agricultural exports.



Distribution of **manufacturing exports by technological intensity** (excluding diamonds), indicates that **high technology industries** constituted 42% of it in July 2008 (\$1.5B.). Trend data of **exports by high technology industries** point to a rise of 18.1%, at an annual rate, in May-July 2008.



— Trend data — Seasonally adjusted data The last 3 points are subject to substantial revisions

Exports by medium-high technology industries (31% of total manufacture exports) in July 2008 totaled \$1.1 B. Trend data of **exports by medium-high technology industries** point to a rise of 23.4%, at an annual rate, in May-July 2008.

Exports by medium-low technology industries (21% of all manufacture exports) in July 2008 totaled \$0.8 B. Trend data of **exports by medium-low technology industries** point to a rise of 18.1%, at an annual rate, in the last three months.

Exports by low technology industries (5% of all manufacture exports) in July 2008 totaled \$0.2 B. Trend data of exports by low technology industries point to a rise of 4.9%, at an annual rate, in May-July 2008.

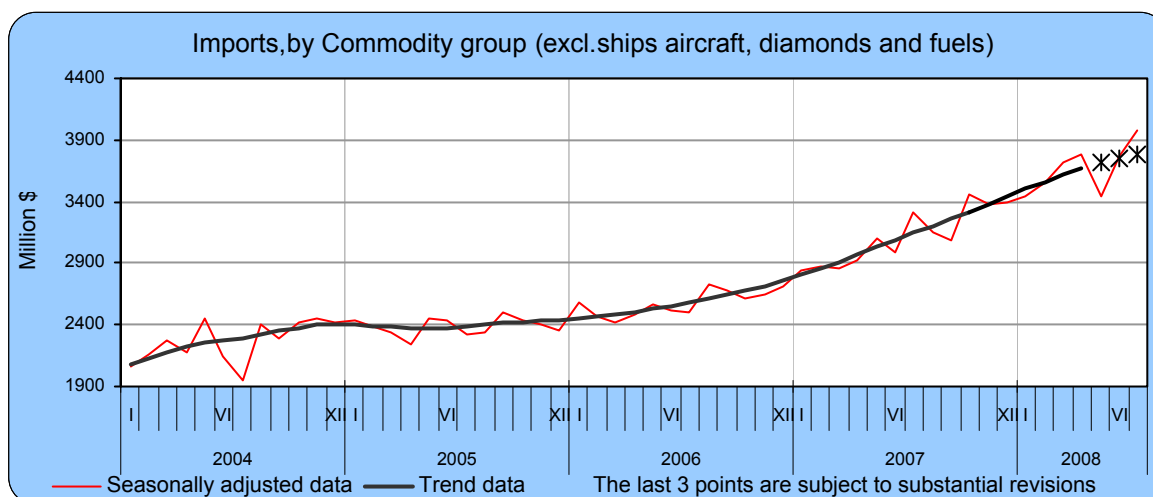
Export of diamonds (polished and rough) in January -July 2008 totaled 7.2 higher by 14.9% than January-July 2007.

Agricultural exports in January -July 2008 totaled \$823M (temporary data) – lower by 4.8% than January-July 2007.

Import of Goods

Import of goods, in current prices in U.S. dollars, totaled – as mentioned - \$6.4 B.

A breakdown of the data of **import by use** indicates that in July 2008, 37% of total imports were **import of raw materials** (excluding diamonds and fuels); 14% was **machinery, equipment and land vehicles for investment**; 13% was **consumer goods**, and the rest **diamonds, fuels and ships and aircraft**.



Import of raw materials (excluding diamonds and fuels) in July 2008 totaled \$2.3B. A breakdown of trend data reveals that in May-July 2008, **import of raw materials** rose by annual rate of 21.9%. A breakdown by groups of **import of raw materials** in the last three months, points to a rise of 37.7% in the **import of chemicals**.

Import of investment goods (excluding ships and aircraft) in July 2008 totaled \$0.9 B. A breakdown of trend data indicates that in May-July 2008, **import of investment goods** rose by an annual rate of 5.7%. A breakdown by groups points that **import of machinery and equipment** point to a rise of 7.4% in the last three months.

Import of consumer goods in July 2008 totaled \$0.8 B. A breakdown of trend data indicates that in the last three months, **import of consumer goods** dropped by an annual rate of 2.2%. **Import of non-durable goods** rose by an annual rate of 17.7%. Most of the rise was recorded in **import of clothing and footwear** (29.3%). **Import of durable goods** dropped, by an annual rate of 19.7% during the last three months.

Import of diamonds (rough and polished) in January-July 2008 totaled \$6.0 B, a rise of 15.0% compared to the same months in 2007.

Import of fuels (crude oil, distillates and coal) in January-July 2008 totaled \$8.1 B. During the same months in 2007 the import of fuels totaled \$4.6 B.

Next Press Release on Israel's Foreign Trade will appear on September 11, 2008.

Related links and publications

Definitions and explanations:

http://www1.cbs.gov.il/reader/fr_trade/intro_eng.pdf

“Foreign Trade Statistics Monthly”

http://www1.cbs.gov.il/reader/fr_trade/ftmenu_e_v1_new.htm

“Israel’s Foreign Trade by Countries” – Press Release

http://www1.cbs.gov.il/www/hodaot2008n/16_08_138e.pdf

“Foreign Trade Price Indices” – Press Release

http://www1.cbs.gov.il/www/hodaot2008n/16_08_121e.pdf

“Imports by Country of Origin” – Press Release

http://www1.cbs.gov.il/www/hodaot2008n/16_08_141e.pdf

“Foreign Exchange Rates” – Press Release (Hebrew only)

http://www1.cbs.gov.il/www/hodaot2008n/16_08_001.pdf

“Trade Balance by Technological Intensity” – Press Release
http://www1.cbs.gov.il/www/hodaot2007n/16_07_134e.pdf
“Exports by Country and Industry, 2000-2006” – Press Release
http://www1.cbs.gov.il/www/hodaot2007n/16_07_192e.pdf
“Foreign Trade of Israel” – Statistilite Series No 41
http://www1.cbs.gov.il/www/statistical/trade_41_e.pdf
"Foreign Trade of Israel- Selected countries 2005" Statistilite Series No 66
http://www1.cbs.gov.il/www/statistical/ftrade2005_e.pdf
“Israel’s Foreign Trade-2007” (Presentation)
http://www1.cbs.gov.il/www/hodaot2008n/16_07_003maz.pdf
Exports, by Commodities and Countries, 1996-2007 (CD only)
Imports, by Commodities and Countries, 2007 (CD only)
Imports, by Commodities and Countries, 2002-2006 (CD only)
Imports, by Commodities and Countries, 1996-2001 (CD only)

DEFINITIONS AND EXPLANATIONS

The Population Investigated

1. Imports and exports are recorded according to the "Special System"², by which only that portion of the trade flowing through customs is included. Accordingly, imports do not include goods imported and stored in bonded warehouses, and exports do not include goods exported from these warehouses. Neither included are goods in transit.
 - a. **Gross imports** include consignments imported from abroad for local use (including finishing and repair) which are freed by the Customs immediately after unloading, or which were freed after a time from the bonded warehouses of the Customs. Import data do not include commodities put into bonded warehouses, except for a number of productive enterprises, which are recognized as bonded warehouses. Imports do not include consignments which were exported in the past and which were returned to Israel without any further processing.
 - b. **Net imports** are obtained by deducting from gross imports the value of goods imported earlier and returned to a supplier abroad without processing or changing its form. As there is no way of identifying the date of entry of the goods to Israel which are being returned abroad, the deduction is done on the date of return abroad. For this reason the returns are deducted from the grand total and not from items detailed by branches.
 - c. **Gross exports** include the flow of products abroad, except consignments of commodities which were previously imported and then returned to a supplier abroad without any processing. It also includes part-finished goods which are sent abroad for additional processing and which eventually will be returned to the sender, and goods which were imported and sold to abroad without processing, when the purchaser is not the supplier.
 - d. **Net exports** are obtained by deducting from the value of gross exports the value of goods, which were previously exported but were returned to the Israeli supplier without processing or change of form. As there is no means of identifying the original date of consignment abroad of exports returned from abroad, the deduction operates on the date of return rather than the date of original export. For this reason returns are deducted from the grand total and not from items detailed by branches (excluding diamonds).
2. The date of statistical registration of the import is the date of the release of the goods by the Customs authorities, whereas for exports it is the date of loading the goods on ship, airplane, or trucks (land transport to Jordan).
3. Foreign trade statistics include, among others, the following goods and business activities:
 - a. Personal import and export: personal effects of immigrants, seamen, returning residents and foreign diplomats (import) and of emigrants (export).
 - b. Parcels dispatched by mail (in recompense or as gifts).
 - c. Ships and aircraft are included in import and export data whether they have passed through Customs or not. Imports include ships purchased from abroad by Israeli companies and sailing under Israeli flag or a foreign flag. It should be noted that ships and aircraft do not undergo the procedure of passing through Customs.

Exports include ships and aircraft, which were produced in Israel and those, which were previously purchased and later resold abroad in the reporting period.
 - d. Products for exhibitions and fairs are, in principle, included in foreign trade data only if they were sold or given away free of charge. Returns from exhibitions are not included in foreign trade but there are difficulties in identifying these flows.
 - e. Equipment imported or exported on a lease basis (e.g., electronic computers and other data processing equipment).
 - f. Gold and silver (non-monetary), both in processed or partly processed form, scrap and remnants intended for industry, smelting or medical use.
 - g. Fuel and food supplied to foreign ships and aircraft in Israeli ports are included in export since 1969, even though they did not pass through Customs.

² United Nations, *International Trade Statistics Concepts and Definitions*, Statistical Papers, Series M, No. 52/ Rev. 2, 1998.

4. Special transactions and commodities not included in foreign trade statistics:

- a. Commodities imported or exported for a limited period of time and returned without having undergone any processing, e.g. personal effects of tourists (including cars); goods intended for exhibitions, fairs, displays, etc.; commodities intended for temporary storage only; equipment sent to perform contract work and returned after use.
- b. Effects purchased by tourists in Israel or by Israelis abroad. An estimate of the value of these purchases is included in the account of services in the Balance of Payments. In cases where duty has been charged on goods purchased by Israeli tourists, the goods were included in total imports.
- c. Engines and parts of aircraft sent by local airlines to their branches or representatives abroad for replacement or repairs and those sent to Israel from branches abroad for repairs or replacement.
- d. Fish caught by Israeli fishing vessels.
- e. Monetary gold, securities and legal tender (notes and coins) or currency about to be made legal tender (local currency notes printed abroad are recorded according to the value of the printers and not according to face value).
- f. Fuel and food supplied to Israeli ships and aircraft in foreign ports (recorded in Balance of Payments as services).
- g. Ballast and dunnage supplied to foreign ships in Israeli ports and to Israeli ships in foreign ports.
- h. Imported military equipment and weapons (estimated value is included in the commodities account in the Balance of Payments). The flow is not included in the import of goods because it does not undergo the usual procedure of passing through customs.

5. The trade with the Palestinian Authority

The trade data do not include the transactions with residents of the Palestinian Authority. The data also do not include the value of the import and export commodities, which were released by the Israeli customs and belong to residents of the Palestinian Authority. Data on trade with Palestinian Authority is published within the Balance of Payment.

Classification of Commodities

1. The classification, according to which foreign trade statistics are processed and published, is the classification that serves the customs³ in handling the import and export shipments. Import data are classified according to the details in the customs tariff⁴ and export data - according to the "Classification of Export Commodities"⁵.

As of January 1st 1988, the customs' classification of commodities, which serves the customs and statistical data processing, was based on a new international nomenclature, which was prepared by the Customs Cooperation Council – "The Harmonized Commodity and Coding System" (H.S.)⁶. This nomenclature replaces the Nomenclature "Classification of Goods in Customs Tariff" of which the first version was introduced at 1962 named "Brussels' Tariff Nomenclature" (B.T.N.) and the last version was the C.C.C.N. – "Customs Cooperation Council Nomenclature". In the special Supplement to Quarterly No. 4, 1988, details are presented on the new nomenclature, its aims, structure, and its principles of classification.

2. **S.I.T.C.**⁷

Import and export data are also classified according to the U.N⁸. Standard International Trade Classification, in which goods are classified in groups that are better suited for statistical presentation. This classification is obtained by a special sorting of details in the customs classification and their concentration in groups according to the structure of the classification. More details on the S.I.T.C. and its last version are presented in the Supplement to the Foreign Trade Quarterly No. 1, 1988.

3. **Classification by Economic Branches**

Export data is presented by branch of origin, meaning: the classification was done by the economic branch to which the product pertains by character. The division of the products into branches was done based on the description of the goods in the goods classification and not based on the exporter's branch. The definition of the branches is based on the classification of economic branches prepared by the Central Bureau of Statistics.

³ <http://www.mof.gov.il/customs/taarif.htm>

⁴ *Customs Tariff and Exemption Ordinance for 2002*, edited according to H.S. - 2002, Kovetz Hatakanot No. 1295, 1 January 2002.

⁵ The Ministry of Industry and Trade, The Customs Authority *Classification of Export Commodities Edited* according to H.S.- 1988, *Customs and Excise Dept.*, No. 511, 1 January 1988, updated for 1992.

⁶ http://europa.eu.int/comm/eurostat/ramon/nomenclatures/index.cfm?TargetUrl=LST_NOM

⁷ United Nations, *Standard International Trade Classification, Revision III*, Statistical Papers, Series M, No. 34, New York 1986.

⁸ <http://unstats.un.org/unsd/cr/registry/regcst.asp?Cl=14>

Starting with Quarterly No.1, 1995, data are published on export goods classified by new branch (origin)⁹. Until this Quarterly export goods were classified according to the "Standard Industrial Classification of All Economic Branches 1970" (Technical Publication No. 46).

Starting with Monthly No.8, 2003, data on export goods are published classified by new branch (origin)¹⁰.

Export data classified by new branch can be obtained from the Bureau's database starting 1988.

4. Classification by Economic destination.

This classification, according to which data on imports are presented, divides the items by three uses: consumer goods, raw materials for production and investment goods. Each use is sub-divided into secondary groups. In certain cases when a product is intended for more than one use, this product's import value is divided into the appropriate uses (e.g. passenger cars are both consumer goods and investment goods; sugar functions as consumer goods as well as a raw material).

In this classification the division of imports is into primary uses of the goods, i.e. the first use made of them: consumption, as raw materials - for production, or investment. Unprocessed and partly processed goods and components for assembling machinery and automobiles are classified as "raw materials". Spare parts, tools and accessories for additional use are also included under "raw materials". The classification by economic use is based on "Survey of Import Destination" which is conducted once in several years by the Central Bureau of Statistics.

The Classification of Import Commodities, by economic destination was updated in the No.3, 1993 Quarterly, as based on the Import Destinations Survey 1988. The results of that survey were published in Special Publication No. 952¹¹. Until the said quarterly, commodities were classified according to the 1982/83 survey, and henceforward they are classified according to the 1988 survey. The results of that survey were published in Special Publication No. 787¹².

5. Classification by Technological Intensity.

In 1997, the OECD presented a technology classification for the Manufacturing Industries, divided into four main groups: High Technology Industries, Medium-high Technology Industries, Medium-low Technology Industry, and Low Technology Industry.

The classification is based on industry rank evaluation of two technology intensity indicators: (1) R&D expenditures divided by value added; (2) R&D expenditures divided by production. High score Branches in the 1st indicator show higher use of both, advanced equipment and advanced technology. There is also high link between production and usage of advanced technology.

Israel adopted the OECD¹³ classification with two exceptions:

- Branch "Equipment for control & supervision" is included in "High-technology Industries". In the OECD it is included in "Medium-high-technology Industries".
- Branch "Petroleum & its products" is included in "Chemicals & refining petroleum" in "Medium-high-technology Industries". In the OECD it is included in "Medium-low-technology Industries".

List of Manufacturing Industries included in each of the four main groups of the Classification by Technological Intensity:

- **High technology Industries** include electronic industries, equipment for control & supervision, office & computing equipment, aircrafts and pharmaceutical products.
- **Medium-high technology industries** include refining petroleum industries, chemicals (excluding pharmaceutical products), machinery, electronic equipment & electrical motors, motor vehicles and transport equipment (excluding aircraft industry).
- **Medium-low technology industries** include mining & quarrying industries, rubber & plastic products, iron & steel foundries, metal product, non-metallic mineral product and jewellery, goldsmith & silversmith.
- **Low technology industries** include food products, beverages & tobacco, textile, wearing apparel & leather, paper, printing & paper products, and wood & furniture.

⁹. Central Bureau of Statistics, *The Standard Classification of All Economic Activities 1993*, Technical Publication No.63, Jerusalem 1993.

¹⁰. Central Bureau of Statistics, *The Standard Classification of All Economic Activities 1993*, Technical Publication No. 63, Second Edition, Jerusalem 2003.

¹¹ Central Bureau of Statistics, Import Destination Survey 1988, Special Series No. 952.

¹² Central Bureau of Statistics, Import Destination Survey 1982/83, Special Series No. 787.

¹³ *Classification of Manufacturing Industries Based on Technology*, OECD Science, Technology and Industry Scoreboard, Towards a Knowledge-base Economy, Science and Innovation, OECD 2001, Annex I, pp.137-140.

6. Fuels

Data on import of fuels include crude oil and petroleum products such as residual fuel oil, gasoline and coal and its by-products.

The Value of Commodities

1. **The value of imports** is determined by the importers' report to Customs being based on the value of the transaction as defined in the Treaty of Brussels on the Evaluation of Goods for Customs Purposes (1950). The value of the transaction represents the value for which the goods were sold supplemented by expenditure on transportation and insurance as far as the border of the importing country, including costs of unloading at the exporting port. This definition of the value of the transaction in imports corresponds to the value of the goods according to C.I.F. (Cost, Insurance, Freight).

In most of the cases, the value for Customs purposes includes an imputation of local costs - wharfage and portorage fees.

Import taxes and other taxes levied on imported goods are not included in the value for Customs purposes.

In the event of import of products unaccompanied by monetary recompense, where difficulty exists in determining the value of the transaction (as in the case of gifts), the value is determined by an estimate based on market price. So, for example, the cost of import of gifts for museums is based on the valuation of an insurance assessor.

If imported commodities are freed against a deposit, the import is recorded according to the date of release against the deposit until the final settlement of the account. The amendment of this import is recorded with final settlement, which is also dated according to the actual release of the goods (in other words an amendment of the value of the import july take place after several months).

2. **Import** data are recorded in the import entry forms in the currency of the transaction and are calculated in Israeli Shekels, according to the exchange rate on the date they are freed by customs and are converted into U.S. dollars too. The exchange rates for these purposes are the exchange rates for customs purposes on the date of the presentation of the entry forms. In the publications on Foreign Trade, the values of imports and exports are presented in U.S. dollars.

Since the floating of the Israeli Pound in October 1977, the rates of exchange between major foreign currencies and the Pound or the Shekel are determined for customs according to the rate dictated by the customs authorities on the basis of data provided by the Bank of Israel. To the extent that exchange rates fluctuate more than 2 percent in the daily rate of any currency, as fixed by the Bank of Israel, so the rates for customs purposes may be changed even in the middle of the week

December 1980 and October 1985 changes were introduced concerning Israeli currency: December 1980 the prevailing currency, the Lira, was changed to shekel. The exchange rate was 10 Lira was equivalent to 1 Shekel. October 1985 the Shekel was changed into New Shekel. The exchange rate was 1,000 Shekels were equivalent to 1 New Shekel.

3. **The Value of exports** data are recorded according to F.O.B. (free on board) transaction values before discounts and commissions are paid to foreign factors.
4. **Export** data are recorded in the export entry forms in Israeli Shekels and in the currency in which the transaction is made. The conversion into U.S. dollars is carried out in the monthly summaries, according to the rate on the day the transaction was registered at customs.

Data Sources

1. The main sources for imports and exports data are the forms submitted to the customs authorities by importers and exporters (import and export entry forms).
2. In certain cases the sources are administrative summaries prepared by institutions, which supervise the foreign trade of groups of products, such as aircraft and ships.

An important portion of the fresh agriculture exports is carried out by the consignment method.

Diamond imports are recorded until 31 December 1982 according to administrative summaries and since 1 January 1983 - according to the system of all imports. The change in the recording system was applied on 1 October 1982.

Imports and exports of ships and aircraft are recorded according to data obtained from the Ministry of Transport and airlines and shipping companies.

Seasonally Adjusted Data

Several data series are presented Seasonally Adjusted.¹⁴

Beginning January 2005 the data analysis is done by means of the improved computer program X12-ARIMA/2000, replacing X12-ARIMA/2000 used before. This analysis is based on moving averages which calculates the seasonal factors-S for each month. These factors may change by use of supplemented or updated data.

Seasonally adjusted data include prior adjustment factors for trading days and festivals dates (P) that were calculated simultaneously by a new method, which was developed by the Central Bureau of Statistics.

Seasonal adjustments cannot be deducted from all the series and therefore some of the intermediate sums also include series for which no seasonal adjustments were found. New classification of trade data by branch of origin enables expansion of seasonally adjusted data series. Starting 'Foreign Trade Quarterly' No. 1, 1995, 8 new export series and 5 additional import series are published. Monthly data for 1988 and onward can be obtained from the Bureau's database for each basic series and for series totals.

¹⁴ Central Bureau of Statistics, 'Seasonal and Prior Adjustment Factors for 2008, Trends for 2004-2008' (Internet only, at the Central Bureau of Statistics site: Classification and Methods, Statistical Methods, Time Series).
<http://www.cbs.gov.il/publications/tseries/seasonal08/presentationh08.pdf>

Table A 1. - Foreign Trade Balance, Net⁽¹⁾

לוח א 1. - מאזן סחר חוץ, נטו⁽¹⁾

Million \$									מיליוני דולרים		
היצוא, כ- % מהיבוא, ללא אניות, מטוסים והלומים	גירעון מסחרי Trade deficit			יצוא Exports		יבוא Imports			סך הכל ⁽²⁾		
	ללא אניות, מטוסים והלומים וחומרי אנרגיה	ללא אניות, מטוסים, יהלומים	ללא אניות, מטוסים, יהלומים	מזה: ללא אניות, מטוסים, יהלומים	סך הכל ⁽²⁾	מזה: ללא אניות, מטוסים, יהלומים וחומרי אנרגיה	ללא אניות, מטוסים, יהלומים	סך הכל ⁽²⁾			
Exports, as % of imports excl. ships, aircraft and diamonds	Excl. ships, aircraft, diamonds and fuels	Excl. ships, aircraft, diamonds	Total ⁽²⁾	Thereof: excl. ships, aircraft, diamonds	Total ⁽²⁾	Excl. ships, aircraft, diamonds and fuels	Excl. ships, aircraft, diamonds	Total ⁽²⁾			
Original data										נתונים מקוריים	
78.4	838.4	8,294.0	7,617.3	30,191.8	39,700.5	31,030.2	38,485.8	47,317.8		2006	
77.1	1,561.3	10,496.7	10,188.7	35,426.4	45,916.5	36,987.7	45,923.1	56,105.2		2007	
-1.7	86.2	26.6	33.8	17.3	15.7	19.2	19.3	18.6	change %	שינוי %	
78.4	907.0	5,502.3	4,769.9	19,917.3	26,193.7	20,824.3	25,419.6	30,963.6	I - VII	2007	
73.5	834.5	8,932.2	7,827.4	24,755.4	31,969.3	25,589.9	33,687.6	39,796.7	I - VII	2008	
	521.3	1,219.7	1,402.9	2,991.8	3,912.8	3,513.1	4,211.5	5,315.7	VII	2007	
	393.4	1,371.8	1,610.0	2,773.4	3,483.2	3,166.8	4,145.2	5,093.2	VIII		
	85.0	830.2	654.5	2,619.4	3,515.8	2,704.4	3,449.6	4,170.3	IX		
	569.7	1,174.1	1,159.8	3,042.1	3,995.2	3,611.8	4,216.2	5,155.0	X		
	-261.0	679.7	451.5	3,460.8	4,528.9	3,199.8	4,140.5	4,980.4	XI		
	-132.8	938.6	1,543.0	3,613.4	4,199.7	3,480.6	4,552.0	5,742.7	XII		
	377.5	1,386.8	855.3	3,129.2	4,308.8	3,506.7	4,516.0	5,164.1	I	2008	
	270.5	1,137.4	850.8	3,099.3	4,246.1	3,369.8	4,236.7	5,096.9	II		
	-141.7	1,167.0	1,154.4	3,963.8	4,874.3	3,822.1	5,130.8	6,028.7	III		
	341.7	1,294.7	1,473.8	3,345.8	3,989.5	3,687.5	4,640.5	5,463.3	IV		
	-34.6	1,371.5	882.5	3,504.2	4,898.6	3,469.6	4,875.7	5,781.1	V		
	-448.0	738.9	1,079.3	4,114.8	4,831.5	3,666.8	4,853.7	5,910.8	VI		
	469.1	1,835.9	1,531.3	3,598.3	4,820.5	4,067.4	5,434.2	6,351.8	VII		
Seasonally adjusted data										נתונים ממוזגים עונתיים	
	ממוזג עונתיים S.A.	ממוזג עונתיים S.A.	ממוזג עונתיים S.A.	ממוזג עונתיים S.A.	ממוזג עונתיים S.A.	ממוזג עונתיים S.A.	ממוזג עונתיים S.A.	ממוזג עונתיים S.A.			
	194.0	892.4	3,124.8	3,124.8	3,318.8	4,017.2	4,017.2	4,017.2	VII	2007	
	195.3	1,173.7	2,951.0	2,951.0	3,146.3	4,124.7	4,124.7	4,124.7	VIII		
	280.6	1,025.8	2,799.3	2,799.3	3,079.9	3,825.1	3,825.1	3,825.1	IX		
	224.8	829.2	3,227.4	3,227.4	3,452.2	4,056.6	4,056.6	4,056.6	X		
	45.9	986.6	3,328.7	3,328.7	3,374.6	4,315.3	4,315.3	4,315.3	XI		
	27.8	1,099.2	3,370.3	3,370.3	3,398.1	4,469.5	4,469.5	4,469.5	XII		
	136.0	1,145.3	3,300.6	3,300.6	3,436.6	4,445.9	4,445.9	4,445.9	I	2008	
	255.6	1,122.5	3,296.7	3,296.7	3,552.3	4,419.2	4,419.2	4,419.2	II		
	177.6	1,486.3	3,535.7	3,535.7	3,713.3	5,022.0	5,022.0	5,022.0	III		
	281.1	1,234.1	3,499.8	3,499.8	3,780.9	4,733.9	4,733.9	4,733.9	IV		
	-6.1	1,400.0	3,441.0	3,441.0	3,434.9	4,841.0	4,841.0	4,841.0	V		
	-12.5	1,174.4	3,775.8	3,775.8	3,763.3	4,950.2	4,950.2	4,950.2	VI		
	266.2	1,633.0	3,708.4	3,708.4	3,974.6	5,341.4	5,341.4	5,341.4	VII		
Trend data										נתוני מגמה	
	201.5	899.9	2,941.7	2,941.7	3,143.2	3,841.6	3,841.6	3,841.6	VII	2007	
	192.1	1,170.5	3,007.6	3,007.6	3,199.7	4,178.1	4,178.1	4,178.1	VIII		
	180.4	925.6	3,077.2	3,077.2	3,257.6	4,002.8	4,002.8	4,002.8	IX		
	170.1	774.5	3,147.3	3,147.3	3,317.4	3,921.8	3,921.8	3,921.8	X		
	163.3	1,104.0	3,215.7	3,215.7	3,379.0	4,319.7	4,319.7	4,319.7	XI		
	159.4	1,230.8	3,281.7	3,281.7	3,441.1	4,512.5	4,512.5	4,512.5	XII		
	157.5	1,166.8	3,344.6	3,344.6	3,502.1	4,511.4	4,511.4	4,511.4	I	2008	
	154.4	1,021.3	3,405.7	3,405.7	3,560.1	4,427.0	4,427.0	4,427.0	II		
	149.2	1,457.9	3,465.6	3,465.6	3,614.8	4,923.5	4,923.5	4,923.5	III		
	141.8	1,094.8	3,523.6	3,523.6	3,665.4	4,618.4	4,618.4	4,618.4	IV		
	133.8	1,539.9	3,577.5	3,577.5	3,711.3	5,117.4	5,117.4	5,117.4	V		
	126.8	1,313.7	3,624.5	3,624.5	3,751.3	4,938.2	4,938.2	4,938.2	VI		
	121.3	1,488.1	3,664.4	3,664.4	3,785.7	5,152.5	5,152.5	5,152.5	VII		
Trend data- Percent change⁽³⁾										נתוני מגמה - אחוז השינוי⁽³⁾	
				2.2	1.8	1.8	1.8	1.8	VIII	2007	
				2.3	1.8	1.8	1.8	1.8	IX		
				2.3	1.8	1.8	1.8	1.8	X		
				2.2	1.9	1.9	1.9	1.9	XI		
				2.1	1.8	1.8	1.8	1.8	XII		
				1.9	1.8	1.8	1.8	1.8	I	2008	
				1.8	1.7	1.7	1.7	1.7	II		
				1.8	1.5	1.5	1.5	1.5	III		
				1.7	1.4	1.4	1.4	1.4	IV		
				1.5	1.3	1.3	1.3	1.3	V		
				1.3	1.1	1.1	1.1	1.1	VI		
				1.1	0.9	0.9	0.9	0.9	VII		

(1) Net equals gross total less goods returned to the suppliers.

(2) No seasonal effect was found in these series.

(3) Percent change on previous period.

(1) הנתון שווה לברוטו בניכוי החזרות טובין לספקים.

(2) בסדרות אלה לא נמצאה השפעה עונתית.

(3) השינוי באחוזים, כל תקופה לעומת קודמתה.

Table A.2. - Foreign Trade Balance - Imports, by Commodity Group (Net)

לוח א 2. - מאזן סחר חוץ - יבוא, לפי קבוצת סחורות (נטו)

Million \$											מיליוני דולרים	
החזרות (-)	אחר ⁽¹⁾	אניות ומטוסים ⁽¹⁾	יהלומים גולמיים ומלוטשים נטו	חומרי אנרגיה ⁽¹⁾	נכסי השקעה ⁽³⁾	חומרי גלם ⁽²⁾	מוצרי צריכה	סך הכל ללא אניות, מטוסים, יהלומים וחומרי אנרגיה	סך הכל ללא אניות, מטוסים ויהלומים	סך הכל ⁽¹⁾		
Returned (-)	Other ⁽¹⁾	Ships and aircraft ⁽¹⁾	Diamonds rough and polished net	Fuels ⁽¹⁾	Investment goods ⁽³⁾	Raw materials ⁽²⁾	Consumer goods	Total excl. ships aircraft, diamonds and fuels	Total excl. ships aircraft and diamonds	Total ⁽¹⁾		
Original data											נתונים מקוריים	
127.7	38.8	172.9	8,659.1	7,455.6	6,573.4	18,517.5	5,900.5	31,030.2	38,485.8	47,317.8		2006
124.3	49.4	539.6	9,642.5	8,935.4	8,032.6	21,394.9	7,510.8	36,987.7	45,923.1	56,105.2		2007
-2.7	27.3	212.1	11.4	19.8	22.2	15.5	27.3	19.2	19.3	18.6	שינוי %	change
81.3	27.6	290.8	5,253.2	4,595.3	4,428.5	12,094.7	4,273.5	20,824.3	25,419.6	30,963.6	I - VII	2007
74.8	38.5	70.3	6,038.8	8,097.7	5,810.6	14,400.9	5,339.9	25,589.9	33,687.6	39,796.7	I - VII	2008
12.0	4.1	228.2	876.0	698.4	793.4	2,010.5	705.1	3,513.1	4,211.5	5,315.7	VII	2007
10.0	4.3	240.2	707.8	978.4	655.3	1,798.2	709.0	3,166.8	4,145.2	5,093.2	VIII	
7.8	4.5	1.0	719.7	745.2	599.2	1,538.5	562.2	2,704.4	3,449.6	4,170.3	IX	
8.2	3.8	0.6	938.2	604.4	738.2	2,135.8	734.0	3,611.8	4,216.2	5,155.0	X	
8.0	5.0	4.5	835.4	940.7	773.8	1,817.8	603.2	3,199.8	4,140.5	4,980.4	XI	
9.0	4.2	2.5	1,188.2	1,071.4	837.6	2,009.9	628.9	3,480.6	4,552.0	5,742.7	XII	
11.5	4.9	31.0	617.1	1,009.3	832.5	1,904.4	764.9	3,506.7	4,516.0	5,164.1	I	2008
15.4	4.3	0.7	859.5	866.9	769.9	1,824.4	771.2	3,369.8	4,236.7	5,096.9	II	
15.0	6.6	0.6	897.3	1,308.7	826.9	2,121.5	867.1	3,822.1	5,130.8	6,028.7	III	
7.9	5.5	33.9	788.9	953.0	847.1	2,089.7	745.2	3,687.5	4,640.5	5,463.3	IV	
8.0	7.0	1.2	904.2	1,406.1	772.3	2,034.3	656.0	3,469.6	4,875.7	5,781.1	V	
9.0	4.9	1.9	1,055.2	1,186.9	862.5	2,090.2	709.2	3,666.8	4,853.7	5,910.8	VI	
8.0	5.3	1.0	916.6	1,366.8	899.4	2,336.4	826.3	4,067.4	5,434.2	6,351.8	VII	
Seasonally adjusted data											נתונים מוכחי עונתיות	
					מנוכה עונתיות S.A.	מנוכה עונתיות S.A.	מנוכה עונתיות S.A.	מנוכה עונתיות S.A.	מנוכה עונתיות S.A.			
			842.0		736.3	1,893.7	684.7	3,318.8	4,017.2		VII	2007
			837.3		666.1	1,828.7	647.2	3,146.3	4,124.7		VIII	
			727.6		719.8	1,739.9	615.6	3,079.9	3,825.1		IX	
			874.7		734.8	2,009.7	704.0	3,452.2	4,056.6		X	
			799.0		793.0	1,893.5	683.2	3,374.6	4,315.3		XI	
			902.8		758.2	1,976.0	659.8	3,398.1	4,469.5		XII	
			773.6		816.5	1,883.2	731.9	3,436.6	4,445.9		I	2008
			874.0		815.3	1,935.0	797.7	3,552.3	4,419.2		II	
			896.7		858.3	2,004.7	843.7	3,713.3	5,022.0		III	
			891.8		903.8	2,065.8	805.8	3,780.9	4,733.9		IV	
			881.9		764.0	2,002.6	661.2	3,434.9	4,841.0		V	
			976.3		851.6	2,130.3	776.6	3,763.3	4,950.2		VI	
			959.8		873.1	2,264.1	832.0	3,974.6	5,341.4		VII	
Trend data											נתוני מגמה	
			795.6		688.5	1,796.0	647.5	3,143.2	3,841.6		VII	2007
			804.9		706.9	1,820.3	662.8	3,199.7	4,178.1		VIII	
			815.7		726.7	1,844.4	680.0	3,257.6	4,002.8		IX	
			826.8		748.0	1,867.9	699.5	3,317.4	3,921.8		X	
			837.4		770.2	1,891.2	720.3	3,379.0	4,319.7		XI	
			847.5		792.0	1,914.8	740.6	3,441.1	4,512.5		XII	
			857.3		811.5	1,940.9	757.7	3,502.1	4,511.4		I	2008
			868.2		827.2	1,970.8	769.8	3,560.1	4,427.0		II	
			881.8		838.6	2,005.5	776.1	3,614.8	4,923.5		III	
			897.9		846.4	2,043.7	777.3	3,665.4	4,618.4		IV	
			915.5		851.6	2,082.9	775.6	3,711.3	5,117.4		V	
			933.3		855.3	2,119.1	773.2	3,751.3	4,938.2		VI	
			949.4		858.7	2,149.7	772.6	3,785.7	5,152.5		VII	
Trend data- Percent change⁽⁴⁾											נתוני מגמה - אחוז השינוי⁽⁴⁾	
					2.7	1.4	2.4	1.8	1.8		VIII	2007
					2.8	1.3	2.6	1.8	1.8		IX	
					2.9	1.3	2.9	1.8	1.8		X	
					3.0	1.2	3.0	1.9	1.9		XI	
					2.8	1.2	2.8	1.8	1.8		XII	
					2.5	1.4	2.3	1.8	1.8		I	2008
					1.9	1.5	1.6	1.7	1.7		II	
					1.4	1.8	0.8	1.5	1.5		III	
					0.9	1.9	0.2	1.4	1.4		IV	
					0.6	1.9	-0.2	1.3	1.3		V	
					0.4	1.7	-0.3	1.1	1.1		VI	
					0.4	1.4	-0.1	0.9	0.9		VII	

(1) No seasonal effect was found in these series.

(2) Excluding diamonds and fuels.

(3) Excluding ships and aircraft.

(4) Percent change on previous period.

(1) בסדרות אלה לא נמצאה השפעה עונתית.

(2) ללא יהלומים וחומרי אנרגיה.

(3) ללא אניות ומטוסים.

(4) השינוי באחוזים, כל תקופה לעומת קודמתה.

Table A 3. - Foreign Trade Balance -
Exports, by Commodity Group (Net)

לוח א 3. - מאזן סחר חוץ -
יצוא, לפי קבוצת סחורות (נטו)

Million \$		מיליוני דולרים							
החזרות (-) יצוא (-)	אניות ומטוסים משומשים ⁽¹⁾	יהלומים Diamonds		אחר ⁽¹⁾⁽³⁾	תעשיית ⁽²⁾	חקלאי	סך הכל ללא אניות, מטוסים ויהלומים Total excl. ships, aircraft and diamonds	סך הכל ⁽¹⁾	
		גולמיים Rough	מלוטשים Polished						
Returned exports (-)	Used ships and aircraft ⁽¹⁾			Other ⁽¹⁾⁽³⁾	Manufac- turing ⁽²⁾	Agricultural		Total ⁽¹⁾	
Original data									
246.4	222.2	2,676.8	6,609.7	71.5	29,089.1	1,031.2	30,191.8	39,700.5	נתונים מקוריים
247.0	0.0	3,373.2	7,116.9	71.8	34,028.6	1,326.0	35,426.4	45,916.5	2006
0.2		26.0	7.7	0.4	17.0	28.6	17.3	15.7	שינוי %
151.0	0.0	2,006.4	4,270.0	41.7	19,010.9	864.7	19,917.3	26,193.7	I - VII
147.0	0.0	2,550.1	4,663.8	36.9	23,895.4	823.1	24,755.4	31,969.3	I - VII
20.0	0.0	265.9	655.1	5.0	2,931.8	55.0	2,991.8	3,912.8	VII
18.0	0.0	251.1	458.7	5.1	2,715.5	52.8	2,773.4	3,483.2	VIII
20.0	0.0	249.6	646.8	4.4	2,551.9	63.1	2,619.4	3,515.8	IX
20.0	0.0	346.0	607.1	9.3	2,945.0	87.8	3,042.1	3,995.2	X
18.0	0.0	259.3	808.8	6.6	3,336.8	117.4	3,460.8	4,528.9	XI
20.0	0.0	260.8	325.5	4.7	3,468.5	140.2	3,613.4	4,199.7	XII
21.0	0.0	442.9	736.7	9.9	2,959.3	160.0	3,129.2	4,308.8	I
20.0	0.0	341.5	805.3	4.4	2,935.9	159.0	3,099.3	4,246.1	II
25.0	0.0	310.2	600.3	3.6	3,794.1	166.1	3,963.8	4,874.3	III
20.0	0.0	267.4	376.3	4.7	3,252.4	88.7	3,345.8	3,989.5	IV
20.0	0.0	373.4	1,021.0	6.5	3,404.2	93.5	3,504.2	4,898.6	V
21.0	0.0	443.3	273.4	5.7	4,022.4	86.7	4,114.8	4,831.5	VI
20.0	0.0	371.4	850.8	2.1	3,527.1	69.1	3,598.3	4,820.5	VII
Seasonally adjusted data									
נתונים מנוכחי עונתיות									
		מנוכה עונתיות S.A.	מנוכה עונתיות S.A.	מנוכה עונתיות S.A.	מנוכה עונתיות S.A.	מנוכה עונתיות S.A.	מנוכה עונתיות S.A.		
		272.2	614.9	3,022.0	97.9	3,124.8			VII
		268.0	593.9	2,849.4	96.5	2,951.0			VIII
		257.8	683.8	2,692.9	102.0	2,799.3			IX
		388.6	632.1	3,105.4	112.8	3,227.4			X
		264.4	631.3	3,200.1	122.0	3,328.7			XI
		347.3	584.8	3,249.2	116.4	3,370.3			XII
		355.6	626.3	3,175.2	115.5	3,300.6			I
		319.2	655.7	3,188.8	103.5	3,296.7			II
		300.0	649.7	3,417.5	114.6	3,535.7			III
		324.4	589.7	3,415.8	79.3	3,499.8			IV
		315.8	674.0	3,336.3	98.3	3,441.0			V
		387.8	456.8	3,658.8	111.3	3,775.8			VI
		384.3	764.6	3,593.8	112.5	3,708.4			VII
Trend data									
נתוני מגמה									
		274.5	598.0	2,833.8	104.0	2,941.7			VII
		276.4	608.5	2,897.9	103.6	3,007.6			VIII
		280.5	617.3	2,965.2	104.6	3,077.2			IX
		286.7	623.0	3,033.2	106.4	3,147.3			X
		294.1	626.0	3,100.1	108.2	3,215.7			XI
		302.0	628.6	3,165.1	109.3	3,281.7			XII
		310.3	634.1	3,228.3	109.4	3,344.6			I
		319.5	645.2	3,290.7	108.6	3,405.7			II
		331.0	661.9	3,352.4	107.6	3,465.6			III
		346.2	682.2	3,412.2	107.1	3,523.6			IV
		365.1	702.9	3,467.2	107.5	3,577.5			V
		386.2	720.6	3,514.2	109.0	3,624.5			VI
		407.3	733.4	3,553.1	111.1	3,664.4			VII
Trend data- Percent change ⁽⁴⁾									
נתוני מגמה - אחוז השינוי ⁽⁴⁾									
		0.7	1.8	2.3	-0.4	2.2			VIII
		1.5	1.4	2.3	1.0	2.3			IX
		2.2	0.9	2.3	1.7	2.3			X
		2.6	0.5	2.2	1.7	2.2			XI
		2.7	0.4	2.1	1.0	2.1			XII
		2.7	0.9	2.0	0.1	1.9			I
		3.0	1.8	1.9	-0.7	1.8			II
		3.6	2.6	1.9	-0.9	1.8			III
		4.6	3.1	1.8	-0.5	1.7			IV
		5.5	3.0	1.6	0.4	1.5			V
		5.8	2.5	1.4	1.4	1.3			VI
		5.5	1.8	1.1	1.9	1.1			VII

(1) No seasonal effect was found in these series.

(2) Excluding polished diamonds.

(3) Excluding rough diamonds, used ships and aircraft.

(4) Percent change on previous period.

(1) בסדרות אלה לא נמצאה השפעה עונתית.

(2) ללא יהלומים מלוטשים.

(3) ללא יהלומים גולמיים, אניות ומטוסים משומשים.

(4) השינוי באחוזים, כל תקופה לעומת קודמתה.

Table B 1. - Imports of Consumer Goods, by Commodity Group

לוח ב 1. - יבוא מוצרי צריכה, לפי קבוצת סחורות

Million \$										מיליוני דולרים	
מוצרים בני קיימא Durable goods				מוצרים לצריכה שוטפת Non-durable goods						סך כולל	Grand total
אחר ⁽¹⁾	כלי תחבורה	רהיט ומוצרי חשמל ביתיים Furniture and electrical equipment	סך הכל	אחר	כלי בית Household utensils	הלבשה והנעלה Clothing and footwear	מזון ומשקאות Food and beverages	תרופות Medicines	סך הכל		
Other ⁽¹⁾	Transport equipment		Total	Other					Total		
Original data										נתונים מקוריים	
186.1	1,045.0	1,282.1	2,513.2	482.1	385.8	991.3	1,175.3	352.8	3,387.3	5,900.5	2006
233.6	1,569.6	1,697.9	3,501.1	549.0	455.1	1,188.0	1,444.3	373.3	4,009.7	7,510.8	2007
25.5	50.2	32.4	39.3	13.9	18.0	19.8	0.0	5.8	18.4	27.3	שינוי %
131.9	958.5	940.1	2,030.5	326.4	257.8	623.1	824.1	211.6	2,243.0	4,273.5	I - VII 2007
155.4	1,295.2	1,113.7	2,564.3	390.9	312.5	775.5	1,028.0	268.7	2,775.6	5,339.9	I - VII 2008
24.5	169.6	156.5	350.6	56.0	44.3	98.2	123.2	32.8	354.5	705.1	VII 2007
17.6	118.5	159.0	295.1	54.3	47.5	150.7	127.8	33.6	413.9	709.0	VIII 2007
19.7	92.4	121.6	233.7	35.6	31.0	124.1	109.5	28.3	328.5	562.2	IX 2007
22.4	157.6	152.3	332.3	44.8	44.0	135.0	143.8	34.1	401.7	734.0	X 2007
21.1	129.5	150.9	301.5	41.6	35.4	80.9	110.3	33.5	301.7	603.2	XI 2007
20.9	113.1	174.0	308.0	46.3	39.4	74.2	128.8	32.2	320.9	628.9	XII 2007
16.9	218.6	167.2	402.7	48.7	40.8	94.8	147.8	30.1	362.2	764.9	I 2008
21.0	164.0	157.8	342.8	51.4	49.6	139.0	153.4	35.0	428.4	771.2	II 2008
26.5	196.5	180.0	403.0	56.0	53.8	142.7	170.1	41.5	464.1	867.1	III 2008
20.0	165.1	163.6	348.7	54.2	43.8	110.7	146.9	40.9	396.5	745.2	IV 2008
20.1	161.1	131.8	313.0	54.2	36.1	89.8	127.5	35.4	343.0	656.0	V 2008
25.4	190.5	146.6	362.5	57.9	41.2	79.4	122.7	45.5	346.7	709.2	VI 2008
25.5	199.4	166.7	391.6	68.5	47.2	119.1	159.6	40.3	434.7	826.3	VII 2008
Seasonally adjusted data										נתונים מונכי עונתיות	
מנכה עונתיות S.A.		מנכה עונתיות S.A.		מנכה עונתיות S.A.		מנכה עונתיות S.A.		מנכה עונתיות S.A.		מנכה עונתיות S.A.	
147.1	147.0	315.8	47.7	40.7	122.0	128.1	30.5	368.9	684.7	647.5	VII 2007
113.0	149.6	282.6	51.7	38.8	114.3	127.1	32.8	364.6	647.2	647.2	VIII 2007
122.5	147.7	291.0	43.3	34.9	91.4	124.4	30.6	324.6	615.6	615.6	IX 2007
152.0	158.1	330.6	48.5	45.1	108.3	138.0	33.5	373.4	704.0	704.0	X 2007
147.6	161.2	329.8	48.2	40.9	100.9	129.2	34.2	353.3	683.2	683.2	XI 2007
90.8	167.3	278.4	48.3	43.3	117.5	140.2	32.1	381.4	659.8	659.8	XII 2007
189.5	162.9	373.2	49.0	41.2	110.5	129.2	28.7	358.7	731.9	731.9	I 2008
208.9	161.5	391.8	51.5	43.5	120.7	154.7	35.5	405.9	797.7	797.7	II 2008
271.4	161.3	454.5	51.8	45.4	112.6	141.8	37.7	389.2	843.7	843.7	III 2008
241.3	151.4	413.4	55.3	43.8	110.8	140.6	41.9	392.4	805.8	805.8	IV 2008
114.1	144.4	280.5	53.1	42.1	117.3	132.9	35.3	380.7	661.2	661.2	V 2008
170.4	161.6	356.2	57.9	46.0	128.6	141.4	46.4	420.4	776.6	776.6	VI 2008
169.0	165.2	358.5	59.3	45.2	156.4	174.1	38.6	473.5	832.0	832.0	VII 2008
Trend data										נתוני מגמה	
130.4	147.7	298.0	46.8	40.3	102.2	126.6	31.0	349.9	647.5	647.5	VII 2007
135.6	151.0	307.0	47.2	40.9	104.3	128.4	31.5	355.3	662.8	662.8	VIII 2007
142.7	154.3	318.5	47.5	41.3	106.3	130.0	32.0	359.7	680.0	680.0	IX 2007
152.5	157.3	332.6	47.8	41.8	107.9	131.5	32.6	363.7	699.5	699.5	X 2007
165.0	159.8	348.3	48.2	42.2	109.3	133.0	33.3	367.7	720.3	720.3	XI 2007
178.5	161.3	363.7	48.8	42.6	110.6	134.7	34.2	372.1	740.6	740.6	XII 2007
190.7	161.9	376.2	49.7	43.0	112.0	136.3	35.2	376.9	757.7	757.7	I 2008
199.0	161.6	383.4	50.9	43.4	113.5	137.7	36.1	382.2	769.8	769.8	II 2008
201.6	161.0	384.5	52.3	43.7	115.6	138.9	37.0	387.7	776.1	776.1	III 2008
198.5	160.6	380.1	53.8	44.0	118.0	139.9	37.8	393.5	777.3	777.3	IV 2008
191.3	160.7	372.7	55.1	44.4	120.7	140.6	38.3	399.3	775.6	775.6	V 2008
182.8	161.5	364.9	56.2	44.7	123.5	141.2	38.6	404.8	773.2	773.2	VI 2008
175.8	162.8	359.3	56.9	45.1	125.9	141.8	38.8	409.8	772.6	772.6	VII 2008
Trend data- Percent change⁽²⁾										נתוני מגמה - אחוז השינוי⁽²⁾	
4.0	2.2	3.0	0.9	1.5	2.1	1.4	1.6	1.5	2.4	2.4	VIII 2007
5.2	2.2	3.7	0.6	1.0	1.9	1.2	1.6	1.2	2.6	2.6	IX 2007
6.9	1.9	4.4	0.6	1.2	1.5	1.2	1.9	1.1	2.9	2.9	X 2007
8.2	1.6	4.7	0.8	1.0	1.3	1.1	2.1	1.1	3.0	3.0	XI 2007
8.2	0.9	4.4	1.2	0.9	1.2	1.3	2.7	1.2	2.8	2.8	XII 2007
6.8	0.4	3.4	1.8	0.9	1.3	1.2	2.9	1.3	2.3	2.3	I 2008
4.4	-0.2	1.9	2.4	0.9	1.3	1.0	2.6	1.4	1.6	1.6	II 2008
1.3	-0.4	0.3	2.8	0.7	1.9	0.9	2.5	1.4	0.8	0.8	III 2008
-1.5	-0.2	-1.1	2.9	0.7	2.1	0.7	2.2	1.5	0.2	0.2	IV 2008
-3.6	0.1	-1.9	2.4	0.9	2.3	0.5	1.3	1.5	-0.2	-0.2	V 2008
-4.4	0.5	-2.1	2.0	0.7	2.3	0.4	0.8	1.4	-0.3	-0.3	VI 2008
-3.8	0.8	-1.5	1.2	0.9	1.9	0.4	0.5	1.2	-0.1	-0.1	VII 2008

(1) No seasonal effect was found in these series.

(2) Percent change on previous period.

(1) בסדרות אלה לא נמצאה השפעה עונתית.
(2) השינוי באחוזים, כל תקופה לעומת קודמתה.

לוח ב 2 - יבוא חומרי גלם, לפי קבוצת סחורות

מיליוני דולרים

עץ ומוצרו	בדים וחוטים	מוצרי מזון גולמיים ⁽¹⁾	לתעשיות מכוונות ואלקטרוניקה For machine and electronics manufacturing	לתעשיות נייר For paper manufacturing	לחקלאות ⁽¹⁾ For agriculture ⁽¹⁾	סך הכל Total	סך כולל ⁽¹⁾		
							חומרי גלם ללא יהלומים וחומרי אנרגיה	Grand total ⁽¹⁾	
נתונים מקוריים									
355.7	632.4	1,107.1	6,594.6	700.9	449.0	18,645.2	35,155.0	2006	
492.8	683.0	1,309.9	7,258.1	800.2	616.6	21,519.2	40,490.6	2007	
38.5	8.0	18.3	10.1	14.2	37.3	15.4	15.2	שינוי %	
279.7	383.0	743.7	4,155.0	462.4	297.0	12,176.0	22,278.3	I - VII 2007	
298.9	431.5	973.8	4,674.8	515.5	443.9	14,475.7	28,850.6	I - VII 2008	
56.8	59.3	155.3	684.4	77.7	35.6	2,022.5	3,624.1	VII 2007	
47.7	63.8	102.1	571.0	75.5	75.5	1,808.2	3,508.9	VIII	
40.0	51.8	90.8	519.5	60.2	49.6	1,546.3	3,045.3	IX	
45.5	64.4	145.2	699.0	80.2	61.3	2,144.0	3,711.3	X	
40.8	58.8	105.3	612.8	64.1	53.0	1,825.8	3,643.2	XI	
39.1	61.2	122.8	700.8	57.8	80.2	2,018.9	4,303.6	XII	
44.1	62.7	131.8	638.6	68.0	49.0	1,915.9	3,603.8	I 2008	
34.3	57.6	130.8	600.9	73.2	65.1	1,839.8	3,597.2	II	
36.7	65.7	142.4	673.3	84.7	55.1	2,136.5	4,377.5	III	
45.6	61.8	132.8	660.9	76.0	62.3	2,097.6	3,870.2	IV	
43.7	62.1	126.4	664.9	70.5	62.8	2,042.3	4,383.2	V	
43.0	57.7	139.2	678.8	71.4	80.2	2,099.2	4,366.9	VI	
51.5	63.9	170.4	757.4	71.7	69.4	2,344.4	4,651.8	VII	
נתונים מנוכי עונתיות⁽²⁾									
	מנוכה עונתיות S.A.		מנוכה עונתיות S.A.	מנוכה עונתיות S.A.		מנוכה עונתיות S.A.			
49.0	56.4		622.9	76.3		1,893.7		VII 2007	
45.0	62.7		585.5	75.1		1,828.7		VIII	
45.1	54.3		601.6	63.5		1,739.9		IX	
42.5	60.7		668.9	77.1		2,009.7		X	
42.3	62.8		639.7	72.2		1,893.5		XI	
39.5	64.2		642.7	67.3		1,976.0		XII	
42.5	61.0		639.0	64.1		1,883.2		I 2008	
44.1	61.7		624.0	75.7		1,935.0		II	
42.0	62.6		645.3	75.5		2,004.7		III	
48.0	61.6		653.7	75.2		2,065.8		IV	
42.5	61.7		672.8	66.5		2,002.6		V	
41.1	59.1		699.1	75.9		2,130.3		VI	
44.9	63.0		719.2	70.6		2,264.1		VII	
נתוני מגמה									
44.3	58.6		601.9	70.5		1,796.0		VII 2007	
44.6	59.7		606.4	71.3		1,820.3		VIII	
44.4	60.8		612.2	71.6		1,844.4		IX	
43.9	61.7		618.4	71.5		1,867.9		X	
43.3	62.2		624.6	71.3		1,891.2		XI	
42.8	62.4		630.3	71.2		1,914.8		XII	
42.7	62.4		635.7	71.3		1,940.9		I 2008	
42.8	62.2		642.0	71.6		1,970.8		II	
43.1	62.0		650.1	71.9		2,005.5		III	
43.4	61.8		660.8	72.2		2,043.7		IV	
43.6	61.6		673.7	72.3		2,082.9		V	
43.6	61.5		687.5	72.2		2,119.1		VI	
43.5	61.5		700.7	72.0		2,149.7		VII	
נתוני מגמה - אחוז השינוי⁽³⁾									
0.7	1.9		0.7	1.1		1.4		VIII 2007	
-0.4	1.8		1.0	0.4		1.3		IX	
-1.1	1.5		1.0	-0.1		1.3		X	
-1.4	0.8		1.0	-0.3		1.2		XI	
-1.2	0.3		0.9	-0.1		1.2		XII	
-0.2	0.0		0.9	0.1		1.4		I 2008	
0.2	-0.3		1.0	0.4		1.5		II	
0.7	-0.3		1.3	0.4		1.8		III	
0.7	-0.3		1.6	0.4		1.9		IV	
0.5	-0.3		2.0	0.1		1.9		V	
0.0	-0.2		2.0	-0.1		1.7		VI	
-0.2	0.0		1.9	-0.3		1.4		VII	

(1) בסדרות אלה לא נמצאה השפעה עונתית.

(2) סך כל חומרי גלם מנוכה מהשפעות עונתיות, שווה לסכום קבוצת סחורות בינתיים החזרות - ראה לוח 2.

(3) השינוי באחוזים, כל תקופה לעומת קודמתה.

Table B 2. - Imports of Raw Materials, by Commodity Group

Million \$

	(1) יהלומים	(1) חומרי אנרגיה	Raw materials excluding diamonds and fuels					
			אחר	מתכות יקרות	ברזל ופלדה	מתכות אל ברזליות	גומי ופולסטיקה	כימיקלים
	Diamonds ⁽¹⁾	Fuels ⁽¹⁾	Other	Precious metals	Iron and steel	Non-ferrous metals	Rubber and plastics	Chemicals
Original data								
2006	9,054.2	7,455.6	1,102.4	210.7	1,446.9	954.3	1,806.9	3,284.3
2007	10,036.0	8,935.4	1,316.1	233.0	1,952.3	1,090.6	2,148.8	3,617.8
% change	10.8	19.8	19.4	10.6	34.9	14.3	18.9	10.2
2007 I - VII	5,507.0	4,595.3	710.6	128.3	1,100.2	633.3	1,241.0	2,041.8
2008 I - VII	6,277.2	8,097.7	977.1	120.3	1,382.6	677.1	1,415.4	2,564.8
2007 VII	903.2	698.4	121.9	23.1	151.2	109.6	203.8	343.8
VIII	722.3	978.4	113.0	19.6	158.5	100.3	172.6	308.6
IX	753.8	745.2	99.8	18.7	116.2	80.5	152.1	267.1
X	962.9	604.4	122.0	32.3	225.3	92.1	209.0	367.7
XI	876.7	940.7	116.8	19.4	169.4	97.4	185.7	302.3
XII	1,213.3	1,071.4	153.9	14.7	182.7	87.0	188.4	330.3
2008 I	678.6	1,009.3	110.0	15.2	186.2	101.2	183.1	326.0
II	890.5	866.9	125.4	16.8	150.4	75.8	175.5	334.0
III	932.3	1,308.7	153.0	21.4	204.3	109.0	222.6	368.3
IV	819.6	953.0	148.5	16.2	201.2	101.1	220.3	370.9
V	934.8	1,406.1	137.7	16.4	201.9	98.2	206.0	351.7
VI	1,080.8	1,186.9	142.0	17.3	175.0	98.7	197.1	398.8
VII	940.6	1,366.8	160.5	17.0	263.6	93.1	210.8	415.1
Seasonally adjusted data ⁽²⁾								
			מנוכה עונתיות S.A.	מנוכה עונתיות S.A.	מנוכה עונתיות S.A.	מנוכה עונתיות S.A.	מנוכה עונתיות S.A.	מנוכה עונתיות S.A.
2007 VII			110.7	20.5	167.2	103.1	194.0	314.7
VIII			109.6	18.7	157.6	98.3	178.7	329.7
IX			112.8	18.0	146.8	87.4	165.4	312.2
X			117.5	23.8	200.6	91.6	198.9	329.8
XI			130.3	20.0	172.2	94.9	192.5	316.4
XII			129.0	17.0	187.9	94.4	201.7	338.3
2008 I			126.5	18.2	176.5	92.4	180.8	313.0
II			139.3	18.7	178.8	81.2	196.9	334.3
III			148.5	19.8	183.1	101.2	204.4	339.8
IV			148.4	18.9	196.7	101.6	209.7	364.7
V			133.1	18.6	187.9	91.2	198.8	348.2
VI			145.7	18.0	176.2	101.2	203.3	400.4
VII			150.0	17.1	275.1	90.8	205.1	396.4
Trend data								
2007 VII			107.7	19.1	165.3	94.4	187.6	311.5
VIII			110.5	19.0	167.6	94.2	189.7	316.2
IX			114.1	18.8	170.0	94.0	191.1	319.6
X			118.6	18.6	172.3	94.0	192.2	321.8
XI			123.6	18.5	174.6	94.3	193.2	323.6
XII			128.8	18.5	176.8	94.9	194.4	326.0
2008 I			133.7	18.5	178.8	95.7	195.8	330.1
II			137.7	18.6	180.8	96.5	197.5	336.5
III			140.9	18.6	183.1	97.0	199.3	345.3
IV			143.3	18.6	185.7	97.1	200.9	355.8
V			145.1	18.4	188.7	96.9	202.4	366.9
VI			146.5	18.2	191.9	96.3	203.7	377.1
VII			147.6	17.9	195.0	95.6	204.8	385.5
Trend data- Percent change ⁽³⁾								
2007 VIII			2.6	-0.5	1.4	-0.2	1.1	1.5
IX			3.3	-1.1	1.4	-0.2	0.7	1.1
X			3.9	-1.1	1.4	0.0	0.6	0.7
XI			4.2	-0.5	1.3	0.3	0.5	0.6
XII			4.2	0.0	1.3	0.6	0.6	0.7
2008 I			3.8	0.0	1.1	0.8	0.7	1.3
II			3.0	0.5	1.1	0.8	0.9	1.9
III			2.3	0.0	1.3	0.5	0.9	2.6
IV			1.7	0.0	1.4	0.1	0.8	3.0
V			1.3	-1.1	1.6	-0.2	0.7	3.1
VI			1.0	-1.1	1.7	-0.6	0.6	2.8
VII			0.8	-1.6	1.6	-0.7	0.5	2.2

(1) No seasonal effect was found in these series.

(2) Total raw materials less seasonal effect equals the sum of commodity group less returns - see table A 2

(3) Percent change on previous period.

לוח ב 3. - יבוא מוצרי השקעה, לפי קבוצת סחורות Imports of Investment Goods, by Commodity Group

Million \$								מיליוני דולרים		
Transport equipment				כלי תחבורה		מכונות וציוד	סך הכל ללא אניות ומטוסים	סך כולל ⁽¹⁾		
אחר ⁽¹⁾	אניות ומטוסים ⁽¹⁾	משאיות, טנדרים ואוטובוסים	מכוניות נוסעים לצרכים עסקיים	סך הכל	Total					
Other ⁽¹⁾	Ships and aircraft ⁽¹⁾	Trucks, pick-ups and buses	Passenger cars for business purposes	Total						
Original data								נתונים מקוריים		
87.9	172.9	772.6	470.8	1,504.2	5,242.1	6,573.4	6,746.3		2006	
52.1	539.6	744.7	769.9	2,106.3	6,465.9	8,032.6	8,572.2		2007	
-40.7	212.1	-3.6	63.5	40.0	23.3	22.2	27.1	change	% שינוי	
24.1	290.8	404.7	473.9	1,193.5	3,525.8	4,428.5	4,719.3	I - VII	2007	
143.0	70.3	644.6	671.5	1,529.4	4,351.5	5,810.6	5,880.9	I - VII	2008	
4.1	228.2	78.0	82.4	392.7	628.9	793.4	1,021.6	VII	2007	
3.5	240.2	57.1	56.2	357.0	538.5	655.3	895.5	VIII		
7.1	1.0	44.4	44.6	97.1	503.1	599.2	600.2	IX		
3.0	0.6	60.5	77.7	141.8	597.0	738.2	738.8	X		
7.2	4.5	79.5	63.1	154.3	624.0	773.8	778.3	XI		
7.2	2.5	98.5	54.4	162.6	677.5	837.6	840.1	XII		
5.6	31.0	82.8	109.3	228.7	634.8	832.5	863.5	I	2008	
7.8	0.7	95.4	81.3	185.2	585.4	769.9	770.6	II		
3.6	0.6	100.2	98.6	203.0	624.5	826.9	827.5	III		
20.5	33.9	87.5	81.8	223.7	657.3	847.1	881.0	IV		
19.4	1.2	86.6	84.4	191.6	581.9	772.3	773.5	V		
38.1	1.9	106.1	105.0	251.1	613.3	862.5	864.4	VI		
48.0	1.0	86.0	111.1	246.1	654.3	899.4	900.4	VII		
Seasonally adjusted data								נתונים מנוכי עונתיות		
	מנוכה עונתיות S.A.	מנוכה עונתיות S.A.	מנוכה עונתיות S.A.	מנוכה עונתיות S.A.	מנוכה עונתיות S.A.	מנוכה עונתיות S.A.				
	71.1	67.6	138.7	593.4	736.3			VII	2007	
	45.2	58.2	103.4	559.2	666.1			VIII		
	53.2	61.1	114.3	598.5	719.8			IX		
	64.6	69.2	133.8	597.9	734.8			X		
	79.9	72.1	152.0	633.8	793.0			XI		
	85.3	46.7	132.0	619.1	758.2			XII		
	87.7	86.4	174.1	636.9	816.5			I	2008	
	101.6	96.1	197.7	609.8	815.3			II		
	108.6	142.7	251.3	603.4	858.3			III		
	121.8	112.4	234.2	649.0	903.8			IV		
	78.8	61.9	140.7	603.9	764.0			V		
	96.4	92.5	188.9	624.6	851.6			VI		
	78.2	95.1	173.3	651.8	873.1			VII		
Trend data								נתוני מגמה		
	52.4	66.4	118.8	568.2	688.5			VII	2007	
	54.9	66.9	121.8	583.5	706.9			VIII		
	59.8	68.2	128.0	596.2	726.7			IX		
	67.0	70.7	137.7	606.3	748.0			X		
	75.7	74.9	150.6	613.5	770.2			XI		
	84.7	80.3	165.0	618.2	792.0			XII		
	92.5	86.4	178.9	620.7	811.5			I	2008	
	98.1	92.0	190.1	621.7	827.2			II		
	100.5	96.3	196.8	622.2	838.6			III		
	99.9	98.8	198.7	623.3	846.4			IV		
	96.8	99.5	196.3	625.8	851.6			V		
	92.7	99.0	191.7	629.8	855.3			VI		
	88.7	98.1	186.8	634.8	858.7			VII		
Trend data- Percent change ⁽²⁾								נתוני מגמה - אחוז השינוי ⁽²⁾		
	4.8	0.8	2.5	2.7	2.7			VIII	2007	
	8.9	1.9	5.1	2.2	2.8			IX		
	12.0	3.7	7.6	1.7	2.9			X		
	13.0	5.9	9.4	1.2	3.0			XI		
	11.9	7.2	9.6	0.8	2.8			XII		
	9.2	7.6	8.4	0.4	2.5			I	2008	
	6.1	6.5	6.3	0.2	1.9			II		
	2.4	4.7	3.5	0.1	1.4			III		
	-0.6	2.6	1.0	0.2	0.9			IV		
	-3.1	0.7	-1.2	0.4	0.6			V		
	-4.2	-0.5	-2.3	0.6	0.4			VI		
	-4.3	-0.9	-2.6	0.8	0.4			VII		

(1) No seasonal effect was found in these series.

(2) Percent change on previous period.

(1) בסדרות אלה לא נמצאה השפעה עונתית.
(2) השינוי באחוזים, כל תקופה לעומת קודמתה.

Table C 1. - Agricultural Exports and other Exports, by Aggregated Industries:

לוח ג 1. - יצוא חקלאי ויצוא אחר, לפי ענפי כלכלה מקובצים

Million \$												מיליני חזרים		
Other ⁽²⁾												יצוא חקלאי		
יהלומים גולמיים (ברטון) ⁽¹⁾	לנמ"א ⁽¹⁾	אניות ומטוסים משומשים ⁽¹⁾	אחר ⁽²⁾ סך הכל ⁽¹⁾	Agricultural exports					ירקות וגידולי שדה			סך הכל		
				יצוא חקלאי לנמ"א ⁽¹⁾	פרחים	פירות			Vegetables and field crops					
						Avocado and other fruits ⁽¹⁾	Citrus fruit ⁽¹⁾	סך הכל	כותנה ויתר גידולי שדה ⁽¹⁾	ירקות ⁽¹⁾	סך הכל			
Rough diamonds (gross) ⁽¹⁾	n.e.c. ⁽¹⁾	Used ships and aircraft ⁽¹⁾	Total ⁽¹⁾	Agriculture exports n.e.c. ⁽¹⁾	Flowers	Avocado and other fruits ⁽¹⁾	Citrus fruit ⁽¹⁾	Total	Cotton and other field crops ⁽¹⁾	Vegetables ⁽¹⁾	Total	Total		
Original data												נתונים מקוריים		
3,149.3	71.5	222.2	3,443.0	102.9	216.4	162.3	79.2	241.5	88.3	382.1	470.4	1,031.2	2006	
3,849.2	71.8	0.0	3,921.0	134.8	229.9	206.8	114.1	320.9	79.3	561.1	640.4	1,326.0	2007	
22.2	0.4		13.9	31.0	6.2	27.4	44.1	32.9	-10.2	46.8	36.1	28.6	change	% שינוי
2,279.5	41.7	0.0	2,321.2	83.2	162.1	98.6	68.3	166.9	37.3	415.2	452.5	864.7	I - VII	2007
2,854.1	36.9	0.0	2,891.0	110.2	155.1	76.8	64.6	141.4	54.8	361.6	416.4	823.1	I - VII	2008
323.9	5.0	0.0	328.9	11.3	12.1	12.3	0.1	12.4	3.2	16.0	19.2	55.0	VII	2007
277.6	5.1	0.0	282.7	10.0	10.4	20.0	0.4	20.4	3.0	9.0	12.0	52.8	VIII	
282.6	4.4	0.0	287.0	9.1	10.3	22.0	4.0	26.0	7.2	10.5	17.7	63.1	IX	
392.1	9.3	0.0	401.4	9.0	12.1	27.0	10.1	37.1	10.0	19.6	29.6	87.8	X	
299.9	6.6	0.0	306.5	11.6	14.2	19.5	15.0	34.5	11.0	46.1	57.1	117.4	XI	
317.5	4.7	0.0	322.2	11.9	20.8	19.7	16.3	36.0	10.8	60.7	71.5	140.2	XII	
472.4	9.9	0.0	482.3	11.4	27.7	23.0	19.2	42.2	10.4	68.3	78.7	160.0	I	2008
393.5	4.4	0.0	397.9	11.2	36.1	13.0	21.7	34.7	8.4	68.6	77.0	159.0	II	
369.4	3.6	0.0	373.0	12.6	29.9	9.3	15.2	24.5	4.9	94.2	99.1	166.1	III	
307.7	4.7	0.0	312.4	17.2	19.8	3.1	5.4	8.5	3.6	39.6	43.2	88.7	IV	
405.5	6.5	0.0	412.0	23.0	17.8	7.5	2.0	9.5	4.9	38.3	43.2	93.5	V	
484.2	5.7	0.0	489.9	20.2	11.3	10.5	1.1	11.6	8.4	35.2	43.6	86.7	VI	
421.4	2.1	0.0	423.5	14.6	12.5	10.4	0.0	10.4	14.2	17.4	31.6	69.1	VII	
Seasonally adjusted data												נתונים מונחי עונתיות		
				מנכה עונתיות S.A.		מנכה עונתיות S.A.		מנכה עונתיות S.A.		מנכה עונתיות S.A.				
				18.7	24.0	45.1	97.9	VII	2007					
				18.3	26.8	41.3	96.5	VIII						
				20.1	25.5	45.6	102.0	IX						
				18.9	35.0	47.3	112.8	X						
				19.0	28.0	61.8	122.0	XI						
				20.2	28.2	55.3	116.4	XII						
				17.5	29.3	56.0	115.5	I	2008					
				19.4	26.4	44.5	103.5	II						
				19.1	20.3	61.0	114.6	III						
				17.6	14.3	31.3	79.3	IV						
				15.3	18.5	46.5	98.3	V						
				18.4	21.3	55.8	111.3	VI						
				19.2	22.1	57.9	112.5	VII						
Trend data												נתוני מגמה		
				19.0	26.3	48.2	104.0	VII	2007					
				18.9	26.7	47.9	103.6	VIII						
				18.9	27.1	48.6	104.6	IX						
				18.9	27.4	49.7	106.4	X						
				18.9	27.5	50.7	108.2	XI						
				18.9	27.1	51.2	109.3	XII						
				18.8	26.2	51.0	109.4	I	2008					
				18.7	24.9	50.5	108.6	II						
				18.6	23.6	50.0	107.6	III						
				18.5	22.4	50.2	107.1	IV						
				18.5	21.6	51.1	107.5	V						
				18.5	21.1	52.9	109.0	VI						
				18.5	21.0	55.2	111.1	VII						
Trend data- Percent change⁽³⁾												נתוני מגמה - אחוז השינוי⁽³⁾		
				-0.5	1.5	-0.6	-0.4	VIII	2007					
				0.0	1.5	1.5	1.0	IX						
				0.0	1.1	2.3	1.7	X						
				0.0	0.4	2.0	1.7	XI						
				0.0	-1.5	1.0	1.0	XII						
				-0.5	-3.3	-0.4	0.1	I	2008					
				-0.5	-5.0	-1.0	-0.7	II						
				-0.5	-5.2	-1.0	-0.9	III						
				-0.5	-5.1	0.4	-0.5	IV						
				0.0	-3.6	1.8	0.4	V						
				0.0	-2.3	3.5	1.4	VI						
				0.0	-0.5	4.3	1.9	VII						

(1) No seasonal effect was found in these series.
 (2) Its origin is not in manufacturing or agriculture.
 (3) Percent change on previous period.

(1) בסדרות אלה לא נמצאה השפעה עונתית.
 (2) מקורו אינו בתעשייה או בחקלאות.
 (3) השינוי באחוזים, כל תקופה לעומת קודמתה.

לוח ג 2- יצוא תעשייתי, לפי ענפי כלכלה מקובצים

מיליוני דולרים

מוצרי מתכת בסיסית	גומי ופולטיקה	כימיקלים	זיקוק נפט ⁽¹⁾	עץ, ריהוט, ניר ודפוס	טקסטיל, הלבשה ועור	מזון ומשקאות	כרייה, חציבה ומינרלים אל-מתכתיים	סך הכל, ללא יהלומים מלוטשים	סך הכל ⁽¹⁾	
Products of basic metal	Rubber and plastics	Chemicals	Refining petroleum ⁽¹⁾	Wood, furniture, paper and printing	Textiles, clothing and leather	Food and beverages	Mining quarrying and non-metallic minerals	Total excluding polished diamonds	Total ⁽¹⁾	
נתונים מקוריים										
1,989.3	1,784.5	8,323.1	47.2	338.0	1,082.2	710.1	798.2	29,335.5	42,315.2	2006
2,377.6	2,035.4	9,578.9	385.9	382.1	1,016.2	846.2	1,151.4	34,275.6	48,845.0	2007
19.5	14.1	15.1	717.6	13.0	-6.1	19.2	44.2	16.8	15.4	שינוי %
1,340.2	1,199.2	5,306.5	185.9	207.1	593.4	501.4	586.7	19,161.9	27,788.9	I - VII 2007
2,012.5	1,376.2	7,850.4	160.5	205.2	608.5	518.5	1,412.6	24,042.4	34,559.7	I - VII 2008
192.5	180.3	813.9	47.9	35.9	85.9	67.6	99.4	2,951.8	4,240.3	VII 2007
181.3	175.1	746.0	62.8	34.4	86.7	69.2	118.2	2,733.5	3,714.1	VIII
161.4	137.1	670.5	4.9	28.5	72.8	55.7	95.7	2,571.9	3,776.0	IX
194.1	157.7	810.2	63.9	28.7	82.8	59.0	108.5	2,965.0	4,276.1	X
236.5	194.1	1,013.3	67.9	40.2	89.9	89.5	113.8	3,354.8	4,738.4	XI
264.1	172.2	1,032.4	0.5	43.2	90.6	71.4	128.5	3,488.5	4,551.5	XII
264.7	174.6	787.2	31.3	28.9	81.7	67.5	152.1	2,980.3	4,541.1	I 2008
311.7	204.5	844.9	0.8	28.6	91.5	78.0	132.8	2,955.9	4,415.8	II
305.2	216.7	1,211.7	106.4	31.2	91.1	95.1	176.1	3,819.1	5,344.5	III
297.5	193.4	1,140.5	1.0	28.1	75.9	72.1	189.4	3,272.4	4,492.7	IV
301.6	193.5	1,135.7	7.1	27.6	85.6	65.9	210.1	3,424.2	5,101.7	V
268.8	209.1	1,511.6	6.7	29.9	95.1	74.9	308.8	4,043.4	5,506.4	VI
263.0	184.4	1,218.8	7.2	30.9	87.6	65.0	243.3	3,547.1	5,157.5	VII
נתונים מוכי עונתיות										
מנכה עונתיות S.A.	מנכה עונתיות S.A.		מנכה עונתיות S.A.		מנכה עונתיות S.A.					
194.9	185.8	849.6	33.6	85.6	73.3	105.3	3,022.0			VII 2007
192.3	173.3	773.3	32.7	87.8	69.0	103.3	2,849.4			VIII
206.8	165.9	703.4	30.9	80.9	66.7	92.6	2,692.9			IX
206.3	168.2	856.4	29.4	83.1	67.1	99.1	3,105.4			X
227.3	183.9	945.8	33.2	87.4	79.6	101.7	3,200.1			XI
282.2	187.0	1,023.2	38.7	84.8	71.2	130.5	3,249.2			XII
262.7	177.2	899.0	31.7	84.0	63.8	167.9	3,175.2			I 2008
293.8	197.4	952.4	31.9	90.0	69.7	170.2	3,188.8			II
277.2	194.7	1,082.0	31.3	83.4	80.7	172.5	3,417.5			III
285.8	193.1	1,151.0	31.5	82.7	70.3	213.3	3,415.8			IV
278.4	188.9	1,078.6	29.3	86.3	68.0	198.3	3,336.3			V
261.9	200.0	1,299.9	29.8	91.9	71.7	312.0	3,658.8			VI
268.7	187.2	1,215.6	28.7	85.7	69.5	256.0	3,593.8			VII
נתוני מגמה										
195.4	170.0	783.0	32.3	84.8	70.1	94.9	2,833.8			VII 2007
201.1	172.3	810.5	32.4	84.5	69.4	97.1	2,897.9			VIII
209.3	174.5	840.4	32.3	84.2	68.8	101.1	2,965.2			IX
220.3	177.0	872.1	32.2	84.1	68.4	107.8	3,033.2			X
233.3	180.0	905.4	32.1	84.4	68.2	118.2	3,100.1			XI
247.1	183.4	941.0	32.0	84.7	68.3	132.4	3,165.1			XII
259.7	186.8	979.6	31.8	85.1	68.5	150.2	3,228.3			I 2008
269.5	189.8	1,021.2	31.6	85.5	68.8	170.3	3,290.7			II
275.6	192.1	1,064.6	31.2	85.8	69.2	191.4	3,352.4			III
278.0	193.3	1,107.6	30.8	86.1	69.4	211.8	3,412.2			IV
277.6	193.8	1,147.4	30.4	86.3	69.5	229.9	3,467.2			V
275.9	193.8	1,181.4	30.0	86.4	69.6	244.6	3,514.2			VI
274.2	193.8	1,208.6	29.9	86.5	69.7	255.6	3,553.1			VII
נתוני מגמה - אחוז השינוי⁽²⁾										
2.9	1.4	3.5	0.3	-0.4	-1.0	2.3	2.3			VIII 2007
4.1	1.3	3.7	-0.3	-0.4	-0.9	4.1	2.3			IX
5.3	1.4	3.8	-0.3	-0.1	-0.6	6.6	2.3			X
5.9	1.7	3.8	-0.3	0.4	-0.3	9.6	2.2			XI
5.9	1.9	3.9	-0.3	0.4	0.1	12.0	2.1			XII
5.1	1.9	4.1	-0.6	0.5	0.3	13.4	2.0			I 2008
3.8	1.6	4.2	-0.6	0.5	0.4	13.4	1.9			II
2.3	1.2	4.2	-1.3	0.4	0.6	12.4	1.9			III
0.9	0.6	4.0	-1.3	0.3	0.3	10.7	1.8			IV
-0.1	0.3	3.6	-1.3	0.2	0.1	8.5	1.6			V
-0.6	0.0	3.0	-1.3	0.1	0.1	6.4	1.4			VI
-0.6	0.0	2.3	-0.3	0.1	0.1	4.5	1.1			VII

(1) בסדרות אלה לא נמצאה השפעה עונתית.
(2) השינוי באחוזים, כל תקופה לעומת קודמתה.

Table C 2. - Manufacturing Exports, by Aggregated Industries

Million \$

	יהלומים (1) מלוטשים	מוצרים לנמ"א	תכשיטים, וצרפות Jewellery and silversmith	כלי הובלה (1)	ציוד חשמלי ומנועים Electrical equipment and motors	ציוד תקשורת, בקרה, רפואי מדעי Communication, medical, scientific equipment	רכיבים אלקטרוניים ומחשבים Electronic components and computers	מכונות וציוד Machinery and equipment
Original data								
2006	12,979.7	167.5	537.3	1,300.6	693.7	7,101.7	2,621.6	1,840.5
2007	14,569.4	203.2	604.5	1,999.4	848.8	7,997.2	2,502.3	2,346.5
% change	12.2	21.3	12.5	53.7	22.4	12.6	-4.6	27.5
2007 I - VII	8,627.0	108.8	312.4	1,057.2	492.0	4,518.3	1,436.0	1,316.8
2008 I - VII	10,517.3	121.3	374.9	1,110.2	530.6	4,837.2	1,422.9	1,500.9
2007 VII	1,288.5	17.1	39.7	221.2	76.3	648.6	198.2	227.3
VIII	980.6	16.4	48.6	154.5	75.7	575.3	192.8	196.5
IX	1,204.1	17.8	50.6	138.7	59.8	692.6	207.9	177.9
X	1,311.1	16.3	65.7	268.8	58.3	633.3	202.1	215.6
XI	1,383.6	22.3	76.0	194.9	68.2	723.4	199.2	225.6
XII	1,063.0	21.6	51.2	185.3	94.8	854.3	264.3	214.1
2008 I	1,560.8	16.4	56.9	150.0	79.7	672.8	220.2	196.3
II	1,459.9	17.7	55.1	147.6	69.8	570.8	178.0	224.1
III	1,525.4	18.3	50.4	154.2	70.8	869.2	199.7	223.0
IV	1,220.3	16.8	47.5	148.4	68.3	593.2	187.6	212.7
V	1,677.5	16.8	47.8	139.6	77.1	669.2	216.1	230.5
VI	1,463.0	19.9	63.7	160.8	88.6	783.6	202.2	219.7
VII	1,610.4	15.4	53.5	209.6	76.3	678.4	219.1	194.6
Seasonally adjusted data								
		מנחה עונתיות S.A.	מנחה עונתיות S.A.		מנחה עונתיות S.A.	מנחה עונתיות S.A.	מנחה עונתיות S.A.	מנחה עונתיות S.A.
2007 VII		19.8	47.1		80.5	656.2	193.8	247.5
VIII		15.9	50.6		69.9	696.2	186.9	198.9
IX		19.4	52.6		64.8	669.8	218.9	196.5
X		15.4	53.4		69.0	709.1	219.9	216.2
XI		17.9	57.5		71.6	709.7	206.3	233.4
XII		19.9	54.7		81.0	687.6	231.7	190.9
2008 I		19.4	59.0		84.8	733.5	223.7	208.1
II		17.7	57.8		72.7	690.8	188.7	227.2
III		17.3	49.1		68.5	735.9	184.8	204.5
IV		19.8	57.0		73.3	703.6	191.3	213.8
V		18.6	49.2		70.7	696.7	227.8	218.9
VI		19.0	72.2		79.8	662.9	199.1	212.3
VII		17.1	63.7		73.0	717.3	207.2	207.3
Trend data								
2007 VII		18.2	50.4		68.2	683.5	206.5	198.1
VIII		18.2	51.2		68.9	691.6	207.1	201.2
IX		18.1	52.3		70.1	698.4	208.9	204.3
X		18.1	53.5		71.6	703.8	210.6	207.4
XI		18.1	54.8		73.2	707.6	211.3	210.0
XII		18.2	55.9		74.4	709.6	210.1	212.0
2008 I		18.4	56.9		75.0	709.6	207.2	213.2
II		18.5	57.7		75.0	708.0	203.4	213.7
III		18.6	58.4		74.6	705.3	199.9	213.6
IV		18.6	59.2		74.2	702.8	197.7	213.3
V		18.5	59.9		73.8	702.0	197.7	212.7
VI		18.3	60.6		73.8	703.2	199.5	212.4
VII		18.2	61.3		74.2	706.3	202.5	212.4
Trend data- Percent change (2)								
2007 VIII		0.0	1.6		1.0	1.2	0.3	1.6
IX		-0.5	2.1		1.7	1.0	0.9	1.5
X		0.0	2.3		2.1	0.8	0.8	1.5
XI		0.0	2.4		2.2	0.5	0.3	1.3
XII		0.6	2.0		1.6	0.3	-0.6	1.0
2008 I		1.1	1.8		0.8	0.0	-1.4	0.6
II		0.5	1.4		0.0	-0.2	-1.8	0.2
III		0.5	1.2		-0.5	-0.4	-1.7	0.0
IV		0.0	1.4		-0.5	-0.4	-1.1	-0.1
V		-0.5	1.2		-0.5	-0.1	0.0	-0.3
VI		-1.1	1.2		0.0	0.2	0.9	-0.1
VII		-0.5	1.2		0.5	0.4	1.5	0.0

(1) No seasonal effect was found in these series.

(2) Percent change on previous period

Table C 4. - Manufacturing Exports by Technological Intensity ⁽¹⁾

לוח ג 4. - יצוא תעשייתי, לפי העוצמה הטכנולוגית ⁽¹⁾

Industry	VII		I - VII		2007	2006	ענף	סמל Code
	2008	2007	2008	2007				
Total, excl. diamonds	3,547	2,952	24,042	19,162	34,276	29,336	סך הכל, ללא יהלומים	
High - technology industries	1,505	1,349	10,097	8,838	15,781	14,156	תעשיות טכנולוגיה עילית	
Office & computing equipment	94	83	579	510	957	845	מכונות למשרד ומיחשוב	30
Electrical components	125	116	844	927	1,545	1,777	רכיבים אלקטרוניים	32
Aircraft	180	202	1,002	948	1,645	1,145	כלי טיס	355
Electronic communication equipment	324	314	2,200	2,097	3,618	3,375	ציוד תקשורת אלקטרוני	33
Equipment for control & supervision	354	335	2,638	2,421	4,379	3,727	ציוד לבקרה ולפיקוח	34
Pharmaceutical products	428	300	2,835	1,936	3,637	3,288	תרופות	245
Medium - high technology industries	1,098	884	7,314	5,474	9,875	7,770	תעשיות טכנולוגיה מעורבת - עילית	
Chemicals & refining petroleum, excl. pharmaceutical products	798	562	5,176	3,557	6,328	5,083	כימיקלים וזיקוק נפט למעט תרופות	24+23-(245)
Machinery & equipment	195	227	1,501	1,317	2,347	1,841	מכונות וציוד	29
Electrical equipments & electrical motors	76	76	531	492	849	694	ציוד ומנועים חשמליים	31
Motor vehicles	28	18	100	103	342	144	כלי רכב מנועיים	35-(353+355+358)
Transport equipment n.e.c.	1	1	6	5	9	10	ציוד הובלה לנמ"א	358
Medium - low technology industries	760	529	5,299	3,548	6,375	5,279	תעשיות טכנולוגיה מעורבת - מסורתית	
Mining & quarrying	208	71	1,183	406	826	505	כרייה וחציבה	10-11-12-13
Rubber & plastic products	184	180	1,376	1,199	2,035	1,785	גומי ופלסטיקה	25
Non-metallic mineral products	36	29	230	181	326	293	מינרליים אל-מתכתיים	26
Non-ferrous & precious metals	37	34	284	272	460	365	מתכות אל-ברזליות ויקרות	271,273
Iron & steel foundries	34	22	255	175	297	271	מוצרי ברזל ופלדה	270,272,274
Metal products	192	137	1,474	893	1,621	1,354	מוצרי מתכת	28
Ships & boats	1	0	2	1	3	2	כלי שיט	353
Jewellery Goldsmith & silversmiths'	54	40	375	312	605	537	תכשיטים וצורפות	38
Articles n.e.c.	15	17	121	109	203	168	מוצרים לנמ"א	39
Low - technology industries	184	189	1,332	1,302	2,245	2,130	תעשיות טכנולוגיה מסורתית	
Food products, beverages & tobacco	65	68	519	501	846	710	מוצרי מזון, משקאות וטבק	14-15-16
Textiles, wearing apparel & leather	88	86	609	593	1,016	1,082	טקסטיל, הלבשה ועור	17-18-19
Paper, printing & paper products	24	31	174	184	341	298	נייר, דפוס ומוצרי	21,22
Wood & furniture	7	5	31	23	41	40	מוצרי עץ ורהיטים	20,36

(1) According to OECD/2003 classification, excl.:
Group 23 - "Petroleum & its products" is included in "Chemicals & refining petroleum" in "Medium-high-technology Industries".

(1) לפי סיווג OECD /2003 למעט:
ענף 23 - "נפט ומוצרי" סווג ביחד עם "כימיקלים וזיקוק נפט" בתעשיות "טכנולוגיה מעורבת עילית".

Table C 5. - Manufacturing Exports by Technological Intensity (Net) ⁽¹⁾

לוח ג 5 - יצוא תעשייתי, לפי העוצמה הטכנולוגית (נטו) ⁽¹⁾

Million \$				מיליוני דולרים	
תעשיות טכנולוגיה מסורתית	תעשיות טכנולוגיה מעורבת מסורתית	תעשיות טכנולוגיה מעורבת עילית	תעשיות טכנולוגיה עילית		
Low Technology Industries	Medium - low Technology Industries	Medium - high Technology Industries	High Technology Industries		
Original data				נתונים מקוריים	
188.1	525.4	878.3	1,339.6	VII	2007
189.0	536.0	789.7	1,200.7	VIII	
155.8	459.0	734.2	1,202.8	IX	
169.3	538.6	965.2	1,271.4	X	
218.4	639.3	987.3	1,491.0	XI	
204.0	633.9	896.6	1,733.3	XII	
176.8	660.0	865.4	1,256.8	I	2008
196.8	716.9	862.1	1,159.9	II	
216.0	761.7	1,185.1	1,631.3	III	
175.0	740.0	1,068.2	1,269.0	IV	
178.1	765.3	1,046.7	1,414.2	V	
198.9	865.8	1,149.6	1,808.2	VI	
182.5	755.3	1,092.1	1,496.4	VII	
Seasonally adjusted data				נתונים מנוכי עונתיות	
193.9	546.1	901.2	1,373.4	VII	2007
188.4	528.2	822.3	1,284.2	VIII	
177.0	529.8	785.4	1,206.1	IX	
178.8	534.8	943.5	1,422.6	X	
200.4	582.1	1,014.4	1,385.6	XI	
194.4	663.8	919.3	1,482.8	XII	
177.3	694.5	937.5	1,352.2	I	2008
188.0	747.8	938.9	1,335.9	II	
194.0	705.4	1,063.7	1,438.0	III	
182.3	773.6	1,014.6	1,460.6	IV	
182.5	741.4	967.0	1,467.8	V	
190.4	841.4	1,036.5	1,586.9	VI	
185.1	791.3	1,080.7	1,538.3	VII	
Trend data				נתוני מגמה	
186.4	521.9	824.4	1,266.4	VII	2007
185.8	532.4	856.1	1,284.7	VIII	
185.1	548.5	885.6	1,302.5	IX	
184.4	571.5	910.5	1,319.1	X	
183.7	601.4	929.4	1,335.9	XI	
183.1	636.2	942.7	1,354.4	XII	
182.6	672.8	952.6	1,376.0	I	2008
182.4	707.8	962.5	1,401.6	II	
182.3	737.7	974.5	1,430.3	III	
182.6	760.7	989.7	1,459.8	IV	
183.1	776.6	1,007.4	1,486.5	V	
183.9	786.4	1,025.8	1,507.7	VI	
184.8	792.4	1,043.2	1,523.4	VII	
Trend data- Percent change ⁽²⁾				נתוני מגמה - אחוז השינוי ⁽²⁾	
-0.3	2.0	3.8	1.4	VIII	2007
-0.4	3.0	3.4	1.4	IX	
-0.4	4.2	2.8	1.3	X	
-0.4	5.2	2.1	1.3	XI	
-0.3	5.8	1.4	1.4	XII	
-0.3	5.8	1.1	1.6	I	2008
-0.1	5.2	1.0	1.9	II	
-0.1	4.2	1.2	2.0	III	
0.2	3.1	1.6	2.1	IV	
0.3	2.1	1.8	1.8	V	
0.4	1.3	1.8	1.4	VI	
0.5	0.8	1.7	1.0	VII	

(1) Excl. diamonds, aircraft and ships.
 (2) Percent change on previous period.

(1) ללא יהלומים, אניות ומטוסים.
 (2) השינוי באחוזים, כל תקופה לעומת קודמתה.