

# PRESS RELEASE

info@cbs.gov.il

http://www.cbs.gov.il

FAX. 02-6521340

Jerusalem,  
January 17, 2011  
011/2011

Previous Press Release on Foreign Trade appeared on December 19, 2010

## Summary of Israel's Foreign Trade by Country – 2010

### In 2010:

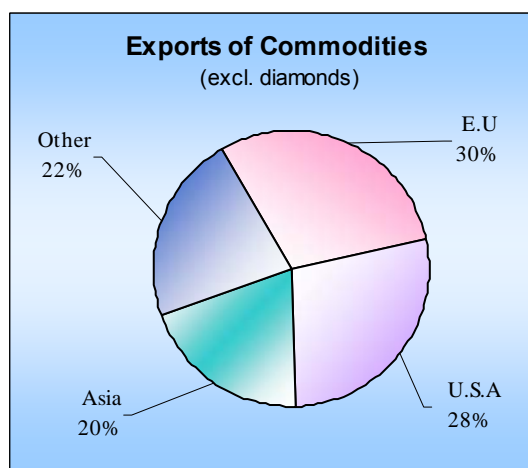
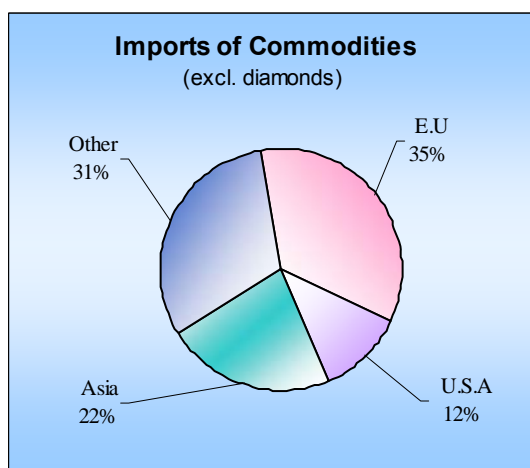
- The more significant increase in imports (excluding diamonds) by country were recorded in imports from China, USA, Turkey, Germany and Italy
- The more significant increase in exports (excluding diamonds) by country were recorded in exports to China, UK, Malaysia, India, Netherlands, Germany and Costa Rica
- Surplus in trade (excluding diamonds) was recorded with USA, India, Cyprus, Brazil, Costa Rica and Russia
- The biggest deficit in trade (excluding diamonds) was recorded with China, Switzerland, Germany, Italy and Japan
- The trade deficit with OECD countries rose by 36% compared to 2009

### Presentation

In 2010, **import of goods** (excluding diamonds) totaled \$50.7 billion, **export of goods** (excluding diamonds) totaled \$42.0 billion and the **trade deficit** (excluding diamonds) totaled \$8.7 billion.

**Import of goods** in 2010 point to a rise of 24.8%, compared with 2009. **Import of goods** (excluding diamonds), increased in 2010 by 20.6%, compared with the previous year.

**Export of goods** in 2010 point to a rise of 21.9%, compared with 2009. **Export of goods** (excluding diamonds), increased in 2010 by 15.7% (\$5.7 B) compared with 2009.



Written by Helen Brusilovsky

For explanations and clarifications regarding the contents of this Press Release,  
Please contact the Press Relations Unit, at 02-652 7845, 050-623 5124

This information was provided by the Central Bureau of Statistics, based on preliminary data regarding goods that passed through Customs. Final data for 2010 will be published on April 2011. Data do not include trade between Israel and the Palestinian Authority. In addition, the data do not include trade of services that include, among others, export of software. Data on all exports and imports of goods and services are published as part of the Balance of Payments, every quarter.

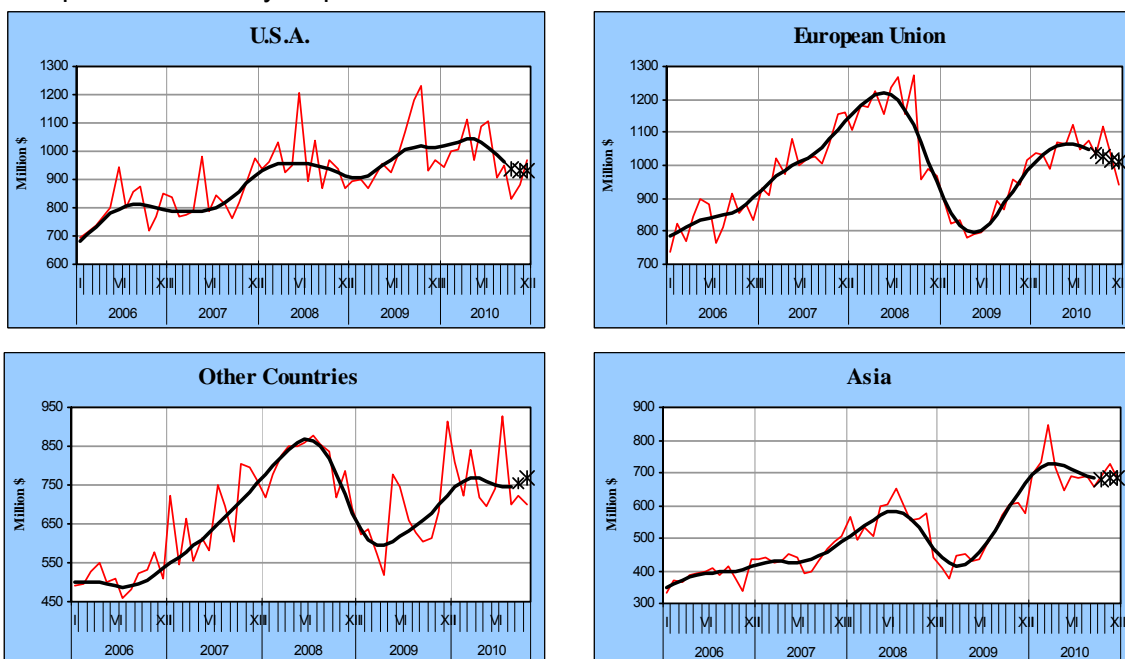
Imports are valued c.i.f., and exports are valued f.o.b.

Development of trade in goods in 2010, compared with 2009, was influenced mainly by the change in quantities and prices throughout 2010, as well as by changes in the value of the dollar against other currencies in which **import and export** transactions are conducted. In 2010 the **American Dollar** rose in comparison to the **Euro** by 4.8%, compared to the **Pound Sterling**, by 1.0%. Compared to the **Swiss Franc**, the American Dollar dropped by 4.1% and compared to the **Japanese Yen**, the dollar dropped by 6.3%.

Main Trading Country Groups (in US million dollars)	Imports		Exports		Trade Balance	
	2010	2009	2010	2009	2010	2009
Total	59,122.4	47,368.2	58,430.6	47,935.5	-691.8	567.3
European Union	20,401.8	17,491.7	15,390.5	12,389.8	-5,011.3	-5,101.9
U.S.A.	6,698.2	5,849.1	18,530.7	16,774.1	11,832.5	10,925.0
Asia	13,316.5	10,082.1	13,822.0	9,520.5	505.5	-561.6
Other Countries	18,705.9	13,965.3	10,687.4	9,251.1	-8,018.5	-4,694.2

In December 2010, **import of goods** (excluding diamonds) totaled \$4.8 billion, **export of goods** (excluding diamonds) totaled \$4.0 billion and the **trade deficit** (excluding diamonds) totaled \$0.8 billion.

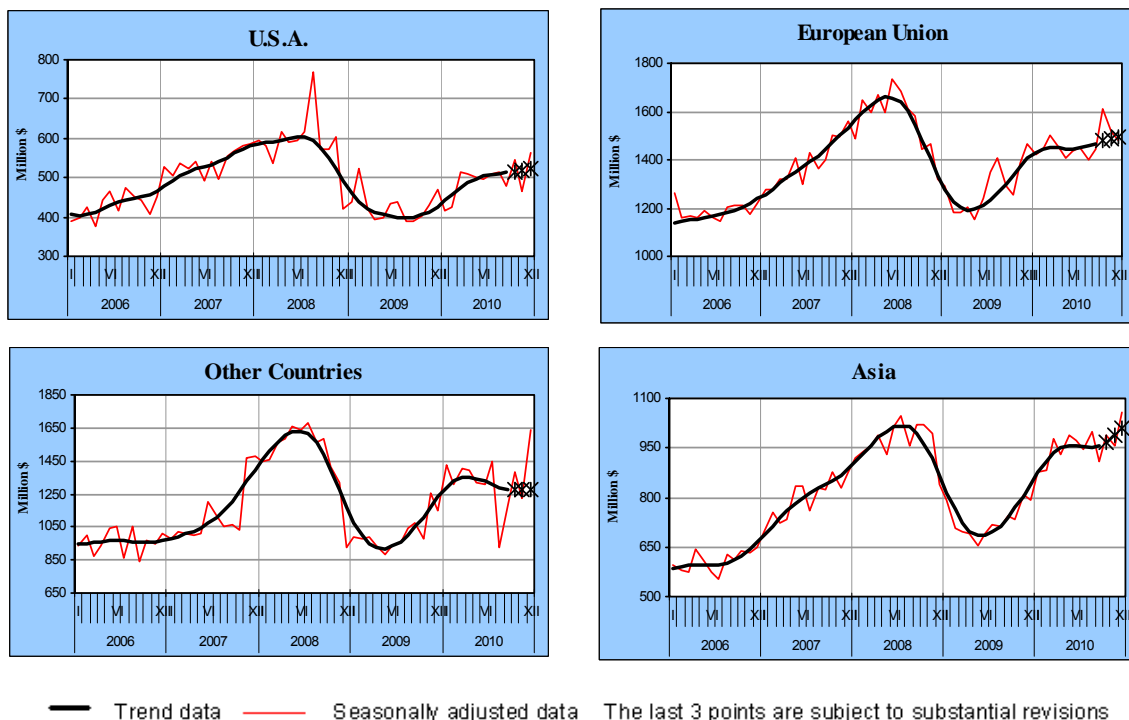
The **trend data** calculated by the Central Bureau of Statistics, seasonally adjusted and adjusted for irregular elements, point to a rise of 6.6% of **export of goods** in the last three months of 2010, after a drop of 7.8% in July-September 2010.



— Trend data — Seasonally adjusted data The last 3 points are subject to substantial revisions

Exports to **European Union** countries point to a drop of 9.6%, at annual rate in the last three months of 2010. Exports to the **U.S.A.** point to a drop of 11.4% during the same period. Exports to the **Asian** countries point to a rise of 0.9% during the same period.

In the last three months of 2010, **import of goods** point to a rise of 20.2%, at annual rate. Imports from **European Union** countries point to a rise of 6.9% during October-December 2010, at an annual rate. Imports from U.S.A. point to a rise of 10.0% during the same months. Imports from **Asian** countries point to a rise of 23.2% during the same period.



**Next Press Release on “Israel’s Foreign Trade by Country” will appear on February 17, 2011.**

Related links and publications

Definitions and explanations

“Foreign Trade Statistics Monthly”

“Israel’s Foreign Trade” – Press Release

“Foreign Trade Price Indices” – Press Release

“Imports by Country of Origin” – Press Release

“Foreign Exchange Rates” – Press Release (Hebrew only)

“Trade Balance by Technological Intensity” – Press Release

“Exports by Country and Industry” – Press Release

“Foreign Trade of Israel” – Statistilite Series No 41

“Foreign Trade of Israel-2005 Selected Countries” – Statistilite Series No 66

Exports, by Commodities and Countries, 2008-2009 (Internet only)

Exports, by Commodities and Countries, 1996-2007 (CD only)

Imports, by Commodities and Countries, 2007-2009 (Internet only)

Imports, by Commodities and Countries, 2007 (CD only)

Imports, by Commodities and Countries, 2002-2006 (CD only)

Imports, by Commodities and Countries, 1996-2001 (CD only)

## DEFINITIONS AND EXPLANATIONS

### The Population Investigated

1. Statistical data on foreign trade presented in the publications of the Central Bureau of Statistics and in this Monthly Bulletin relate solely to import and export of commodities. Data on import and export of services and the remaining international business of Israel are included in the Balance of Payments published quarterly in the "Monthly Bulletin of Statistics" and in greater detail in the Current Statistics series.
2. Imports and exports are recorded according to the "Special System"<sup>1</sup>, by which only that portion of the trade flowing through customs is included. Accordingly, imports do not include goods imported and stored in bonded warehouses, and exports do not include goods exported from these warehouses. Neither included are goods in transit.
  - a. **Gross imports** include consignments imported from abroad for local use (including finishing and repair) which are freed by the Customs immediately after unloading, or which were freed after a time from the bonded warehouses of the Customs. Import data do not include commodities put into bonded warehouses, except for a number of productive enterprises, which are recognized as bonded warehouses. Imports do not include consignments which were exported in the past and which were returned to Israel without any further processing.
  - b. **Net imports** are obtained by deducting from gross imports the value of goods imported earlier and returned to a supplier abroad without processing or changing its form. As there is no way of identifying the date of entry of the goods to Israel which are being returned abroad, the deduction is done on the date of return abroad. For this reason the returns are deducted from the grand total and not from items detailed by branches.
  - c. **Gross exports** include the flow of products abroad, except consignments of commodities which were previously imported and then returned to a supplier abroad without any processing. It also includes part-finished goods which are sent abroad for additional processing and which eventually will be returned to the sender, and goods which were imported and sold to abroad without processing, when the purchaser is not the supplier.
  - d. **Net exports** are obtained by deducting from the value of gross exports the value of goods, which were previously exported but were returned to the Israeli supplier without processing or change of form. As there is no means of identifying the original date of consignment abroad of exports returned from abroad, the deduction operates on the date of return rather than the date of original export. For this reason returns are deducted from the grand total and not from items detailed by branches (excluding diamonds).
3. The date of statistical registration of the import is the date of the release of the goods by the Customs authorities, whereas for exports it is the date of loading the goods on ship, airplane, or trucks (land transport to Jordan).
4. Foreign trade statistics include, among others, the following goods and business activities:
  - a. Personal import and export: personal effects of immigrants, seamen, returning residents and foreign diplomats (import) and of emigrants (export).
  - b. Parcels dispatched by mail (in recompense or as gifts).
  - c. Ships and aircraft are included in import and export data whether they have passed through Customs or not. Imports include ships purchased from abroad by Israeli companies and sailing under Israeli flag or a foreign flag. It should be noted that ships and aircraft do not undergo the procedure of passing through Customs.

Exports include ships and aircraft, which were produced in Israel and those, which were previously purchased and later resold abroad in the reporting period.
  - d. Products for exhibitions and fairs are, in principle, included in foreign trade data only if they were sold or given away free of charge. Returns from exhibitions are not included in foreign trade but there are difficulties in identifying these flows.

---

<sup>1</sup> United Nations, *International Trade Statistics Concepts and Definitions*, Statistical Papers, Series M, No. 52/ Rev. 2, 1998.

- e. Equipment imported or exported on a lease basis (e.g., electronic computers and other data processing equipment).
- f. Gold and silver (non-monetary), both in processed or partly processed form, scrap and remnants intended for industry, smelting or medical use.
- g. Fuel and food supplied to foreign ships and aircraft in Israeli ports are included in export since 1969, even though they did not pass through Customs.

#### 5. Special transactions and commodities not included in foreign trade statistics:

- a. Commodities imported or exported for a limited period of time and returned without having undergone any processing, e.g. personal effects of tourists (including cars); goods intended for exhibitions, fairs, displays, etc.; commodities intended for temporary storage only; equipment sent to perform contract work and returned after use.
- b. Effects purchased by tourists in Israel or by Israelis abroad. An estimate of the value of these purchases is included in the account of services in the Balance of Payments. In cases where duty has been charged on goods purchased by Israeli tourists, the goods were included in total imports.
- c. Engines and parts of aircraft sent by local airlines to their branches or representatives abroad for replacement or repairs and those sent to Israel from branches abroad for repairs or replacement.
- d. Fish caught by Israeli fishing vessels.
- e. Monetary gold, securities and legal tender (notes and coins) or currency about to be made legal tender (local currency notes printed abroad are recorded according to the value of the printers and not according to face value).
- f. Fuel and food supplied to Israeli ships and aircraft in foreign ports (recorded in Balance of Payments as services).
- g. Ballast and dunnage supplied to foreign ships in Israeli ports and to Israeli ships in foreign ports.
- h. Imported military equipment and weapons (estimated value is included in the commodities account in the Balance of Payments). The flow is not included in the import of goods because it does not undergo the usual procedure of passing through customs.

#### 6. The trade with the Palestinian Authority

The trade data do not include the transactions with residents of the Palestinian Authority. The data also do not include the value of the import and export commodities, which were released by the Israeli customs and belong to residents of the Palestinian Authority. Data on trade with Palestinian Authority are published within the Balance of Payment.

#### Classification of Commodities

1. The classification, according to which foreign trade statistics are processed and published, is the classification that serves the customs<sup>2</sup> in handling the import and export shipments. Import data are classified according to the details in the customs tariff<sup>3</sup> and export data - according to the "Classification of Export Commodities"<sup>4</sup>.

As of January 1<sup>st</sup> 1988, the customs' classification of commodities, which serves the customs and statistical data processing, was based on a new international nomenclature, which was prepared by the Customs Cooperation Council – "The Harmonized Commodity and Coding System" (H.S.)<sup>5</sup>. This nomenclature replaces the Nomenclature "Classification of Goods in Customs Tariff" of which the first version was introduced at 1962 named "Brussels' Tariff Nomenclature" (B.T.N.) and the last version was

<sup>2</sup> <http://www.mof.gov.il/customs/taarif.htm>

<sup>3</sup> *Customs Tariff and Exemption Ordinance for 2002*, edited according to H.S. - 2002, Kovetz Hatakanot No. 1295, 1 January 2002.

<sup>4</sup> The Ministry of Industry and Trade, The Customs Authority *Classification of Export Commodities Edited* according to H.S.- 1988, *Customs and Excise Dept.*, No. 511, 1 January 1988, updated for 1992.

<sup>5</sup> [http://europa.eu.int/comm/eurostat/ramon/nomenclatures/index.cfm?TargetUrl=LST\\_NOM](http://europa.eu.int/comm/eurostat/ramon/nomenclatures/index.cfm?TargetUrl=LST_NOM)

the C.C.C.N. – “Customs Cooperation Council Nomenclature”. In the special Supplement to Quarterly No. 4, 1988, details are presented on the new nomenclature, its aims, structure, and its principles of classification.

## 2. **S.I.T.C.**<sup>6</sup>

Import and export data are also classified according to the U.N<sup>7</sup>. Standard International Trade Classification, in which goods are classified in groups that are better suited for statistical presentation. This classification is obtained by a special sorting of details in the customs classification and their concentration in groups according to the structure of the classification. More details on the S.I.T.C. and its last version are presented in the Supplement to the Foreign Trade Quarterly No. 1, 1988.

## 3. **Classification by Economic Branches**

Export data is presented by branch of origin, meaning: the classification was done by the economic branch to which the product pertains by character. The division of the products into branches was done based on the description of the goods in the goods classification and not based on the exporter's branch. The definition of the branches is based on the classification of economic branches prepared by the Central Bureau of Statistics.

Starting with Quarterly No.1, 1995, data are published on export goods classified by new branch (origin)<sup>8</sup>. Until this Quarterly export goods were classified according to the "Standard Industrial Classification of All Economic Branches 1970" (Technical Publication No. 46).

Starting with Monthly No.8, 2003, data on export goods are published classified by new branch (origin)<sup>9</sup>.

Export data classified by new branch can be obtained from the Bureau's database starting 1988.

## 4. **Classification by Economic destination.**

This classification, according to which data on imports are presented, divides the items by three uses: consumer goods, raw materials for production and investment goods. Each use is sub-divided into secondary groups. In certain cases when a product is intended for more than one use, this product's import value is divided into the appropriate uses (e.g. passenger cars are both consumer goods and investment goods; sugar functions as consumer goods as well as a raw material).

In this classification the division of imports is into primary uses of the goods, i.e. the first use made of them: consumption, as raw materials - for production, or investment. Unprocessed and partly processed goods and components for assembling machinery and automobiles are classified as “raw materials”. Spare parts, tools and accessories for additional use are also included under “raw materials”. The classification by economic use is based on "Survey of Import Destination" which is conducted once in several years by the Central Bureau of Statistics.

The Classification of Import Commodities, by economic destination was updated in the No.3, 1993 Quarterly, as based on the Import Destinations Survey 1988. The results of that survey were published in Special Publication No. 952<sup>10</sup>. Until the said quarterly, commodities were classified according to the 1982/83 survey, and henceforward they are classified according to the 1988 survey. The results of that survey were published in Special Publication No. 787<sup>11</sup>.

## 5. **Countries**

- a. The country of import might be, “the country of purchase”, “the country of origin” or “the country of dispatch”. “The country of purchase” is defined as the country from which the invoice for the goods imported was sent; “the country of origin” is defined as the manufacturing country of the goods; “the country of dispatch” is defined as the country in which the goods were loaded on ship, airplane, or trucks. In some cases, "the country of purchase" is different from “the country of origin” and from “the country of dispatch”.

---

<sup>6</sup> United Nations, *Standard International Trade Classification, Revision III*, Statistical Papers, Series M, No. 34, New York 1986.

<sup>7</sup> <http://unstats.un.org/unsd/cr/registry/regcst.asp?Cl=14>

<sup>8</sup> Central Bureau of Statistics, *The Standard Classification of All Economic Activities 1993*, Technical Publication No.63, Jerusalem 1993.

<sup>9</sup> Central Bureau of Statistics, *The Standard Classification of All Economic Activities 1993*, Technical Publication No. 63, Second Edition, Jerusalem 2003.

<sup>10</sup> Central Bureau of Statistics, *Import Destination Survey 1988*, Special Series No. 952.

<sup>11</sup> Central Bureau of Statistics, *Import Destination Survey 1982/83*, Special Series No. 787.

- b. The country of export (destination) is defined as "the country of sale", i.e. the country of the purchaser. In fact the country of export is recorded as the country to which the invoice for the goods exported was sent. In certain cases "the country of export" is different from the country of consumption and the country of shipment.
- c. As from the agricultural export season of 1991/92 with the dissolution of the Board of Citrus Marketing and transfer of export to other companies, most shipments of this export arrive to Belgium, and are bought by various agents. As a result, there is no information on the country of the (final) destination of the commodity. Also the sale of flowers through the flower exchange is recorded as exports to Netherlands without no possibility to classify by country of final destination.
- d. Data on the import and export of commodities are published according to countries, blocs, regions and continents. The countries within the group are arranged alphabetically according to the Hebrew name of the country within the group.
- e. List of changes introduced to countries and blocs:
  - Through accession of the German Republic to the Federal Republic of Germany with effect from 3 October 1990, the two German States have united to form one sovereign state. As from that date all data shown referring to the Federal Republic of Germany are under the designation of "Germany".<sup>12</sup>
  - In 1991 the Union of Soviet Socialist Republic formally dissolved into 15 independent countries: Ukraine, Azerbaijan, Estonia, Armenia, Belarus, Georgia, Russian Federation, Latvia, Lithuania, Moldova Republic, Uzbekistan, Tajikistan, Turkmenistan, Kazakhstan, Kyrgyzstan. From June 1<sup>st</sup> 1992 onward data are shown for the individual countries.<sup>13</sup>
  - Beginning September 1<sup>st</sup> 1992 the former Yugoslavia data is referred to the new sovereign countries: Bosnia and Herzegovina, Croatia, Slovenia, the Federal Republic of Yugoslavia and Yugoslavia Republic of Macedonia.<sup>14</sup>
  - On June 4, 2003, the official name of the Federal Republic of Yugoslavia has been changed to Serbia and Montenegro.
  - As of January 1<sup>st</sup> 1994 Czech Republic data is referred separately to Czech Republic and Slovakia.
  - From May 2004, the following countries joined the European Union: Estonia, Hungary, Latvia, Lithuania, Malta, Slovenia, Slovakia, Poland, Czech Republic and Cyprus.<sup>15</sup>
  - From January 2007, the following countries joined the European Union: Romania and Bulgaria.<sup>16</sup>
  - Trade data concerning Luxemburg and Belgium are published separately for each country. Exceptionally, are two tables, in which until 1994 data of both countries were published jointly: (a) Table 13 – "Exports, Imports and Trade Balance, by Country, of Purchase and Destination"; (b) Table 14 – "Main Trading Countries, by Commodity Groups".

Also in table 12, "Exports to Main Trading Partners, by Commodity Groups", joint data was published for both countries. But since 4th quarter 1994 its publication stopped.

## The Value of Commodities

<sup>12</sup> Central Bureau of Statistics, 'Foreign Trade Statistics Quarterly' No. 1, 1991, Vol. 42

<sup>13</sup> Central Bureau of Statistics, 'Foreign Trade Statistics Quarterly' No. 2, 1992, Vol. 43

<sup>14</sup> Central Bureau of Statistics, 'Foreign Trade Statistics Quarterly' No. 4, 1992, Vol. 43

<sup>15</sup> Central Bureau of Statistics, 'Israel's Foreign Trade by Country - May 2004', Press Release 152/2004, June 17, 2004

<sup>16</sup> Central Bureau of Statistics, 'Israel's Foreign Trade by Country - January 2007', Press Release 025/2007, February 19, 2007



1. **The value of imports** is determined by the importers' report to Customs being based on the value of the transaction as defined in the Treaty of Brussels on the Evaluation of Goods for Customs Purposes (1950). The value of the transaction represents the value for which the goods were sold supplemented by expenditure on transportation and insurance as far as the border of the importing country, including costs of unloading at the exporting port. This definition of the value of the transaction in imports corresponds to the value of the goods according to C.I.F. (Cost, Insurance, Freight).

In most of the cases, the value for Customs purposes includes an imputation of local costs - wharfage and portage fees.

Import taxes and other taxes levied on imported goods are not included in the value for Customs purposes.

In the event of import of products unaccompanied by monetary recompense, where difficulty exists in determining the value of the transaction (as in the case of gifts), the value is determined by an estimate based on market price. So, for example, the cost of import of gifts for museums is based on the valuation of an insurance assessor.

If imported commodities are freed against a deposit, the import is recorded according to the date of release against the deposit until the final settlement of the account. The amendment of this import is recorded with final settlement, which is also dated according to the actual release of the goods (in other words an amendment of the value of the import may take place after several months).

2. **Import** data are recorded in the import entry forms in the currency of the transaction and are calculated in Israeli Shekels, according to the exchange rate on the date they are freed by customs and are converted into U.S. dollars too. The exchange rates for these purposes are the exchange rates for customs purposes on the date of the presentation of the entry forms. In the publications on Foreign Trade, the values of imports and exports are presented in U.S. dollars.

Since the floating of the Israeli Pound in October 1977, the rates of exchange between major foreign currencies and the Pound or the Shekel are determined for customs according to the rate dictated by the customs authorities on the basis of data provided by the Bank of Israel. To the extent that exchange rates fluctuate more than 2 percent in the daily rate of any currency, as fixed by the Bank of Israel, so the rates for customs purposes may be changed even in the middle of the week

December 1980 and September 1985 changes were introduced concerning Israeli currency: December 1980 the prevailing currency, the Lira, was changed to shekel. The exchange rate was 10 Lira was equivalent to 1 Shekel. September 1985 the Shekel was changed into New Shekel. The exchange rate was 1,000 Shekels were equivalent to 1 New Shekel.

3. **The Value** of exports data are recorded according to F.O.B. (free on board) transaction values before discounts and commissions are paid to foreign factors.
4. **Export** data are recorded in the export entry forms in Israeli Shekels and in the currency in which the transaction is made. The conversion into U.S. dollars is carried out in the monthly summaries, according to the rate on the day the transaction was registered at customs.

## Data Sources

The main sources for imports and exports data are the forms submitted to the customs authorities by importers and exporters (import and export entry forms).

## Seasonally Adjusted Data

Several data series are presented Seasonally Adjusted.

Beginning January, 2005 the data analysis is done by means of the improved computer program X12-ARIMA/2000, replacing X12-ARIMA/2000 used before. This analysis is based on moving averages, which calculates the seasonal factors-S for each month. These factors may change by use of supplemented or updated data.

The seasonally adjusted data are estimated using the X-12-ARIMA seasonal adjustment method that was developed by the US Census Bureau and by a procedure developed in the Central Bureau of Statistics



(CBS) for the simultaneous estimation of the moving festival dates and the number of trading days effects in Israel<sup>17</sup>.

The seasonally adjusted data are calculated by adjusting the original data for the influence of seasonality and festival and trading day effects. Trend data are estimated by removing the irregular influences (noise) from the seasonally adjusted data.

The seasonally adjusted data and the trend are subject to revisions as they are calculated anew, each month or quarter, on the basis of original data that include an additional observation (concurrent seasonal adjustment).

Starting 'Foreign Trade Quarterly' No. 1, 1995, 8 new export series and 5 additional import series are published. Monthly data for 1988 and onward can be obtained from the Bureau's database for each basic series and for series totals.

---

<sup>17</sup> A detailed and updated explanation on the seasonal adjustment procedure and trend estimation is given in the publication "Seasonal and prior adjustment factors for 2007, trends for 2003-2007"(internet only, at the C.B.S.: "Classification and methods, statistical methods, time series"): <http://www.cbs.gov.il/publications/tseries/seasonal08/presentationh08.pdf>

Table D 1. - Trade Countries -Imports and Exports

לוח ד 1. - ארצות הסחר - יבוא ויבוא

Million \$		מיליוני דולרים												מיליוני דולרים			
ממל	Code	Countries	ISO	יבוא						יבוא						ארצות	Code
				XII		2010	2009	2008	2007	XII		2010	2009	2008	2007		
				2010	2009					2010	2009						
		<b>Grand Total</b>		<b>5677.3</b>	<b>4769.7</b>	<b>59122.4</b>	<b>47368.2</b>	<b>65173.2</b>	<b>56623.0</b>	<b>5371.6</b>	<b>4971.1</b>	<b>58430.6</b>	<b>47935.5</b>	<b>61339.1</b>	<b>54092.0</b>		
		<b>Europe</b>		<b>2411.7</b>	<b>2407.0</b>	<b>26447.7</b>	<b>22857.0</b>	<b>29661.2</b>	<b>26832.3</b>	<b>1516.3</b>	<b>1606.5</b>	<b>18904.2</b>	<b>15373.1</b>	<b>21897.1</b>	<b>19192.8</b>	יבוא	סך כולל
		<b>European Union</b>		<b>1819.5</b>	<b>1821.0</b>	<b>20401.8</b>	<b>17491.7</b>	<b>22513.4</b>	<b>20687.0</b>	<b>1248.9</b>	<b>1278.5</b>	<b>15390.5</b>	<b>12389.8</b>	<b>17795.0</b>	<b>15992.8</b>	יבוא	האיחוד האירופי
105	I	Austria	AT	25.3	24.2	263.4	267.3	399.2	297.1	20.3	14.6	155.4	99.9	99.9	118.5	יבוא	אוסטריה
005	I	Italy	IT	210.4	212.9	2425.6	2126.0	2553.7	2302.1	79.0	90.0	1263.6	1103.0	1668.8	1284.4	יבוא	איטליה
007	I	Ireland	IE	62.3	45.4	519.5	473.1	415.1	368.1	7.7	5.3	81.0	92.4	99.9	118.9	יבוא	אירלנד
224	I	Estonia	EE	0.5	0.4	5.9	3.7	4.1	3.6	1.1	0.9	10.3	7.6	13.7	16.6	יבוא	אסטוניה
215	I	Bulgaria	BG	5.1	3.5	60.6	42.0	52.0	63.8	2.8	16.7	111.6	69.8	56.2	54.3	יבוא	בולגריה
010	I	Belgium	BE	357.3	281.1	3575.5	2567.8	4250.3	4454.9	228.6	217.9	3112.9	2371.8	4618.7	4070.8	יבוא	בלגיה
015	I	Germany	DE	310.2	380.5	3676.5	3361.8	3940.5	3484.3	178.8	152.7	1698.2	1440.3	1950.6	1913.0	יבוא	גרמניה
017	I	Denmark	DK	14.0	24.2	200.1	200.8	215.4	185.6	9.8	26.3	99.8	136.2	167.0	108.4	יבוא	דנמרק
020	I	Netherlands	NL	202.5	162.3	2101.9	1885.4	2465.3	2090.3	166.4	170.7	1824.2	1550.8	2035.0	1608.3	יבוא	הולנד
235	I	Hungary	HU	23.5	25.5	268.7	252.4	288.8	195.6	11.8	7.4	105.5	113.1	174.5	116.3	יבוא	הונגריה
023	I	United Kingdom	GB	191.2	189.7	2243.6	1907.2	2519.9	2681.4	124.9	137.7	2268.1	1423.5	1892.7	1938.1	יבוא	הממלכה המאוחדת
245	I	Greece	GR	19.0	23.5	199.3	200.7	221.4	284.5	27.3	24.8	214.4	295.3	301.0	280.9	יבוא	יוון
025	I	Luxembourg	LU	1.8	9.7	185.0	117.0	174.0	91.9	0.9	1.2	14.2	10.8	20.4	15.3	יבוא	לוקסמבורג
233	I	Latvia	LV	1.8	4.3	47.6	100.6	319.4	258.8	3.9	2.2	33.0	25.3	33.9	32.5	יבוא	לטביה
234	I	Lithuania	LT	1.9	0.8	22.1	13.7	24.5	21.8	4.8	2.9	30.8	19.8	42.4	28.2	יבוא	ליטא
255	I	Malta	MT	1.0	0.9	25.5	10.3	35.4	26.0	24.5	19.4	95.3	41.0	50.8	90.8	יבוא	מלטה
244	I	Slovenia	SI	10.0	24.5	196.0	122.4	65.4	97.1	15.2	32.1	149.3	124.4	125.2	100.3	יבוא	סלובניה
272	I	Slovakia	SK	7.3	6.4	82.4	60.9	49.4	17.2	3.0	8.4	19.2	23.4	28.5	18.5	יבוא	סלובקיה
260	I	Spain	ES	80.7	82.1	974.9	880.1	959.1	811.9	73.4	102.6	1039.4	940.5	1108.0	1106.0	יבוא	ספרד
265	I	Poland	PL	15.9	20.4	237.3	169.8	152.8	127.7	17.9	14.5	217.9	202.2	287.2	237.1	יבוא	פולין
125	I	Portugal	PT	7.0	15.1	95.0	100.1	114.2	126.2	7.2	9.0	103.3	111.3	98.9	90.9	יבוא	פורטוגל
130	I	Finland	FI	27.7	22.1	359.5	332.6	370.2	339.5	17.1	12.7	138.1	121.1	169.1	155.3	יבוא	פינלנד
271	I	Czech Republic	CZ	22.5	21.1	268.1	188.0	165.6	136.4	10.9	10.3	149.3	132.3	161.6	132.6	יבוא	צ'כיה
030	I	France	FR	142.2	152.8	1517.0	1428.7	1889.2	1480.9	127.2	117.0	1280.7	1110.6	1298.0	1313.2	יבוא	צרפת
378	I	Cyprus	CY	11.3	3.3	152.6	43.9	68.7	65.1	57.7	56.0	775.0	566.8	880.5	623.1	יבוא	קפריסין
275	I	Romania	RO	8.8	17.2	146.1	112.3	106.2	119.2	7.9	11.3	234.9	135.6	230.6	240.0	יבוא	רומניה
135	I	Sweden	SE	46.4	47.1	552.1	523.1	693.6	556.0	18.8	13.9	165.1	121.0	181.9	171.5	יבוא	שוודיה
		<b>European Free Trade Association (E.F.T.A.)</b>		<b>333.6</b>	<b>411.6</b>	<b>3298.6</b>	<b>3353.8</b>	<b>4043.7</b>	<b>2960.6</b>	<b>68.7</b>	<b>120.5</b>	<b>1113.9</b>	<b>1006.5</b>	<b>1289.5</b>	<b>1104.7</b>	יבוא	האגוד האירופית לסחר חופשי (אפט"א)
107	I	Iceland	IS	0.4	0.5	19.5	11.8	17.7	13.3	0.1	0.8	3.1	2.8	3.5	4.9	יבוא	איסלנד
120	I	Norway	NO	5.0	5.4	59.2	52.0	52.4	65.0	4.5	5.7	63.4	61.4	75.6	63.7	יבוא	נורבגיה
140	I	Switzerland	CH	328.2	405.7	3219.9	3290.0	3973.6	2882.3	64.1	114.0	1047.4	942.3	1210.4	1036.1	יבוא	שווייץ
		<b>Other European Countries</b>		<b>258.6</b>	<b>174.4</b>	<b>2747.3</b>	<b>2011.5</b>	<b>3104.1</b>	<b>3184.7</b>	<b>198.7</b>	<b>207.5</b>	<b>2399.8</b>	<b>1976.8</b>	<b>2812.6</b>	<b>2095.1</b>	יבוא	יתר ארצות אירופה
222	I	Ukraine	UA	11.8	9.6	138.9	103.9	201.5	154.8	6.0	8.7	110.1	88.1	195.1	161.9	יבוא	אוקראינה
241	I	Bosnia and Herzegovina	BA	0.0	0.0	0.2	0.3	1.5	2.1	0.6	0.1	1.9	2.1	4.2	1.6	יבוא	בוסניה
227	I	Belarus	BY	0.7	0.3	5.4	4.3	5.6	5.2	5.0	2.2	27.4	18.4	22.7	14.4	יבוא	בלרוס
230	I	Gibraltar	GL	0.0	0.8	0.5	3.4	2.7	1.1	0.0	0.1	12.6	2.3	35.2	25.3	יבוא	גיברלטר
324	I	Turkey	TR	163.6	121.4	1800.2	1387.7	1825.3	1606.9	101.9	112.0	1324.4	1086.0	1609.9	1195.8	יבוא	טורקיה
236	I	Moldova Republic	MD	0.1	0.2	1.6	1.9	2.2	1.1	0.6	0.4	5.3	8.0	25.8	10.3	יבוא	מולדובה
243	I	Macedonia	MK	0.1	0.0	0.6	1.0	0.8	0.4	0.5	0.5	12.9	12.1	20.8	5.9	יבוא	מקדוניה
242	I	Croatia	HR	0.4	0.4	7.0	15.3	5.9	3.1	1.6	0.9	21.0	25.2	23.2	27.8	יבוא	קרואטיה
229	I	Russian Federation	RU	81.6	41.2	785.2	488.6	1047.1	1398.8	79.4	78.5	812.4	656.1	777.0	611.5	יבוא	רוסיה
299	I	Other Countries		0.3	0.5	7.7	5.1	11.5	11.2	3.1	4.1	71.8	78.5	98.7	40.6	יבוא	יתר הארצות
		<b>Asia</b>		<b>1193.4</b>	<b>940.7</b>	<b>13316.5</b>	<b>10082.1</b>	<b>13712.8</b>	<b>11908.8</b>	<b>1285.4</b>	<b>981.0</b>	<b>13822.0</b>	<b>9520.5</b>	<b>12182.9</b>	<b>9771.3</b>	יבוא	אסיה
221	I	Uzbekistan	UZ	0.9	0.0	3.3	0.4	2.7	2.0	16.9	1.9	37.2	20.7	23.3	25.6	יבוא	אוזבקיסטן
223	I	Azerbaijan	AZ	0.0	0.0	0.2	0.3	0.3	0.2	17.8	33.9	107.5	264.3	129.4	82.6	יבוא	אזרבייג'ן
303	I	Indonesia	ID	11.7	7.6	106.1	90.7	293.4	89.3	1.7	1.6	12.8	12.5	15.8	17.6	יבוא	אינדונזיה
226	I	Armenia	AM	0.1	0.1	1.0	0.1	1.6	14.8	1.1	0.2	5.5	6.5	27.1	34.6	יבוא	ארמניה
228	I	Georgia	GE	0.1	0.3	1.6	1.9	2.0	2.3	2.7	2.4	43.5	35.0	132.0	54.1	יבוא	גרוזיה
315	I	India	IN	133.5	101.7	1845.5	1157.4	1648.8	1689.6	269.2	186.0	2901.6	1810.9	2361.3	1613.7	יבוא	הודו
318	I	Hong Kong	HK	141.5	114.8	1397.1	1111.5	1813.7	1747.5	313.6	241.7	3913.3	2874.2	4140.8	3118.4	יבוא	הונג קונג
321	I	Vietnam	VN	7.0	7.7	79.8	71.5	140.0	64.2	23.0	23.3	128.7	117.6	79.4	70.9	יבוא	וייטנאם
232	I	Turkmenistan	TM	0.0	0.1	0.0	0.6	0.2	0.8	0.1	1.1	19.8	3.9	1.7	2.2	יבוא	טורקמניסטן
363	I	Taiwan	TW	86.9	53.9	709.2	544.4	712.4	708.7	61.7	48.0	726.5	478.2	473.0	563.0	יבוא	טייוון
327	I	Japan	JP	173.6	128.7	1779.4	1523.7	2226.7	1882.1	61.7	49.2	655.8	527.6	883.0	769.6	יבוא	יפן
328	I	Jordan	JO	14.0	5.1	94.0	70.0	105.9	54.4	13.8	29.2	184.3	231.3	288.5	250.7	יבוא	ירדן
312	I	Myanmar	MM	0.0	0.0	0.7	0.2	0.6	0.8	0.0	0.2	2.4	4.6	1.3	1.3	יבוא	מיאנמר
336	I	Malaysia	MY	7.7	4.0	85.0	68.5	100.6	63.6	90.1	47.2	797.8	116.8	30.2	70.4	יבוא	מלזיה
345	I	China <sup>(1)</sup>	CN	394.9	328.3	4736.2	3521.1	4244.0	3476.9	232.6	132.3	2051.4	1044.6	1293.5	1040.6	יבוא	סין
350	I	Singapore	SG	62.0	59.8	702.8	534.0	552.5	558.4	35.6	34.7	528.5	477.4	536.8	416.3	יבוא	סינגפור
369	I	Sri Lanka	LK	2.7	2.6	30.1	25.7	47.9	37.6	5.9	4.5	54.7	42.2	72.8	60.7	יבוא	סרי לנקה
360	I	Philippines	PH	8.0	7.2	87.4	71.0	86.8	85.0	16.6	17.4	183.3	151.2	151.2	204.2		

Table D 1. - Trade Countries -Imports and Exports

לוח D 1. - ארצות הסחר - יבוא ויצוא

Million \$		מיליוני דולרים															
ממל	Code	Countries	ISO	יבוא						יצוא					ארצות	ממל	
				XII		2010	2009	2008	2007	XII		2010	2009	2008			2007
				2010	2009					2010	2009						
		<b>Grand Total</b>		<b>5677.3</b>	<b>4769.7</b>	<b>59122.4</b>	<b>47368.2</b>	<b>65173.2</b>	<b>56623.0</b>	<b>5371.6</b>	<b>4971.1</b>	<b>58430.6</b>	<b>47935.5</b>	<b>61339.1</b>	<b>54092.0</b>	<b>סך כולל</b>	
		<b>A f r i c a</b>		<b>54.7</b>	<b>53.4</b>	<b>566.6</b>	<b>566.4</b>	<b>733.6</b>	<b>336.3</b>	<b>79.2</b>	<b>103.3</b>	<b>1418.8</b>	<b>1085.8</b>	<b>1468.5</b>	<b>1202.0</b>	<b>יבוא אפריקה</b>	
401		Uganda	UG	0.7	0.5	7.8	8.1	7.2	7.6	0.9	0.4	7.7	13.1	11.6	11.1	יבוא זאנדה	401
410		Ethiopia	ET	3.0	3.3	46.1	35.8	46.2	26.3	1.0	1.2	19.7	12.4	18.4	12.1	יבוא אתיופיה	410
412		Botswana	BW	0.1	0.0	0.1	0.0	0.0	0.0	2.2	1.5	112.4	59.7	79.9	39.6	יבוא בוואננה	412
416		Gabon	GA	0.0	0.0	0.0	0.0	0.0	0.2	0.3	0.2	8.8	1.9	2.9	1.1	יבוא גבון	416
420		Ghana	GH	0.1	0.1	1.4	1.3	2.0	3.4	2.5	23.5	108.0	90.2	33.6	21.9	יבוא גנה	420
482		Dem. Rep. of the Congo	CD	0.0	0.0	0.0	0.0	0.0	0.0	0.0	0.0	0.5	0.1	0.2	0.4	יבוא דמו'ר.ר' של קונגו	482
428		South Africa	ZA	8.6	13.8	101.7	198.0	494.2	168.7	26.9	21.0	413.4	258.4	460.4	393.6	יבוא דרום אפריקה	428
496		Zimbabwe	ZW	0.0	0.0	0.1	0.0	0.0	0.5	0.8	0.1	7.1	1.5	2.0	2.5	יבוא זימבבווה	496
434		Zambia	ZM	0.0	0.2	2.5	0.6	1.6	0.8	0.4	0.0	2.7	1.8	1.6	1.8	יבוא זמביה	434
436		Cote d'Ivoire	CI	0.2	0.1	10.0	8.1	8.9	5.0	0.1	1.0	5.4	8.4	9.3	7.9	יבוא חוף השנהב	436
442		Tanzania	TZ	0.3	0.1	2.3	6.6	6.2	7.1	1.9	0.6	17.2	12.5	21.2	15.1	יבוא טנזניה	442
454		Mauritius	MU	0.4	0.0	0.8	0.2	0.8	1.6	0.3	0.7	5.3	4.8	11.1	10.0	יבוא מאוריציוס	454
462		Egypt	EG	38.9	32.2	355.1	270.9	132.4	94.3	11.0	12.0	147.3	134.5	139.0	153.6	יבוא מצרים	462
464		Morocco	MA	0.8	0.3	5.1	3.2	3.9	2.7	0.8	2.7	13.1	18.5	20.6	16.6	יבוא מרוקו	464
468		Nigeria	NG	0.1	0.2	1.7	2.4	1.4	0.2	10.4	25.8	303.0	210.2	304.3	205.1	יבוא ניג'ריה	468
429		Namibia	NA	0.0	0.0	0.2	0.2	0.5	1.0	0.2	0.9	6.3	3.0	22.0	77.2	יבוא נמיביה	429
474		Senegal	SN	0.2	0.1	2.5	1.1	0.7	0.6	0.3	0.2	3.3	3.7	8.8	7.1	יבוא סנגל	474
486		Congo	CG	0.2	0.0	0.7	0.0	0.4	0.7	0.7	1.3	19.5	20.5	12.2	11.0	יבוא קונגו	486
488		Cameroon	CM	0.0	0.0	0.2	0.1	0.5	0.2	0.5	0.8	12.8	24.3	18.2	8.9	יבוא קמרון	488
490		Kenya	KE	0.9	2.4	18.8	24.3	23.5	22.0	3.8	3.1	48.8	66.4	115.0	97.3	יבוא קניה	490
492		Reunion	RE	0.0	0.0	0.0	0.0	0.0	0.0	0.3	0.2	2.7	1.5	1.3	0.8	יבוא ראוניון	492
494		Rwanda	RW	0.0	0.0	0.1	0.0	0.6	0.2	2.1	0.1	8.5	4.8	19.7	5.9	יבוא רואנדה	494
499		Other Countries		0.2	0.1	9.4	5.5	2.6	3.2	11.8	6.0	145.3	133.6	155.2	101.4	יבוא יתר הארצות	499
		<b>A m e r i c a</b>		<b>819.5</b>	<b>662.9</b>	<b>7943.3</b>	<b>6819.7</b>	<b>9745.7</b>	<b>9504.2</b>	<b>2099.1</b>	<b>1941.8</b>	<b>21622.3</b>	<b>19069.5</b>	<b>23177.1</b>	<b>21267.0</b>	<b>יבוא אמריקה הצפונית</b>	
		<b>North America</b>		<b>747.4</b>	<b>628.2</b>	<b>7275.5</b>	<b>6261.3</b>	<b>8659.6</b>	<b>8340.5</b>	<b>1900.2</b>	<b>1724.4</b>	<b>19572.8</b>	<b>17624.1</b>	<b>21203.5</b>	<b>19910.9</b>	<b>יבוא אמריקה הצפונית</b>	
505		USA	US	706.5	587.6	6698.2	5849.1	8034.4	7848.9	1793.8	1629.3	18530.7	16774.1	19972.5	18906.8	יבוא ארצות הברית	505
723		Mexico	MX	10.5	14.8	178.5	117.8	115.8	57.9	23.8	33.3	304.2	271.7	329.3	289.8	יבוא מקסיקו	723
510		Canada	CA	30.4	25.8	398.8	294.4	509.4	433.7	82.6	61.8	737.9	578.3	901.7	714.3	יבוא קנדה	510
		<b>Central America</b>		<b>4.9</b>	<b>3.8</b>	<b>47.1</b>	<b>34.6</b>	<b>48.6</b>	<b>34.4</b>	<b>44.5</b>	<b>80.1</b>	<b>567.2</b>	<b>299.1</b>	<b>221.1</b>	<b>181.6</b>	<b>יבוא אמריקה המרכזית</b>	
611		El Salvador	SV	0.0	0.1	0.2	0.2	0.3	0.5	0.2	0.4	7.0	2.0	12.7	8.3	יבוא אל-סלבדור	611
631		Bahamas	BS	0.0	0.0	0.1	0.0	0.0	0.2	0.0	0.1	0.5	0.2	0.4	0.5	יבוא בהאמה, א"י	631
621		Barbados	BB	0.0	0.0	0.0	0.0	0.0	0.0	0.0	0.1	0.6	1.1	1.7	3.6	יבוא ברבדוס	621
625		Jamaica	JM	0.0	0.0	0.0	0.0	0.0	0.1	0.5	0.3	6.0	3.7	14.4	12.6	יבוא ג'מייקה	625
613		Guatemala	GT	0.1	0.2	2.1	4.8	2.7	3.4	2.5	2.7	27.5	23.3	31.3	26.5	יבוא גואטמלה	613
636		Haiti	HT	0.0	0.0	0.0	0.0	0.0	0.0	0.2	0.2	3.3	2.1	3.7	5.9	יבוא האיטי	636
615		Honduras	HN	0.0	0.0	0.7	0.9	0.7	0.5	0.8	0.6	8.6	12.1	29.8	12.4	יבוא הונדורס	615
627		Trinidad and Tabago	TT	0.0	0.0	0.0	0.0	0.0	0.0	2.0	0.6	7.4	5.1	2.4	3.8	יבוא טרינידד וטובגו	627
650		Martinique	MQ	0.0	0.0	0.0	0.0	0.0	0.0	0.1	0.2	1.6	2.1	1.9	1.1	יבוא מרטיניק	650
617		Nicaragua	NI	0.0	0.0	0.3	0.2	0.0	0.0	0.2	0.1	3.3	3.9	5.3	4.8	יבוא ניקרגואה	617
641		Panama	PA	0.6	1.8	20.4	14.3	32.6	9.8	0.8	3.8	17.9	18.9	17.0	18.1	יבוא פנמה	641
619		Costa Rica	CR	0.4	0.5	3.7	3.5	2.0	2.4	24.0	68.5	419.1	170.0	43.0	35.3	יבוא קוסטה ריקה	619
639		Dominican Republic	DO	0.1	0.1	1.6	0.8	1.0	0.9	2.2	1.3	19.1	17.1	22.1	23.5	יבוא רפובליקה דומיניקנית	639
649		Other Countries		3.7	1.1	18.0	9.9	9.3	16.6	11.0	1.2	45.3	37.5	35.4	25.2	יבוא יתר הארצות	649
		<b>South America</b>		<b>67.2</b>	<b>30.9</b>	<b>620.7</b>	<b>523.8</b>	<b>1037.5</b>	<b>1129.3</b>	<b>154.4</b>	<b>137.3</b>	<b>1482.3</b>	<b>1146.3</b>	<b>1752.5</b>	<b>1174.5</b>	<b>יבוא אמריקה הדרומית</b>	
711		Uruguay	UY	7.2	4.8	55.6	50.0	80.3	68.6	1.0	1.5	9.6	9.6	19.3	8.3	יבוא אורוגוואי	711
713		Ecuador	EC	0.6	0.2	4.1	3.5	4.5	3.5	3.6	3.3	42.5	25.2	41.3	31.7	יבוא אקוודור	713
715		Argentina	AR	9.0	7.5	174.2	147.0	150.3	154.5	8.3	6.9	130.3	75.9	125.2	126.2	יבוא ארגנטינה	715
717		Bolivia	BO	0.2	0.4	2.9	2.8	2.1	1.6	0.2	1.4	5.8	7.3	6.4	4.9	יבוא בוליביה	717
719		Brazil	BR	30.6	12.0	258.9	207.8	297.2	270.7	67.1	80.3	935.2	716.5	1172.0	671.6	יבוא ברזיל	719
721		Venezuela	VE	0.2	0.0	0.2	0.4	0.7	4.7	1.3	2.8	22.4	18.9	35.0	48.8	יבוא ונצואלה	721
725		Paraguay	PY	11.6	0.9	56.9	22.6	20.1	22.7	1.1	0.2	3.1	5.0	18.2	10.1	יבוא פרגוואי	725
727		Peru	PE	1.4	0.7	9.4	4.1	4.6	3.3	51.9	12.4	114.4	49.2	46.8	40.1	יבוא פרו	727
731		Chile	CL	5.5	3.1	50.1	31.7	32.5	14.9	6.4	7.8	85.5	68.3	119.9	78.2	יבוא צ'ילה	731
733		Colombia	CO	0.9	1.3	8.4	53.9	445.2	584.8	11.8	20.5	127.1	170.0	166.7	152.6	יבוא קולומביה	733
799		Other Countries		0.0	0.0	0.0	0.0	0.0	0.0	1.7	0.2	6.4	0.4	1.7	2.0	יבוא יתר הארצות	799
		<b>O c e a n i a</b>		<b>13.3</b>	<b>6.8</b>	<b>144.0</b>	<b>192.3</b>	<b>262.5</b>	<b>150.5</b>	<b>67.4</b>	<b>59.3</b>	<b>576.1</b>	<b>497.2</b>	<b>786.6</b>	<b>567.3</b>	<b>יבוא אוקיאניה</b>	
805		Australia	AU	10.7	6.3	127.4	178.7	240.4	139.3	63.5	53.7	531.7	432.7	711.3	520.2	יבוא אוסטרליה	805
810		New Zealand	NZ	2.6	0.5	16.1	12.9	21.8	10.8	3.3	3.8	39.7	59.5	67.8	43.6	יבוא ניו זילנד	810
806		Papua New Guinea	PG	0.0	0.0	0.0	0.0	0.0	0.0	0.1	1.5	0.4	2.0	0.6	1.6	יבוא פפואה גינאה החדשה	806
807		Fiji	FJ	0.0	0.0	0.5	0.7	0.3	0.0	0.5	0.3	3.4	2.1	3.1	0.1	יבוא פיג'י	807
899		Other Countries		0.0	0.0	0.0	0.0	0.0	0.4	0.0	0.0	0.9	0.9	3.8	1.8	יבוא יתר הארצות	899
		<b>Unclassified Countries</b>		<b>1184.7</b>	<b>698.9</b>	<b>10704.3</b>	<b>6850.7</b>	<b>11057.4</b>	<b>7890.9</b>	<b>324.2</b>	<b>279.2</b>	<b>2087.2</b>	<b>2389.4</b>	<b>1826.9</b>	<b>2091.8</b>	<b>מסוגלות יבוא</b>	<b>900</b>

(1) Since July 1997 the data on trade with Hong-Kong should be added to the data on China.

(1) החל בחודש יולי 1997 יש לצרף לתכונים על סין את נתוני הסחר עם הונג קונג.

Table D 2. - Trade Countries -Imports and Exports, excl. Diamonds

לוח ד 2 - ארצות הסחר - יבוא ויצוא, ללא יהלומים

Million \$		מיליון דולרים											ארצות	סמל		
ממל	Countries	ISO	יבוא					יצוא								
			XII		2010	2009	2008	2007	XII		2010	2009			2008	2007
Code			2010	2009	2010	2009	2008	2007	2010	2009	2010	2009	2008	2007		Code
	<b>Grand Total</b>		<b>4797.7</b>	<b>4061.2</b>	<b>50732.1</b>	<b>42050.1</b>	<b>55808.5</b>	<b>46587.0</b>	<b>4005.7</b>	<b>3919.0</b>	<b>42032.4</b>	<b>36336.6</b>	<b>41941.3</b>	<b>35673.4</b>	<b>סך כולל</b>	
	<b>Europe</b>		<b>1952.5</b>	<b>1994.0</b>	<b>22036.2</b>	<b>19900.9</b>	<b>24371.0</b>	<b>20883.0</b>	<b>1267.1</b>	<b>1349.8</b>	<b>15218.4</b>	<b>12555.5</b>	<b>16777.7</b>	<b>14574.9</b>	<b>אירופה</b>	
	<b>European Union</b>		<b>1536.5</b>	<b>1612.1</b>	<b>17613.6</b>	<b>15628.4</b>	<b>18843.3</b>	<b>16550.3</b>	<b>1048.5</b>	<b>1125.5</b>	<b>12653.4</b>	<b>10489.6</b>	<b>13801.9</b>	<b>12297.4</b>	<b>האיחוד האירופי</b>	
105	Austria	AT	25.3	24.1	262.2	266.3	397.0	296.6	20.0	14.4	151.9	96.7	95.4	115.6	אוסטריה	105
005	Italy	IT	209.9	212.9	2422.1	2118.7	2534.6	2295.0	72.6	87.8	1211.5	1044.9	1597.4	1203.0	איטליה	005
007	Ireland	IE	62.3	45.4	519.5	473.1	415.1	368.1	7.7	5.3	81.0	92.4	99.9	118.9	אירלנד	007
224	Estonia	EE	0.5	0.4	5.9	3.7	4.1	3.6	1.1	0.9	10.3	7.6	13.7	16.6	אסטוניה	224
215	Bulgaria	BG	5.1	3.5	60.5	42.0	49.3	57.2	2.8	16.7	111.5	69.7	54.1	49.7	בלגריה	215
010	Belgium	BE	117.5	108.0	1337.1	1166.2	1371.1	1272.0	70.0	89.9	857.5	811.3	1201.6	996.4	בלגיה	010
015	Germany	DE	308.5	379.8	3671.7	3359.5	3938.9	3481.7	175.1	149.5	1655.9	1399.5	1901.7	1862.6	גרמניה	015
017	Denmark	DK	13.8	24.2	199.7	200.8	215.1	185.6	9.8	26.3	97.8	132.8	164.5	107.3	דנמרק	017
020	Netherlands	NL	202.5	182.3	2101.9	1885.4	2465.3	2090.3	165.3	170.5	1818.3	1550.3	2031.0	1606.3	הולנד	020
235	Hungary	HU	23.3	25.5	288.5	251.9	288.7	195.6	11.7	7.4	105.4	112.9	174.0	116.2	הונגריה	235
023	United Kingdom	GB	150.8	156.2	1705.6	1459.7	1765.7	1758.4	103.9	126.3	2015.2	1265.2	1619.8	1624.0	הממלכה המאוחדת	023
245	Greece	GR	19.0	23.5	199.3	200.7	221.2	284.5	27.3	24.5	213.6	292.6	294.3	284.7	יוון	245
025	Luxembourg	LU	13.7	9.7	185.0	117.0	174.0	91.9	0.9	1.2	14.2	10.8	20.4	15.3	לוקסמבורג	025
233	Latvia	LV	1.8	4.3	47.6	100.6	319.4	258.8	3.9	2.2	33.0	25.3	33.9	32.5	לטביה	233
234	Lithuania	LT	1.9	0.8	22.1	13.7	24.5	21.8	4.8	2.9	30.8	19.8	42.4	26.2	ליטא	234
255	Malta	MT	1.0	0.9	25.5	10.3	35.4	26.0	24.5	19.4	95.3	41.0	50.8	90.8	מלטה	255
244	Slovenia	SI	10.0	24.5	196.0	122.4	65.4	97.1	15.2	32.1	149.3	124.4	125.2	100.3	סלובניה	244
272	Slovakia	SK	7.3	6.4	82.4	60.9	49.4	17.2	3.0	8.4	19.2	23.4	28.5	18.5	סלובקיה	272
260	Spain	ES	80.6	81.5	974.7	879.3	958.9	811.9	72.7	101.8	1031.3	933.7	1092.4	1079.2	ספרד	260
265	Poland	PL	15.9	20.4	237.3	169.8	152.8	127.7	17.9	14.5	217.5	201.5	284.9	236.6	פולין	265
125	Portugal	PT	7.0	15.1	94.9	100.1	114.2	126.2	7.2	9.0	103.0	111.3	98.9	90.9	פורטוגל	125
130	Finland	FI	27.7	22.1	359.5	332.6	370.2	339.5	17.0	12.6	136.8	119.8	167.8	154.1	פינלנד	130
271	Czech Republic	CZ	22.5	21.1	268.1	188.0	165.6	136.3	10.7	10.2	148.1	131.0	158.9	132.1	צ'כיה	271
030	France	FR	142.1	151.9	1515.7	1426.8	1882.0	1479.7	119.6	110.8	1178.6	1052.1	1162.6	1202.3	צרפת	030
378	Cyprus	CY	11.3	3.3	152.6	43.5	68.0	65.1	57.3	55.9	768.6	564.1	879.5	621.3	קפריסין	378
275	Romania	RO	8.8	17.2	146.1	112.3	103.8	108.4	7.8	11.3	234.8	135.6	228.6	226.6	רומניה	275
135	Sweden	SE	46.4	47.1	552.1	523.1	693.6	554.1	18.7	13.7	163.0	119.9	179.7	169.4	שוודיה	135
	<b>European Free Trade Association (E.F.T.A.)</b>		<b>211.8</b>	<b>233.9</b>	<b>2254.0</b>	<b>2567.5</b>	<b>2903.6</b>	<b>2131.8</b>	<b>22.5</b>	<b>20.8</b>	<b>211.4</b>	<b>206.6</b>	<b>248.8</b>	<b>235.9</b>	<b>האיגוד האירופי לסחר חופשי (אפט"א)</b>	
107	Iceland	IS	0.4	0.5	19.5	11.8	17.7	13.3	0.1	0.2	3.1	2.2	3.5	4.9	איסלנד	107
120	Norway	NO	5.0	5.4	59.2	52.0	52.4	65.0	4.3	5.3	57.9	59.0	73.7	61.4	נורבגיה	120
140	Switzerland	CH	206.4	228.0	2175.3	2503.7	2833.5	2053.5	18.1	15.3	150.4	145.4	171.6	169.6	שווייץ	140
	<b>Other European Countries</b>		<b>204.2</b>	<b>148.0</b>	<b>2168.6</b>	<b>1705.0</b>	<b>2624.1</b>	<b>2200.9</b>	<b>196.1</b>	<b>203.5</b>	<b>2353.6</b>	<b>1859.3</b>	<b>2727.0</b>	<b>2041.6</b>	<b>יתר ארצות אירופה</b>	
222	Ukraine	UA	11.8	9.6	138.7	102.6	198.0	151.9	5.9	8.1	106.8	76.3	182.1	146.4	אוקראינה	222
241	Bosnia and Herzegovina	BA	0.0	0.0	0.2	0.3	1.5	2.1	0.6	0.1	1.9	2.1	4.2	1.6	בוסניה	241
227	Belarus	BY	0.1	0.3	2.5	3.9	5.6	5.2	5.0	2.2	27.4	18.4	22.7	14.4	בלרוס	227
230	Gibraltar	GL	0.0	0.8	0.5	3.4	2.7	1.1	0.0	0.1	12.6	2.3	35.2	25.3	גיברלטר	230
324	Turkey	TR	162.8	121.4	1798.9	1387.2	1823.2	1605.2	100.9	110.5	1309.1	1070.7	1586.4	1167.8	טורקיה	324
236	Moldova Republic	MD	0.1	0.2	1.6	1.9	2.2	1.1	0.6	0.4	5.3	8.0	25.8	10.3	מולדובה	236
243	Macedonia	MK	0.1	0.0	0.6	1.0	0.8	0.4	0.5	0.5	12.9	12.1	20.8	5.9	מקדוניה	243
242	Croatia	HR	0.4	0.4	7.0	15.3	5.9	3.1	1.6	0.9	21.0	25.2	23.2	27.8	קרואטיה	242
229	Russian Federation	RU	28.6	14.8	210.9	184.3	572.7	419.6	77.9	76.6	784.8	565.7	727.9	601.5	רוסיה	229
299	Other Countries		0.3	0.5	7.7	5.1	11.5	11.2	3.1	4.1	71.8	78.5	98.7	40.6	יתר הארצות	299
	<b>Asia</b>		<b>1016.1</b>	<b>816.9</b>	<b>11368.1</b>	<b>8885.0</b>	<b>11612.6</b>	<b>9653.8</b>	<b>811.3</b>	<b>652.7</b>	<b>8379.8</b>	<b>5938.8</b>	<b>6739.5</b>	<b>5335.3</b>	<b>אסיה</b>	
221	Uzbekistan	UZ	0.9	0.0	3.3	0.4	2.7	2.0	16.9	1.9	37.2	20.7	23.1	25.6	אוזבקיסטן	221
223	Azerbaijan	AZ	0.0	0.0	0.2	0.3	0.3	0.2	17.8	33.9	107.5	264.3	128.3	82.6	אזרבייג'ן	223
303	Indonesia	ID	11.7	7.6	106.1	90.7	293.4	89.3	1.7	1.6	12.8	12.5	15.8	17.6	אינדונזיה	303
226	Armenia	AM	0.1	0.1	0.8	0.1	0.4	0.6	0.3	0.1	2.8	6.1	9.6	4.3	ארמניה	226
228	Georgia	GE	0.1	0.3	1.6	1.9	2.0	2.3	2.7	2.4	43.5	35.0	132.0	54.1	גרוזיה	228
315	India	IN	54.4	44.9	713.5	518.2	673.6	558.5	135.7	116.2	1690.6	1198.5	1377.9	725.1	הודו	315
318	Hong Kong	HK	64.3	58.9	769.7	660.9	881.6	809.2	42.1	33.7	457.9	365.4	409.4	356.4	הונג קונג	318
321	Vietnam	VN	7.0	7.7	79.8	71.5	140.0	64.2	23.0	23.3	128.7	117.6	79.4	70.9	וייטנאם	321
232	Turkmenistan	TM	0.0	0.1	0.0	0.6	0.2	0.8	0.1	1.1	19.8	3.9	1.7	2.2	טורקמניסטן	232
363	Taiwan	TW	86.9	53.9	707.8	541.9	709.7	708.3	58.8	44.6	699.8	456.8	450.7	537.7	טייוון	363
327	Japan	JP	172.2	128.0	1762.5	1513.9	2210.2	1871.8	56.4	46.7	605.9	472.7	796.3	669.9	יפן	327
328	Jordan	JO	14.0	5.1	94.0	70.0	105.9	54.4	13.4	28.9	182.9	229.1	283.1	249.9	ירדן	328
312	Mayanmar	MM	0.0	0.0	0.7	0.2	0.6	0.8	0.0	0.2	2.4	4.6	1.3	1.3	מיאנמר	312
336	Malaysia	MY	7.7	4.0	85.0	68.5	100.6	63.6	90.1	47.2	797.8	116.8	30.2	70.4	מלזיה	336
345	China	CN	393.5	327.0	4712.4	3484.2	4235.3	3472.8	196.0	108.4	1738.4	878.9	1100.9	869.5	סין	345
350	Singapore	SG	61.9	59.7	695.5	527.3	540.7	550.2	30.3	30.9	443.3	434.7	472.3	370.2	סינגפור	350
369	Sri Lanka	LK	0.5	0.7	7.2	5.7	7.9	10.3	2.8	1.3	24.1	18.1	24.8	24.8	סרי לנקה	369
360	Philippines	PH	8.0	7.2	87.4	71.0	86.7	85.0	16.6	17.4	183.3	151.1	151.0	204.2	פיליפינים	360
372	South Korea	KR	95.9	75.0	1101.0	871.1	1102.9	945.1	71.8	77.4	844.7	833.7	809.3	730.0	קוריאה הדרומית	372
237	Kazakhstan	KZ	0.1	0.0	0.3	0.9	3.4	3.3	9.0	6.8	62.4	57.0	158.6	99.6	קזחסטן	237

Table D 2. - Trade Countries -Imports and Exports, excl. Diamonds

לוח ד 2 - ארצות הסחר - יבוא ויבוא, ללא יהלומים

מיליון דולרים		מיליון \$											מל				
מל	Code	Countries	ISO	יבוא					יבוא					ארצות	מל		
				XII		2010	2009	2008	2007	XII		2010	2009			2008	2007
				2010	2009					2010	2009						
		<b>Grand Total</b>		<b>4797.7</b>	<b>4061.2</b>	<b>50732.1</b>	<b>42050.1</b>	<b>55808.5</b>	<b>46587.0</b>	<b>4005.7</b>	<b>3919.0</b>	<b>42032.4</b>	<b>36336.6</b>	<b>41941.3</b>	<b>35673.4</b>	<b>סך כולל</b>	
		<b>Africa</b>		<b>54.7</b>	<b>53.4</b>	<b>566.6</b>	<b>566.4</b>	<b>733.6</b>	<b>336.3</b>	<b>71.8</b>	<b>101.7</b>	<b>1260.1</b>	<b>1031.2</b>	<b>1343.3</b>	<b>1081.8</b>	<b>אפריקה</b>	
401		Uganda	UG	0.7	0.5	7.8	8.1	7.2	7.6	0.9	0.4	7.7	13.1	11.6	11.1	אוגנדה	401
410		Ethiopia	ET	3.0	3.3	46.1	35.8	46.2	26.3	1.0	1.2	19.7	12.4	18.4	12.1	אתיופיה	410
412		Botswana	BW	0.1	0.0	0.1	0.0	0.0	0.0	2.2	1.5	112.4	59.7	79.9	39.6	בוטסואנה	412
416		Gabon	GA	0.0	0.0	0.0	0.0	0.0	0.2	0.3	0.2	8.8	1.9	2.9	1.1	גבון	416
420		Ghana	GH	0.1	0.1	1.4	1.3	2.0	3.4	2.5	23.5	108.0	90.2	33.6	21.9	גנה	420
482		Dem. Rep. of the Congo	CD	0.0	0.0	0.0	0.0	0.0	0.0	0.0	0.0	0.5	0.1	0.2	0.4	דמו.רפ' של קונגו	482
428		South Africa	ZA	8.6	13.8	101.7	198.0	494.2	158.7	19.5	19.7	255.9	204.8	336.4	274.8	דרום אפריקה	428
496		Zimbabwe	ZW	0.0	0.0	0.1	0.0	0.0	0.5	0.8	0.1	7.1	1.5	2.0	2.5	זימבבואה	496
434		Zambia	ZM	0.0	0.2	2.5	0.6	1.6	0.8	0.4	0.0	2.7	1.8	1.6	1.8	זמבייה	434
436		Cote d'Ivoire	CI	0.2	0.1	10.0	8.1	8.9	5.0	0.1	1.0	5.4	8.4	9.3	7.9	חוף השנהב	436
442		Tanzania	TZ	0.3	0.1	2.3	6.6	6.2	7.1	1.9	0.6	17.2	12.5	21.2	15.1	טנזניה	442
454		Mauritius	MU	0.4	0.0	0.8	0.2	0.8	1.6	0.3	0.4	4.1	3.8	9.9	8.6	מאוריטיוס	454
462		Egypt	EG	38.9	32.2	355.1	270.9	132.4	94.3	11.0	12.0	147.3	134.5	139.0	153.6	מצרים	462
464		Morocco	MA	0.8	0.3	5.1	3.2	3.9	2.7	0.8	2.7	13.1	18.5	20.6	16.6	מרוקו	464
468		Nigeria	NG	0.1	0.2	1.7	2.4	1.4	0.2	10.4	25.8	303.0	210.2	304.3	205.1	ניגריה	468
429		Namibia	NA	0.0	0.0	0.2	0.2	0.5	1.0	0.2	0.9	6.3	3.0	22.0	77.2	נמיביה	429
474		Senegal	SN	0.2	0.1	2.5	1.1	0.7	0.6	0.3	0.2	3.3	3.7	8.8	7.1	סנגל	474
486		Congo	CG	0.2	0.0	0.7	0.0	0.4	0.7	0.7	1.3	19.5	20.5	12.2	11.0	קונגו	486
488		Cameroon	CM	0.0	0.0	0.2	0.1	0.5	0.2	0.5	0.8	12.8	24.3	18.2	8.9	קמרון	488
490		Kenya	KE	0.9	2.4	18.8	24.3	23.5	22.0	3.8	3.1	48.8	66.4	115.0	97.3	קניה	490
492		Reunion	RE	0.0	0.0	0.0	0.0	0.0	0.0	0.3	0.2	2.7	1.5	1.3	0.8	ראוניון	492
494		Rwanda	RW	0.0	0.0	0.1	0.0	0.6	0.2	2.1	0.1	8.5	4.8	19.7	5.9	רואנדה	494
499		Other Countries		0.2	0.1	9.4	5.5	2.6	3.2	11.8	6.0	145.3	133.6	155.2	101.4	יתר הארצות	499
		<b>America</b>		<b>704.8</b>	<b>587.3</b>	<b>7098.2</b>	<b>6316.6</b>	<b>8760.9</b>	<b>8564.2</b>	<b>1472.0</b>	<b>1483.9</b>	<b>14694.0</b>	<b>14074.0</b>	<b>14708.4</b>	<b>12233.2</b>	<b>אמריקה הצפונית</b>	
		<b>North America</b>		<b>632.7</b>	<b>553.4</b>	<b>6431.8</b>	<b>5761.8</b>	<b>7679.2</b>	<b>7412.3</b>	<b>1274.5</b>	<b>1270.3</b>	<b>12654.7</b>	<b>12638.4</b>	<b>12741.2</b>	<b>10883.8</b>	<b>אמריקה הצפונית</b>	
505		USA	US	597.5	512.8	5924.1	5352.1	7067.3	6921.9	1172.3	1177.5	11683.2	11846.4	11601.2	9967.7	ארצות הברית	505
723		Mexico	MX	10.5	14.8	178.5	117.8	115.8	57.9	23.8	33.3	304.2	268.7	329.2	289.7	מקסיקו	723
510		Canada	CA	24.7	25.8	329.2	291.9	496.1	432.5	78.4	59.5	667.3	523.3	810.8	626.4	קנדה	510
		<b>Central America</b>		<b>4.9</b>	<b>3.0</b>	<b>46.6</b>	<b>31.3</b>	<b>47.1</b>	<b>33.5</b>	<b>44.4</b>	<b>77.1</b>	<b>563.0</b>	<b>293.5</b>	<b>219.7</b>	<b>181.0</b>	<b>אמריקה המרכזית</b>	
611		El Salvador	SV	0.0	0.1	0.2	0.2	0.3	0.5	0.2	0.4	7.0	2.0	12.7	8.3	אל סלבדור	611
631		Bahamas	BS	0.0	0.0	0.1	0.0	0.0	0.2	0.0	0.1	0.5	0.2	0.4	0.5	בהאמה, אי	631
621		Barbados	BB	0.0	0.0	0.0	0.0	0.0	0.0	0.0	0.1	0.6	1.1	1.7	3.6	ברבדוס	621
625		Jamaica	JM	0.0	0.0	0.0	0.0	0.0	0.1	0.5	0.3	6.0	3.7	14.4	12.6	ג'מייקה	625
613		Guatemala	GT	0.1	0.2	2.1	4.8	2.7	3.4	2.5	2.7	27.5	23.3	31.3	26.5	גואטמלה	613
636		Haiti	HT	0.0	0.0	0.0	0.0	0.0	0.0	0.2	0.2	3.3	2.1	3.7	5.9	האיטי	636
615		Honduras	HN	0.0	0.0	0.7	0.9	0.7	0.5	0.8	0.6	8.6	12.1	29.8	12.4	הונדורס	615
627		Trinidad and Tabago	TT	0.0	0.0	0.0	0.0	0.0	0.0	2.0	0.6	7.4	5.1	2.4	3.8	טרינידד וטובגו	627
650		Martinique	MQ	0.0	0.0	0.0	0.0	0.0	0.0	0.1	0.2	1.6	2.1	1.9	1.1	מרטניק	650
617		Nicaragua	NI	0.0	0.0	0.3	0.2	0.0	0.0	0.2	0.1	3.3	3.9	5.3	4.8	ניקרגואה	617
641		Panama	PA	0.6	1.0	19.9	11.0	31.1	8.9	0.7	0.8	13.7	13.3	15.6	17.5	פנמה	641
619		Costa Rica	CR	0.4	0.5	3.7	3.5	2.0	2.4	24.0	68.5	419.1	170.0	43.0	35.3	קוסטה ריקה	619
639		Dominican Republic	DO	0.1	0.1	1.6	0.8	1.0	0.9	2.2	1.3	19.1	17.1	22.1	23.5	רפובליקה דומיניקנית	639
649		Other Countries		3.7	1.1	18.0	9.9	9.3	16.6	11.0	1.2	45.3	37.5	35.4	25.2	יתר הארצות	649
		<b>South America</b>		<b>67.2</b>	<b>30.9</b>	<b>619.8</b>	<b>523.5</b>	<b>1034.6</b>	<b>1118.4</b>	<b>153.1</b>	<b>136.5</b>	<b>1476.3</b>	<b>1142.1</b>	<b>1747.5</b>	<b>1168.4</b>	<b>אמריקה הדרומית</b>	
711		Uruguay	UY	7.2	4.8	55.6	50.0	80.3	68.6	1.0	1.5	9.6	9.6	19.3	8.3	אורוגוואי	711
713		Ecuador	EC	0.6	0.2	4.1	3.5	4.5	3.5	3.6	3.3	42.5	25.2	41.3	31.7	אקוודור	713
715		Argentina	AR	9.0	7.5	174.2	146.9	150.3	154.5	8.3	6.9	130.2	75.9	124.9	126.1	ארגנטינה	715
717		Bolivia	BO	0.2	0.4	2.9	2.8	2.1	1.6	0.2	1.4	5.8	7.3	6.4	4.9	בוליביה	717
719		Brazil	BR	30.6	12.0	258.0	207.6	294.3	263.4	65.8	79.6	930.0	713.3	1168.1	666.2	ברזיל	719
721		Venezuela	VE	0.2	0.0	0.2	0.4	0.7	1.1	1.3	2.8	22.3	18.7	34.5	47.9	ונצואלה	721
725		Paraguay	PY	11.6	0.9	56.9	22.6	20.1	22.7	1.1	0.2	3.1	5.0	18.2	10.8	פרגוואי	725
727		Peru	PE	1.4	0.7	9.4	4.1	4.6	3.3	51.9	12.4	114.4	49.2	46.8	40.1	פרו	727
731		Chile	CL	5.5	3.1	50.1	31.7	32.5	14.9	6.4	7.7	84.9	67.5	119.6	77.8	צ'ילה	731
733		Colombia	CO	0.9	1.3	8.4	53.9	445.2	584.8	11.8	20.5	127.1	170.0	166.7	152.6	קולומביה	733
799		Other Countries		0.0	0.0	0.0	0.0	0.0	0.0	1.7	0.2	6.4	0.4	1.7	2.0	יתר הארצות	799
		<b>Oceania</b>		<b>13.1</b>	<b>6.6</b>	<b>142.1</b>	<b>191.3</b>	<b>220.7</b>	<b>132.8</b>	<b>61.8</b>	<b>53.2</b>	<b>504.0</b>	<b>429.1</b>	<b>679.2</b>	<b>471.7</b>	<b>אוקיאניה</b>	
805		Australia	AU	10.5	6.1	125.5	177.8	198.6	121.6	58.1	47.7	462.0	366.3	606.2	427.0	אוסטרליה	805
810		New Zealand	NZ	2.6	0.5	16.1	12.8	21.8	10.8	3.1	3.7	37.3	57.8	65.5	41.2	ניו זילנד	810
806		Papua New Guinea	PG	0.0	0.0	0.0	0.0	0.0	0.0	0.1	1.5	0.4	2.0	0.6	1.6	פפואה גינאה החדשה	806
807		Fiji	FJ	0.0	0.0	0.5	0.7	0.3	0.0	0.5	0.3	3.4	2.1	3.1	0.1	פיג'י	807
899		Other Countries		0.0	0.0	0.0	0.0	0.0	0.4	0.0	0.0	0.9	0.9	3.8	1.8	יתר הארצות	899
		<b>Unclassified</b>													<b>ארצות בלתי מסווגות</b>		
<b>900</b>		<b>Countries</b>		<b>1056.5</b>	<b>603.0</b>	<b>9520.9</b>	<b>6189.9</b>	<b>10109.7</b>	<b>7016.9</b>	<b>321.7</b>	<b>277.7</b>	<b>1976.1</b>	<b>2308.0</b>	<b>1693.2</b>	<b>1977.3</b>	<b>900</b>	

(1) Since July 1997 the data on trade with Hong-Kong should be added to the data on China.

(1) החל בחודש יולי 1997 יש לצרף לנתונים על סין את נתוני הסחר עם הונג קונג.

Table D 3. - Trade Countries,  
by Countries and Country Group <sup>(1)</sup>

לוח ד 3. - ארצות הסחר,  
לפי ארצות וקבוצת ארצות <sup>(1)</sup>

Million \$										מיליוני דולרים			
Imports					Exports					יבוא		יבוא	
יתר ארצות	אסיה	ארצות הברית	האיחוד האירופי	סך הכל	יתר ארצות	אסיה	ארצות הברית	האיחוד האירופי	סך הכל				
Other Countries	Asia	USA	European Union	Grand Total	Other Countries	Asia	USA	European Union	Grand Total				
<b>Original data</b>										<b>נתונים מקוריים</b>			
1,119.0	816.9	511.8	1,596.2	4,043.9	963.3	652.7	1,177.5	1,125.5	3,919.0	XII	2009		
1,425.5	848.0	405.3	1,316.4	3,995.2	719.6	618.3	814.6	1,065.9	3,218.4	I	2010		
1,041.3	835.9	397.7	1,356.6	3,631.5	607.0	604.1	836.4	985.2	3,032.7	II			
1,465.7	919.8	541.6	1,550.0	4,477.1	932.2	1,000.1	1,073.1	1,167.4	4,172.8	III			
1,286.5	823.6	482.6	1,398.8	3,991.5	739.2	568.5	996.6	1,060.9	3,365.2	IV			
1,283.8	1,000.4	498.0	1,367.6	4,149.8	725.2	644.0	971.4	1,026.2	3,366.8	V			
1,264.4	957.8	504.2	1,446.7	4,173.1	805.2	737.7	1,226.0	1,228.7	3,997.6	VI			
1,427.6	933.8	467.2	1,391.4	4,220.0	974.2	626.7	1,111.3	968.9	3,681.1	VII			
1,167.4	1,230.4	526.5	1,547.9	4,472.2	671.2	719.2	882.6	1,052.7	3,325.7	VIII			
1,221.9	825.3	407.9	1,209.0	3,664.2	694.2	684.3	872.4	903.8	3,154.7	IX			
1,460.0	1,047.0	597.6	1,670.1	4,774.7	653.2	676.0	784.1	1,134.3	3,247.6	X			
1,032.9	926.5	486.0	1,667.7	4,113.1	821.2	689.6	935.9	1,010.9	3,457.6	XI			
1,647.6	1,016.1	597.1	1,535.4	4,796.2	973.6	811.3	1,172.3	1,048.5	4,005.7	XII			
<b>Seasonally adjusted data</b>										<b>נתונים ממוכי עונתיים</b>			
1,152.6	793.2	467.5	1,463.6		912.6	576.7	967.3	1,017.6		XII	2009		
1,425.3	877.3	416.0	1,418.2		810.1	693.6	942.1	1,035.7		I	2010		
1,310.7	884.4	426.6	1,443.9		722.0	731.7	1,000.4	1,033.0		II			
1,401.9	980.0	514.9	1,505.4		838.8	845.1	1,006.4	986.8		III			
1,394.6	927.6	509.6	1,451.6		716.0	717.3	1,112.7	1,068.9		IV			
1,315.5	985.9	500.3	1,409.5		697.1	648.1	969.7	1,065.4		V			
1,306.6	972.7	494.8	1,437.3		738.7	691.2	1,085.9	1,125.5		VI			
1,449.2	948.1	509.8	1,450.6		926.5	685.5	1,105.3	1,047.8		VII			
927.0	1,001.5	515.9	1,398.1		700.1	687.7	905.2	1,075.9		VIII			
1,175.8	907.9	480.6	1,446.0		721.2	654.4	950.5	1,034.3		IX			
1,379.4	991.1	544.1	1,610.8		701.3	690.4	830.2	1,118.9		X			
1,221.0	958.6	466.8	1,516.0		844.5	729.1	883.2	1,021.3		XI			
1,633.7	1,056.4	563.3	1,480.4		922.7	685.8	969.2	941.2		XII			
<b>Trend data - Million \$</b>										<b>נתוני מגמה - מיליוני דולרים</b>			
1,233.5	840.8	425.7	1,404.9		723.3	667.4	1,013.7	983.7		XII	2009		
1,285.7	876.6	441.0	1,429.2		744.6	695.5	1,015.8	1,009.2		I	2010		
1,324.8	908.3	457.5	1,443.9		760.2	715.6	1,023.0	1,030.1		II			
1,347.2	933.1	473.5	1,449.7		767.7	726.4	1,033.5	1,046.5		III			
1,352.7	949.0	487.2	1,449.3		767.0	727.7	1,042.2	1,058.1		IV			
1,344.1	956.0	497.7	1,446.5		760.4	721.4	1,043.5	1,064.3		V			
1,326.4	956.3	504.8	1,445.3		752.1	710.5	1,033.9	1,064.6		VI			
1,306.0	953.6	509.0	1,448.3		746.4	698.7	1,013.2	1,059.6		VII			
1,288.4	952.8	511.3	1,456.1		746.5	689.0	986.2	1,050.4		VIII			
1,276.9	957.3	513.1	1,466.9		753.7	682.9	959.8	1,039.0		IX			
1,271.8	969.1	515.7	1,477.8		767.8	680.5	940.0	1,027.7		X			
1,271.6	987.1	519.8	1,486.4		787.5	681.3	930.0	1,018.5		XI			
1,274.2	1,008.3	525.4	1,491.5		808.8	684.3	930.1	1,012.9		XII			
<b>Trend data- Percent change <sup>(2)</sup></b>										<b>נתוני מגמה - אחוז השינוי <sup>(2)</sup></b>			
4.2	4.3	3.6	1.7		2.9	4.2	0.2	2.6		I	2009		
3.0	3.6	3.7	1.0		2.1	2.9	0.7	2.1		II			
1.7	2.7	3.5	0.4		1.0	1.5	1.0	1.6		III			
0.4	1.7	2.9	0.0		-0.1	0.2	0.8	1.1		IV			
-0.6	0.7	2.2	-0.2		-0.9	-0.9	0.1	0.6		V			
-1.3	0.0	1.4	-0.1		-1.1	-1.5	-0.9	0.0		VI			
-1.5	-0.3	0.8	0.2		-0.8	-1.7	-2.0	-0.5		VII			
-1.3	-0.1	0.5	0.5		0.0	-1.4	-2.7	-0.9		VIII			
-0.9	0.5	0.4	0.7		1.0	-0.9	-2.7	-1.1		IX			
-0.4	1.2	0.5	0.7		1.9	-0.4	-2.1	-1.1		X			
0.0	1.9	0.8	0.6		2.6	0.1	-1.1	-0.9		XI			
0.2	2.1	1.1	0.3		2.7	0.4	0.0	-0.5		XII			

(1) Excl. aircraft, ships and diamonds.

(2) Percent change on previous period.

(1) ללא אניות, מטוסים ויהלומים.

(2) השינוי באחוזים, כל תקופה לעומת קודמתה.

Table D 5. - Country Members of OECD - Imports and Exports

לוח ד 5 - מדינות חברות ב-OECD - יבוא ויבוא

Million \$		מיליון דולרים												מסל			
מסל	Code	Countries	ISO	Imports						Exports						ארצות	Code
				XII						XII							
				2010	2009	2010	2009	2008	2007	2010	2009	2010	2009	2008	2007		
		<b>Grand Total</b>		<b>5677.3</b>	<b>4769.7</b>	<b>59122.4</b>	<b>47368.2</b>	<b>65173.2</b>	<b>56623.0</b>	<b>5371.6</b>	<b>4971.1</b>	<b>58430.6</b>	<b>47935.5</b>	<b>61339.1</b>	<b>54092.0</b>		
		<b>Total OECD</b>		<b>3322.0</b>	<b>3165.4</b>	<b>35389.7</b>	<b>30786.1</b>	<b>40056.3</b>	<b>36029.2</b>	<b>3424.0</b>	<b>3318.5</b>	<b>38274.3</b>	<b>33169.6</b>	<b>43190.3</b>	<b>39278.4</b>		
105	Austria	AT		25.3	24.2	263.4	267.3	399.2	297.1	20.3	14.6	155.4	99.9	99.9	118.5		אוסטריה
805	Australia	AU		10.7	6.3	127.4	178.7	240.4	139.3	63.5	53.7	531.7	432.7	711.3	520.2		אוסטרליה
005	Italy	IT		210.4	212.9	2425.6	2126.0	2553.7	2302.1	79.0	90.0	1263.6	1103.0	1668.8	1284.4		איטליה
107	Iceland	IS		0.4	0.5	19.5	11.8	17.7	13.3	0.1	0.8	3.1	2.8	3.5	4.9		אירלנד
007	Ireland	IE		62.3	45.4	519.5	473.1	415.1	368.1	7.7	5.3	81.0	92.4	99.9	118.9		אירלנד
505	USA	US		706.5	587.6	6698.2	5849.1	8034.4	7848.9	1793.8	1629.3	18530.7	16774.1	19972.5	18906.8		ארצות הברית
010	Belgium	BE		357.3	281.1	3575.5	2567.8	4250.3	4454.9	228.6	217.9	3112.9	2371.8	4618.7	4070.8		בלגיה
015	Germany	DE		310.2	380.5	3676.5	3361.8	3940.5	3484.3	178.8	152.7	1698.2	1440.3	1950.6	1913.0		גרמניה
017	Denmark	DK		14.0	24.2	200.1	200.8	215.4	185.6	9.8	26.3	99.8	136.2	167.0	108.4		דנמרק
020	Netherlands	NL		202.5	182.3	2101.9	1885.4	2465.3	2090.3	166.4	170.7	1824.2	1550.8	2035.0	1609.3		הולנד
235	Hungary	HU		23.5	25.5	268.7	252.4	288.8	195.6	11.8	7.4	105.5	113.1	174.5	116.3		הונגריה
023	United Kingdom	GB		191.2	189.7	2243.6	1907.2	2519.9	2681.4	124.9	137.7	2268.1	1423.5	1892.7	1938.1		הממלכה המאוחדת
324	Turkey	TR		163.6	121.4	1800.2	1387.7	1825.3	1606.9	101.9	112.0	1324.4	1086.0	1609.9	1195.8		טורקיה
245	Greece	GR		19.0	23.5	199.3	200.7	221.4	284.5	27.3	24.8	214.4	295.3	301.0	290.9		יוון
327	Japan	JP		173.6	128.7	1779.4	1523.7	2226.7	1882.1	61.7	49.2	655.8	527.6	883.0	769.6		יפן
025	Luxembourg	LU		13.7	9.7	185.0	117.0	174.0	91.9	0.9	1.2	14.2	10.8	20.4	15.3		לוקסמבורג
723	Mexico	MX		10.5	14.8	178.5	117.8	115.8	57.9	23.8	33.3	304.2	271.7	329.3	289.8		מקסיקו
120	Norway	NO		5.0	5.4	59.2	52.0	52.4	65.0	4.3	5.3	57.9	59.0	73.7	61.4		נורבגיה
810	New Zealand	NZ		2.6	0.5	16.1	12.9	21.8	10.8	3.5	3.8	39.7	59.5	67.8	43.6		ניו זילנד
244	Slovenia	SI		10.0	24.5	196.0	122.4	65.4	97.1	15.2	32.1	149.3	124.4	125.2	100.3		סלובניה
272	Slovakia	SK		7.3	6.4	82.4	60.9	49.4	17.2	3.0	8.4	19.2	23.4	28.5	18.5		סלובקיה
260	Spain	ES		80.7	82.1	974.9	880.1	959.1	811.9	73.4	102.6	1039.4	940.5	1108.0	1106.0		ספרד
265	Poland	PL		15.9	20.4	237.3	169.8	152.8	127.7	17.9	14.5	217.9	202.2	287.2	237.1		פולין
125	Portugal	PT		7.0	15.1	95.0	100.1	114.2	126.2	7.2	9.0	103.3	111.3	98.9	90.9		פורטוגל
130	Finland	FI		27.7	22.1	359.5	332.6	370.2	339.5	17.1	12.7	138.1	121.1	169.1	155.3		פינלנד
731	Chile	CL		5.5	3.1	50.1	31.7	32.5	14.9	6.4	7.8	85.5	68.3	119.9	78.2		צ'ילה
271	Czech Republic	CZ		22.5	21.1	268.1	188.0	165.6	136.4	10.9	10.3	149.3	132.3	161.6	132.6		צ'כיה
030	France	FR		142.2	152.8	1517.0	1428.7	1889.2	1480.9	127.2	117.0	1280.7	1110.6	1298.0	1313.2		צרפת
372	South Korea	KR		95.9	75.0	1101.0	871.1	1102.9	945.4	72.1	78.0	850.9	841.0	818.5	746.1		קוריאה הדרומית
510	Canada	CA		30.4	25.8	398.8	294.4	509.4	433.7	82.6	61.8	737.9	578.3	901.7	714.3		קנדה
135	Sweden	SE		46.4	47.1	552.1	523.1	693.6	556.0	18.8	13.9	165.1	121.0	181.9	171.5		שוודיה
140	Switzerland	CH		328.2	405.7	3219.9	3290.0	3973.6	2882.3	64.1	114.0	1047.4	942.3	1210.4	1036.1		שווייץ
				<b>Excl. Diamonds</b>													
		<b>Grand Total</b>		<b>4797.7</b>	<b>4061.2</b>	<b>50732.1</b>	<b>42050.1</b>	<b>55808.5</b>	<b>46587.0</b>	<b>4005.7</b>	<b>3919.0</b>	<b>42032.4</b>	<b>36336.6</b>	<b>41941.3</b>	<b>35673.4</b>		
		<b>Total OECD</b>		<b>2800.1</b>	<b>2703.1</b>	<b>30693.2</b>	<b>27626.1</b>	<b>34210.8</b>	<b>30122.9</b>	<b>2540.0</b>	<b>2601.0</b>	<b>27579.1</b>	<b>25340.2</b>	<b>29472.2</b>	<b>25467.1</b>		
105	Austria	AT		25.3	24.1	262.2	266.3	397.0	296.6	20.0	14.4	151.9	96.7	95.4	115.6		אוסטריה
805	Australia	AU		10.5	6.1	125.5	177.8	198.6	121.6	58.1	47.7	462.0	366.3	606.2	427.0		אוסטרליה
005	Italy	IT		209.9	212.9	2422.1	2118.7	2534.6	2295.0	72.6	87.8	1211.5	1044.9	1597.4	1203.0		איטליה
107	Iceland	IS		0.4	0.5	19.5	11.8	17.7	13.3	0.1	0.2	3.1	2.2	3.5	4.9		אירלנד
007	Ireland	IE		62.3	45.4	519.5	473.1	415.1	368.1	7.7	5.3	81.0	92.4	99.9	118.9		אירלנד
505	USA	US		597.5	512.8	5924.1	5352.1	7067.3	6921.9	1172.3	1177.5	11683.2	11846.4	11601.2	9967.7		ארצות הברית
010	Belgium	BE		117.5	108.0	1337.1	1166.2	1371.1	1272.0	70.0	89.9	857.5	811.3	1201.6	996.4		בלגיה
015	Germany	DE		308.5	379.8	3671.7	3359.5	3938.9	3481.7	175.1	149.5	1655.9	1399.5	1901.7	1862.6		גרמניה
017	Denmark	DK		13.8	24.2	199.7	200.8	215.1	185.6	9.8	26.3	97.8	132.8	164.5	107.3		דנמרק
020	Netherlands	NL		202.5	182.3	2101.9	1885.4	2465.3	2090.3	165.3	170.5	1818.3	1550.3	2031.0	1606.3		הולנד
235	Hungary	HU		23.3	25.5	268.5	251.9	288.7	195.6	11.7	7.4	105.4	112.9	174.0	116.2		הונגריה
023	United Kingdom	GB		150.8	156.2	1705.6	1459.7	1765.7	1758.4	103.9	126.3	2015.2	1265.2	1619.8	1624.0		הממלכה המאוחדת
324	Turkey	TR		162.8	121.4	1798.9	1387.2	1823.2	1605.2	100.9	110.5	1309.1	1070.7	1586.4	1167.8		טורקיה
245	Greece	GR		19.0	23.5	199.3	200.7	221.2	284.5	27.3	24.5	213.6	292.6	294.3	284.7		יוון
327	Japan	JP		172.2	128.0	1762.5	1513.9	2210.2	1871.8	56.4	46.7	605.9	472.7	796.3	669.9		יפן
025	Luxembourg	LU		13.7	9.7	185.0	117.0	174.0	91.9	0.9	1.2	14.2	10.8	20.4	15.3		לוקסמבורג
723	Mexico	MX		10.5	14.8	178.5	117.8	115.8	57.9	23.8	33.3	304.2	268.7	329.2	289.7		מקסיקו
120	Norway	NO		5.0	5.4	59.2	52.0	52.4	65.0	4.3	5.3	57.9	59.0	73.7	61.4		נורבגיה
810	New Zealand	NZ		2.6	0.5	16.1	12.8	21.8	10.8	3.1	3.7	37.3	57.8	65.5	41.2		ניו זילנד
244	Slovenia	SI		10.0	24.5	196.0	122.4	65.4	97.1	15.2	32.1	149.3	124.4	125.2	100.3		סלובניה
272	Slovakia	SK		7.3	6.4	82.4	60.9	49.4	17.2	3.0	8.4	19.2	23.4	28.5	18.5		סלובקיה
260	Spain	ES		80.6	81.5	974.7	879.3	958.9	811.9	72.7	101.8	1031.3	933.7	1092.4	1079.2		ספרד
265	Poland	PL		15.9	20.4	237.3	169.8	152.8	127.7	17.9	14.5	217.5	201.5	284.9	236.6		פולין
125	Portugal	PT		7.0	15.1	94.9	100.1	114.2	126.2	7.2	9.0	103.0	111.3	98.9	90.9		פורטוגל
130	Finland	FI		27.7	22.1	359.5	332.6	370.2	339.5	17.0	12.6	136.8	119.8	167.8	154.1		פינלנד
731	Chile	CL		5.5	3.1	50.1	31.7	32.5	14.9	6.4	7.7	84.9	67.5	119.6	77.8		צ'ילה
271	Czech Republic	CZ		22.5	21.1	268.1	188.0	165.6	136.3	10.7	10.2	148.1	131.0	158.9	132.1		צ'כיה
030	France	FR		142.1	151.9	1515.7	1426.8	1882.0	1479.7	119.6	110.8	1178.6	1052.1	1162.6	1202.3		צרפת
372	South Korea	KR		95.9	75.0	1101.0	871.1	1102.9	945.1	71.8	77.4	844.7					