

PRESS RELEASE

info@cbs.gov.il

http://www.cbs.gov.il

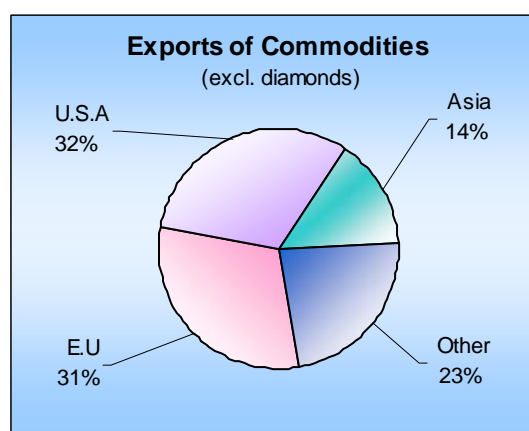
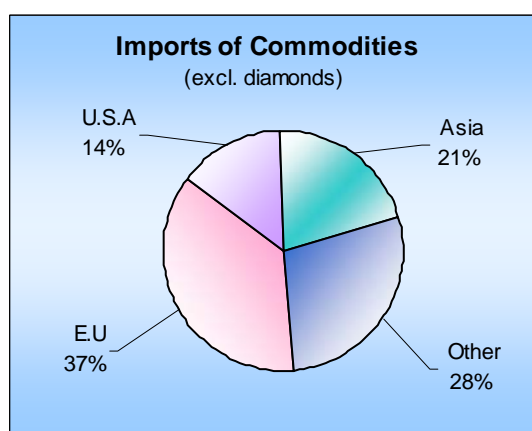
FAX. 02-652 1340

Jerusalem, July 19, 2009
147/2009

Previous Press Release on Foreign Trade appeared on June 18, 2009

Israel's Foreign Trade by Country – June 2009

In June 2009, **import of goods** totaled \$3.9 billion, **exports of goods** totaled \$4.3 billion and the **trade surplus** totaled \$0.4 billion.



The above is based on **temporary data** regarding goods that cleared Customs, not including trade between Israel and the Palestinian Authority.

Main Trading Country Groups	Imports		Exports		Trade Balance	
	January-June		January-June		January-June	
	2009	2008	2009	2008	2009	2008
(in US million dollars)						
Total	21,261.4	33,716.8	21,837.8	32,869.8	576.4	-847.0
European Union	7,853.5	11,875.4	5,996.2	9,918.6	-1,857.3	-1,956.8
U.S.A.	2,927.8	4,096.2	7,489.0	10,638.2	4,561.2	6,542.0
Asia	4,530.2	6,842.9	3,926.9	6,376.0	-603.3	-466.9
Other Countries	5,949.9	10,902.3	4,425.7	5,937.0	-1,524.2	-4,965.3

The above is based on **temporary data** regarding goods that cleared Customs, not including trade between Israel and the Palestinian Authority. The data do not include import and export of services that include, among others, software. Data on all exports and imports of goods and services are published as part of the Balance of Payments, every quarter. Imports are valued c.i.f., and exports are valued f.o.b.

Written by Helen Brusilovsky

For explanations and clarifications regarding the contents of this Press Release,
Please contact the Press Relations Unit, at 02-652 7845, 050-623 5124

Development of trade in goods in June 2009, compared with May, was influenced by changes in the value of the U.S.A. Dollar against other currencies in which **import and export** transactions are conducted. Compared to the Euro the U.S.A. Dollar fell by 3.1%, compared to the UK Pound fell by 6.3%, compared to the Swiss Franc fell by 2.8% and compared to the Japanese Yen the U.S.A. Dollar fell by 0.3%.

Trade Balance

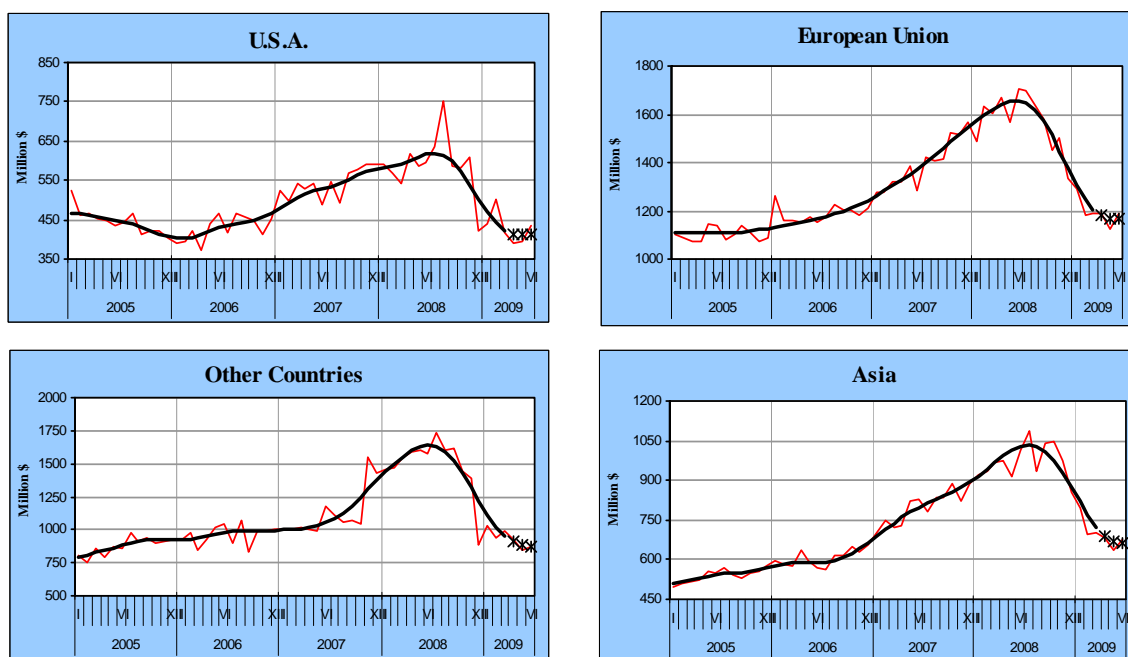
The trade balance (excluding diamonds) shows a deficit of \$2.6 billion in January-June 2009 (\$6.8 billion in the same months of 2008). The trade balance (excluding diamonds) by main country groups shows a surplus of \$2.6 billion with USA, a deficit of \$2.0 billion with EU countries, a deficit of \$1.7 billion with Asian countries and a deficit of \$1.6 billion with Other Countries group.

Imports of goods

Import of goods (excluding diamonds), in current prices in U.S. dollars, totaled \$3.5B in June.

The trend data calculated by the Central Bureau of Statistics, seasonally adjusted for irregular elements, point to drop on **imports of goods** of 13.4%, at an annual rate, during April-June 2009.

Trend data by main country groups indicates that imports from **EU countries** point to a drop of 7.0%, at an annual rate, during April-June 2009. Imports from **USA** point to a drop of 8.9%, imports from **Asia** point to a drop of 28.7% and imports from **Other Countries** point to a drop of 23.2% during the last three months.

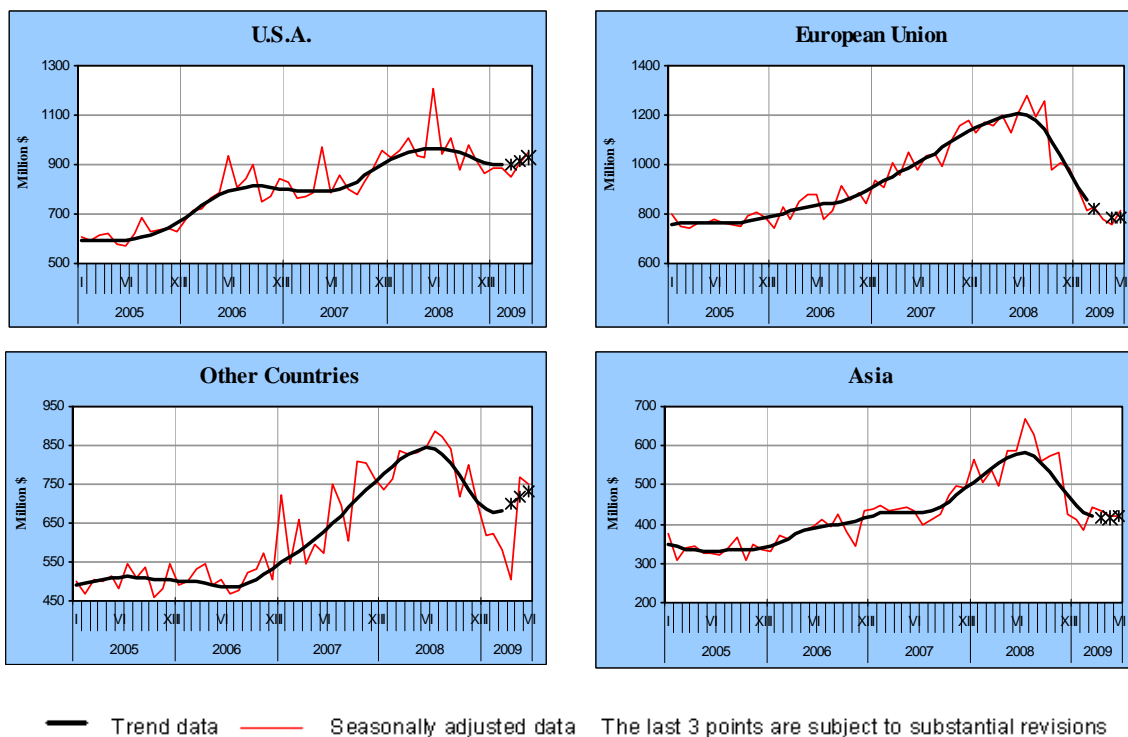


— Trend data — Seasonally adjusted data The last 3 points are subject to substantial revisions

Exports of goods

The trend data calculated by the Central Bureau of Statistics, seasonally adjusted and adjusted for irregular elements, point to a rise of **export of goods** (excluding diamonds) of 1.2% during April-June 2009 at an annual rate.

Trend data by main country groups indicates that exports to **USA** point to a rise of 15.8%, at an annual rate, during April-June 2009. Exports to **EU countries** point to a drop of 10.6%: exports to **Asia** point to a rise of 0.3% and exports to **Other Countries** group point to a rise of 33.4% during the last three months.



Next Press Release on Israel's Foreign Trade will appear on August 19, 2009.

Related links and publications

Definitions and explanations

“Foreign Trade Statistics Monthly”

“Israel’s Foreign Trade” – Press Release

“Foreign Trade Price Indices” – Press Release

“Imports by Country of Origin” – Press Release

“Foreign Exchange Rates” – Press Release (Hebrew only)

“Trade Balance by Technological Intensity” – Press Release

“Exports by Country and Industry, 2007” – Press Release

“Foreign Trade of Israel” – Statistilite Series No 41

“Foreign Trade of Israel- Selected countries 2005” Statistilite Series No 66

“Israel’s Foreign Trade-2008” (Presentation- Internet only)

Exports, by Commodities and Countries, 2008 (Internet only)

Exports, by Commodities and Countries, 1996-2007 (CD only)

Imports, by Commodities and Countries, 2007-2008 (Internet only)

Imports, by Commodities and Countries, 2007 (CD)

Imports, by Commodities and Countries, 2002-2006 (CD only)

Imports, by Commodities and Countries, 1996-2001 (CD only)

DEFINITIONS AND EXPLANATIONS

The Population Investigated

1. Statistical data on foreign trade presented in the publications of the Central Bureau of Statistics and in this Monthly Bulletin relate solely to import and export of commodities. Data on import and export of services and the remaining international business of Israel are included in the Balance of Payments published quarterly in the "Monthly Bulletin of Statistics" and in greater detail in the Current Statistics series.
2. Imports and exports are recorded according to the "Special System"¹, by which only that portion of the trade flowing through customs is included. Accordingly, imports do not include goods imported and stored in bonded warehouses, and exports do not include goods exported from these warehouses. Neither included are goods in transit.
 - a. **Gross imports** include consignments imported from abroad for local use (including finishing and repair) which are freed by the Customs immediately after unloading, or which were freed after a time from the bonded warehouses of the Customs. Import data do not include commodities put into bonded warehouses, except for a number of productive enterprises, which are recognized as bonded warehouses. Imports do not include consignments which were exported in the past and which were returned to Israel without any further processing.
 - b. **Net imports** are obtained by deducting from gross imports the value of goods imported earlier and returned to a supplier abroad without processing or changing its form. As there is no way of identifying the date of entry of the goods to Israel which are being returned abroad, the deduction is done on the date of return abroad. For this reason the returns are deducted from the grand total and not from items detailed by branches.
 - c. **Gross exports** include the flow of products abroad, except consignments of commodities which were previously imported and then returned to a supplier abroad without any processing. It also includes part-finished goods which are sent abroad for additional processing and which eventually will be returned to the sender, and goods which were imported and sold to abroad without processing, when the purchaser is not the supplier.
 - d. **Net exports** are obtained by deducting from the value of gross exports the value of goods, which were previously exported but were returned to the Israeli supplier without processing or change of form. As there is no means of identifying the original date of consignment abroad of exports returned from abroad, the deduction operates on the date of return rather than the date of original export. For this reason returns are deducted from the grand total and not from items detailed by branches (excluding diamonds).
3. The date of statistical registration of the import is the date of the release of the goods by the Customs authorities, whereas for exports it is the date of loading the goods on ship, airplane, or trucks (land transport to Jordan).
4. Foreign trade statistics include, among others, the following goods and business activities:
 - a. Personal import and export: personal effects of immigrants, seamen, returning residents and foreign diplomats (import) and of emigrants (export).
 - b. Parcels dispatched by mail (in recompense or as gifts).
 - c. Ships and aircraft are included in import and export data whether they have passed through Customs or not. Imports include ships purchased from abroad by Israeli companies and sailing under Israeli flag or a foreign flag. It should be noted that ships and aircraft do not undergo the procedure of passing through Customs.

Exports include ships and aircraft, which were produced in Israel and those, which were previously purchased and later resold abroad in the reporting period.
 - d. Products for exhibitions and fairs are, in principle, included in foreign trade data only if they were sold or given away free of charge. Returns from exhibitions are not included in foreign trade but there are difficulties in identifying these flows.

¹ United Nations, *International Trade Statistics Concepts and Definitions*, Statistical Papers, Series M, No. 52/ Rev. 2, 1998.

- e. Equipment imported or exported on a lease basis (e.g., electronic computers and other data processing equipment).
- f. Gold and silver (non-monetary), both in processed or partly processed form, scrap and remnants intended for industry, smelting or medical use.
- g. Fuel and food supplied to foreign ships and aircraft in Israeli ports are included in export since 1969, even though they did not pass through Customs.

5. Special transactions and commodities not included in foreign trade statistics:

- a. Commodities imported or exported for a limited period of time and returned without having undergone any processing, e.g. personal effects of tourists (including cars); goods intended for exhibitions, fairs, displays, etc.; commodities intended for temporary storage only; equipment sent to perform contract work and returned after use.
- b. Effects purchased by tourists in Israel or by Israelis abroad. An estimate of the value of these purchases is included in the account of services in the Balance of Payments. In cases where duty has been charged on goods purchased by Israeli tourists, the goods were included in total imports.
- c. Engines and parts of aircraft sent by local airlines to their branches or representatives abroad for replacement or repairs and those sent to Israel from branches abroad for repairs or replacement.
- d. Fish caught by Israeli fishing vessels.
- e. Monetary gold, securities and legal tender (notes and coins) or currency about to be made legal tender (local currency notes printed abroad are recorded according to the value of the printers and not according to face value).
- f. Fuel and food supplied to Israeli ships and aircraft in foreign ports (recorded in Balance of Payments as services).
- g. Ballast and dunnage supplied to foreign ships in Israeli ports and to Israeli ships in foreign ports.
- h. Imported military equipment and weapons (estimated value is included in the commodities account in the Balance of Payments). The flow is not included in the import of goods because it does not undergo the usual procedure of passing through customs.

6. The trade with the Palestinian Authority

The trade data do not include the transactions with residents of the Palestinian Authority. The data also do not include the value of the import and export commodities, which were released by the Israeli customs and belong to residents of the Palestinian Authority. Data on trade with Palestinian Authority is published within the Balance of Payment.

Classification of Commodities

1. The classification, according to which foreign trade statistics are processed and published, is the classification that serves the customs² in handling the import and export shipments. Import data are classified according to the details in the customs tariff³ and export data - according to the "Classification of Export Commodities"⁴.

As of January 1st 1988, the customs' classification of commodities, which serves the customs and statistical data processing, was based on a new international nomenclature, which was prepared by the Customs Cooperation Council – "The Harmonized Commodity and Coding System" (H.S.)⁵. This nomenclature replaces the Nomenclature "Classification of Goods in Customs Tariff" of which the first

² <http://www.mof.gov.il/customs/taarif.htm>

³ *Customs Tariff and Exemption Ordinance for 2002*, edited according to H.S. - 2002, Kovetz Hatakanot No. 1295, 1 January 2002.

⁴ The Ministry of Industry and Trade, The Customs Authority *Classification of Export Commodities Edited* according to H.S.- 1988, *Customs and Excise Dept.*, No. 511, 1 January 1988, updated for 1992.

⁵ http://europa.eu.int/comm/eurostat/ramon/nomenclatures/index.cfm?TargetUrl=LST_NOM

version was introduced at 1962 named "Brussels' Tariff Nomenclature" (B.T.N.) and the last version was the C.C.C.N. – "Customs Cooperation Council Nomenclature". In the special Supplement to Quarterly No. 4, 1988, details are presented on the new nomenclature, its aims, structure, and its principles of classification.

2. **S.I.T.C.**⁶

Import and export data are also classified according to the U.N.⁷ Standard International Trade Classification, in which goods are classified in groups that are better suited for statistical presentation. This classification is obtained by a special sorting of details in the customs classification and their concentration in groups according to the structure of the classification. More details on the S.I.T.C. and its last version are presented in the Supplement to the Foreign Trade Quarterly No. 1, 1988.

3. **Classification by Economic Branches**

Export data is presented by branch of origin, meaning: the classification was done by the economic branch to which the product pertains by character. The division of the products into branches was done based on the description of the goods in the goods classification and not based on the exporter's branch. The definition of the branches is based on the classification of economic branches prepared by the Central Bureau of Statistics.

Starting with Quarterly No.1, 1995, data are published on export goods classified by new branch (origin)⁸. Until this Quarterly export goods were classified according to the "Standard Industrial Classification of All Economic Branches 1970" (Technical Publication No. 46).

Starting with Monthly No.8, 2003, data on export goods are published classified by new branch (origin)⁹.

Export data classified by new branch can be obtained from the Bureau's database starting 1988.

4. **Classification by Economic destination.**

This classification, according to which data on imports are presented, divides the items by three uses: consumer goods, raw materials for production and investment goods. Each use is sub-divided into secondary groups. In certain cases when a product is intended for more than one use, this product's import value is divided into the appropriate uses (e.g. passenger cars are both consumer goods and investment goods; sugar functions as consumer goods as well as a raw material).

In this classification the division of imports is into primary uses of the goods, i.e. the first use made of them: consumption, as raw materials - for production, or investment. Unprocessed and partly processed goods and components for assembling machinery and automobiles are classified as "raw materials". Spare parts, tools and accessories for additional use are also included under "raw materials". The classification by economic use is based on "Survey of Import Destination" which is conducted once in several years by the Central Bureau of Statistics.

The Classification of Import Commodities, by economic destination was updated in the No.3, 1993 Quarterly, as based on the Import Destinations Survey 1988. The results of that survey were published in Special Publication No. 952¹⁰. Until the said quarterly, commodities were classified according to the 1982/83 survey, and henceforward they are classified according to the 1988 survey. The results of that survey were published in Special Publication No. 787¹¹.

5. **Countries**

⁶ United Nations, *Standard International Trade Classification, Revision III*, Statistical Papers, Series M, No. 34, New York 1986.

⁷ <http://unstats.un.org/unsd/cr/registry/regcst.asp?Cl=14>

⁸ Central Bureau of Statistics, *The Standard Classification of All Economic Activities 1993*, Technical Publication No.63, Jerusalem 1993.

⁹ Central Bureau of Statistics, *The Standard Classification of All Economic Activities 1993*, Technical Publication No. 63, Second Edition, Jerusalem 2003.

¹⁰ Central Bureau of Statistics, Import Destination Survey 1988, Special Series No. 952.

¹¹ Central Bureau of Statistics, Import Destination Survey 1982/83, Special Series No. 787.

- a. The country of import might be, "the country of purchase", "the country of origin" or "the country of dispatch". "The country of purchase" is defined as the country from which the invoice for the goods imported was sent; "the country of origin" is defined as the manufacturing country of the goods; "the country of dispatch" is defined as the country in which the goods were loaded on ship, airplane, or trucks. In some cases, "the country of purchase" is different from "the country of origin" and from "the country of dispatch".
- b. The country of export (destination) is defined as "the country of sale", i.e. the country of the purchaser. In fact the country of export is recorded as the country to which the invoice for the goods exported was sent. In certain cases "the country of export" is different from the country of consumption and the country of shipment.
- c. As from the agricultural export season of 1991/92 with the dissolution of the Board of Citrus Marketing and transfer of export to other companies, most shipments of this export arrive to Belgium, and are bought by various agents. As a result, there is no information on the country of the (final) destination of the commodity. Also the sale of flowers through the flower exchange is recorded as exports to Netherlands without no possibility to classify by country of final destination.
- d. Data on the import and export of commodities are published according to countries, blocs, regions and continents. The countries within the group are arranged alphabetically according to the Hebrew name of the country within the group.
- e. List of changes introduced to countries and blocs:
 - Through accession of the German Republic to the Federal Republic of Germany with effect from 3 November 1990, the two German States have united to form one sovereign state. As from that date all data shown referring to the Federal Republic of Germany are under the designation of "Germany".¹²
 - In 1991 the Union of Soviet Socialist Republic formally dissolved into 15 independent countries: Ukraine, Azerbaijan, Estonia, Armenia, Belarus, Georgia, Russian Federation, Latvia, Lithuania, Moldova Republic, Uzbekistan, Tajikistan, Turkmenistan, Kazakhstan and Kyrgyzstan. From June 1st 1992 onward data are shown for the individual countries.¹³
 - Beginning September 1st 1992 the former Yugoslavia data is referred to the new sovereign countries: Bosnia and Herzegovina, Croatia, Slovenia, the Federal Republic of Yugoslavia and Yugoslavia republic of Macedonia.¹⁴
 - On June 4, 2003, the official name of the Federal Republic of Yugoslavia has been changed to Serbia and Montenegro.
 - As of January 1st 1994 Czech Republic data is referred separately to Czech Republic and Slovakia.
 - From June 2004, the following countries joined the European Union: Estonia, Hungary, Latvia, Lithuania, Malta, Slovenia, Slovakia, Poland, Czech Republic and Cyprus.¹⁵
 - Trade data concerning Luxemburg and Belgium are published separately for each country. Exceptionally, are two tables, in which until 1994 data of both countries were published jointly: (a) Table 13 – "Exports, Imports and Trade Balance, by Country, of Purchase and Destination"; (b) Table 14 – " Main Trading Countries, by Commodity Groups".

Also in table 12, "Exports to Main Trading Partners, by Commodity Groups", joint data was published for both countries. But since 4th quarter 1994 its publication stopped.

¹² Central Bureau of Statistics, 'Foreign Trade Statistics Quarterly' No. 1, 1991, Vol. 42

¹³ Central Bureau of Statistics, 'Foreign Trade Statistics Quarterly' No. 2, 1992, Vol. 43

¹⁴ Central Bureau of Statistics, 'Foreign Trade Statistics Quarterly' No. 4, 1992, Vol. 43

¹⁵ Central Bureau of Statistics, 'Israel's Foreign Trade by Country - May 2004', Press Release 152/2004, June 17, 2004

The Value of Commodities

1. **The value of imports** is determined by the importers' report to Customs being based on the value of the transaction as defined in the Treaty of Brussels on the Evaluation of Goods for Customs Purposes (1950). The value of the transaction represents the value for which the goods were sold supplemented by expenditure on transportation and insurance as far as the border of the importing country, including costs of unloading at the exporting port. This definition of the value of the transaction in imports corresponds to the value of the goods according to C.I.F. (Cost, Insurance, Freight).

In most of the cases, the value for Customs purposes includes an imputation of local costs - wharfage and portage fees.

Import taxes and other taxes levied on imported goods are not included in the value for Customs purposes.

In the event of import of products unaccompanied by monetary recompense, where difficulty exists in determining the value of the transaction (as in the case of gifts), the value is determined by an estimate based on market price. So, for example, the cost of import of gifts for museums is based on the valuation of an insurance assessor.

If imported commodities are freed against a deposit, the import is recorded according to the date of release against the deposit until the final settlement of the account. The amendment of this import is recorded with final settlement, which is also dated according to the actual release of the goods (in other words an amendment of the value of the import may take place after several months).

2. **Import** data are recorded in the import entry forms in the currency of the transaction and are calculated in Israeli Shekels, according to the exchange rate on the date they are freed by customs and are converted into U.S. dollars too. The exchange rates for these purposes are the exchange rates for customs purposes on the date of the presentation of the entry forms. In the publications on Foreign Trade, the values of imports and exports are presented in U.S. dollars.

Since the floating of the Israeli Pound in November 1977, the rates of exchange between major foreign currencies and the Pound or the Shekel are determined for customs according to the rate dictated by the customs authorities on the basis of data provided by the Bank of Israel. To the extent that exchange rates fluctuate more than 2 percent in the daily rate of any currency, as fixed by the Bank of Israel, so the rates for customs purposes may be changed even in the middle of the week.

December 1980 and September 1985 changes were introduced concerning Israeli currency: December 1980 the prevailing currency, the Lira, was changed to shekel. The exchange rate was 10 Lira was equivalent to 1 Shekel. September 1985 the Shekel was changed into New Shekel. The exchange rate was 1,000 Shekels were equivalent to 1 New Shekel.

3. **The Value of exports** data are recorded according to F.O.B. (free on board) transaction values before discounts and commissions are paid to foreign factors.
4. **Export** data are recorded in the export entry forms in Israeli Shekels and in the currency in which the transaction is made. The conversion into U.S. dollars is carried out in the monthly summaries, according to the rate on the day the transaction was registered at customs.

Data Sources

The main sources for imports and exports data are the forms submitted to the customs authorities by importers and exporters (import and export entry forms).

Seasonally Adjusted Data

Several data series are presented Seasonally Adjusted.

Beginning January, 2005 the data analysis is done by means of the improved computer program X12-ARIMA/2000, replacing X12-ARIMA/2000 used before. This analysis is based on moving averages, which calculates the seasonal factors-S for each month. These factors may change by use of supplemented or updated data.

The seasonally adjusted data are estimated using the X-12-ARIMA seasonal adjustment method that was developed by the US Census Bureau and by a procedure developed in the Central Bureau of Statistics (CBS) for the simultaneous estimation of the moving festival dates and the number of trading days effects in Israel¹⁶.

The seasonally adjusted data are calculated by adjusting the original data for the influence of seasonality and festival and trading day effects. Trend data are estimated by removing the irregular influences (noise) from the seasonally adjusted data.

The seasonally adjusted data and the trend are subject to revisions as they are calculated anew, each month or quarter, on the basis of original data that include an additional observation (concurrent seasonal adjustment).

Starting 'Foreign Trade Quarterly' No. 1, 1995, 8 new export series and 5 additional import series are published. Monthly data for 1988 and onward can be obtained from the Bureau's database for each basic series and for series totals.

¹⁶ A detailed and updated explanation on the seasonal adjustment procedure and trend estimation is given in the publication "Seasonal and prior adjustment factors for 2007, trends for 2003-2007"(internet only, at the C.B.S.: "Classification and methods, statistical methods, time series"): <http://www.cbs.gov.il/publications/tseries/seasonal08/presentationh08pdf>

Table D 1. - Trade Countries -Imports and Exports

לוח ד 1. - ארצות הסחר - יבוא ויצוא

Million \$												מיליון דולרים						
סמל	Code	Countries	ISO	Imports				Exports				יצוא	ארצות	סמל	Code			
				VI		I - VI		VI		I - VI								
				2009	2008	2009	2008	2009	2008	2009	2008					2009	2008	
		Grand Total		3945.8	5944.8	21261.4	33716.8	65173.2	56623.0	4314.7	6158.1	21837.8	32869.8	61339.1	54092.0		סך כולל	
		Europe		1975.4	2776.1	10268.7	15531.1	29661.2	26832.3	1374.7	2206.7	7534.3	12290.2	21897.1	19192.6		אירופה	
		European Union		1522.8	2096.1	7853.5	11875.4	22513.4	20687.0	1122.1	1804.8	5996.2	9918.6	17795.0	15992.8		האיחוד האירופי	
105		Austria	AT	35.0	41.6	145.5	176.4	399.2	297.1	7.0	11.6	41.3	54.3	99.9	118.5		אוסטריה	105
005		Italy	IT	166.2	233.3	998.4	1336.8	2553.7	2302.1	131.3	163.7	582.7	960.4	1668.8	1284.4		איטליה	005
007		Ireland	IE	44.8	30.5	223.5	211.7	415.1	368.1	8.7	8.4	50.5	49.7	118.9		אירלנד	007	
224		Estonia	EE	0.4	0.2	1.0	1.9	4.1	3.6	0.2	1.1	3.7	8.0	13.7	16.6		אסטוניה	224
215		Bulgaria	BG	3.9	4.8	19.4	26.7	52.0	63.8	2.7	4.7	21.1	31.2	56.2	54.3		בולגריה	215
010		Belgium	BE	284.9	451.0	1124.3	2511.7	4250.3	4454.9	231.8	557.8	1148.3	2821.4	4618.7	4070.8		בלגיה	010
015		Germany	DE	269.8	359.0	1417.9	2094.4	3940.5	3484.3	117.3	166.4	691.6	1053.6	1950.6	1913.0		גרמניה	015
017		Denmark	DK	19.2	16.3	89.4	103.3	215.4	185.6	10.0	17.8	71.6	73.5	167.0	108.4		דנמרק	017
020		Netherlands	NL	148.7	207.3	881.9	1254.8	2465.3	2090.3	124.4	177.8	763.6	1078.7	2035.0	1609.3		הולנד	020
235		Hungary	HU	25.5	19.8	115.5	143.5	288.8	195.6	6.5	9.7	65.4	72.0	174.5	116.3		הונגריה	235
023		United Kingdom	GB	182.7	253.0	854.2	1309.2	2519.9	2681.4	141.6	173.4	690.5	1061.1	1892.7	1938.1		הממלכה המאוחדת	023
245		Greece	GR	12.3	13.7	101.5	108.3	221.4	284.5	32.1	49.2	147.7	172.1	301.0	290.9		יוון	245
025		Luxembourg	LU	3.2	6.6	48.1	76.7	174.0	91.9	1.0	1.6	4.5	9.6	20.4	15.3		לוזמבורג	025
233		Latvia	LV	8.8	72.2	55.0	201.8	319.4	258.8	2.3	3.1	12.6	15.6	33.9	32.5		לטביה	233
234		Lithuania	LT	2.4	1.5	6.5	8.7	24.5	21.8	1.9	2.2	9.7	23.1	42.4	26.2		ליטא	234
255		Malta	MT	0.1	0.1	7.1	2.2	35.4	26.0	0.3	0.2	6.5	2.6	50.8	90.8		מלטה	255
244		Slovenia	SI	6.2	5.0	33.5	37.8	65.4	97.1	5.7	6.6	55.2	61.0	125.2	100.3		סלובניה	244
272		Slovakia	SK	7.7	5.6	27.9	25.8	49.4	17.2	1.0	2.1	8.0	10.2	28.5	18.5		סלובקיה	272
260		Spain	ES	65.9	74.8	393.8	468.7	959.1	811.9	98.1	146.7	417.7	630.1	1108.0	1106.0		ספרד	260
265		Poland	PL	12.4	13.9	72.1	70.8	152.8	127.7	11.7	29.2	115.6	155.2	287.2	237.1		פולין	265
125		Portugal	PT	9.7	9.3	43.0	69.1	114.2	126.2	10.2	8.0	54.9	55.3	98.9	90.9		פורטוגל	125
130		Finland	FI	28.6	26.3	152.4	162.1	370.2	339.5	14.0	17.8	57.4	88.9	169.1	155.3		פינלנד	130
271		Czech Republic	CZ	21.8	15.5	77.8	88.4	165.6	136.4	13.6	17.0	67.7	83.0	161.6	132.6		צ'כיה	271
030		France	FR	104.8	165.4	652.1	920.3	1889.2	1480.9	98.7	119.0	554.4	670.6	1298.0	1313.2		צרפת	030
378		Cyprus	CY	3.4	3.6	23.2	46.9	68.7	65.1	32.0	76.6	229.9	455.9	880.5	623.1		קפריסין	378
275		Romania	RO	9.4	12.3	46.1	58.4	106.2	119.2	10.2	15.2	67.5	125.6	230.6	240.0		רומניה	275
135		Sweden	SE	45.0	53.5	242.4	359.0	693.6	556.0	7.8	17.9	56.6	95.9	181.9	171.5		שוודיה	135
		European Free Trade Association (E.F.T.A.)		265.8	397.4	1504.4	1972.7	4043.7	2960.6	57.8	111.4	506.8	841.1	1289.5	1104.7		האיגוד האירופי לסחר חופשי (אפט"א)	
107		Iceland	IS	0.7	0.8	5.3	12.6	17.7	13.3	0.2	0.4	1.3	2.1	3.5	4.9		איסלנד	107
120		Norway	NO	3.6	6.4	25.5	28.6	52.4	65.0	5.6	6.8	35.4	46.4	75.6	63.7		נורבגיה	120
140		Switzerland	CH	261.5	390.2	1473.6	1931.5	3973.6	2882.3	52.0	104.2	470.1	792.6	1210.4	1036.1		שווייץ	140
		Other European Countries		186.8	282.6	910.8	1683.0	3104.1	3184.7	194.8	290.5	1031.3	1530.5	2812.6	2095.1		יתר ארצות אירופה	
222		Ukraine	UA	6.8	11.3	45.3	109.9	201.5	154.8	4.7	17.2	34.8	106.3	195.1	161.9		אוקראינה	222
241		Bosnia and Herzegovina	BA	0.0	0.0	0.1	0.2	1.5	2.1	0.2	0.2	1.4	1.0	4.2	1.6		בוסנייה	241
227		Belarus	BY	0.4	1.3	1.3	3.4	5.6	5.2	1.2	1.9	8.6	11.2	22.7	14.4		בלרוס	227
230		Gibraltar	GL	0.0	0.0	1.3	1.8	2.7	1.1	0.2	0.1	0.2	34.6	35.2	25.3		גיברלטר	230
324		Turkey	TR	118.8	173.3	668.5	989.5	1825.3	1606.9	110.3	170.8	545.9	875.8	1609.9	1195.8		טורקיה	324
236		Moldova Republic	MD	0.1	0.1	0.6	1.3	2.2	1.1	0.6	7.3	4.8	13.8	25.8	10.3		מולדובה	236
243		Macedonia	MK	0.0	0.3	0.2	0.4	0.8	0.4	0.9	1.3	8.7	10.1	20.8	5.9		מקדוניה	243
242		Croatia	HR	0.2	0.0	13.8	4.6	5.9	3.1	5.8	2.3	18.0	11.7	23.2	27.8		קרואטיה	242
229		Russian Federation	RU	60.2	94.7	177.2	565.0	1047.1	1398.8	67.9	73.8	365.4	425.3	777.0	611.5		רוסיה	229
299		Other Countries		0.3	1.6	2.5	6.9	11.5	11.2	3.0	15.6	43.5	40.7	98.7	40.6		יתר הארצות	299
		Asia		847.2	1233.1	4530.2	6842.9	13712.8	11908.8	805.9	1236.5	3926.9	6376.0	12182.9	9771.3		אסיה	
221		Uzbekistan	UZ	0.1	0.3	0.3	1.0	2.7	2.0	0.9	2.9	6.3	17.4	23.3	25.6		אוזבקיסטן	221
223		Azerbaijan	AZ	0.0	0.0	0.2	0.1	0.3	0.2	2.3	10.7	82.3	80.6	129.4	82.6		אזרבייג'ן	223
303		Indonesia	ID	9.0	29.2	42.6	113.4	293.4	89.3	1.1	1.5	5.2	7.7	15.8	17.6		אינדונזיה	303
226		Armenia	AM	0.0	0.0	0.0	1.2	1.6	14.8	0.2	2.9	2.8	7.8	27.1	34.6		ארמניה	226
228		Georgia	GE	0.1	0.4	0.9	1.1	2.0	2.3	1.9	7.6	21.6	98.6	132.0	54.1		גרוזיה	228
315		India	IN	96.4	164.3	485.4	875.4	1648.8	1689.6	136.3	227.3	741.8	1101.6	2361.3	1613.7		הודו	315
318		Hong Kong	HK	91.7	196.4	491.1	928.0	1813.7	1747.5	269.9	476.5	1224.7	2388.6	4140.8	3118.4		הונג קונג	318
321		Vietnam	VN	6.8	8.3	33.7	69.3	140.0	64.2	21.0	2.6	55.6	47.4	79.4	70.9		וייטנאם	321
232		Turkmenistan	TM	0.0	0.0	0.5	0.1	0.2	0.8	0.8	0.0	0.8	1.0	1.7	2.2		טורקמניסטן	232
363		Taiwan	TW	42.1	62.7	253.8	361.7	712.4	708.7	45.5	55.0	180.7	231.3	473.0	563.0		טייוון	363
327		Japan	JP	145.2	197.3	709.2	1229.4	2226.7	1882.1	41.0	62.0	255.0	385.1	883.0	769.6		יפן	327
328		Jordan	JO	5.3	9.0	22.0	40.0	105.9	54.4	14.7	17.3	109.7	157.0	288.5	250.7		ירדן	328
312		Myanmar	MM	0.0	0.0	0.0	0.5	0.6	0.8	0.0	0.2	2.0	0.8	1.3		מיאנמר	312	
336		Malaysia	MY	6.4	6.8	37.1	45.1	100.6	63.6	1.2	1.4	4.6	18.3	30.2	70.4		מלזיה	336
345		China (1)	CN	272.0	348.7	1597.5	1970.1	4244.0	3476.9	97.0	134.7	412.6	587.7	1293.5	1040.6		סין (1)	345
350		Singapore	SG	45.5	46.3	217.5	271.6	552.5	558.4	37.6	57.6	186.6	266.0	538.8	416.3		סינגפור	350
369		Sri Lanka	LK	2.2	4.2	10.5	21.1	47.9										

Table D 1. - Trade Countries -Imports and Exports

לוח ד 1. - ארצות הסחר - יבוא ויצוא

Million \$													מיליוני דולרים				
סמל Code	Countries	ISO	Imports					Exports					ארצות	סמל Code			
			VI		I - VI		I - VI		VI		I - VI				יצוא		
			2009	2008	2009	2008	2008	2007	2009	2008	2009	2008				2008	2007
	America		604.5	766.7	3363.3	4929.7	9745.7	9504.2	1697.6	2358.9	8424.1	12257.6	23177.1	21267.0	יבוא	אמריקה	
	North America		572.0	725.5	3121.3	4375.2	8659.6	8340.5	1556.0	2106.3	7895.9	11208.0	21203.5	19910.9	יבוא	אמריקה הצפונית	
505	USA	US	543.6	676.8	2927.8	4096.2	8034.4	7848.9	1465.6	2021.5	7489.0	10638.2	19972.5	18906.8	יבוא	ארצות הברית	505
723	Mexico	MX	9.0	13.2	56.2	69.1	115.8	57.9	39.7	26.4	136.4	155.0	329.3	289.8	יבוא	מקסיקו	723
510	Canada	CA	19.4	35.5	137.3	209.9	509.4	433.7	50.7	58.4	270.5	414.8	901.7	714.3	יבוא	קנדה	510
	Central America		1.7	2.3	20.5	26.3	48.6	34.4	15.1	17.7	82.4	116.9	221.1	181.6	יבוא	אמריקה המרכזית	
611	El Salvador	SV	0.0	0.3	0.0	0.3	0.3	0.5	0.2	0.2	0.7	5.1	12.7	8.3	יבוא	אל-סלבדור	611
631	Bahamas	BS	0.0	0.0	0.0	0.0	0.0	0.2	0.0	0.0	0.0	0.1	0.4	0.5	יבוא	בהאמה, איי	631
621	Barbados	BB	0.0	0.0	0.0	0.0	0.0	0.0	0.1	0.1	0.6	1.0	1.7	3.6	יבוא	ברבדוס	621
625	Jamaica	JM	0.0	0.0	0.0	0.0	0.0	0.1	0.3	0.5	1.8	7.8	14.4	12.6	יבוא	ג'מייקה	625
613	Guatemala	GT	0.4	0.2	4.0	1.2	2.7	3.4	2.4	6.0	9.2	19.0	31.3	26.5	יבוא	גואטמלה	613
636	Haiti	HT	0.0	0.0	0.0	0.0	0.0	0.0	0.3	0.3	1.1	2.5	3.7	5.9	יבוא	האיטי	636
615	Honduras	HN	0.1	0.3	0.3	0.5	0.7	0.5	3.9	1.4	5.8	14.4	29.8	12.4	יבוא	הונדורס	615
627	Trinidad and Tabago	TT	0.0	0.0	0.0	0.0	0.0	0.0	0.3	0.2	1.8	1.0	2.4	3.8	יבוא	טרינידד וטובגו	627
650	Martinique	MQ	0.0	0.0	0.0	0.0	0.0	0.0	0.1	0.2	1.3	1.1	1.9	1.1	יבוא	מרטניק	650
617	Nicaragua	NI	0.1	0.0	0.2	0.0	0.0	0.0	1.0	0.2	3.0	3.3	5.3	4.8	יבוא	ניקרגואה	617
641	Panama	PA	0.6	1.2	7.9	17.2	32.6	9.8	0.5	1.1	7.7	5.7	17.0	18.1	יבוא	פנמה	641
619	Costa Rica	CR	0.1	0.1	1.8	0.9	2.0	2.4	2.2	3.0	20.0	24.0	43.0	35.3	יבוא	קוסטה ריקה	619
639	Dominican Republic	DO	0.2	0.0	0.4	1.0	1.0	0.9	1.4	2.1	7.6	11.0	22.1	23.5	יבוא	רפובליקה דומיניקנית	639
649	Other Countries		0.2	0.2	5.9	5.2	9.3	16.6	2.4	2.4	21.8	20.9	35.4	25.2	יבוא	יתר הארצות	649
	South America		30.8	38.9	221.5	528.2	1037.5	1129.3	126.5	234.9	445.8	932.7	1752.5	1174.5	יבוא	אמריקה הדרומית	
711	Uruguay	UY	2.9	3.3	24.6	32.2	80.3	68.6	0.6	0.7	3.9	4.3	19.3	8.3	יבוא	אורוגוואי	711
713	Ecuador	EC	0.2	0.4	2.0	2.1	4.5	3.5	1.9	5.5	11.3	21.9	41.3	31.7	יבוא	אקוודור	713
715	Argentina	AR	5.4	7.6	67.1	65.7	150.3	154.5	8.3	9.0	35.4	53.8	125.2	126.2	יבוא	ארגנטינה	715
717	Bolivia	BO	0.1	0.3	0.8	1.0	2.1	1.6	0.4	0.4	1.8	3.3	6.4	4.9	יבוא	בוליביה	717
719	Brazil	BR	16.8	22.1	97.9	125.6	297.2	270.7	64.6	193.3	237.4	670.3	1172.0	671.6	יבוא	ברזיל	719
721	Venezuela	VE	0.3	0.0	0.3	0.7	0.7	4.7	0.7	1.4	7.1	11.6	35.0	48.1	יבוא	ונצואלה	721
725	Paraguay	PY	0.9	0.6	7.9	7.4	20.1	22.7	0.1	0.6	2.8	6.2	18.2	10.8	יבוא	פרגוואי	725
727	Peru	PE	0.2	0.1	1.3	2.1	4.6	3.3	3.3	3.4	19.7	24.4	46.8	40.1	יבוא	פרו	727
731	Chile	CL	2.8	3.1	12.9	15.8	32.5	14.9	7.3	11.4	31.9	64.5	119.9	78.2	יבוא	צ'ילה	731
733	Colombia	CO	1.2	1.4	6.7	275.6	445.2	584.8	39.3	9.2	94.4	71.3	166.7	152.6	יבוא	קולומביה	733
799	Other Countries		0.0	0.0	0.0	0.0	0.0	0.0	0.0	0.0	0.1	1.1	1.7	2.0	יבוא	יתר הארצות	799
	Oceania		11.5	32.8	85.0	119.1	262.5	150.5	39.5	57.7	196.1	420.5	786.6	567.3	יבוא	אוקיאנייה	
805	Australia	AU	10.3	30.8	78.0	104.6	240.4	139.3	36.1	50.3	172.9	372.4	711.3	520.2	יבוא	אוסטרליה	805
810	New Zealand	NZ	1.2	2.0	6.6	14.2	21.8	10.8	2.8	3.9	21.6	42.4	67.8	43.6	יבוא	ניו זילנד	810
806	Papua New Guinea	PG	0.0	0.0	0.0	0.0	0.0	0.0	0.2	0.1	0.4	0.6	0.6	1.6	יבוא	פפואה גיניאה החדשה	806
807	Fiji	FJ	0.0	0.0	0.4	0.3	0.3	0.0	0.2	0.4	0.8	1.6	3.1	0.1	יבוא	פיג'י	807
899	Other Countries		0.0	0.0	0.0	0.0	0.0	0.4	0.2	3.0	0.4	3.5	3.8	1.8	יבוא	יתר הארצות	899
	Unclassified Countries		444.1	1087.1	2765.1	5990.7	11057.4	7890.9	249.2	167.1	1225.3	824.5	1826.9	2091.8	יבוא	ארצות בלתי מסווגות	900

(1) Since July 1997 the data on trade with Hong-Kong should be added to the data on China

(1) החל בחודש יולי 1997 יש לצרף לנתונים על סין את נתוני הסחר עם הונג קונג.

Table D 2. - Trade Countries -Imports and Exports, excl. Diamonds

לוח ד 2. - ארצות הסחר - יבוא ויצוא, ללא יהלומים

Million \$														מיליוני דולרים		
סמל Code	Countries	ISO	Imports						Exports						ארצות	סמל Code
			VI		I - VI		יבוא		VI		I - VI		יצוא			
			2009	2008	2009	2008	2008	2007	2009	2008	2009	2008	2008	2007		
	Grand Total		3452.2	4864.7	19340.3	28392.7	55808.5	46587.0	3280.2	4243.2	16702.6	21558.5	41941.3	35673.4	סך כולל	
	Europe		1670.2	2174.8	9185.2	12393.5	24371.0	20883.0	1116.1	1617.9	6192.4	9138.5	16777.7	14574.9	אירופה	
	European Union		1291.8	1666.7	7071.9	9625.4	18843.3	16550.3	911.4	1312.0	5103.9	7501.6	13801.9	12297.4	האיחוד האירופי	
105	Austria	AT	35.0	41.6	145.1	176.4	397.0	296.6	6.7	10.8	40.0	52.2	95.4	115.6	אוסטריה	105
005	Italy	IT	165.5	232.1	992.5	1327.7	2534.6	2295.0	126.2	155.4	551.3	921.4	1597.4	1203.0	איטליה	005
007	Ireland	IE	44.8	30.5	223.5	211.7	415.1	368.1	8.7	8.4	50.5	49.7	99.9	118.9	אירלנד	007
224	Estonia	EE	0.4	0.2	1.0	1.9	4.1	3.6	0.2	1.1	3.7	8.0	13.7	16.6	אסטוניה	224
215	Bulgaria	BG	3.9	4.4	19.4	24.5	49.3	57.2	2.7	4.5	21.0	29.2	54.1	49.7	בולגריה	215
010	Belgium	BE	112.5	127.7	544.0	707.9	1371.1	1272.0	55.4	114.8	418.2	714.0	1201.6	996.4	בלגיה	010
015	Germany	DE	269.8	358.3	1417.9	2093.1	3938.9	3481.7	115.0	163.3	671.7	1025.3	1901.7	1862.6	גרמניה	015
017	Denmark	DK	19.2	16.3	89.4	103.3	215.1	185.6	10.0	17.7	71.0	72.8	164.5	107.3	דנמרק	017
020	Netherlands	NL	148.7	207.3	881.9	1254.8	2465.3	2090.3	124.3	177.7	763.4	1077.2	2031.0	1606.3	הולנד	020
235	Hungary	HU	25.5	19.8	115.5	143.5	288.7	195.6	6.5	9.6	65.3	71.7	174.0	116.2	הונגריה	235
023	United Kingdom	GB	125.2	150.6	659.9	884.6	1765.7	1758.4	120.6	150.7	616.3	908.1	1619.8	1624.0	הממלכה המאוחדת	023
245	Greece	GR	12.3	13.7	101.5	108.1	221.2	284.5	31.6	49.1	146.4	168.9	294.3	284.7	יוון	245
025	Luxembourg	LU	3.2	6.6	48.1	76.7	174.0	91.9	1.0	1.6	4.5	9.6	20.4	15.3	לוכסמבורג	025
233	Latvia	LV	8.8	72.2	55.0	201.8	319.4	258.8	2.3	3.1	12.6	15.6	33.9	32.5	לטביה	233
234	Lithuania	LT	2.4	1.5	6.5	8.7	24.5	21.8	1.9	2.2	9.7	23.1	42.4	26.2	ליטא	234
255	Malta	MT	0.1	0.1	7.1	2.2	35.4	26.0	0.3	0.2	6.5	2.6	50.8	90.8	מלטה	255
244	Slovenia	SL	6.2	5.0	33.5	37.8	65.4	97.1	5.7	6.6	55.2	61.0	125.2	100.3	סלובניה	244
272	Slovakia	SK	7.7	5.6	27.9	25.8	49.4	17.2	1.0	2.1	8.0	10.2	28.5	18.5	סלובקיה	272
260	Spain	ES	65.9	74.8	393.7	468.7	958.9	811.9	97.6	145.3	414.8	624.2	1092.4	1079.2	ספרד	260
265	Poland	PL	12.4	13.9	72.1	70.8	152.8	127.7	11.6	29.2	115.0	154.8	284.9	236.6	פולין	265
125	Portugal	PT	9.7	9.3	43.0	69.1	114.2	126.2	10.2	8.0	54.9	55.3	98.9	90.9	פורטוגל	125
130	Finland	FI	28.6	26.3	152.4	162.1	370.2	339.5	13.9	17.6	56.8	88.2	167.8	154.1	פינלנד	130
271	Czech Republic	CZ	21.8	15.5	77.8	88.4	165.6	136.3	13.6	16.6	66.8	81.5	158.9	132.1	צ'כיה	271
030	France	FR	104.8	164.0	651.9	914.6	1882.0	1479.7	94.4	107.0	528.3	603.2	1162.6	1202.3	צרפת	030
378	Cyprus	CY	3.0	3.6	22.8	46.2	68.0	65.1	32.0	76.5	228.6	455.3	879.5	621.3	קפריסין	378
275	Romania	RO	9.4	12.3	46.1	56.0	103.8	108.4	10.2	15.2	67.5	123.6	228.6	226.6	רומניה	275
135	Sweden	SE	45.0	53.5	242.4	359.0	693.6	554.1	7.8	17.7	55.9	94.9	179.7	169.4	שוודיה	135
	European Free Trade Association (E.F.T.A.)		225.7	271.8	1285.9	1391.6	2903.6	2131.8	18.6	20.8	118.9	144.5	248.8	235.9	האיגוד האירופי לסחר חופשי (אפס"א)	
107	Iceland	IS	0.7	0.8	5.3	12.6	17.7	13.3	0.2	0.4	1.3	2.1	3.5	4.9	איסלנד	107
120	Norway	NO	3.6	6.4	25.5	28.6	52.4	65.0	5.3	6.6	34.4	45.5	73.7	61.4	נורבגיה	120
140	Switzerland	CH	221.4	264.6	1255.1	1350.4	2833.5	2053.5	13.1	13.8	83.2	96.9	171.6	169.6	שווייץ	140
	Other European Countries		152.7	236.3	827.4	1376.5	2624.1	2200.9	186.1	285.1	969.6	1492.4	2727.0	2041.6	יתר ארצות אירופה	
222	Ukraine	UA	6.8	11.1	44.2	107.3	198.0	151.9	4.7	16.0	33.0	101.0	182.1	146.4	אוקראינה	222
241	Bosnia and Herzegovina	BA	0.0	0.0	0.1	0.2	1.5	2.1	0.2	0.2	1.4	1.0	4.2	1.6	בוסנייה	241
227	Belarus	BY	0.0	1.3	0.9	3.4	5.6	5.2	1.2	1.9	8.6	11.2	22.7	14.4	בלרוס	227
230	Gibraltar	GL	0.0	0.0	1.3	1.8	2.7	1.1	0.2	0.1	0.2	34.6	35.2	25.3	גיברלטר	230
324	Turkey	TR	118.6	172.9	668.0	988.2	1823.2	1605.2	109.3	168.2	540.4	860.1	1586.4	1167.8	טורקיה	324
236	Moldova Republic	MD	0.1	0.1	0.6	1.3	2.2	1.1	0.6	7.3	4.8	13.8	25.8	10.3	מולדובה	236
243	Macedonia	MK	0.0	0.3	0.2	0.4	0.8	0.4	0.9	1.3	8.7	10.1	20.8	5.9	מקדוניה	243
242	Croatia	HR	0.2	0.0	13.8	4.6	5.9	3.1	5.8	2.3	18.0	11.7	23.2	27.8	קרואטיה	242
229	Russian Federation	RU	26.7	49.0	95.8	262.4	572.7	419.6	60.2	72.2	311.0	408.2	727.9	601.5	רוסיה	229
299	Other Countries		0.3	1.6	2.5	6.9	11.5	11.2	3.0	15.6	43.5	40.7	98.7	40.6	יתר הארצות	299
	Asia		743.9	978.9	4085.8	5708.1	11612.6	9653.8	475.1	637.5	2434.5	3197.4	6739.5	5335.3	אסיה	
221	Uzbekistan	UZ	0.1	0.3	0.3	1.0	2.7	2.0	0.9	2.7	6.3	17.2	23.1	25.6	אוזבקיסטן	221
223	Azerbaijan	AZ	0.0	0.0	0.2	0.1	0.3	0.2	2.3	10.7	82.3	80.6	128.3	82.6	אזרבייג'ן	223
303	Indonesia	ID	9.0	29.2	42.6	113.4	293.4	89.3	1.1	1.5	5.2	7.7	15.8	17.6	אינדונזיה	303
226	Armenia	AM	0.0	0.0	0.0	0.3	0.4	0.6	0.2	0.1	2.5	1.6	9.6	4.3	ארמניה	226
228	Georgia	GE	0.1	0.4	0.9	1.1	2.0	2.3	1.9	7.6	21.6	98.6	132.0	54.1	גרוזיה	228
315	India	IN	45.9	57.0	248.7	321.6	673.6	558.5	79.1	127.0	495.3	515.5	1377.9	725.1	הודו	315
318	Hong Kong	HK	46.6	67.6	319.8	437.0	881.6	809.2	33.1	43.6	163.4	203.1	409.4	356.4	הונג קונג	318
321	Vietnam	VN	6.8	8.3	33.7	69.3	140.0	64.2	21.0	2.6	55.6	47.4	79.4	70.9	ויאטנאם	321
232	Turkmenistan	TM	0.0	0.0	0.5	0.1	0.2	0.8	0.8	0.0	0.8	1.0	1.7	2.2	טורקמניסטן	232
363	Taiwan	TW	42.0	62.5	252.8	360.2	709.7	708.3	43.7	52.5	172.3	218.3	450.7	537.7	טייוון	363
327	Japan	JP	144.8	195.1	706.0	1221.8	2210.2	1871.8	36.3	54.9	222.3	335.9	796.3	669.9	יפן	327
328	Jordan	JO	5.3	9.0	22.0	40.0	105.9	54.4	14.2	16.9	108.9	154.0	283.1	249.9	ירדן	328
312	Mayanmar	MM	0.0	0.0	0.0	0.5	0.6	0.8	0.0	0.2	2.0	0.8	1.3	1.3	מיאנמר	312
336	Malaysia	MY	6.4	6.8	37.1	45.1	100.6	63.6	1.2	1.4	4.6	18.3	30.2	70.4	מלזיה	336
345	China	CN	268.5	347.6	1586.5	1966.6	4235.3	3472.8	86.8	116.0	358.0	490.6	1100.9	869.5	סין	345
350	Singapore	SG	45.5	44.7	211.3	265.9	540.7	550.2	34.4	56.0	168.2	229.0	472.3	370.2	סינגפור	350
369	Sri Lanka	LK	0.4	0.5	2.2	3.7	7.9	10.3	0.7	2.7	8.8	14.2	24.8	24.8	סרי לנקה	369
360	Philippines	PH	4.7	7.4	34.1	43.1	86.7	85.0	13.4	11.0	61.4	78.6	151.0	204.2	פיליפינים	360
372	South Korea	KR	82.4	103.6	411.4	573.8	1102.9	945.1	81.4	73.1	342.2	484.9	809.3	730.0	קוריאה הדרומית	372
237	Kazakhstan	KZ	0.6	0.0	0.9	3.3	3.4	3.3	4.0	20.1	18.1	46.9	158.6	99.6	קזחסטן	237
387	Thailand	TH	32.9	37.7	164.4	231.6	445.7	343.0								

Table D 2. - Trade Countries -Imports and Exports, excl. Diamonds

לוח ד 2. - ארצות הסחר - יבוא ויצוא, ללא יהלומים

מיליון דולרים		מיליון \$													מל		
מל	Code	Countries	ISO	Imports					Exports					ארצות	מל		
				VI		I - VI			VI		I - VI						
				2009	2008	2009	2008	2008	2009	2008	2009	2008	2008			2007	
		Africa		63.1	49.0	249.1	303.3	733.6	336.3	142.8	116.9	514.8	631.1	1343.3	1081.8	אפריקה	
401	Uganda	UG	0.7	0.6	4.3	4.8	7.2	7.6	1.1	0.7	4.5	5.8	11.6	11.1	אוגנדה	401	
410	Ethiopia	ET	2.4	2.4	18.0	26.2	46.2	26.3	1.4	0.6	6.7	9.5	18.4	12.1	אתיופיה	410	
412	Botswana	BW	0.0	0.0	0.0	0.0	0.0	0.0	7.4	7.4	30.5	55.2	79.9	39.6	בוטסואנה	412	
416	Gabon	GA	0.0	0.0	0.0	0.0	0.0	0.2	0.1	0.5	1.3	1.0	2.9	1.1	גבון	416	
420	Ghana	GH	0.2	0.1	0.6	0.8	2.0	3.4	0.9	3.2	36.5	15.1	33.6	21.9	גנה	420	
482	Dem. Rep. of the Congo	CD	0.0	0.0	0.0	0.0	0.0	0.0	0.0	0.0	0.0	0.0	0.2	0.4	דרום רפ. של קונגו	482	
428	South Africa	ZA	32.4	30.5	126.3	200.8	494.2	158.7	18.1	41.3	90.1	155.1	336.4	274.8	דרום אפריקה	428	
496	Zimbabwe	ZW	0.0	0.0	0.0	0.0	0.0	0.5	0.1	0.1	0.5	1.4	2.0	2.5	זימבבווה	496	
434	Zambia	ZM	0.0	0.2	0.0	0.5	1.6	0.8	0.3	0.1	1.1	0.7	1.6	1.8	זמבייה	434	
436	Cote d'Ivoire	CI	1.2	1.1	4.4	3.4	8.9	5.0	1.2	1.4	5.2	5.4	9.3	7.9	חוף השנהב	436	
442	Tanzania	TZ	0.4	0.5	3.4	3.1	6.2	7.1	0.6	2.6	5.2	8.9	21.2	15.1	טנזניה	442	
454	Mauritius	MU	0.0	0.0	0.2	0.4	0.8	1.6	0.5	0.6	1.5	4.3	9.9	8.6	מאוריציוס	454	
462	Egypt	EG	22.9	9.7	77.9	47.3	132.4	94.3	32.8	12.2	76.7	75.1	139.0	153.6	מצרים	462	
464	Morocco	MA	0.5	0.6	1.9	2.0	3.9	2.7	1.3	1.6	9.6	9.1	20.6	16.6	מרוקו	464	
468	Nigeria	NG	0.3	0.0	0.8	0.0	1.4	0.2	37.8	16.1	112.7	113.4	304.3	205.1	ניגריה	468	
429	Namibia	NA	0.0	0.1	0.1	0.4	0.5	1.0	0.8	1.4	1.5	19.2	22.0	77.2	נמיביה	429	
474	Senegal	SN	0.1	0.1	0.5	0.6	0.7	0.6	0.2	0.3	0.7	2.8	8.8	7.1	סנגל	474	
486	Congo	CG	0.0	0.0	0.0	0.0	0.4	0.7	0.5	0.2	4.9	4.1	12.2	11.0	קונגו	486	
488	Cameroon	CM	0.0	0.1	0.1	0.3	0.5	0.2	1.3	5.4	13.8	9.3	18.2	8.9	קמרון	488	
490	Kenya	KE	1.9	2.4	8.9	10.0	23.5	22.0	8.8	9.3	35.6	59.1	115.0	97.3	קניה	490	
492	Reunion	RE	0.0	0.0	0.0	0.0	0.0	0.0	0.0	0.3	0.7	0.6	1.3	0.8	ראוניון	492	
494	Rwanda	RW	0.0	0.3	0.0	0.5	0.6	0.2	1.1	1.1	3.4	8.9	19.7	5.9	רואנדה	494	
499	Other Countries		0.1	0.3	1.7	2.2	2.6	3.2	26.5	10.5	72.1	67.1	155.2	101.4	יתר הארצות	499	
		America		562.9	668.9	3179.2	4367.3	8760.9	8564.2	1272.5	1663.8	6213.5	7499.4	14708.4	12233.2	אמריקה	
		North America		530.4	628.4	2938.8	3816.6	7679.2	7412.3	1131.0	1411.6	5688.0	6452.6	12741.2	10883.8	אמריקה הצפונית	
505	USA	US	502.0	579.8	2746.0	3549.5	7067.3	6921.9	1045.0	1332.8	5307.7	5922.7	11601.2	9967.7	ארצות הברית	505	
723	Mexico	MX	9.0	13.2	56.2	69.1	115.8	57.9	39.7	26.4	133.4	155.0	329.2	289.7	מקסיקו	723	
510	Canada	CA	19.4	35.4	136.6	198.0	496.1	432.5	46.3	52.4	246.9	374.9	810.8	626.4	קנדה	510	
		Central America		1.7	2.3	19.2	25.2	47.1	33.5	15.1	17.5	81.1	116.4	219.7	181.0	אמריקה המרכזית	
611	El Salvador	SV	0.0	0.3	0.0	0.3	0.3	0.5	0.2	0.2	0.7	5.1	12.7	8.3	אל סלבדור	611	
631	Bahamas	BS	0.0	0.0	0.0	0.0	0.0	0.2	0.0	0.0	0.0	0.1	0.4	0.5	באהמה, אי	631	
621	Barbados	BB	0.0	0.0	0.0	0.0	0.0	0.0	0.1	0.1	0.6	1.0	1.7	3.6	ברבדוס	621	
625	Jamaica	JM	0.0	0.0	0.0	0.0	0.0	0.1	0.3	0.5	1.8	7.8	14.4	12.6	ג'מייקה	625	
613	Guatemala	GT	0.4	0.2	4.0	1.2	2.7	3.4	2.4	6.0	9.2	19.0	31.3	26.5	גואטמלה	613	
636	Haiti	HT	0.0	0.0	0.0	0.0	0.0	0.0	0.3	0.3	1.1	2.5	3.7	5.9	האיטי	636	
615	Honduras	HN	0.1	0.3	0.3	0.5	0.7	0.5	3.9	1.4	5.8	14.4	29.8	12.4	הונדורס	615	
627	Trinidad and Tabago	TT	0.0	0.0	0.0	0.0	0.0	0.0	0.3	0.2	1.8	1.0	2.4	3.8	טרינידד וטובגו	627	
650	Martinique	MQ	0.0	0.0	0.0	0.0	0.0	0.0	0.1	0.2	1.3	1.1	1.9	1.1	מרטניק	650	
617	Nicaragua	NI	0.1	0.0	0.2	0.0	0.0	0.0	1.0	0.2	3.0	3.3	5.3	4.8	ניקרגואה	617	
641	Panama	PA	0.6	1.2	6.6	16.1	31.1	8.9	0.5	0.9	6.4	5.2	15.6	17.5	פנמה	641	
619	Costa Rica	CR	0.1	0.1	1.8	0.9	2.0	2.4	2.2	3.0	20.0	24.0	43.0	35.3	קוסטה ריקה	619	
639	Dominican Republic	DO	0.2	0.0	0.4	1.0	1.0	0.9	1.4	2.1	7.6	11.0	22.1	23.5	רפובליקה דומיניקנית	639	
649	Other Countries		0.2	0.2	5.9	5.2	9.3	16.6	2.4	2.4	21.8	20.9	35.4	25.2	יתר הארצות	649	
		South America		30.8	38.2	221.2	525.5	1034.6	1118.4	126.4	234.7	444.4	930.4	1747.5	1168.4	אמריקה הדרומית	
711	Uruguay	UY	2.9	3.3	24.6	32.2	80.3	68.6	0.6	0.7	3.9	4.3	19.3	8.3	אורוגוואי	711	
713	Ecuador	EC	0.2	0.4	2.0	2.1	4.5	3.5	1.9	5.5	11.3	21.9	41.3	31.7	אקוודור	713	
715	Argentina	AR	5.4	7.6	67.0	65.7	150.3	154.5	8.3	9.0	35.4	53.7	124.9	126.1	ארגנטינה	715	
717	Bolivia	BO	0.1	0.3	0.8	1.0	2.1	1.6	0.4	0.4	1.8	3.3	6.4	4.9	בוליביה	717	
719	Brazil	BR	16.8	21.4	97.7	122.9	294.3	263.4	64.5	193.1	236.5	668.4	1168.1	666.2	ברזיל	719	
721	Venezuela	VE	0.3	0.0	0.3	0.7	0.7	1.1	0.7	1.4	7.0	11.4	34.5	47.9	ונצואלה	721	
725	Paraguay	PY	0.9	0.6	7.9	7.4	20.1	22.7	0.1	0.6	2.8	6.2	18.2	10.8	פרגוואי	725	
727	Peru	PE	0.2	0.1	1.3	2.1	4.6	3.3	3.3	3.4	19.7	24.4	46.8	40.1	פרו	727	
731	Chile	CL	2.8	3.1	12.9	15.8	32.5	14.9	7.3	11.4	31.5	64.4	119.6	77.8	צ'ילה	731	
733	Colombia	CO	1.2	1.4	6.7	275.6	445.2	584.8	39.3	9.2	94.4	71.3	166.7	152.6	קולומביה	733	
799	Other Countries		0.0	0.0	0.0	0.0	0.0	0.0	0.0	0.0	0.1	1.1	1.7	2.0	יתר הארצות	799	
		Oceania		11.0	23.1	84.5	93.2	220.7	132.8	34.0	50.8	169.5	354.8	679.2	471.7	אוקיאניה	
805	Australia	AU	9.8	21.1	77.5	78.7	198.6	121.6	30.7	43.6	147.0	307.7	606.2	427.0	אוסטרליה	805	
810	New Zealand	NZ	1.2	2.0	6.6	14.2	21.8	10.8	2.7	3.7	20.9	41.4	65.5	41.2	ניו זילנד	810	
806	Papua New Guinea	PG	0.0	0.0	0.0	0.0	0.0	0.0	0.2	0.1	0.4	0.6	0.6	1.6	פפואה גיניאה החדשה	806	
807	Fiji	FJ	0.0	0.0	0.4	0.3	0.3	0.0	0.2	0.4	0.8	1.6	3.1	0.1	פיג'י	807	
899	Other Countries		0.0	0.0	0.0	0.0	0.0	0.4	0.2	3.0	0.4	3.5	3.8	1.8	יתר הארצות	899	
		Unclassified													ארצות בלתי מסווגות		
900	Countries		401.1	970.0	2556.5	5527.3	10109.7	7016.9	239.7	156.3	1177.9	737.3	1693.2	1977.3	900		

(1) Since July 1997 the data on trade with Hong-Kong should be added to the data on China

(1) החל בחודש יולי 1997 יש ליצרף לנתונים על סין את נתוני הסחר עם הונג קונג.

Table D 3. - Trade Countries,
by Countries and Country Group ⁽¹⁾

לוח ד 3. - ארצות הסחר,
לפי ארצות וקבוצת ארצות ⁽¹⁾

Million \$										מיליוני דולרים	
Imports					Exports						
יתר ארצות	אסיה	ארצות הברית	האיחוד האירופי	סך הכל	יתר ארצות	אסיה	ארצות הברית	האיחוד האירופי	סך הכל		
Other Countries	Asia	USA	European Union	Grand Total	Other Countries	Asia	USA	European Union	Grand Total		
Original data										נתונים מקוריים	
1,639.1	978.8	579.4	1,665.5	4,862.8	960.9	637.5	1,332.8	1,312.0	4,243.2	VI	2008
1,894.3	1,139.7	604.4	1,803.2	5,441.6	1,006.3	717.8	912.4	1,271.6	3,908.1	VII	
1,753.6	948.7	732.7	1,610.0	5,044.9	851.5	612.1	1,051.4	1,000.8	3,515.8	VIII	
1,568.6	1,034.8	565.0	1,430.4	4,598.8	849.5	618.4	952.9	1,189.1	3,609.9	IX	
1,496.9	972.4	534.7	1,374.7	4,378.7	641.8	486.7	810.0	836.8	2,775.3	X	
1,193.5	924.5	608.6	1,512.0	4,238.6	771.4	579.8	986.1	979.1	3,316.4	XI	
867.2	859.9	468.4	1,457.0	3,652.4	725.8	510.5	965.7	1,022.9	3,224.9	XII	
920.4	757.1	416.3	1,183.1	3,276.8	565.9	347.3	832.4	885.0	2,630.6	I	2009
793.3	670.4	490.2	1,116.5	3,070.3	560.7	325.2	742.7	789.2	2,417.8	II	
966.9	709.6	459.3	1,297.0	3,432.7	620.9	466.3	916.7	973.5	2,977.4	III	
918.3	582.0	337.7	1,062.7	2,900.7	486.6	390.0	783.3	734.0	2,393.9	IV	
922.1	622.6	392.5	1,120.0	3,057.2	784.3	430.6	987.6	800.2	3,002.7	V	
911.4	743.9	452.2	1,291.7	3,399.2	848.7	475.1	1,045.0	911.4	3,280.2	VI	
Seasonally adjusted data										נתונים מנוכי עונתיים	
1,577.5	1,011.9	596.8	1,709.0		847.2	586.5	1,205.9	1,207.3		VI	2008
1,738.9	1,086.4	634.3	1,700.4		887.4	667.2	944.5	1,277.8		VII	
1,601.5	933.3	754.0	1,643.5		874.3	630.1	1,009.6	1,196.3		VIII	
1,610.7	1,038.2	587.0	1,585.0		840.9	562.2	881.5	1,254.9		IX	
1,440.4	1,046.6	583.8	1,448.7		719.3	575.9	976.4	981.1		X	
1,386.1	974.9	610.4	1,501.3		797.8	581.5	922.6	1,008.5		XI	
888.0	853.1	423.3	1,335.2		699.2	426.1	861.5	983.0		XII	
1,032.3	797.2	438.1	1,287.7		616.9	411.5	889.2	903.4		I	2009
935.6	697.0	503.1	1,182.0		624.5	385.7	887.3	814.2		II	
985.3	700.4	416.8	1,186.5		581.5	441.6	848.1	828.0		III	
924.7	683.8	390.5	1,191.9		506.0	433.2	909.4	778.1		IV	
848.6	635.7	395.5	1,120.2		769.0	422.0	953.3	760.1		V	
876.6	677.4	436.4	1,191.7		750.3	420.1	954.1	814.4		VI	
Trend data - Million \$										נתוני מגמה - מיליוני דולרים	
1,637.1	1,028.0	615.9	1,656.5		843.4	579.6	964.9	1,203.7		VI	2008
1,625.4	1,033.9	619.7	1,645.6		840.2	581.8	962.9	1,196.8		VII	
1,587.0	1,027.8	614.6	1,618.1		826.5	574.6	956.9	1,176.4		VIII	
1,520.8	1,007.9	598.7	1,573.9		802.4	557.7	946.6	1,140.9		IX	
1,430.8	974.2	572.6	1,515.1		770.6	532.7	933.2	1,091.4		X	
1,325.0	928.9	539.4	1,446.4		735.9	503.2	919.1	1,032.3		XI	
1,214.0	875.9	503.6	1,374.6		705.0	473.7	907.3	969.9		XII	
1,108.8	820.5	469.9	1,306.9		684.2	448.4	899.8	910.7		I	2009
1,019.1	768.2	442.2	1,249.4		676.8	429.9	898.6	860.3		II	
951.7	723.8	423.4	1,206.6		682.6	419.4	903.5	822.6		III	
908.1	690.4	413.6	1,179.7		698.0	415.7	913.2	798.8		IV	
885.1	669.3	411.3	1,167.4		716.8	416.7	925.4	787.6		V	
877.1	659.5	413.7	1,166.0		733.4	420.1	937.2	785.9		VI	
Trend data - Percent change ⁽²⁾										נתוני מגמה - אחוז השינוי ⁽²⁾	
-0.7	0.6	0.6	-0.7		-0.4	0.4	-0.2	-0.6		VII	2008
-2.4	-0.6	-0.8	-1.7		-1.6	-1.2	-0.6	-1.7		VIII	
-4.2	-1.9	-2.6	-2.7		-2.9	-2.9	-1.1	-3.0		IX	
-5.9	-3.3	-4.4	-3.7		-4.0	-4.5	-1.4	-4.3		X	
-7.4	-4.6	-5.8	-4.5		-4.5	-5.5	-1.5	-5.4		XI	
-8.4	-5.7	-6.6	-5.0		-4.2	-5.9	-1.3	-6.0		XII	
-8.7	-6.3	-6.7	-4.9		-3.0	-5.3	-0.8	-6.1		I	2009
-8.1	-6.4	-5.9	-4.4		-1.1	-4.1	-0.1	-5.5		II	
-6.6	-5.8	-4.3	-3.4		0.9	-2.4	0.5	-4.4		III	
-4.6	-4.6	-2.3	-2.2		2.3	-0.9	1.1	-2.9		IV	
-2.5	-3.1	-0.6	-1.0		2.7	0.2	1.3	-1.4		V	
-0.9	-1.5	0.6	-0.1		2.3	0.8	1.3	-0.2		VI	

(1) Excl. aircraft, ships and diamonds.

(2) Percent change on previous period.

(1) ללא אניות, מטוסים ויהלומים.
(2) השינוי באחוזים, כל תקופה לעומת קודמתה.