

PRESS RELEASE

info@cbs.gov.il

http://www.cbs.gov.il

FAX. 02-652 1340

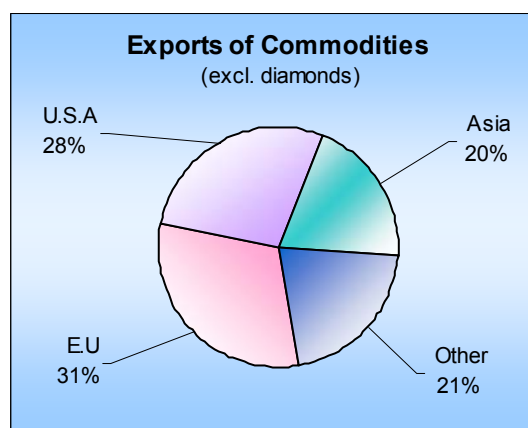
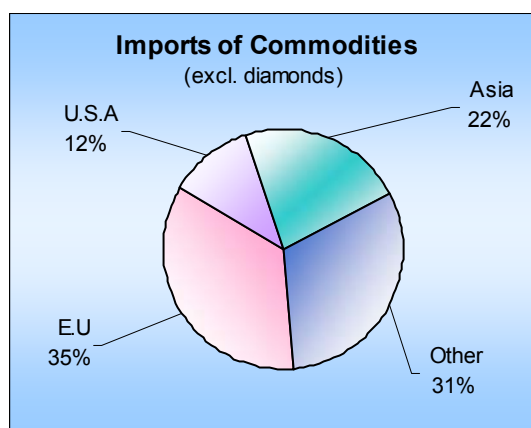
Jerusalem, July 18, 2010
/2010

Previous Press Release on Foreign Trade appeared on June 20, 2010

Israel's Foreign Trade by Country – June 2010

- Trend data point to a drop of 5.9%, at an annual rate, in import of goods from E.U. countries
- Trade with Asian countries shows a surplus of \$0.6 billion in January-June 2010

In June 2010, **import of goods** (gross) totaled \$5.0 billion, **exports of goods** (gross) totaled \$5.2 billion and the **trade surplus** totaled \$0.2 billion.



The above is based on **temporary data** regarding goods that cleared Customs, not including trade between Israel and the Palestinian Authority.

Main Trading Country Groups (in US million dollars)	Imports		Exports		Trade Balance	
	January-June		January-June		January-June	
	2010	2009	2010	2009	2010	2009
Total (gross)	28,347.1	21,284.9	29,052.6	21,853.8	705.5	568.9
European Union	9,922.7	7,873.8	7,811.9	5,954.2	-2,110.8	-1,919.6
U.S.A.	3,137.8	2,927.8	9,245.9	7,437.6	6,108.1	4,509.8
Asia	6,272.8	4,533.1	6,863.2	3,924.4	590.4	-608.7
Other Countries	9,013.8	5,950.2	5,131.6	4,537.6	-3,882.2	-1,412.6

Written by Helen Brusilovsky

For explanations and clarifications regarding the contents of this Press Release,
Please contact the Press Relations Unit, at 02-652 7845

The above is based on **temporary data** regarding goods that cleared Customs, not including trade between Israel and the Palestinian Authority. The data do not include import and export of services that include, among others, software. Data on all exports and imports of goods and services are published as part of the Balance of Payments, every quarter. Imports are valued c.i.f., and exports are valued f.o.b.

Development of trade in goods in June 2010, compared with May, was influenced by changes in the value of the U.S.A. Dollar against other currencies in which **import and export** transactions are conducted. Compared to the Euro the U.S.A. Dollar point to a rise of 3.1%, compared to the UK Pound the U.S.A. Dollar point to a drop of 0.5%, compared to the Japanese Yen the U.S.A. Dollar rise of 1.4% and compared to the Swiss Franc rose by 0.1%. It should be noted that in June the U.S.A. Dollar point to a rise of 1.8% against the Israeli Shekel.

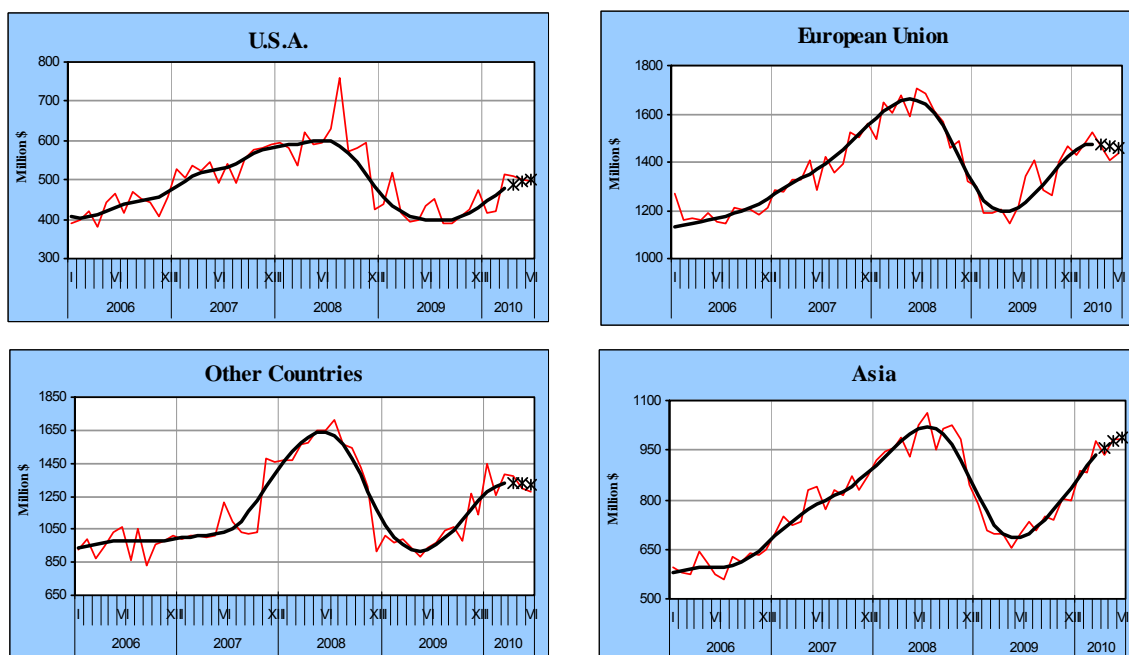
Trade Balance

The trade balance (excluding diamonds) shows a deficit of \$0.5 billion in June 2010 (\$0.3 billion in the same month of 2009). The trade balance (excluding diamonds) by main country groups shows a surplus of \$0.5 billion with USA, a deficit of \$0.2 billion with Asian countries, a deficit of \$0.3 billion with EU countries and a deficit of \$0.5 billion with Other Countries group.

Imports of goods

The trend data calculated by the Central Bureau of Statistics, seasonally adjusted and adjusted for irregular elements, point to a rise of **import of goods** (excluding diamonds) of 6.6%, at an annual rate, during April -June 2010.

Trend data by main country groups indicates that imports from **EU countries** point to a drop of 5.2%, at an annual rate, during April -June 2010. Imports from **USA** point to a rise of 20.7%, imports from **Asia** point to a rise of 25.4% and imports from **Other Countries** point to a drop of 1.6% during the last three months, at an annual rate.

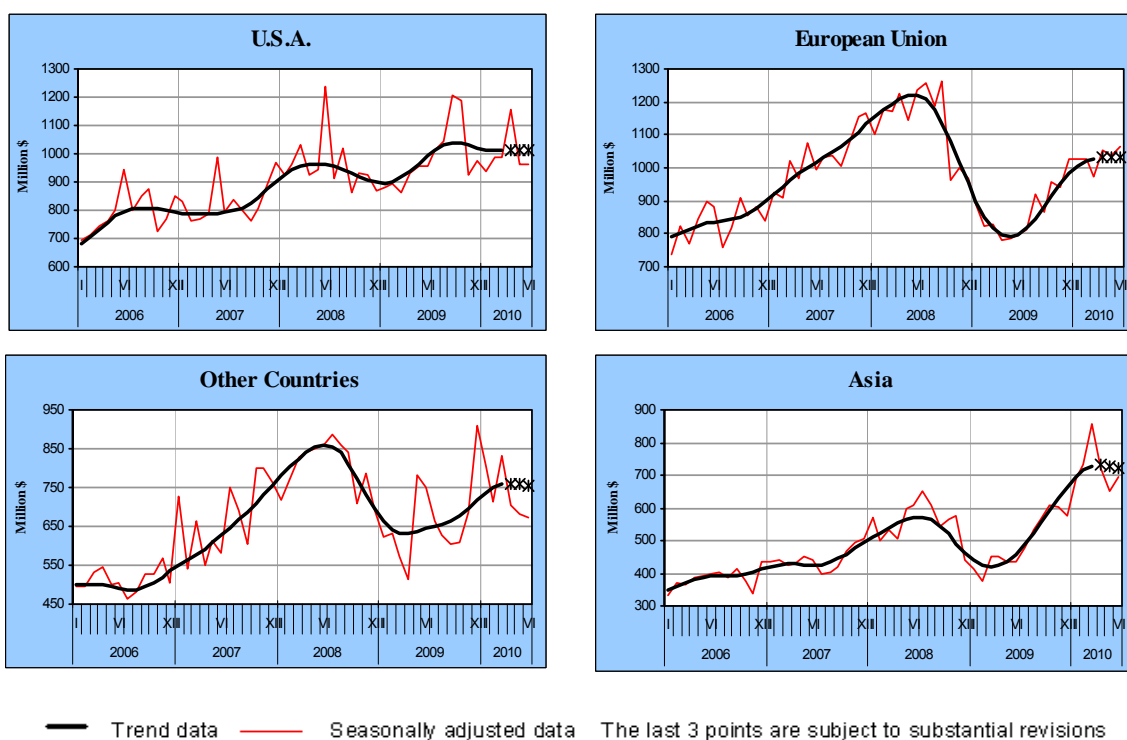


— Trend data — Seasonally adjusted data The last 3 points are subject to substantial revisions

Exports of goods

The **trend data** calculated by the Central Bureau of Statistics, seasonally adjusted and adjusted for irregular elements, point to a drop of **export of goods** (excluding diamonds) of 11.0%, at an annual rate, during March -May 2010.

Trend data by main country groups indicates that exports to **USA** point to a rise of 0.1%, at an annual rate, during March -May 2010. Exports to **EU countries** point to a rise of 0.6%; exports to **Asia** point to a drop of 1.2% and exports to **Other Countries** group point to a drop of 0.6% during the last three months.



Next Press Release on Israel's Foreign Trade will appear on August 18, 2010.

Related links and publications

Definitions and explanations

“Foreign Trade Statistics Monthly”

“Israel’s Foreign Trade” – Press Release

“Foreign Trade Price Indices” – Press Release

“Imports by Country of Origin” – Press Release

“Foreign Exchange Rates” – Press Release (Hebrew only)

“Trade Balance by Technological Intensity” – Press Release

“Exports by Country and Industry, 2008” – Press Release

“Foreign Trade of Israel” – Statilite Series No 41

“Foreign Trade of Israel- Selected countries 2005” Statilite Series No 66

“Israel’s Foreign Trade-2008” (Presentation- Internet only)

Exports, by Commodities and Countries, 2008-2009 (Internet only)

Exports, by Commodities and Countries, 1996-2007 (CD only)

Imports, by Commodities and Countries, 2007-2009 (Internet only)

Imports, by Commodities and Countries, 2007 (CD)

Imports, by Commodities and Countries, 2002-2006 (CD only)

Imports, by Commodities and Countries, 1996-2001 (CD only)

DEFINITIONS AND EXPLANATIONS

The Israel's Central Bureau of Statistics publishes monthly data on imports and exports of goods classified according to international standards. Imports and exports data is one of the earliest economic indicators published every month.

Imports and exports of goods are one of the basic components of balance of payments and national accounts. Imports and exports data are mainly used by:

1. Balance of payments compilers – current transactions with the rest of the world.
2. National accounts compilers – export and imports of goods and services and income paid abroad, estimation of private consumption expenditure, estimation of changes in inventories, estimation of the gross product of the diamonds sector, estimations of investments in transportation equipment and machinery, gross domestic product and national income.
3. ICBS other internal users – agriculture, transports and industry departments.
4. Government and public organizations – the Bank of Israel, the Manufacturers Association of Israel, the Ministry of Industry, Trade and Labor, The Export Institute and various other public and private organizations.

Foreign Trade Publications

The Foreign Trade Sector at the Israel's Central Bureau of Statistics publishes monthly data on values of imported and exported goods, exchange rates and imports and exports price indices (quarterly). Values of imports and exports are published according to the following classifications: countries, industry, economic use (imports), section and chapter (based on the Harmonized System), SITC, country of origin and country of purchase (imports) and technological intensity.

Foreign Trade Sector publications list:

	Publication	Frequency	When	Where	Remarks
1.	Israel's Foreign Trade	Monthly	10-13 days following the end of the month	Internet	Press release, under embargo
2.	Israel's Foreign Trade by Country	Monthly	17-20 days following the end of the month	Internet	Press release
3.	Foreign Exchange Rates	Annual	January	Internet	Press release
4.	Foreign Trade Price Indices	Quarterly	70-90 days after the end of the quarter	Internet	Press release
5.	Foreign Trade Statistics Monthly	Monthly	28-30 days after the end of the month	Internet	www.cbs.gov.il/reader/fr_trade/ft_menu_e_v1_new.htm
6.	Imports by Country of Origin	Annually	August	Internet	Press release
7.	Exports by Country Groups and Industry	Annually	October	Internet	Press release and Statistical Abstract of Israel chapter 16
8.	Trade Balance of Manufacturing Exports and Imports by Technological Intensity	Annually	July	Internet	Press release
9.	Statistical Abstract of Israel	Annually	September		Chapter 16
10.	Imports to Israel, 1996-2001- Commodities and Countries	Annually		CD	Payment required
11.	Imports to Israel, 2002-2006- Commodities and Countries	Annually		CD	Payment required

	Publication	Frequency	When	Where	Remarks
12.	Imports to Israel, 2007- Commodities and Countries	Annually		CD	Payment required
13.	Exports from Israel, 1996-2007 Commodities and Countries	Annually		CD	Payment required
14.	Imports and Exports by Commodities and Countries 2008	Annually		Internet	http://www.cbs.gov.il/fortr/impexp/menu_e.htm
15.	Foreign Trade (Statisti-lite)			Paper and Internet	http://www.cbs.gov.il/www/statistical/trade_39_e.pdf
16.	Israel's Foreign Trade (with selected countries) 2005 (Statisti-lite)			Paper and Internet	http://www.cbs.gov.il/www/statistical/ftrade2005_e.pdf
17.	Annual presentation	Annually	January	Internet	http://cbs.gov.il/mazagot-e_n.htm

Most of the time series published on the internet are directly linked to the Central Bureau of Statistics Foreign Trade Database.

The Population Investigated

1. Statistical data on foreign trade presented in the publications of the Central Bureau of Statistics relate solely to import and export of commodities. Data on import and export of services and the remaining international business of Israel are included in the Balance of Payments published quarterly in the "Monthly Bulletin of Statistics" and in greater detail in the Current Statistics series.
2. Imports and exports are recorded according to the "Special System"¹, by which only that portion of the trade flowing through Customs is included. Accordingly, imports do not include goods imported and stored in bonded warehouses, and exports do not include goods exported from these warehouses. Neither included are goods in transit.
3. Foreign trade statistics include, among others, the following goods and business activities:
 - a. Personal import and export: personal effects of immigrants, seamen, returning residents and foreign diplomats (import) and of emigrants (export).
 - b. Goods dispatched or received through postal or courier services.
 - c. Ships and aircraft are included in import and export data whether they have passed through Customs or not. Imports include ships purchased from abroad by Israeli companies and sailing under Israeli flag or a foreign flag. It should be noted that ships and aircraft do not undergo the procedure of passing through Customs.

Exports include ships and aircraft, which were produced in Israel and those, which were previously purchased and later resold abroad in the reporting period.
 - d. Products for exhibitions and fairs are, in principle, included in foreign trade data only if they were sold or given away free of charge. Returns from exhibitions are not included in foreign trade but there are difficulties in identifying these flows.
 - e. Goods under financial lease.
 - f. Gold and silver (non-monetary), both in processed or partly processed form, scrap and remnants intended for industry, smelting or medical use.
 - g. Fuel and food supplied to foreign ships and aircraft in Israeli ports are included in export since 1969, even though they did not pass through Customs.

¹ United Nations, *International Trade Statistics Concepts & Definitions*, Special Papers, Series M, No. 52/Rev.2, 1998.

- h. Effects purchased by tourists in Israel or by Israelis abroad. An estimate of the value of these purchases is included in the account of services in the Balance of Payments. In cases where duty has been charged on goods purchased by Israeli tourists, the goods were included in total imports.
4. Special transactions and commodities not included in foreign trade statistics:
- a. The trade data do not include the transactions with the residents of the Palestinian Authority. The data also do not include the value of the import and export commodities, which were released by the Israeli Customs and belong to the residents of the Palestinian Authority. Data regarding the trade with residents of the Palestinian Authority is published in the balance of payments.
 - b. Commodities imported or exported for a limited period of time and returned without having undergone any processing, e.g. personal effects of tourists (including cars); goods intended for exhibitions, fairs, displays, etc.; commodities intended for temporary storage only; equipment sent to perform contract work and returned after use.
 - c. Effects purchased by tourists in Israel or by Israelis abroad. An estimate of the value of these purchases is included in the account of services in the Balance of Payments. In cases where duty has been charged on goods purchased by Israeli tourists, the goods were included in total imports.
 - d. Engines and parts of aircraft sent by local airlines to their branches or representatives abroad for replacement or repairs and those sent to Israel from branches abroad for repairs or replacement.
 - e. Fish caught by Israeli fishing vessels.
 - f. Monetary gold, securities and legal tender (notes and coins) or currency about to be made legal tender (local currency notes printed abroad are recorded according to the value of the printers and not according to face value).
 - g. Fuel and food supplied to Israeli ships and aircraft in foreign ports (recorded in Balance of Payments as services).
 - h. Ballast and dunnage supplied to foreign ships in Israeli ports and to Israeli ships in foreign ports.
 - i. Imported military equipment and weapons (estimated value is included in the commodities account in the Balance of Payments). The flow is not included in the import of goods because it does not undergo the usual procedure of passing through Customs.
5. Values below the Customs threshold are not included in the statistics. The imports threshold is US\$ 50 and the exports threshold is US\$ 100.
6. The date of statistical registration of the import is the date of the release of the goods by Customs authorities, whereas for exports it is the date of loading the goods on the ship.
7. Data on import of fuel include crude oil and petroleum products such as residual fuel oil, gasoline and coal and its by-products.
8. An important portion of the fresh agriculture exports is carried out by the consignment method. After the sales the data are revised according to the actual revenue based on reports submitted to the CBS by different companies.
9. Diamond imports are recorded until 31 December 1982 according to administrative summaries and since 1 January 1983 - according to the system of all imports. The change in the recording system was applied on 1 August 1982.
10. Data on the import and export of commodities are published according to countries, blocs, regions and continents. The countries within the group are arranged alphabetically according to the Hebrew name of the country within the group.
11. Changes in the membership status of countries in trade blocs, as well as merges and splits, directly influence the list of countries published by the ICBS.
12. Goods under operational lease.
- Follow a list of such changes:
- On October 3rd, 1990, West Germany and East Germany merged into one country. From January, 1991, data on West Germany and East Germany is published under the country name "Germany".

- In 1991 URSS split into 15 new sovereign countries. Since January 1992, data is published separately for the countries: Ukraine, Azerbaijan, Estonia, Armenia, Belarus, Georgia, Russian Federation, Latvia, Lithuania, Moldova, Uzbekistan, Tajikistan, Turkmenistan, Kazakhstan and Kyrgyzstan.
- Since August, 1, 1992, data regarding former Yugoslavia is associated to the new sovereign countries: Yugoslavia, Macedonia, Slovenia and Croatia.
- Since January, 1, 1994, data regarding former Czechoslovakia is associated to the countries: Czech Republic and Slovakia.
- Since 1993, trade data is published separately for Belgium and Luxembourg.
- Since February 2003, data regarding Yugoslavia is published under the new official country name, Serbia-Montenegro.
- Since 2008, trade data is published separately for Serbia and Montenegro.
- The European Union included in 1951 only six founder members: Italy, Belgium, Holland, Luxemburg, West Germany and France. Other countries joined the EU in the years:
 - 1973 – Ireland, United Kingdom and Denmark
 - 1981 – Greece
 - 1986 – Spain and Portugal
 - 1990 – East Germany (as a consequence of the merge with West Germany)
 - 1995 – Austria, Sweden and Finland
 - May 2004 – Cyprus, Czech Republic, Estonia, Hungary, Latvia, Lithuania, Malta, Poland, Slovakia and Slovenia.
 - 2007 – Bulgaria and Romania

The time series "European Union" and "Other European Countries" were updated according to the changes in membership.

11. Since January 2010 trade data between Israel and OECD countries is published (with ISO code). In 2010 the OECD 31 member countries are: Australia, Austria, Belgium, Canada, Chile, Czech Republic, Denmark, Finland, France, Germany, Greece, Hungary, Ireland, Italy, Japan, Korea, Luxemburg, Mexico, the Netherlands, New Zealand, Norway, Poland, Portugal, Slovak Republic, Spain, Sweden, Switzerland, Turkey, United Kingdom, United States of America, Estonia, Israel, Slovenia, Chile².

Data Sources

1. The main sources for imports and exports data are the forms submitted to the Customs authorities by importers and exporters (import and export entry forms).
2. In certain cases the sources are administrative summaries prepared by institutions, which supervise the foreign trade of groups of products, such as aircraft and ships.
3. Imports and exports of ships and aircraft are recorded according to data obtained from the Ministry of Transport and airlines and shipping companies.

Definitions

1. Trade data is published as ("gross" and "net" data):
 - a. Gross imports include consignments imported from abroad for local use (including finishing and repair) which are freed by the Customs immediately after unloading, or which were freed after a time from the bonded warehouses of the Customs. Import data do not include commodities put into bonded warehouses, except for a number of productive enterprises, which are recognized as bonded warehouses. Imports do not include consignments which were exported in the past and which were returned to Israel without any further processing.

http://www.oecd.org/pages/0,3417,en_36734052_36761800_1_1_1_1_1,00.html²

- b. Net imports are obtained by deducting from gross imports the value of goods imported earlier and returned to a supplier abroad without processing or changing its form. As there is no way of identifying the date of entry of the goods to Israel which are being returned abroad, the deduction is done on the date of return abroad. For this reason the returns are deducted from the grand total and not from items detailed by branches.
- c. Gross exports include the flow of products abroad, except consignments of commodities which were previously imported and then returned to a supplier abroad without any processing. It also includes part-finished goods which are sent abroad for additional processing and which eventually will be returned to the sender, and goods which were imported and sold to abroad without processing, when the purchaser is not the supplier.
- d. Net exports are obtained by deducting from the value of gross exports the value of goods, which were previously exported but were returned to the Israeli supplier without processing or change of form. As there is no means of identifying the original date of consignment abroad of exports returned from abroad, the deduction operates on the date of return rather than the date of original export. For this reason returns are deducted from the grand total and not from items detailed by branches (excluding diamonds).

2. Countries

- a. The country of import is defined as "the country of purchase" (otherwise is mentioned), i.e. the country from which the invoice for the goods imported to Israel was sent. In some cases, "the country of purchase" is different from the country of origin (the country of production) and from the country of shipment.
- b. The country of export (destination) is defined as "the country of sale", i.e. the country to which the invoice for the goods exported from Israel was sent. In certain cases "the country of export" is different from the country of consumption and the country of shipment.
- c. As from the agricultural export season of 1991/92 with the dissolution of the Board of Citrus Marketing and transfer of export to other companies, most shipments of this export arrive to Belgium, and are bought by various agents, so there is no information on the country of the (final) destination of the commodity. It should be noted that the sale of flowers through the flower exchange is registered as exports to Netherlands and there is no possibility to classify by country of final destination.

The Value of Commodities

1. **The value of imports** is determined by the importers' report to Customs being based on the value of the transaction as defined in the Treaty of Brussels on the Evaluation of Goods for Customs Purposes (1950). The value of the transaction represents the value for which the goods were sold supplemented by expenditure on transportation and insurance as far as the border of the importing country, including costs of unloading at the exporting port. This definition of the value of the transaction in imports corresponds to the value of the goods according to C.I.F. (Cost, Insurance and Freight).

In most of the cases, the value for Customs purposes includes an imputation of local costs - wharfage and portorage fees.

Import taxes and other taxes levied on imported goods are not included in the value for Customs purposes.

In the event of import of products unaccompanied by monetary recompense, where difficulty exists in determining the value of the transaction (as in the case of gifts), the value is determined by an estimate based on market price. So, for example, the cost of import of gifts for museums is based on the valuation of an insurance assessor.

If imported commodities are freed against a deposit, the import is recorded according to the date of release against the deposit until the final settlement of the account. The amendment of this import is recorded with final settlement, which is also dated according to the actual release of the goods (in other words an amendment of the value of the import may take place after several months).

2. **Import** data are recorded in the import entry forms in the currency of the transaction and are calculated in Israeli Shekels, according to the exchange rate on the date they are freed by Customs and are converted into U.S. dollars too. The exchange rates for these purposes are the exchange rates for Customs purposes on the date of the presentation of the entry forms. In the publications on Foreign Trade, the values of imports and exports are presented in U.S. dollars.

Since the floating of the Israeli Pound in October 1977, the rates of exchange between major foreign currencies and the Pound or the Shekel are determined for Customs according to the rate dictated by the Customs authorities on the basis of data provided by the Bank of Israel.

Customs rules³ (calculating price in foreign currency): The exchange rate will be calculated as the representative exchange rate of foreign currency published by the Bank of Israel plus 0.5%. Price of the goods, or any amount considered for the purposes of Customs laws, denominated in foreign currency (hereinafter – the price) will be calculated in Israeli currency as follows:

The price of the goods cleared in the period between Tuesday and Monday of the following week, will be calculated according to the Israeli currency exchange rate published on the Friday before the Tuesday in question (hereinafter – Friday before); if the representative exchange rate was not published the Friday before the representative exchange rate will be the last published before the last Friday. If in the period between the Friday before and the date of clearance of the goods the representative exchange rate change in a cumulative rate of 3% or more (hereinafter – change) these amounts will be calculated according to the representative rate on revenue goods; if in the day of the clearance no representative exchange rate was published it will be calculated according to the rate including the change issued by the Ministry of Finance.

Changes in the Israeli Currency were introduced in December 1980 and September 1985. In December 1980 the Israeli Pound was changed into Shekel and the value of the change was 10 Israeli Pounds = 1 Shekel. In September 1985 the Shekel was changed by the New Israeli Shekel and the conversion rate was 1,000 Shekel = 1 Israeli New Shekel.

3. **The Value of exports** data are recorded according to F.O.B. (free on board) transaction values before discounts and commissions are paid to foreign factors.
4. **Export** data are recorded in the export entry forms in Israeli Shekels and in the currency in which the transaction is made. The conversion into U.S. dollars is carried out in the monthly summaries, according to the rate on the day the transaction was registered at Customs.

Seasonally Adjusted Data

Several tables present seasonally adjusted data.

Original data: Most series presented include monthly data. For the series for which monthly data is not available, quarterly data is presented.

Seasonally adjusted data: The analysis is done by means of the improved computer program X11-ARIMA/2000 based on moving averages which calculates the seasonal factors-S for each month⁴. These factors may change by use of supplemented or updated data.

Seasonally adjusted data include the prior adjustment factors for trading days and festivals dates (P) that were calculated simultaneously by a new method, which was developed by the Central Bureau of Statistics.

Seasonal adjustments cannot be deducted from all the series and therefore some of the intermediate sums also include series for which no seasonal adjustments were found. The new classification of trade data by branch of origin enabled the expansion of seasonally adjusted data series. Starting with Foreign Trade Quarterly No. 1/1995, 8 new export series and 5 additional import series are published. Monthly data for 1988 and onward can be obtained from the Bureau's database for each basic series and for series totals.

Revision of the Import and Export Data

1. The foreign trade data according to value as well as the classification of commodities and countries, which are currently published, sometimes require revision. The adjustments to the current figures become necessary due to

³ Customs Orders and Rules 5182, published on 15 November 1989.

⁴ For further explanations, see: Central Bureau of Statistics, *Seasonal and Prior Adjustment Factors for 2010. Trends for 2006-2010*. . <http://www.cbs.gov.il/publications/tseries/seasonal10/presentation10.pdf>

errors and omissions in the sources (the Customs' entry form) and in the different stages of processing of the data and also due to changes in the current data caused by conditional releases from Customs (imports) and by consignment shipments (exports). A large number of revisions result from defects in the reporting of physical quantities. Data are amended currently during the year.

2. Indices data of a specific year are amended solely at the end of the year that is in the 4th Quarterly, which includes information on all the current year.

Revision of import and export of rough diamonds:

As of December 1990 (and retroactively since January 1989), sales of rough diamonds to abroad have been recorded as "exports", whereas until then - these sales were defined as "returned imports", and were subtracted of the import data.

This change does not at all affect the data on the trade deficit.

Special Symbols

..	=	unknown or not for publication
0.0	=	a value which is less than half the unit in which data are presented or no cases
*	=	provisional data
n.e.c.	=	not elsewhere classified
NIS	=	New Israeli Shekels
blank space	=	irrelevant as a result of the table's structure
R	=	Revised data

Table D 1. - Trade Countries -Imports and Exports

לוח ד 1. - ארצות הסחר - יבוא ויבוא

Million \$		מיליוני דולרים															
ממל	Code	Countries	ISO	Imports					Exports					ארצות	סמל		
				VI		I - VI		2009	2008	VI		I - VI				2009	2008
				2010	2009	2010	2009			2010	2009	2010	2009				
		Grand Total		4964.9	3958.0	28347.1	21284.9	47368.2	65173.2	5175.7	4143.0	29052.6	21853.8	47935.5	61339.1		
		Europe		2332.0	1986.8	13213.6	10289.1	22857.0	29661.2	1652.8	1276.4	9616.1	7481.7	15373.1	21897.1	יבוא	אירופה
		European Union		1797.0	1534.3	9922.7	7873.8	17491.7	22513.4	1372.6	1047.9	7819.9	5954.2	12389.8	1795.0	יבוא	האיחוד האירופי
105		Austria	AT	23.1	35.0	127.3	145.5	267.3	399.2	13.3	7.0	62.0	41.3	99.9	99.9	יבוא	אוסטריה
005		Italy	IT	185.0	166.3	1137.4	998.6	2126.0	2553.7	113.7	100.6	730.5	554.9	1103.0	1668.8	יבוא	איטליה
007		Ireland	IE	48.0	44.8	253.2	223.6	473.1	415.1	9.4	8.4	42.7	50.3	92.4	99.9	יבוא	אירלנד
224		Estonia	EE	0.5	0.4	2.5	1.0	3.7	4.1	0.0	0.4	0.0	3.9	7.6	13.7	יבוא	אסטוניה
215		Bulgaria	BG	4.5	3.9	22.9	19.4	42.0	52.0	9.3	2.7	64.9	21.2	69.8	56.2	יבוא	בולגריה
010		Belgium	BE	377.5	285.1	1776.9	1124.7	2567.8	4250.3	267.7	231.7	1544.6	1154.9	2371.8	4618.7	יבוא	בלגיה
015		Germany	DE	289.5	269.7	1815.3	1418.2	3361.8	3940.5	155.4	112.0	804.9	689.8	1440.3	1950.6	יבוא	גרמניה
017		Denmark	DK	17.9	19.2	105.3	89.8	200.8	215.4	8.5	10.3	53.4	71.9	136.2	167.0	יבוא	דנמרק
020		Netherlands	NL	192.5	148.7	1026.2	881.8	1885.4	2465.3	149.8	115.8	965.2	763.9	1550.8	2035.0	יבוא	הולנד
235		Hungary	HU	18.9	25.5	133.3	115.5	252.4	288.8	6.7	6.8	54.0	66.8	113.1	174.5	יבוא	הונגריה
023		United Kingdom	GB	220.9	182.6	1124.6	861.8	1907.2	2519.9	223.2	119.1	1048.1	670.9	1423.5	1892.7	יבוא	הממלכה המאוחדת
245		Greece	GR	25.4	12.4	105.4	101.4	200.7	221.4	43.7	32.3	117.2	149.7	295.3	301.9	יבוא	יוון
025		Luxembourg	LU	15.0	3.2	100.9	48.1	117.0	174.0	1.6	1.0	8.1	4.5	10.8	20.4	יבוא	לוקסמבורג
233		Latvia	LV	1.1	20.0	31.7	66.2	100.6	319.4	3.2	2.4	13.6	12.7	25.3	33.9	יבוא	לטביה
234		Lithuania	LT	2.2	2.4	9.1	6.5	13.7	24.5	2.8	1.9	11.4	9.7	19.8	42.4	יבוא	ליטא
255		Malta	MT	1.3	0.1	19.3	7.1	10.3	35.4	1.0	0.3	49.4	6.6	41.0	50.8	יבוא	מלטה
244		Slovenia	SL	11.8	6.2	100.9	33.4	122.4	65.4	7.5	5.9	94.4	55.7	124.4	125.2	יבוא	סלובניה
272		Slovakia	SK	9.4	7.7	30.7	27.9	60.9	49.4	1.2	1.0	7.3	8.0	23.4	28.5	יבוא	סלובקיה
260		Spain	ES	83.0	65.9	451.3	393.7	880.1	959.1	113.2	87.0	580.1	407.4	940.5	1108.0	יבוא	ספרד
265		Poland	PL	22.2	12.4	116.5	72.1	169.8	152.8	30.9	11.9	110.1	115.9	202.2	287.2	יבוא	פולין
125		Portugal	PT	9.3	9.7	42.2	43.0	100.1	114.2	8.0	7.2	53.8	51.9	111.3	98.9	יבוא	פורטוגל
130		Finland	FI	34.1	28.6	184.3	152.6	332.6	370.2	7.4	14.0	70.4	57.5	121.1	169.9	יבוא	פינלנד
271		Czech Republic	CZ	28.4	21.8	118.7	77.8	188.0	165.6	17.6	13.6	80.9	67.7	132.3	161.6	יבוא	איי.צ'כיה
030		France	FR	106.5	104.9	661.5	652.4	1428.7	1889.2	95.5	89.8	657.8	546.8	1110.6	1298.0	יבוא	צרפת
378		Cyprus	CY	6.6	3.4	61.3	23.2	43.9	68.7	57.1	46.1	407.7	245.5	566.8	880.5	יבוא	קפריסין
275		Romania	RO	11.5	9.4	67.7	46.1	112.3	106.2	12.8	10.8	101.9	68.1	135.6	230.6	יבוא	רומניה
135		Sweden	SE	50.9	45.0	296.3	242.4	523.1	693.6	12.1	7.9	77.5	56.7	121.0	181.9	יבוא	שוודיה
		European Free Trade Association (E.F.T.A.)		294.5	265.7	1896.9	1504.4	3353.8	4043.7	93.4	58.5	588.3	509.0	1006.5	1289.5	יבוא	האיחוד האירופי לסחר חופשי (אפס"א)
107		Iceland	IS	2.8	0.7	12.1	5.3	11.8	17.7	0.2	0.2	1.3	1.3	2.8	3.5	יבוא	איסלנד
120		Norway	NO	3.8	3.6	22.9	25.6	52.0	52.4	4.6	5.7	38.0	35.5	61.4	75.6	יבוא	נורבגיה
140		Switzerland	CH	287.9	261.4	1861.9	1473.5	3290.0	3973.6	88.6	52.6	549.0	472.2	942.3	1210.4	יבוא	שווייץ
		Other European Countries		240.5	186.8	1394.0	910.9	2011.5	3104.1	186.8	170.0	1215.9	1018.5	1976.8	2812.6	יבוא	יתר ארצות אירופה
222		Ukraine	UA	11.9	6.8	80.8	45.4	103.9	201.5	9.8	4.8	60.4	34.9	88.1	195.1	יבוא	אוקראינה
241		Bosnia and Herzegovina	BA	0.0	0.0	0.1	0.1	0.3	1.5	0.1	0.2	0.6	1.4	2.1	4.2	יבוא	בוסניה
227		Belarus	BY	0.2	0.4	1.3	1.3	4.3	5.6	2.9	1.2	10.5	8.6	18.4	22.7	יבוא	בלרוס
230		Gibraltar	GL	0.0	0.0	0.2	1.3	3.4	2.7	0.2	0.2	0.4	0.2	2.3	35.2	יבוא	גיברלטר
324		Turkey	TR	152.5	118.8	907.1	668.5	1387.7	1825.3	117.9	87.7	675.8	533.6	1086.0	1609.9	יבוא	טורקיה
236		Moldova Republic	MD	0.1	0.1	0.8	0.6	1.9	2.2	0.3	0.6	2.7	4.8	8.0	25.8	יבוא	מולדובה
243		Macedonia	MK	0.0	0.0	0.3	0.2	1.0	0.8	2.2	1.0	6.7	8.8	12.1	20.8	יבוא	מקדוניה
242		Croatia	HR	0.7	0.2	3.7	13.8	15.3	5.9	1.0	5.8	10.6	18.0	25.2	23.2	יבוא	קרואטיה
229		Russian Federation	RU	73.6	60.2	395.5	177.2	488.6	1047.1	49.7	63.7	395.9	362.9	656.1	777.0	יבוא	רוסיה
299		Other Countries		1.5	0.3	4.2	2.5	5.1	11.5	2.7	4.8	52.3	45.3	78.5	98.7	יבוא	יתר הארצות
		Asia		1111.3	847.4	6272.8	4533.1	10082.1	13712.8	1321.2	790.1	6863.2	3924.4	9520.5	12182.9	יבוא	אסיה
221		Uzbekistan	UZ	0.4	0.1	1.3	0.3	0.4	2.7	1.2	1.2	10.7	6.6	20.7	23.3	יבוא	אוזבקיסטן
223		Azerbaijan	AZ	0.0	0.0	0.0	0.2	0.3	0.3	19.1	2.3	51.4	82.3	264.3	129.4	יבוא	אזרבייג'ן
303		Indonesia	ID	11.8	9.0	69.5	42.6	90.7	293.4	0.9	1.2	7.0	5.3	12.5	15.8	יבוא	אינדונזיה
226		Armenia	AM	0.2	0.0	0.3	0.0	0.1	1.6	1.3	0.2	2.7	2.8	6.5	27.1	יבוא	ארמניה
228		Georgia	GE	0.2	0.1	0.7	0.9	1.9	2.0	5.1	2.2	26.9	21.9	35.0	132.0	יבוא	גרוזיה
315		India	IN	155.9	96.4	925.4	484.9	1157.4	1648.8	245.8	129.6	1635.6	735.8	1810.9	2361.3	יבוא	הודו
318		Hong Kong	HK	109.4	91.8	577.6	490.9	1111.5	1813.7	457.9	271.1	1911.6	1226.3	2874.2	4140.8	יבוא	הונג קונג
321		Vietnam	VN	6.7	6.8	38.3	33.5	71.5	140.0	8.3	21.1	50.3	55.7	117.6	79.4	יבוא	וייטנאם
232		Turkmenistan	TM	0.0	0.0	0.0	0.5	0.6	0.2	4.3	0.8	11.8	0.8	3.9	1.7	יבוא	טורקמניסטן
363		Taiwan	TW	62.1	42.2	333.2	253.9	544.4	712.4	51.1	47.0	336.4	183.0	478.2	473.0	יבוא	טייוון
327		Japan	JP	143.3	145.2	861.6	709.3	1523.7	2226.7	51.9	41.0	292.5	255.1	527.6	883.0	יבוא	יפן
328		Jordan	JO	4.9	5.6	37.1	25.7	70.0	105.9	14.9	14.8	93.0	109.9	231.3	288.5	יבוא	ירדן
312		Mayanmar	MM	0.1	0.0	0.2	0.0	0.2	0.6	0.1	0.0	1.8	2.7	4.6	1.3	יבוא	מיאנמר
336		Malaysia	MY	7.7	6.4	40.0	37.1	68.5	100.6	66.8	1.2	404.3	5.4	116.8	30.2	יבוא	מלזיה
345		China ¹⁾	CN	401.9	271.4	2191.0	1597.2	3521.1	4244.0	185.4	89.8	914.3	405.9	1044.6	1293.5	יבוא	סין ¹⁾
350		Singapore	SG	56.4	45.5	356.6	217.5	534.0	552.5	39.7	36.8	248.8	185.9	477.4	536.6	יבוא	סינגפור
369		Sri Lanka	LK	2.7	2.2	14.3	10.4	25.7	47.9	3.7	2.2	23.2	18.3	42.2	72.8	יבוא	סרי לנקה
360		Philippines	PH	6.6	4.7	40.9	34.1	71.0	86.8	13.9	13.7	93.2	61.8	151.2	151.2	יבוא	פיליפינים
372		South Korea	KR	96.4	82.6	533.4	411.7	871.1	1103.2	87.7	77.4	445.5	340.4	841.0	818.5		

Table D 1. - Trade Countries -Imports and Exports

לוח ד 1. - ארצות הסחר - יבוא ויבוא

Million \$		מיליוני דולרים															
ממל	Code	Countries	ISO	Imports					Exports					ארצות	סמל		
				VI		I - VI		2009	2008	VI		I - VI				2009	2008
				2010	2009	2010	2009			2010	2009	2010	2009				
		Grand Total		4964.9	3958.0	28347.1	21284.9	47368.2	65173.2	5175.7	4143.0	29052.6	21853.8	47935.5	61339.1	סך כולל	
Africa				53.6	63.1	260.5	249.1	566.4	733.6	84.8	149.8	688.5	532.9	1085.8	1468.5	אפריקה	
Uganda	UG			1.5	0.7	3.9	4.3	8.1	7.2	0.5	1.1	3.8	4.5	13.1	11.6	יוגנדה	401
Ethiopia	ET			2.7	2.4	29.0	18.0	35.8	46.2	4.2	1.4	11.7	6.8	12.4	18.4	אתיופיה	410
Botswana	BW			0.0	0.0	0.0	0.0	0.0	0.0	9.3	7.4	42.6	30.5	59.7	79.9	בוטסואנה	412
Gabon	GA			0.0	0.0	0.0	0.0	0.0	0.0	0.5	0.1	1.6	1.3	1.9	2.9	גבון	416
Ghana	GH			0.1	0.2	0.4	0.6	1.3	2.0	1.3	1.0	74.7	36.6	90.2	33.6	גנה	420
Dem. Rep. of the Congo	CD			0.0	0.0	0.0	0.0	0.0	0.0	0.0	0.0	0.1	0.0	0.1	0.2	דמו'רפ' של קונגו	482
South Africa	ZA			11.8	32.4	76.7	126.3	198.0	494.2	33.1	23.9	186.2	107.2	258.4	460.4	דרום אפריקה	428
Zimbabwe	ZW			0.1	0.0	0.1	0.0	0.0	0.0	0.4	0.1	1.7	0.5	1.5	2.0	זימבבווה	496
Zambia	ZM			0.4	0.0	2.1	0.0	0.6	1.6	0.1	0.3	0.6	1.1	1.8	1.6	זמביה	434
Cote d'Ivoire	CI			0.2	1.2	6.0	4.4	8.1	8.9	0.6	1.2	3.5	5.2	8.4	9.3	חוף השנהב	436
Tanzania	TZ			0.1	0.4	1.0	3.4	6.6	6.2	0.4	0.7	8.7	5.3	12.5	21.2	טנזניה	442
Mauritius	MU			0.0	0.0	0.0	0.2	0.2	0.8	0.3	0.5	2.3	1.5	4.8	11.1	מאוריטיוס	454
Egypt	EG			34.2	22.9	127.2	77.9	270.9	132.4	10.7	33.4	72.1	77.2	134.5	139.0	מצרים	462
Morocco	MA			0.5	0.5	2.5	1.9	3.2	3.9	1.5	1.3	7.2	9.6	18.5	20.6	מרוקו	464
Nigeria	NG			0.0	0.3	0.5	0.8	2.4	1.4	6.4	38.2	129.1	113.0	210.2	304.3	ניגריה	468
Namibia	NA			0.0	0.0	0.2	0.1	0.2	0.5	2.2	0.8	3.9	1.5	3.0	22.0	נמיביה	429
Senegal	SN			0.3	0.1	1.2	0.5	1.1	0.7	0.1	0.2	1.2	0.7	3.7	8.8	סנגל	474
Congo	CG			0.0	0.0	0.3	0.0	0.0	0.4	0.8	0.5	16.6	4.9	20.5	12.2	קונגו	486
Cameroon	CM			0.0	0.0	0.0	0.1	0.1	0.5	1.1	1.3	7.3	13.8	24.3	18.2	קמרון	488
Kenya	KE			1.4	1.9	7.0	8.9	24.3	23.5	4.6	9.0	25.8	35.8	66.4	115.0	קניה	490
Reunion	RE			0.0	0.0	0.0	0.0	0.0	0.0	0.1	0.0	1.3	0.7	1.5	1.3	ראוניון	492
Rwanda	RW			0.0	0.0	0.0	0.0	0.0	0.6	0.7	1.1	4.6	3.4	4.8	19.7	רואנדה	494
Other Countries				0.3	0.1	2.4	1.7	5.5	2.6	5.9	26.3	81.9	71.8	133.6	155.2	יתר הארצות	499
America				692.2	605.1	3740.6	3363.7	6819.7	9745.7	1884.9	1655.4	10703.4	8399.4	19069.5	23177.1	אמריקה הצפונית	
North America				626.3	572.6	3413.9	3121.5	6261.3	8659.6	1729.8	1492.3	9746.1	7843.0	17624.1	21203.5	ארצות הברית	
USA	US			573.6	544.1	3137.8	2927.8	5849.1	8034.4	1644.1	1403.0	9245.9	7437.6	16774.1	19972.5	ארצות הברית	505
Mexico	MX			13.7	9.1	71.3	56.3	117.8	115.8	22.7	37.9	148.9	133.8	271.7	329.3	מקסיקו	723
Canada	CA			39.0	19.4	204.8	137.4	294.4	509.4	63.0	51.4	351.3	271.6	578.3	901.7	קנדה	510
Central America				2.1	1.7	16.8	20.5	34.6	48.6	59.4	15.4	302.8	82.7	299.1	122.1	ארצות המרכזיות	
El Salvador	SV			0.0	0.0	0.1	0.0	0.2	0.3	0.9	0.2	4.1	0.7	2.0	22.1	אל סלבדור	611
Bahamas	BS			0.0	0.0	0.0	0.0	0.0	0.0	0.0	0.0	0.4	0.0	0.2	0.4	ההאמה, א"	631
Barbados	BB			0.0	0.0	0.0	0.0	0.0	0.0	0.1	0.1	0.3	0.6	1.1	1.7	ברבדוס	621
Jamaica	JM			0.0	0.0	0.0	0.0	0.0	0.0	0.2	0.3	3.1	1.8	3.7	14.3	ג'מייקה	625
Guatemala	GT			0.0	0.4	1.2	4.0	4.8	2.7	3.2	2.4	12.2	9.2	23.3	31.4	גואטמלה	613
Haiti	HT			0.0	0.0	0.0	0.0	0.0	0.0	0.2	0.3	1.2	1.1	2.1	3.7	האיטי	636
Honduras	HN			0.0	0.1	0.7	0.3	0.9	0.7	0.4	3.9	3.7	5.8	12.1	29.8	הונדורס	615
Trinidad and Tabago	TT			0.0	0.0	0.0	0.0	0.0	0.0	0.7	0.3	4.3	1.8	5.1	2.4	טרינידד וטובגו	627
Martinique	MQ			0.0	0.0	0.0	0.0	0.0	0.0	0.3	0.1	1.2	1.3	2.1	1.9	מרטניק	650
Nicaragua	NI			0.1	0.1	0.1	0.2	0.2	0.0	0.5	1.0	1.9	3.0	3.9	5.3	ניקרגואה	617
Panama	PA			0.8	0.6	10.0	7.9	14.3	32.6	2.5	0.5	12.0	7.7	18.9	17.0	פנמה	641
Costa Rica	CR			0.5	0.1	1.8	1.8	3.5	2.0	39.5	2.4	229.2	20.2	170.0	43.0	קוסטה ריקה	619
Dominican Republic	DO			0.2	0.2	0.9	0.4	0.8	1.0	2.3	1.5	9.2	7.7	17.1	22.1	רפובליקה דומיניקנית	639
Other Countries				0.5	0.2	2.0	5.9	9.9	9.3	8.6	2.4	20.0	21.8	37.5	35.4	יתר הארצות	649
South America				63.8	30.8	309.9	221.7	523.8	1037.5	95.7	147.7	654.5	473.7	1146.3	1752.5	ארצות הדרומיות	
Uruguay	UY			5.2	2.9	25.9	24.6	50.0	80.3	0.6	0.6	4.7	3.9	9.6	19.3	אורוגוואי	711
Ecuador	EC			0.0	0.2	1.8	2.0	3.5	4.5	4.3	2.0	18.4	11.4	25.2	41.3	אקוודור	713
Argentina	AR			4.1	5.4	71.1	67.1	147.0	150.3	6.8	8.4	43.0	35.5	75.9	125.2	ארגנטינה	715
Bolivia	BO			0.1	0.1	1.2	0.8	2.8	2.1	0.6	0.4	2.7	1.8	7.3	6.4	בוליביה	717
Brazil	BR			26.0	16.8	107.4	98.1	207.8	297.2	56.3	79.1	424.8	258.4	716.5	1172.0	ברזיל	719
Venezuela	VE			0.0	0.3	0.0	0.3	0.4	0.7	2.6	0.7	9.2	7.1	18.9	35.0	ונצואלה	721
Paraguay	PY			0.5	0.9	17.0	7.9	22.6	20.1	0.2	0.1	1.1	2.8	5.0	18.2	פרגוואי	725
Peru	PE			0.6	0.2	3.9	1.3	4.1	4.6	5.9	4.2	39.5	20.6	49.2	46.8	פרו	727
Chile	CL			7.3	2.8	23.4	12.9	31.7	32.5	7.0	11.3	38.3	36.1	119.9	68.3	צ'ילה	731
Colombia	CO			20.0	1.2	58.2	6.7	53.9	445.2	11.0	40.9	70.2	96.0	166.7	166.7	קולומביה	733
Other Countries				0.0	0.0	0.0	0.0	0.0	0.0	0.4	0.0	2.6	0.1	0.4	1.7	יתר הארצות	799
Oceania				7.6	11.6	80.8	85.2	192.3	262.5	49.5	37.6	264.6	194.2	497.2	786.6	אוקיאניה	
Australia	AU			7.0	10.4	76.1	78.2	178.7	240.4	45.9	34.1	244.6	170.9	432.7	711.3	אוסטרליה	805
New Zealand	NZ			0.6	1.2	4.7	6.6	12.9	21.8	3.2	2.9	17.6	21.7	59.5	67.8	ניו זילנד	810
Papua New Guinea	PG			0.0	0.0	0.0	0.0	0.0	0.0	0.0	0.2	0.0	0.4	2.0	0.6	פפואה גינאה החדשה	806
Fiji	FJ			0.0	0.0	0.0	0.4	0.7	0.3	0.4	0.2	1.9	0.8	2.1	3.1	פיג'י	807
Other Countries				0.0	0.0	0.0	0.0	0.0	0.0	0.0	0.2	0.5	0.4	0.9	3.8	יתר הארצות	899
Unclassified																ארצות בלתי מסווגות	
Countries				768.2	444.0	4778.8	2764.7	6850.7	11057.4	182.5	233.7	916.8	1321.2	2389.4	1826.9	סך כולל	900

ce July 1997 the data on trade with Hong-Kong should be added to the data on China.

החל בחודש יולי 1997 יש ליצרר לנתונים על סין את נתוני הסחר עם הונג קונג.

Table D 2. - Trade Countries -Imports and Exports, excl. Diamonds

לוח ד 2 - ארצות הסחר - יבוא ויבוא, ללא יהלומים

Million \$		מיליוני דולרים														
ממל	Countries	ISO	Imports					Exports					ארצות	סמל		
			VI		I - VI		VI		I - VI		VI					
			2010	2009	2010	2009	2010	2009	2010	2009	2010	2009				
	Grand Total		4175.8	3464.9	24419.0	19364.2	42050.1	55808.5	3610.0	3113.6	20836.3	16721.1	36336.6	41941.3	סך כולל	
	Europe		1885.2	1681.6	11028.1	9206.1	19900.9	24371.0	1344.9	1020.1	7727.8	6142.4	12555.5	16777.7	אירופה	
	European Union		1480.1	1303.3	8520.0	7092.2	15628.4	18843.3	1146.1	839.6	6433.1	5065.8	10489.6	13801.9	האיחוד האירופי	
105	Austria	AT	22.7	35.0	126.7	145.1	266.3	397.0	12.4	6.7	59.5	40.0	96.7	95.4	אוסטריה	105
005	Italy	IT	184.3	165.6	1136.2	992.7	2118.7	2534.6	109.5	95.5	698.5	523.4	1044.9	1597.4	איטליה	005
007	Ireland	IE	48.0	44.8	253.2	223.6	473.1	415.1	9.4	8.4	42.7	50.3	92.4	99.9	אירלנד	007
224	Estonia	EE	0.5	0.4	2.5	1.0	3.7	4.1	0.0	0.4	0.0	3.9	7.6	13.7	אסטוניה	224
215	Bulgaria	BG	4.5	3.9	22.9	19.4	42.0	49.3	9.3	2.7	64.9	21.1	69.7	54.1	בולגריה	215
010	Belgium	BE	120.5	112.7	660.8	544.4	1166.2	1371.1	72.4	55.6	402.3	426.2	811.3	1201.6	בלגיה	010
015	Germany	DE	289.1	269.7	1813.7	1418.2	3359.5	3938.9	152.6	108.6	785.1	668.9	1399.5	1901.7	גרמניה	015
017	Denmark	DK	17.9	19.2	105.2	89.8	200.8	215.1	8.5	10.3	52.5	71.3	132.8	164.5	דנמרק	017
020	Netherlands	NL	192.5	148.7	1026.2	881.8	1885.4	2465.3	149.6	115.7	964.5	763.7	1550.3	2031.0	הולנד	020
235	Hungary	HU	18.9	25.5	133.3	115.5	251.9	288.7	6.7	6.8	54.0	66.7	112.9	174.0	הונגריה	235
023	United Kingdom	GB	162.8	125.1	849.2	667.5	1459.7	1765.7	208.3	101.6	927.0	600.1	1265.2	1619.8	הממלכה המאוחדת	023
245	Greece	GR	25.4	12.4	105.4	101.4	200.7	221.2	43.7	31.8	116.5	148.4	292.6	294.3	יוון	245
025	Luxembourg	LU	15.0	3.2	100.9	48.1	117.0	174.0	1.6	1.0	8.1	4.5	10.8	20.4	לוקסמבורג	025
233	Latvia	LV	1.1	20.0	31.7	66.2	100.6	319.4	3.2	2.4	13.6	12.7	25.3	33.9	לטביה	233
234	Lithuania	LT	2.2	2.4	9.1	6.5	13.7	24.5	2.8	1.9	11.4	9.7	19.8	42.4	ליטא	234
255	Malta	MT	1.3	0.1	19.3	7.1	10.3	35.4	1.0	0.3	49.4	6.6	41.0	50.8	מלטה	255
244	Slovenia	SI	11.8	6.2	100.9	33.4	122.4	65.4	7.5	5.9	94.4	55.7	124.4	125.2	סלובניה	244
272	Slovakia	SK	9.4	7.7	30.7	27.9	60.9	49.4	1.2	1.0	7.3	8.0	23.4	28.5	סלובקיה	272
260	Spain	ES	83.0	65.9	451.3	393.6	879.3	958.9	111.7	86.5	575.7	404.5	933.7	1092.4	ספרד	260
265	Poland	PL	22.2	12.4	116.5	72.1	169.8	152.8	30.9	11.8	109.9	115.3	201.5	284.9	פולין	265
125	Portugal	PT	9.3	9.7	42.1	43.0	100.1	114.2	8.0	7.2	53.7	51.9	111.3	98.9	פורטוגל	125
130	Finland	FI	34.1	28.6	184.3	152.6	332.6	370.2	7.3	13.9	69.7	56.9	119.8	167.8	פינלנד	130
271	Czech Republic	CZ	28.4	21.8	118.7	77.8	188.0	165.6	17.6	13.6	80.2	66.8	131.0	158.9	צ'כיה	271
030	France	FR	106.2	104.9	661.1	652.2	1428.8	1882.0	91.1	85.5	611.5	521.2	1052.1	1162.6	צרפת	030
378	Cyprus	CY	6.6	3.0	54.1	22.8	43.5	68.0	55.4	45.8	402.0	243.9	564.1	879.5	קפריסין	378
275	Romania	RO	11.5	9.4	67.7	46.1	112.3	103.8	12.8	10.8	101.9	68.1	135.6	228.6	רומניה	275
135	Sweden	SE	50.9	45.0	296.3	242.4	523.1	693.6	11.6	7.9	76.8	56.0	119.9	179.7	שוודיה	135
	European Free Trade Association (E.F.T.A.)		210.8	225.6	1404.1	1286.6	2567.5	2903.6	14.2	19.2	106.7	119.8	206.6	248.8	האיגוד האירופי לסחר חופשי (אפט"א)	
107	Iceland	IS	2.8	0.7	12.1	5.3	11.8	17.7	0.2	0.2	1.3	1.3	2.2	3.5	איסלנד	107
120	Norway	NO	3.8	3.6	22.9	25.6	52.0	52.4	4.2	5.4	35.7	34.5	59.0	73.7	נורבגיה	120
140	Switzerland	CH	204.2	221.3	1369.1	1255.7	2503.7	2833.5	9.8	13.6	69.7	84.0	145.4	171.6	שווייץ	140
	Other European Countries		194.3	152.7	1104.0	827.3	1705.0	2624.1	184.6	161.3	1188.0	956.8	1859.3	2727.0	יתר ארצות אירופה	
222	Ukraine	UA	11.8	6.8	80.6	44.1	102.6	198.0	9.6	4.8	58.8	33.1	76.3	182.1	אוקראינה	222
241	Bosnia and Herzegovina	BA	0.0	0.0	0.1	0.1	0.3	1.5	0.1	0.2	0.6	1.4	2.1	4.2	בוסניה	241
227	Belarus	BY	0.2	0.0	1.3	0.9	3.9	5.6	2.9	1.2	10.5	8.6	18.4	22.7	בלרוס	227
230	Gibraltar	GL	0.0	0.0	0.2	1.3	3.4	2.7	0.2	0.2	0.4	0.2	2.3	35.2	גיברלטר	230
324	Turkey	TR	152.5	118.6	906.6	668.0	1387.2	1823.2	117.2	86.7	667.5	528.1	1070.7	1586.4	טורקיה	324
236	Moldova Republic	MD	0.1	0.1	0.8	0.6	1.9	2.2	0.3	0.6	2.7	4.8	8.0	25.8	מולדובה	236
243	Macedonia	MK	0.0	0.0	0.3	0.2	1.0	0.8	2.2	1.0	6.7	8.8	12.1	20.8	מקדוניה	243
242	Croatia	HR	0.7	0.2	3.7	13.8	15.3	5.9	1.0	5.8	10.6	18.0	25.2	23.2	קרואטיה	242
229	Russian Federation	RU	27.5	26.7	106.2	95.8	184.3	572.7	48.4	56.0	377.9	308.5	565.7	727.9	רוסיה	229
299	Other Countries		1.5	0.3	4.2	2.5	5.1	11.5	2.7	4.8	52.3	45.3	78.5	98.7	יתר הארצות	299
	Asia		958.0	744.9	5405.5	4090.3	8885.0	11612.6	733.6	459.8	4156.7	2431.2	5938.8	6739.5	אסיה	
221	Uzbekistan	UZ	0.4	0.1	1.3	0.3	0.4	2.7	1.2	1.2	10.7	6.6	20.7	23.1	אוזבקיסטן	221
223	Azerbaijan	AZ	0.0	0.0	0.0	0.2	0.3	0.3	19.1	2.3	51.4	82.3	264.3	128.3	אזרבייג'ן	223
303	Indonesia	ID	11.8	9.0	69.5	42.6	90.7	293.4	0.9	1.2	7.0	5.3	12.5	15.8	אינדונזיה	303
226	Armenia	AM	0.2	0.0	0.2	0.0	0.1	0.4	0.3	0.2	1.3	2.5	6.1	9.6	ארמניה	226
228	Georgia	GE	0.2	0.1	0.7	0.9	1.9	2.0	5.1	2.2	26.9	21.9	35.0	132.0	גרוזיה	228
315	India	IN	62.4	46.0	343.1	248.6	518.2	673.6	137.8	72.4	1004.3	489.4	1198.5	1377.9	הודו	315
318	Hong Kong	HK	62.1	46.8	362.0	320.2	660.9	881.6	43.6	34.3	206.0	163.6	365.4	409.4	הונג קונג	318
321	Vietnam	VN	6.7	6.8	38.3	33.5	71.5	140.0	8.3	21.1	50.3	55.7	117.6	79.4	וייטנאם	321
232	Turkmenistan	TM	0.0	0.0	0.0	0.5	0.6	0.2	4.3	0.8	11.8	0.8	3.9	1.7	טורקמניסטן	232
363	Taiwan	TW	62.1	42.1	332.6	252.9	541.9	709.7	48.7	45.2	323.5	174.6	456.8	450.7	טייוון	363
327	Japan	JP	142.8	144.8	856.3	706.1	1513.9	2210.2	48.2	36.3	271.3	222.4	472.7	796.3	יפן	327
328	Jordan	JO	4.9	5.6	37.1	25.7	70.0	105.9	14.9	14.3	92.1	109.1	229.1	283.1	ירדן	328
312	Mayanmar	MM	0.1	0.0	0.2	0.0	0.2	0.6	0.1	0.0	1.8	2.7	4.6	1.3	מיאנמר	312
336	Malaysia	MY	7.7	6.4	40.0	37.1	68.5	100.6	66.8	1.2	404.3	5.4	116.8	30.2	מלזיה	336
345	China	CN	400.7	268.5	2180.1	1586.8	3484.2	4235.3	154.6	79.6	758.8	351.3	878.9	1100.9	סין	345
350	Singapore	SG	55.9	45.5	351.7	211.3	527.3	540.7	35.4	33.6	215.3	167.5	434.7	472.3	סינגפור	350
369	Sri Lanka	LK	0.6	0.4	3.1	2.1	5.7	7.9	1.4	1.0	9.2	9.2	18.1	24.8	סרי לנקה	369
360	Philippines	PH	6.6	4.7	40.9	34.1	71.0	86.7	13.9	13.7	93.2	61.7	151.1	151.0	פיליפינים	360
372	South Korea	KR	96.4	82.6	533.4	411.7	871.1	1102.9	87.0	77.1	441.7	337.9	833.7	809.3	קוריאה הדרומית	372
237	Kazakhstan	KZ	0.0	0.6	0.2	0.9	0.9	3.4	6.8	3.1	23.9	17.2	57.0	158.6	קזחסטן	237
387	Thailand	TH	36.0	33.0	210.0	164.4	370.7	445.7	29.5	11.8	116.2	98.7	193.9	213.9	תאילנד	387
399	Other Countries															

Table D 2. - Trade Countries -Imports and Exports, excl. Diamonds

לוח ד 2 - ארצות הסחר - יבוא ויבוא, ללא יהלומים

Million \$		מיליוני דולרים													
ממל	Countries	ISO	Imports					Exports					ארצות	סמל	
			VI		I - VI		VI		I - VI		VI				
			2010	2009	2010	2009	2010	2009	2010	2009	2010	2009			
Code															
Grand Total			4175.8	3464.9	24419.0	19364.2	42050.1	55808.5	3610.0	3113.6	20836.3	16721.1	36336.6	41941.3	סך כולל
Africa			53.6	63.1	260.5	249.1	566.4	733.6	70.1	144.8	615.6	511.2	1031.2	1343.3	אפריקה
401	Uganda	UG	1.5	0.7	3.9	4.3	8.1	7.2	0.5	1.1	3.8	4.5	13.1	11.6	אוגנדה
410	Ethiopia	ET	2.7	2.4	29.0	18.0	35.8	46.2	4.2	1.4	11.7	6.8	12.4	18.4	אתיופיה
412	Botswana	BW	0.0	0.0	0.0	0.0	0.0	0.0	9.3	7.4	42.6	30.5	59.7	79.9	בוטסואנה
416	Gabon	GA	0.0	0.0	0.0	0.0	0.0	0.0	0.5	0.1	1.6	1.3	1.9	2.9	גבון
420	Ghana	GH	0.1	0.2	0.4	0.6	1.3	2.0	1.3	1.0	74.7	36.6	90.2	33.6	גנה
482	Dem. Rep. of the Congo	CD	0.0	0.0	0.0	0.0	0.0	0.0	0.0	0.0	0.1	0.0	0.1	0.2	דמ.רפ' של קונגו
428	South Africa	ZA	11.8	32.4	76.7	126.3	198.0	494.2	18.4	18.9	114.0	85.5	204.8	336.4	דרום אפריקה
496	Zimbabwe	ZW	0.1	0.0	0.1	0.0	0.0	0.0	0.4	0.1	1.7	0.5	1.5	2.0	זימבבואה
434	Zambia	ZM	0.4	0.0	2.1	0.0	0.6	1.6	0.1	0.3	0.6	1.1	1.8	1.6	זמביה
436	Cote d'Ivoire	CI	0.2	1.2	6.0	4.4	8.1	8.9	0.6	1.2	3.5	5.2	8.4	9.3	חוף השנהב
442	Tanzania	TZ	0.1	0.4	1.0	3.4	6.6	6.2	0.4	0.7	8.7	5.3	12.5	21.2	טנזניה
454	Mauritius	MU	0.0	0.0	0.0	0.2	0.2	0.8	0.3	0.5	1.6	1.5	3.8	9.9	מאוריטיוס
462	Egypt	EG	34.2	22.9	127.2	77.9	270.9	132.4	10.7	33.4	72.1	77.2	134.5	139.0	מצרים
464	Morocco	MA	0.5	0.5	2.5	1.9	3.2	3.9	1.5	1.3	7.2	9.6	18.5	20.6	מרוקו
468	Nigeria	NG	0.0	0.3	0.5	0.8	2.4	1.4	6.4	38.2	129.1	113.0	210.2	304.3	ניגריה
429	Namibia	NA	0.0	0.0	0.2	0.1	0.2	0.5	2.2	0.8	3.9	1.5	3.0	22.0	נמיביה
474	Senegal	SN	0.3	0.1	1.2	0.5	1.1	0.7	0.1	0.2	1.2	0.7	3.7	8.8	סנגל
486	Congo	CG	0.0	0.0	0.3	0.0	0.0	0.4	0.8	0.5	16.6	4.9	20.5	12.2	קונגו
488	Cameroon	CM	0.0	0.0	0.0	0.1	0.1	0.5	1.1	1.3	7.3	13.8	24.3	18.2	קמרון
490	Kenya	KE	1.4	1.9	7.0	8.9	24.3	23.5	4.6	9.0	25.8	35.8	66.4	115.0	קניה
492	Reunion	RE	0.0	0.0	0.0	0.0	0.0	0.0	0.1	0.0	1.3	0.7	1.5	1.3	ראוניון
494	Rwanda	RW	0.0	0.0	0.0	0.0	0.0	0.6	0.7	1.1	4.6	3.4	4.8	19.7	רואנדה
499	Other Countries		0.3	0.1	2.4	1.7	5.5	2.6	5.9	26.3	81.9	71.8	133.6	155.2	יתר הארצות
America			614.0	563.3	3395.1	3179.3	6316.6	8760.9	1248.5	1233.4	7245.5	6187.9	14074.0	14708.4	אמריקה
North America			548.3	530.8	3069.5	2938.7	5761.8	7679.2	1093.7	1070.4	6293.1	5634.2	12638.4	12741.2	אמריקה הצפונית
505	USA	US	504.6	502.4	2834.1	2745.9	5352.1	7067.3	1014.3	985.5	5822.4	5255.4	11846.4	11601.2	ארצות הברית
723	Mexico	MX	13.7	9.1	71.3	56.3	117.8	115.8	22.7	37.9	148.9	130.8	268.7	329.2	מקסיקו
510	Canada	CA	30.0	19.3	164.1	136.5	291.9	496.1	56.7	47.0	321.8	248.0	523.3	810.8	קנדה
Central America			2.1	1.7	16.3	19.2	31.3	47.1	59.1	15.4	300.1	81.4	293.5	219.7	אמריקה המרכזית
611	El Salvador	SV	0.0	0.0	0.1	0.0	0.2	0.3	0.9	0.2	4.1	0.7	2.0	12.7	אל-סלבדור
631	Bahamas	BS	0.0	0.0	0.0	0.0	0.0	0.0	0.0	0.0	0.4	0.0	0.2	0.4	בהאמה א"י
621	Barbados	BB	0.0	0.0	0.0	0.0	0.0	0.0	0.1	0.1	0.3	0.6	1.1	1.7	ברבדוס
625	Jamaica	JM	0.0	0.0	0.0	0.0	0.0	0.0	0.2	0.3	3.1	1.8	3.7	14.4	ג'מייקה
613	Guatemala	GT	0.0	0.4	1.2	4.0	4.8	2.7	3.2	2.4	12.2	9.2	23.3	31.3	גואטמלה
636	Haiti	HT	0.0	0.0	0.0	0.0	0.0	0.0	0.2	0.3	1.2	1.1	2.1	3.7	האיטי
615	Honduras	HN	0.0	0.1	0.7	0.3	0.9	0.7	0.4	3.9	3.7	5.8	12.1	29.8	הונדורס
627	Trinidad and Tobago	TT	0.0	0.0	0.0	0.0	0.0	0.0	0.7	0.3	4.3	1.8	5.1	2.4	טרינידד וטובגו
650	Martinique	MQ	0.0	0.0	0.0	0.0	0.0	0.0	0.3	0.1	1.2	1.3	2.1	1.9	מרטניק
617	Nicaragua	NI	0.1	0.1	0.1	0.2	0.2	0.0	0.5	1.0	1.9	3.0	3.9	5.3	ניקרגואה
641	Panama	PA	0.8	0.6	9.5	6.6	11.0	31.1	2.2	0.5	9.3	6.4	13.3	15.6	פנמה
619	Costa Rica	CR	0.5	0.1	1.8	1.8	3.5	2.0	39.5	2.4	229.2	20.2	170.0	43.0	קוסטה ריקה
639	Dominican Republic	DO	0.2	0.2	0.9	0.4	0.8	1.0	2.3	1.5	9.2	7.7	17.1	22.1	רפובליקה דומיניקנית
649	Other Countries		0.5	0.2	2.0	5.9	9.9	9.3	8.6	2.4	20.0	21.8	37.5	35.4	יתר הארצות
South America			63.6	30.8	309.3	221.4	523.5	1034.6	95.7	147.6	652.3	472.3	1142.1	1747.5	אמריקה הדרומית
711	Uruguay	UY	5.2	2.9	25.9	24.6	50.0	80.3	0.6	0.6	4.7	3.9	9.6	19.3	אורוגוואי
713	Ecuador	EC	0.0	0.2	1.8	2.0	3.5	4.5	4.3	2.0	18.4	11.4	25.2	41.3	אקוודור
715	Argentina	AR	4.1	5.4	71.1	67.0	146.9	150.3	6.8	8.4	42.9	35.5	75.9	124.9	ארגנטינה
717	Bolivia	BO	0.1	0.1	1.2	0.8	2.8	2.1	0.6	0.4	2.7	1.8	7.3	6.4	בוליביה
719	Brazil	BR	25.8	16.8	106.8	97.9	207.6	294.3	56.3	79.0	423.1	257.5	713.3	1168.1	ברזיל
721	Venezuela	VE	0.0	0.3	0.0	0.3	0.4	0.7	2.6	0.7	9.1	7.0	18.7	34.5	ונצואלה
725	Paraguay	PY	0.5	0.9	17.0	7.9	22.6	20.1	0.2	0.1	1.1	2.8	5.0	18.2	פרגוואי
727	Peru	PE	0.6	0.2	3.9	1.3	4.1	4.6	5.9	4.2	39.5	20.6	49.2	46.8	פרו
731	Chile	CL	7.3	2.8	23.4	12.9	31.7	32.5	7.0	11.3	38.0	35.7	67.5	119.6	צ'ילה
733	Colombia	CO	20.0	1.2	58.2	6.7	53.9	445.2	11.0	40.9	70.2	96.0	170.0	166.7	קולומביה
799	Other Countries		0.0	0.0	0.0	0.0	0.0	0.0	0.4	0.0	2.6	0.1	0.4	1.7	יתר הארצות
Oceania			7.6	11.1	80.6	84.7	191.3	220.7	43.1	31.8	226.4	167.3	429.1	679.2	אוקיאניה
805	Australia	AU	7.0	9.9	75.9	77.7	177.8	198.6	39.6	28.4	208.0	144.7	366.3	606.2	אוסטרליה
810	New Zealand	NZ	0.6	1.2	4.7	6.6	12.8	21.8	3.1	2.8	16.0	21.0	57.8	65.5	ניו זילנד
806	Papua New Guinea	PG	0.0	0.0	0.0	0.0	0.0	0.0	0.0	0.2	0.0	0.4	2.0	0.6	פפואה גינאה החדשה
807	Fiji	FJ	0.0	0.0	0.0	0.4	0.7	0.3	0.4	0.2	1.9	0.8	2.1	3.1	פיג'י
899	Other Countries		0.0	0.0	0.0	0.0	0.0	0.0	0.0	0.2	0.5	0.4	0.9	3.8	יתר הארצות
Unclassified Countries			657.4	400.9	4249.2	2554.7	6189.9	10109.7	169.8	223.7	864.3	1281.1	2308.0	1693.2	ארצות בלתי מסווגות
900															900

(1) Since July 1997 the data on trade with Hong-Kong should be added to the data on China.

(1) החל בחודש יולי 1997 יש לצרף לתוצנים על סין נתוני הסחר עם הונג קונג.

Table D 3. - Trade Countries,
by Countries and Country Group ⁽¹⁾

לוח ד 3. - ארצות הסחר,
לפי ארצות וקבוצת ארצות ⁽¹⁾

Million \$										מיליוני דולרים	
Imports					Exports						
יתר ארצות	אסיה	ארצות הברית	האיחוד האירופי	סך הכל	יתר ארצות	אסיה	ארצות הברית	האיחוד האירופי	סך הכל		
Other Countries	Asia	USA	European Union	Grand Total	Other Countries	Asia	USA	European Union	Grand Total		
Original data										נתונים מקוריים	
911.2	744.9	452.6	1,303.2	3,411.9	828.7	459.8	985.5	839.6	3,113.6	VI	2009
1,015.6	831.5	446.3	1,500.1	3,793.4	691.9	510.5	1,031.9	791.0	3,025.3	VII	
1,315.6	796.2	380.3	1,509.7	4,001.8	599.6	503.0	1,057.0	801.2	2,960.8	VIII	
1,057.6	742.1	408.5	1,148.3	3,356.4	618.8	597.2	1,123.2	770.0	3,109.2	IX	
1,012.2	831.9	397.9	1,280.4	3,522.4	565.5	614.5	1,252.1	999.3	3,431.4	X	
1,228.2	776.1	456.5	1,485.2	3,945.9	651.0	625.1	948.1	936.8	3,161.0	XI	
1,119.0	816.9	511.8	1,596.2	4,043.9	963.3	652.7	1,177.5	1,125.5	3,919.0	XII	
1,398.5	861.8	404.8	1,329.2	3,994.3	718.6	609.1	814.3	1,062.8	3,204.8	I	2010
1,007.9	835.2	397.5	1,382.8	3,623.4	606.6	603.8	834.9	982.8	3,028.1	II	
1,466.1	919.9	541.7	1,548.9	4,476.6	931.3	999.2	1,069.7	1,163.0	4,163.2	III	
1,281.2	829.5	482.6	1,397.1	3,990.4	737.6	567.6	1,119.9	1,056.9	3,482.0	IV	
1,271.5	1,000.8	497.9	1,379.9	4,150.1	714.0	643.4	969.3	1,021.5	3,348.2	V	
1,233.3	958.0	504.2	1,478.1	4,173.6	716.0	733.6	1,014.3	1,146.1	3,610.0	VI	
Seasonally adjusted data										נתונים מנוכי עונתיות	
935.9	695.7	434.2	1,214.9		749.2	435.9	953.8	795.7		VI	2009
968.4	731.2	449.9	1,345.2		661.5	477.0	1,014.9	814.9		VII	
1,041.2	708.3	387.3	1,407.0		626.2	531.9	1,044.1	922.0		VIII	
1,059.0	747.5	388.6	1,286.3		606.3	562.2	1,207.0	864.3		IX	
982.4	736.5	407.0	1,264.6		607.2	606.7	1,189.8	956.1		X	
1,260.7	800.2	426.4	1,400.0		686.9	605.0	925.3	942.3		XI	
1,140.2	795.7	473.0	1,463.6		907.0	576.7	977.3	1,024.3		XII	
1,450.1	889.9	417.8	1,431.6		805.1	691.5	937.5	1,025.7		I	2010
1,259.5	882.2	421.4	1,477.6		714.0	733.8	988.1	1,027.2		II	
1,384.0	976.2	512.3	1,524.0		832.2	857.2	988.5	973.9		III	
1,370.2	935.7	510.6	1,466.0		703.1	720.3	1,157.9	1,054.0		IV	
1,293.1	985.7	500.8	1,410.8		681.5	649.4	961.6	1,038.8		V	
1,281.2	982.9	496.7	1,434.0		672.9	693.1	963.9	1,065.4		VI	
Trend data - Million \$										נתוני מגמה - מיליוני דולרים	
930.3	686.9	398.0	1,209.3		643.8	458.7	990.8	798.1		VI	2009
956.3	697.6	396.7	1,233.7		649.8	486.9	1,014.2	817.5		VII	
996.5	716.2	397.2	1,266.2		656.1	520.1	1,030.3	845.9		VIII	
1,048.0	740.6	400.2	1,304.5		664.9	556.4	1,037.5	880.3		IX	
1,106.9	769.3	406.2	1,346.4		678.5	593.9	1,036.1	916.8		X	
1,167.8	801.4	415.8	1,388.1		696.9	630.4	1,028.9	951.5		XI	
1,224.5	835.9	429.3	1,424.9		717.5	663.8	1,020.0	981.6		XII	
1,271.8	871.1	445.4	1,452.8		736.6	692.3	1,013.3	1,005.0		I	2010
1,305.5	904.7	462.0	1,469.1		750.6	713.8	1,010.3	1,020.8		II	
1,324.8	934.4	477.0	1,474.2		758.0	726.7	1,010.0	1,029.4		III	
1,330.5	958.3	488.6	1,470.9		760.0	731.2	1,010.6	1,032.3		IV	
1,326.5	975.9	495.9	1,463.1		758.8	729.1	1,010.9	1,032.0		V	
1,318.9	988.3	499.5	1,454.6		756.7	724.2	1,010.3	1,030.9		VI	
Trend data - Percent change ⁽²⁾										נתוני מגמה - אחוז השינוי ⁽²⁾	
2.8	1.6	-0.3	2.0		0.9	6.1	2.4	2.4		VII	2009
4.2	2.7	0.1	2.6		1.0	6.8	1.6	3.5		VIII	
5.2	3.4	0.8	3.0		1.3	7.0	0.7	4.1		IX	
5.6	3.9	1.5	3.2		2.0	6.7	-0.1	4.1		X	
5.5	4.2	2.4	3.1		2.7	6.1	-0.7	3.8		XI	
4.9	4.3	3.2	2.7		3.0	5.3	-0.9	3.2		XII	
3.9	4.2	3.8	2.0		2.7	4.3	-0.7	2.4		I	2010
2.6	3.9	3.7	1.1		1.9	3.1	-0.3	1.6		II	
1.5	3.3	3.2	0.3		1.0	1.8	0.0	0.8		III	
0.4	2.6	2.4	-0.2		0.3	0.6	0.1	0.3		IV	
-0.3	1.8	1.5	-0.5		-0.2	-0.3	0.0	0.0		V	
-0.6	1.3	0.7	-0.6		-0.3	-0.7	-0.1	-0.1		VI	

(1) Excl. aircraft, ships and diamonds.

(2) Percent change on previous period.

(1) ללא אניות, מטוסים ויהלומים.

(2) השינוי באחוזים, כל תקופה לעומת קודמתה.

Table D 5. - Country Members of OECD - Imports and Exports

לוח ד 5 - מדינות חברות ב-OECD - יבוא ויבוא

Million \$		מיליון דולרים														
ממל	Countries	ISO	Imports					Exports					א ר צ ו ת	סמל		
			VI		I - VI		יבוא		VI		I - VI				יבוא	
			2010	2009	2010	2009	2009	2008	2010	2009	2010	2009			2009	2008
	Grand Total		4964.9	3958.0	28347.1	21284.9	47368.2	65173.2	5175.7	4143.0	29052.6	21853.8	47935.5	61339.1		
	Total OECD		3085.4	2687.8	17324.4	14184.0	30663.7	39990.9	3415.7	2782.6	19117.3	15240.6	33045.2	43065.1		
105	Austria	AT	23.1	35.0	127.3	145.5	267.3	399.2	13.3	7.0	62.0	41.3	99.9	99.9	אוסטריה	105
805	Australia	AU	7.0	10.4	76.1	78.2	178.7	240.4	45.9	34.1	244.6	170.9	432.7	711.3	אוסטרליה	805
005	Italy	IT	185.0	166.3	1137.4	998.6	2126.0	2553.7	113.7	100.6	730.5	554.9	1103.0	1668.8	איטליה	005
107	Iceland	IS	2.8	0.7	12.1	5.3	11.8	17.7	0.2	0.2	1.3	1.3	2.8	3.5	אייסלנד	107
007	Ireland	IE	48.0	44.8	253.2	223.6	473.1	415.1	9.4	8.4	42.7	50.3	92.4	99.9	אירלנד	007
505	USA	US	573.6	544.1	3137.8	2927.8	5849.1	8034.4	1644.1	1403.0	9245.9	7437.6	16774.1	19972.5	ארצות הברית	505
010	Belgium	BE	377.5	285.1	1776.9	1124.7	2567.8	4250.3	267.7	231.7	1544.6	1154.9	2371.8	4618.7	בלגיה	010
015	Germany	DE	289.5	269.7	1815.3	1418.2	3361.8	3940.5	155.4	112.0	804.9	689.8	1440.3	1950.6	גרמניה	015
017	Denmark	DK	17.9	19.2	105.3	89.8	200.8	215.4	8.5	10.3	53.4	71.9	136.2	167.0	דנמרק	017
020	Netherlands	NL	192.5	148.7	1026.2	881.8	1885.4	2465.3	149.8	115.8	965.2	763.9	1550.8	2035.0	הולנד	020
235	Hungary	HU	18.9	25.5	133.3	115.5	252.4	288.8	6.7	6.8	54.0	66.8	113.1	174.5	הונגריה	235
023	United Kingdom	GB	220.9	182.6	1124.6	861.8	1907.2	2519.9	223.2	119.1	1048.1	670.9	1423.5	1892.7	הממלכה המאוחדת	023
324	Turkey	TR	152.5	118.8	907.1	668.5	1387.7	1825.3	117.9	87.7	675.8	533.6	1086.0	1609.9	טורקיה	324
245	Greece	GR	25.4	12.4	105.4	101.4	200.7	221.4	43.7	32.3	117.2	149.7	295.3	301.0	יוון	245
327	Japan	JP	143.3	145.2	861.6	709.3	1523.7	2226.7	51.9	41.0	292.5	255.1	527.6	883.0	יפן	327
025	Luxembourg	LU	15.0	3.2	100.9	48.1	117.0	174.0	1.6	1.0	8.1	4.5	10.8	20.4	לוקסמבורג	025
723	Mexico	MX	13.7	9.1	71.3	56.3	117.8	115.8	22.7	37.9	148.9	133.8	271.7	329.3	מקסיקו	723
120	Norway	NO	3.8	3.6	22.9	25.6	52.0	52.4	4.6	5.7	36.0	35.5	61.4	75.6	נורבגיה	120
810	New Zealand	NZ	0.6	1.2	4.7	6.6	12.9	21.8	3.2	2.9	17.6	21.7	59.5	67.8	ניו זילנד	810
272	Slovakia	SK	9.4	7.7	30.7	27.9	60.9	49.4	1.2	1.0	7.3	8.0	23.4	28.5	סלובקיה	272
260	Spain	ES	83.0	65.9	451.3	393.7	880.1	959.1	113.2	87.0	580.1	407.4	940.5	1108.0	ספרד	260
265	Poland	PL	22.2	12.4	116.5	72.1	169.8	152.8	30.9	11.8	110.1	115.9	202.2	287.2	פולין	265
125	Portugal	PT	9.3	9.7	42.2	43.0	100.1	114.2	8.0	7.2	53.8	51.9	111.3	98.9	פורטוגל	125
130	Finland	FI	34.1	28.6	184.3	152.6	332.6	370.2	7.4	14.0	70.4	57.5	121.1	169.1	פינלנד	130
731	Chile	CL	7.3	2.8	23.4	12.9	31.7	32.5	7.0	11.3	38.3	36.1	68.3	119.9	צ'ילה	731
271	Czech Republic	CZ	28.4	21.8	118.7	77.8	188.0	165.6	17.6	13.6	80.9	67.7	132.3	161.6	צ'כיה	271
030	France	FR	106.5	104.9	661.5	652.4	1428.7	1889.2	95.5	89.8	657.8	546.8	1110.6	1298.0	צרפת	030
372	South Korea	KR	96.4	82.6	533.4	411.7	871.1	1103.2	87.7	77.4	445.5	340.4	841.0	818.5	קוריאה הדרומית	372
510	Canada	CA	39.0	19.4	204.8	137.4	294.4	509.4	63.0	51.4	351.3	271.6	578.3	901.7	קנדה	510
135	Sweden	SE	50.9	45.0	296.3	242.4	523.1	693.6	12.1	7.9	77.5	56.7	121.0	181.9	שוודיה	135
140	Switzerland	CH	287.9	261.4	1861.9	1473.5	3290.0	3973.6	88.6	52.6	549.0	472.2	942.3	1210.4	שווייץ	140
	Excl. Diamonds		4175.8	3464.9	24419.0	19364.2	42050.1	55808.5	3610.0	3113.6	20836.3	16721.1	36336.6	41941.3		ללא יהלומים
	Grand Total		4175.8	3464.9	24419.0	19364.2	42050.1	55808.5	3610.0	3113.6	20836.3	16721.1	36336.6	41941.3		
	Total OECD		2606.3	2374.2	15085.7	12998.0	27503.7	34145.4	2464.1	2101.6	13737.8	11687.9	25215.8	29347.0		
105	Austria	AT	22.7	35.0	126.7	145.1	266.3	397.0	12.4	6.7	59.5	40.0	96.7	95.4	אוסטריה	105
805	Australia	AU	7.0	9.9	75.9	77.7	177.8	198.6	39.6	28.4	208.0	144.7	366.3	606.2	אוסטרליה	805
005	Italy	IT	184.3	165.6	1136.2	992.7	2118.7	2534.6	109.5	95.5	698.5	523.4	1044.9	1597.4	איטליה	005
107	Iceland	IS	2.8	0.7	12.1	5.3	11.8	17.7	0.2	0.2	1.3	1.3	2.2	3.5	אייסלנד	107
007	Ireland	IE	48.0	44.8	253.2	223.6	473.1	415.1	9.4	8.4	42.7	50.3	92.4	99.9	אירלנד	007
505	USA	US	504.6	502.4	2834.1	2745.9	5352.1	7067.3	1014.3	985.5	5822.4	5255.4	11846.4	11601.2	ארצות הברית	505
010	Belgium	BE	120.5	112.7	660.8	544.4	1166.2	1371.1	72.4	55.6	402.3	426.2	811.3	1201.6	בלגיה	010
015	Germany	DE	289.1	269.7	1813.7	1418.2	3359.5	3938.9	152.6	108.6	785.1	668.9	1399.5	1901.7	גרמניה	015
017	Denmark	DK	17.9	19.2	105.2	89.8	200.8	215.1	8.5	10.3	52.5	71.3	132.8	164.5	דנמרק	017
020	Netherlands	NL	192.5	148.7	1026.2	881.8	1885.4	2465.3	149.6	115.7	964.5	763.7	1550.3	2031.0	הולנד	020
235	Hungary	HU	18.9	25.5	133.3	115.5	251.9	288.7	6.7	6.8	54.0	66.7	112.9	174.0	הונגריה	235
023	United Kingdom	GB	162.8	125.1	849.2	667.5	1459.7	1765.7	208.3	101.6	927.0	600.1	1265.2	1619.8	הממלכה המאוחדת	023
324	Turkey	TR	152.5	118.6	906.6	668.0	1387.2	1823.2	117.2	86.7	667.5	528.1	1070.7	1586.4	טורקיה	324
245	Greece	GR	25.4	12.4	105.4	101.4	200.7	221.2	43.7	31.8	116.5	148.4	292.6	294.3	יוון	245
327	Japan	JP	142.8	144.8	856.3	706.1	1513.9	2210.2	48.2	36.3	271.3	222.4	472.7	796.3	יפן	327
025	Luxembourg	LU	15.0	3.2	100.9	48.1	117.0	174.0	1.6	1.0	8.1	4.5	10.8	20.4	לוקסמבורג	025
723	Mexico	MX	13.7	9.1	71.3	56.3	117.8	115.8	22.7	37.9	148.9	130.8	268.7	329.2	מקסיקו	723
120	Norway	NO	3.8	3.6	22.9	25.6	52.0	52.4	4.2	5.4	35.7	34.5	59.0	73.7	נורבגיה	120
810	New Zealand	NZ	0.6	1.2	4.7	6.6	12.8	21.8	3.1	2.8	16.0	21.0	57.8	65.5	ניו זילנד	810
272	Slovakia	SK	9.4	7.7	30.7	27.9	60.9	49.4	1.2	1.0	7.3	8.0	23.4	28.5	סלובקיה	272
260	Spain	ES	83.0	65.9	451.3	393.6	879.3	958.9	111.7	86.5	575.7	404.5	933.7	1092.4	ספרד	260
265	Poland	PL	22.2	12.4	116.5	72.1	169.8	152.8	30.9	11.8	109.9	115.3	201.5	284.9	פולין	265
125	Portugal	PT	9.3	9.7	42.1	43.0	100.1	114.2	8.0	7.2	53.7	51.9	111.3	98.9	פורטוגל	125
130	Finland	FI	34.1	28.6	184.3	152.6	332.6	370.2	7.3	13.9	69.7	56.9	119.8	167.8	פינלנד	130
731	Chile	CL	7.3	2.8	23.4	12.9	31.7	32.5	7.0	11.3	38.0	35.7	67.5	119.6	צ'ילה	731
271	Czech Republic	CZ	28.4	21.8	118.7	77.8	188.0	165.6	17.6	13.6	80.2	66.8	131.0	158.9	צ'כיה	271
030	France	FR	106.2	104.9	661.1	652.2	1426.8	1882.0	91.1	85.5	611.5	521.2	1052.1	1162.6	צרפת	030
372	South Korea	KR	96.4	82.6	533.4	411.7	871.1	1102.9	87.0	77.1	441.7	337.9	833.7	809.3	קוריאה הדרומית	372
510	Canada	CA	30.0	19.3	164.1	136.5	291.9	496.1	56.7	47.0	321.8	248.0	523.3	810.8	קנדה	510
135	Sweden	SE	50.9	45.0	296.3	242.4	523.1	693.6	11.6	7.9	76.8</					