

Media Release

info@cbs.gov.il; www.cbs.gov.il; Fax: 02-6521340

Jerusalem
30 December, 2021
447/2021

Population of Israel on the Eve of 2022

According to Central Bureau of Statistics estimates

- On 31 December, 2021, Israel's population is estimated at 9,449,000 residents.¹
- 6,982,000 are Jews (73.9% of the total population), 1,995,000 - Arabs (21.1%) and 472,000 Others (5.0%).²
- During 2021, Israel's population increased by 1.7%. 83% of the increase was due to natural growth³ and 17% was from the international migration balance.⁴
- During the year, approximately 184,000 infants were born (73.8% born to Jewish mothers, 23.4% to Arab mothers and 2.8% to mothers of Others).
- Approximately 25,000 new immigrants⁵ arrived in Israel during 2021 as well as approximately 9,000 other migrants (returning citizens⁶ and persons who immigrated under the Entry Law).

During 2021, approximately 160,000 persons were added to the Israeli population, an increase of 1.7%. Most of the increase (83%) of the Israeli population was due to natural growth³ and the rest (17%) to the international migration balance.⁴ During the year, 184,000

¹ The population estimates for the end of 2021 are temporary and do not include the population of foreign workers living in Israel. The foreign population was estimated at 167,000 at the end of 2019. Also, the population estimate does not include people who entered the country without a residence permit and not through recognized border crossings.

² "Others" include non-Arab Christians and persons not classified by religion in the Population Register.

³ Natural growth: The difference between births and deaths.

⁴ International migration balance: The difference between the number of residents entering the State of Israel and the number of persons leaving.

⁵ Excluding returning citizens.

⁶ Returning citizen: A person who was born to an Israeli citizen while he or she was staying abroad and entered Israel with the intention of permanent residence.

infants, 25,000 immigrants (as opposed to 20,000 last year) and approximately 9,000 other migrants were added to the population. The population was reduced by approximately 51,000 persons who died and approximately 7,500 Israelis who were staying abroad for more than a year.

Births

During 2021, approximately 184,000 infants were born (73.8% born to Jewish mothers, 23.4% to Arab mothers and 2.8% to mothers of Others).

Deaths

Approximately 51,000 people died in 2021. The number of deaths is high, compared to previous years, and even higher than in 2020 (48,780), the year that the COVID-19 pandemic began. The death rate, relative to population size, increased from 5.1 per 1,000 residents in 2017–2019 to 5.4. According to Ministry of Health data, up to the middle of November about 4,800 residents died as a result of COVID-19.

Diagram 1 - Deaths and Deaths from COVID-19, by Month, 2019–2021

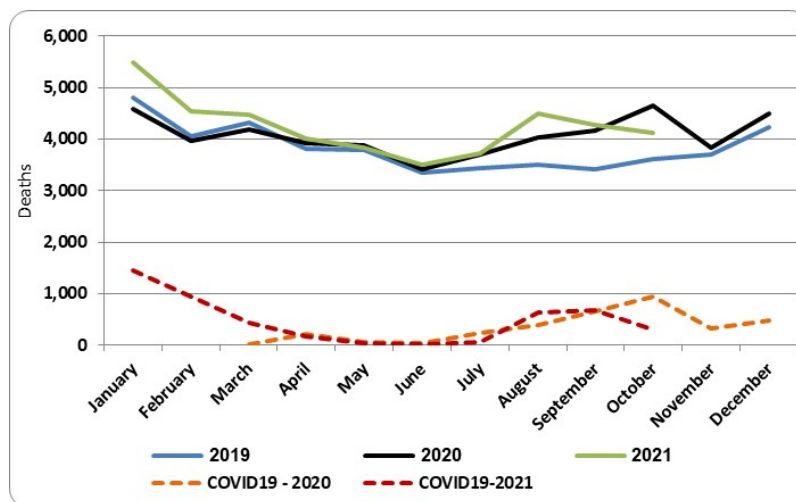
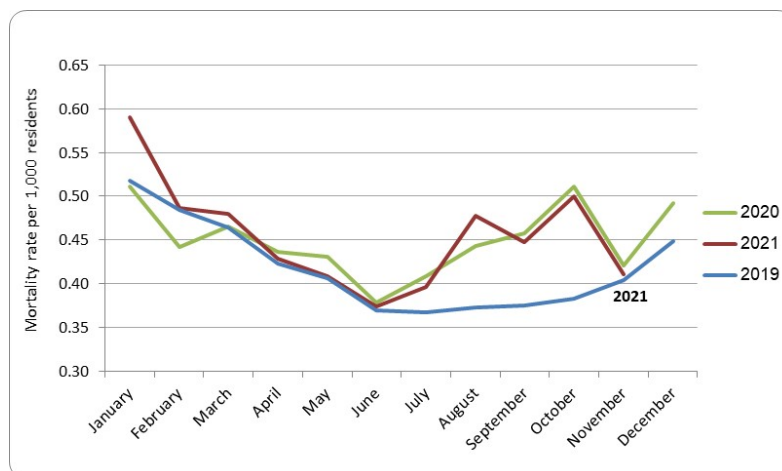


Diagram 2 - Mortality Rate by Month,* 2019-2021



Immigrants

The main countries from which immigrants came this year were: Russia (30.0%), France (14.6%) the US (13.9%), and Ukraine (12.4%).

During the first eleven months of 2021 (January–November), 22,700 immigrants arrived in Israel – an increase of 28.8% compared to the parallel period in 2020.

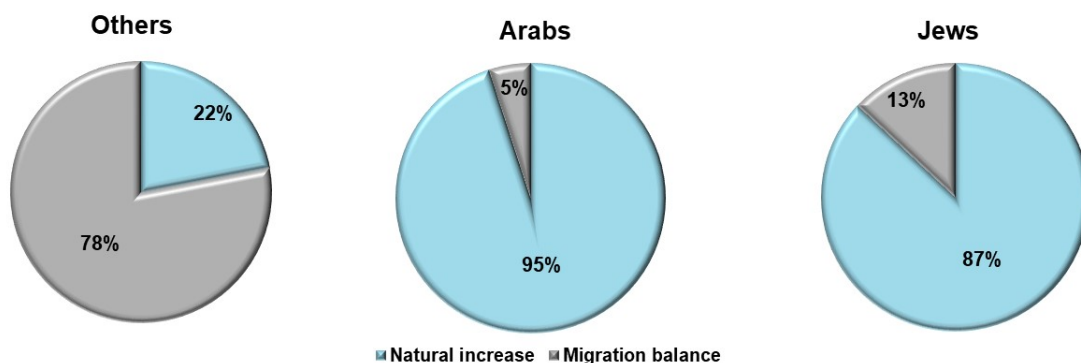
Diagram 3 - Immigrants to Israel January-November, 2019-2021



Sources of Growth

Among Jews, 87% of the population increase was due to natural growth,⁷ among Arabs it was 95% and among Others 22% was due to natural growth and the main increase was a result of immigration.

Diagram 4 - Sources of Growth, by Population Group, 2021



⁷ This datum is lower than previous years, due to the decrease in the number of immigrants.