

Media Release

info@cbs.gov.il; www.cbs.gov.il; Fax: 02-6521340

Jerusalem
29 December, 2022
426/2022

Population of Israel on the Eve of 2023

According to Central Bureau of Statistics estimates:

- On 31 December, 2022, Israel's population is estimated at 9,656,000 residents.¹
- 7,106,000 are Jews (73.6% of the total population), 2,037,000 - Arabs (21.1%) and 513,000 Others (5.3%).²
- During 2022, Israel's population increased by 2.2%; 62% of the increase was due to natural growth³ and 38% was from the international migration balance.⁴
- The population increased much more in 2022 than in 2021, when it increased by 1.8%. This was mostly due to the larger number of immigrants in 2022 than in 2021.
- During the year, approximately 178,000 infants were born (74.8% born to Jewish mothers, 23.8% to Arab mothers and 1.4% to mothers of Others).
- Approximately 73,000 new immigrants⁵ arrived in Israel during 2022, 80% arrived from Russia and Ukraine.

During 2022, approximately 204,000 persons were added to the Israeli population, an increase of 2.2%. Most of the increase (62%) of the Israeli population was due to natural growth³ and the rest (38%) to the international migration balance.⁴ During the year, 178,000 infants, 73,000 immigrants (as opposed to 25,000 last year) were added to the population. The population was reduced by approximately 52,000 persons who died and approximately 4,000 Israelis who were staying abroad for more than a year.

¹ The population estimates for the end of 2022 are temporary and do not include the population of foreign workers living in Israel. The foreign population was estimated at 204,000 at the end of 2021. Also, the population estimate does not include people who entered the country without a residence permit and not through recognized border crossings.

² "Others" include non-Arab Christians and persons not classified by religion in the Population Register.

³ Natural growth: The difference between births and deaths.

⁴ International migration balance: The difference between the number of residents entering the State of Israel and the number of persons leaving.

⁵ Excluding immigrating citizens (An immigrating citizen is a person, born to an Israeli citizen during his stay abroad, who enters Israel with the intention to settle).

For more information, please contact the Statistical Information Center at 02-659-2666

Births

During 2022, approximately 178,000 infants were born (74.8% born to Jewish mothers, 23.8% to Arab mothers and 1.4% to mothers of Others).

Deaths

Approximately 51,700 people died in 2022. The number of deaths was similar to 2021 and higher than in 2020 (48,800), the year that the Coronavirus (COVID-19) pandemic began. There were 46,000 deaths in 2019 (the numbers do not include deaths of Israelis abroad).

The death rate, relative to population size, increased from 5.1 per 1,000 residents in 2019 to 5.4 per 1,000 residents in 2022. According to Ministry of Health data, up to the middle of December 2022 about 3,670 residents died as a result of COVID-19. Since the beginning of the pandemic, there was a total of approximately 11,850 deaths.

Diagram 1 - Deaths and Deaths from COVID-19, by Month, 2019–2022

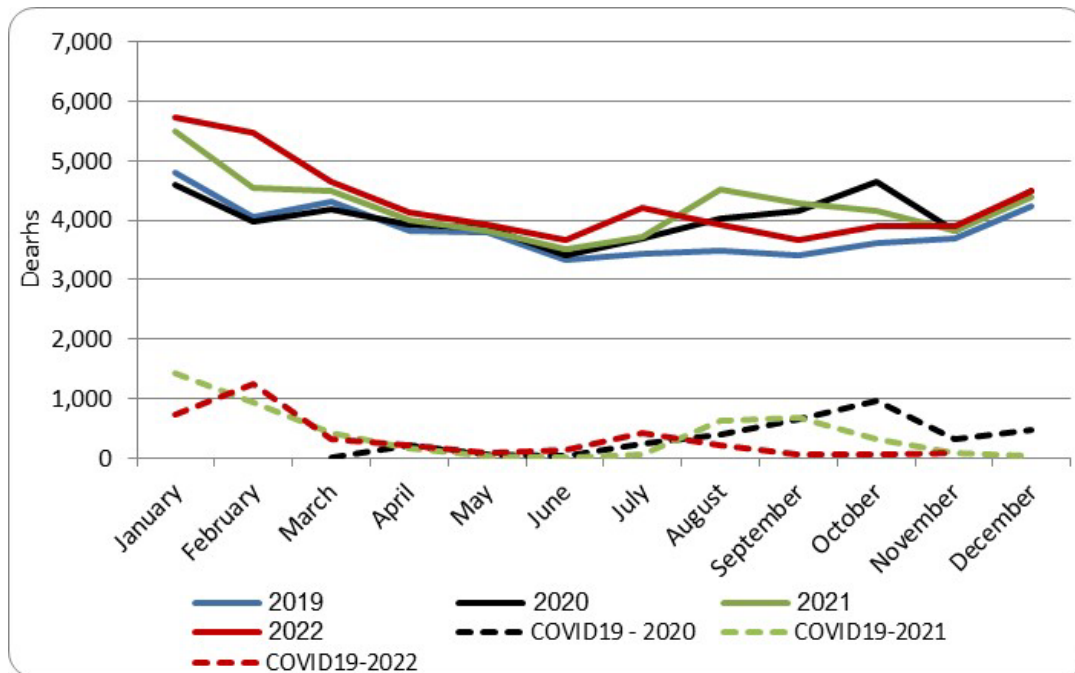
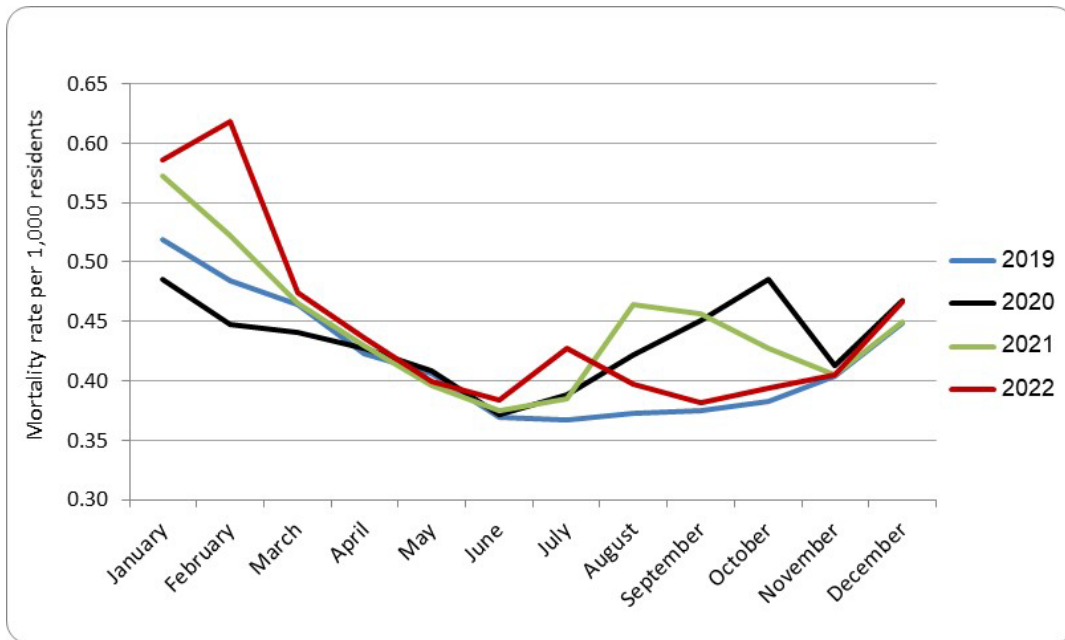


Diagram 2 - Mortality Rate by Month,⁶ 2019-2022

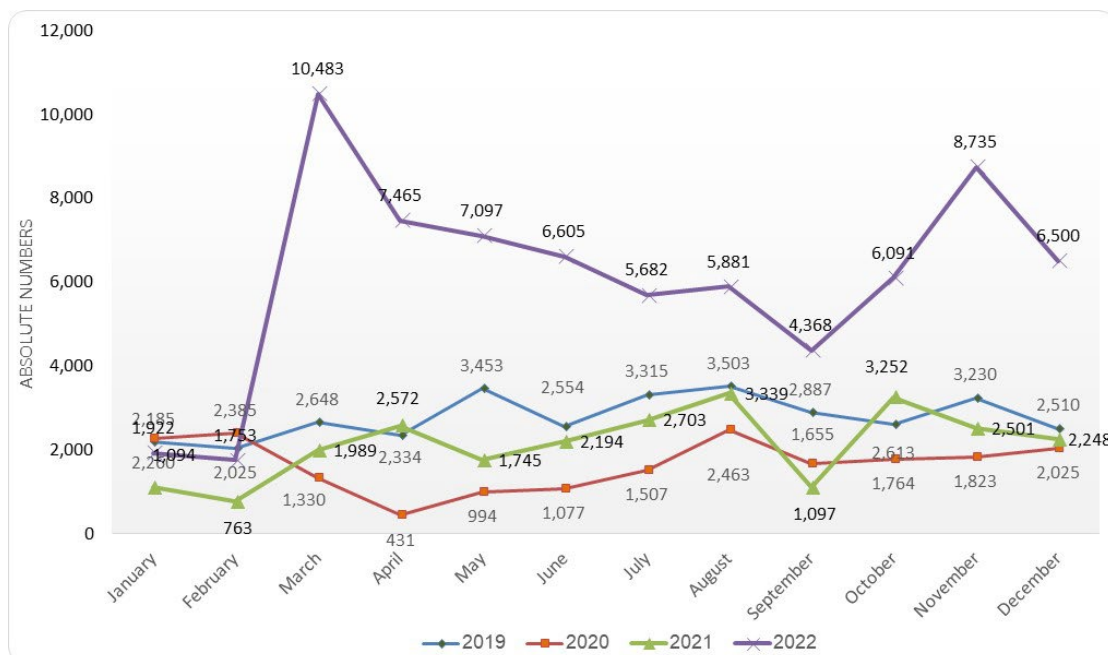


Immigrants

During 2022, there were approximately 73,000 immigrants to Israel, three times as many as the year before. The growth can be attributed to the Russia-Ukraine crisis as of the end of February 2022, with the beginning of the war between them.

The main countries from which immigrants came this year were: Russia (58.1%), Ukraine (21.3%), the US (4.1%), and France (3.2%).

Diagram 3 - Immigrants to Israel, by Month, 2019-2022

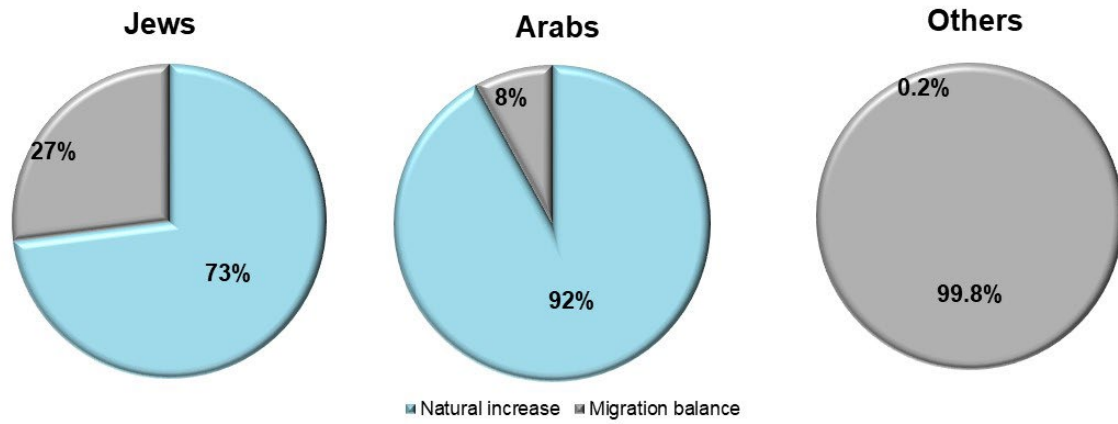


⁶ Mortality rate is the number of deaths at a certain age, divided by the average population of the same age.

Sources of Growth

Among Jews, 73% of the population increase was due to natural growth,⁷ among Arabs – 92%, and among Others, almost 100% of the increase was due to immigration.

Diagram 4 - Sources of Growth, by Population Group, 2022



⁷ This datum is lower than previous years, due to the decrease in the number of immigrants.