

Media Release

info@cbs.gov.il www.cbs.gov.il Fax: 02-6521340

Jerusalem,
February 14, 2020
046/2020

Decrease of 0.4% in the Consumer Price Index, January 2020

- The CPI decreased 0.4% in January 2020 compared to December 2019. It was 100.4 points compared to 100.8 points in the previous month (base: average 2018 = 100.0 points). The CPI excluding housing has also decreased 0.4% and was 99.6 points. The CPI excluding vegetables and fruit decreased 0.5% and was 100.3 points and the CPI excluding energy decreased 0.3% and was 100.6 points.
- Prices of the following items decreased in particular: clothing and footwear 6.4%, culture and entertainment 0.8% and food 0.5%.
- Prices of the following items increased in particular: fresh fruit and vegetables 3.1%.
- Over the past 12 months (January 2020 compared to January 2019) the CPI increased 0.3%, the CPI excluding vegetables and fruit increased 0.4%, the CPI excluding energy increased 0.2%; in contrast the CPI excluding housing decreased 0.3%.
- In January 2020 the seasonally adjusted CPI remained unchanged; in contrast the seasonally adjusted CPI excluding housing and the seasonally adjusted CPI excluding vegetables, fruit and housing decreased 0.1%, each.
- Based on the trend data for the period October 2019 – January 2020, the annual pace of increase in the CPI was 0.3%; in contrast the annual pace of decrease in the CPI excluding housing was 0.6% and the annual pace of decrease in the CPI excluding vegetables, fruit and housing was 0.9%.

Please note: This Press Release is for Publication

After 14:00 PM on Friday, February 14, 2020

Diagram 1 – Monthly Percentage Change in CPI during the Past 12 Months

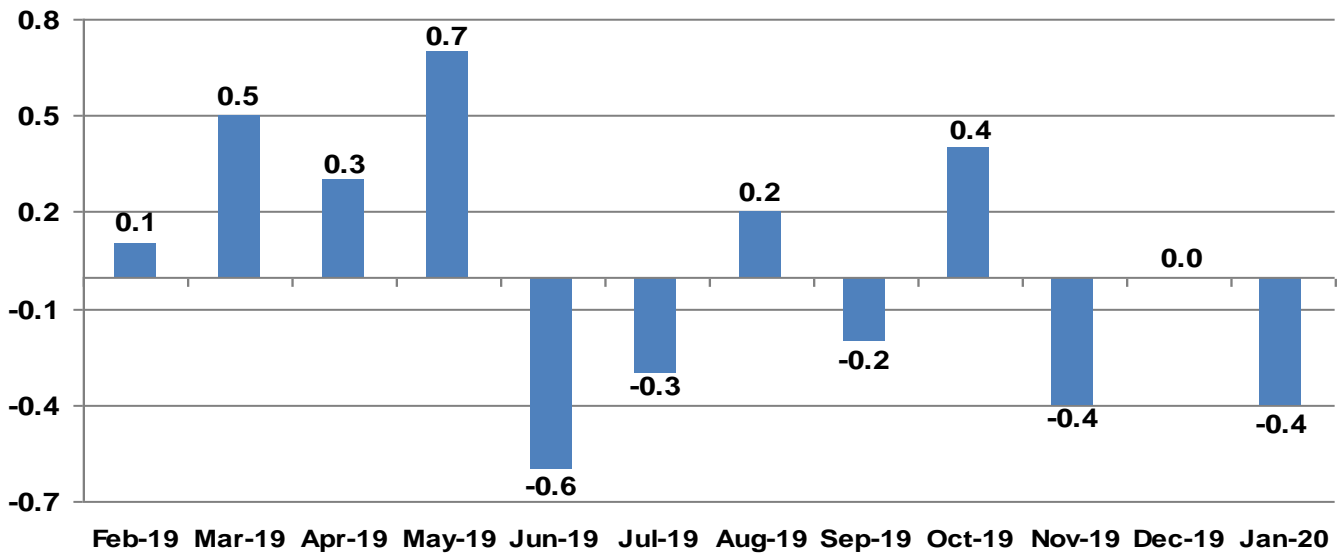
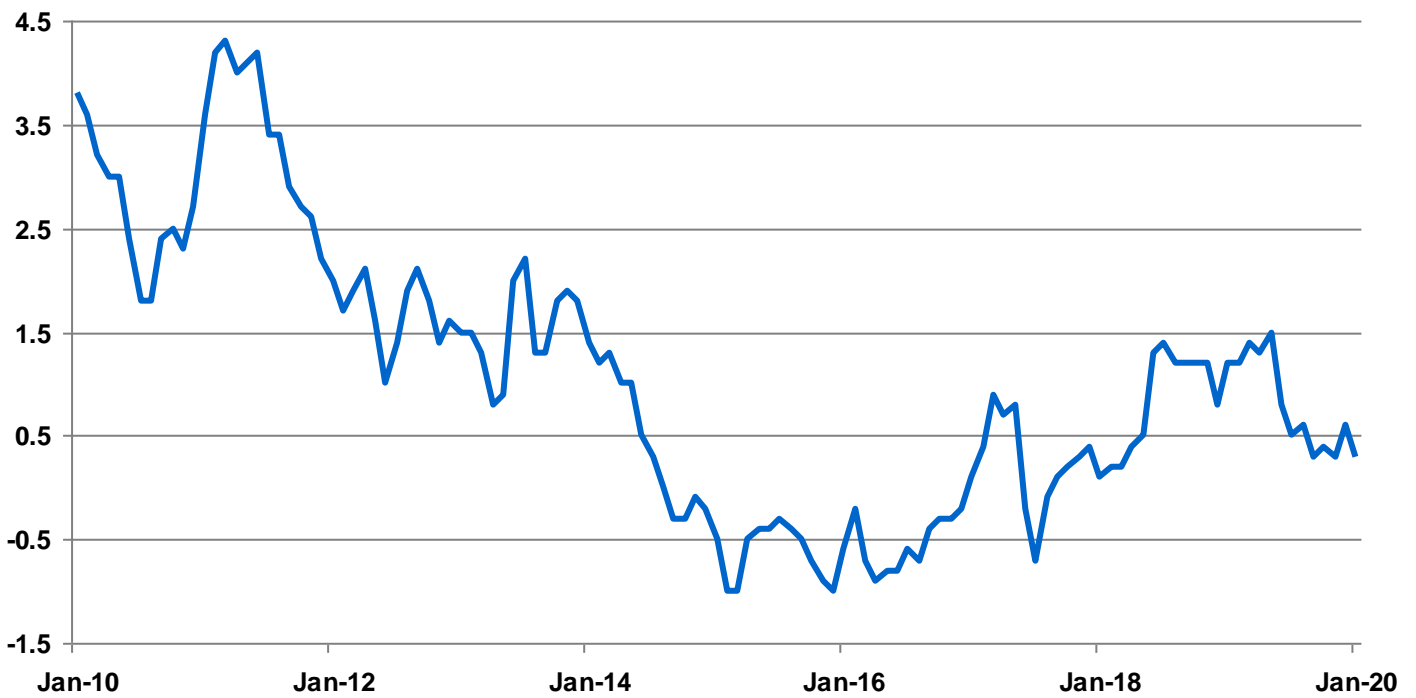


Diagram 2 – CPI 12-Month Inflation Rate for the Past 10 Years



Product and Service Groups that Particularly Influenced the Index This Month:

<i>Product / Service Group</i>	<i>Percentage Change</i>	<i>Contribution to Index's Percentage Change</i>
clothing	-6.4	-0.1556
owned dwellings services	-0.6	-0.1025
electricity	-4.0	-0.0935
recreation, holidays and trips	-6.6	-0.0471
footwear	-6.4	-0.0399
water and sewage services	3.6	0.0311
municipal property taxes for dwelling	1.8	0.0426
fresh fruit and vegetables	3.1	0.0772

Major Changes in Primary Consumption Items

Food (excluding vegetables and fruit)

The food price index decreased 0.5%.

The following decreased in particular: processed and other cheeses (3.9%), malt beer (3.1%), beer (2.9%), soup mixes and prepared dishes (2.9%), biscuits, cakes, cookies, etc. (2.6%), beef, internal parts (2.2%), tea (2.2%), other meat (mutton and pork) (2.1%), prepared vegetable salads (2.0%), sweets and chocolate (1.9%), vinegar, mustard, sauces, and dressings (1.9%), canned and processed fish (1.4%), cheese and milk desserts (1.4%), products at kiosks and convenience stores (1.4%), baking and cake decorating products (1.3%), beef, fresh (1.2%), chicken and parts thereof (1.2%), fish (1.2%) and brined cheese (1.0%).

The following increased in particular: various cereals (2.7%), ice cream (1.9%), pastry products (1.3%), jam and confiture (1.2%), beef, minced (1.1%) and non-kosher processed meat products (1.1%).

Vegetables and Fruit

The vegetables and fruit index increased 2.5%.

The fresh vegetables index increased 3.8% and the fresh fruit index increased 2.3%. The frozen, pickled and canned vegetables index increased 0.3% and the dried, preserved and frozen fruit index increased 0.2%.

Among the fresh vegetables, the following increased in particular: squash (10.2%), corn on the cob (9.3%), eggplant (9.1%), artichoke (8.0%), cabbage (7.6%), pumpkin and butternut squash (7.4%), tomatoes (6.1%), onions (6.1%), kohlrabi (5.6%), peppers (5.1%), cucumbers (4.0%), potatoes and sweet potatoes (2.4%), fennel (2.4%), broccoli (2.2%), beans (2.1%), leaf vegetables (1.9%), beets (1.6%), radishes (1.6%) and lettuce (1.0%).

The following decreased in particular: cauliflower (9.9%) and garlic (1.6%).

Among the fresh fruit, the following increased in particular: bananas (13.8%), clementine (6.1%), sugar melons (5.0%), persimmons (2.6%), avocados (1.9%), apples (1.6%) and pomegranates (1.6%).

The following decreased in particular: lemons (8.4%), kiwi (5.0%), grapefruit (3.8%) and pomelos (1.4%).

Among the processed vegetables and fruit, the following increased in particular: peanuts (5.1%) and frozen vegetables (2.0%).

The following decreased in particular: dried fruit (2.4%).

Housing

The housing price index decreased 0.4%.

The owned dwellings services index decreased 0.6%; in contrast the rent index increased 0.2%.

Owned Dwellings Services

The owned dwellings services index showed a decrease in January 2020 compared to December 2019. This decrease reflects the changes in rental prices set in contracts signed in December 2019 – January 2020, compared to contracts signed in November 2019 – December 2019.

Dwelling Maintenance

The dwelling maintenance index decreased 0.1%.

The municipal taxes index increased 1.8% in January 2020. This increase reflects the difference between the actual rate of increase of payments of municipal taxes on dwellings in January 2020 compared to January 2019 which increased 2.4%, and the estimate of change that was calculated during this period.

The following increased in particular: water and sewage services for domestic consumption (3.6%), deodorizers (1.2%), disinfectants and pesticides (1.1%) and kerosene for heating (1.0%).

The following decreased in particular: electricity (4.0%), other laundry products (1.6%), dishwashing products (1.3%) and other cleaning materials (1.1%).

Furniture and Household Equipment

The furniture and household equipment index decreased 0.2%.

The following decreased in particular: tablecloths and napkins (11.0%), bedding and towels (4.5%), mugs, cups, and glasses (1.5%), curtains and upholstery fabrics (1.5%), lampshades, chandeliers and table lamps (1.4%), heating stoves (1.0%) and serving dishes and storage containers (1.0%).

The following increased in particular: candles and air fresheners (3.9%), outdoor furniture (3.3%), flowers and plants (2.4%), buffets (1.2%), vase (1.2%) and chairs (1.1%).

Clothing and Footwear

The clothing and footwear index decreased 6.4%; the seasonally adjusted index increased 1.0%.

The clothing index and the footwear index decreased 6.4%, each.

Among clothing item, the following decreased in particular: miscellaneous clothing such as hats, scarves, and ties (8.1%), outerwear (7.2%), sports and exercise clothes (3.4%), fabrics and sewing accessories (2.2%), underwear (1.7%) and socks (1.1%).

Among footwear item, the following decreased in particular: men's footwear (7.9%), children's footwear (7.2%) and women's footwear (5.0%).

Health

The health index increased 0.1%.

The following increased in particular: sunglasses (4.5%), contact lenses and solutions (2.7%) and oral hygiene products (1.8%).

The following decreased in particular: medical and health items (1.1%).

Education, Culture and Entertainment

The education, culture and entertainment index decreased 0.5%.

The education services index decreased 0.2% and the culture and entertainment index decreased 0.8%.

The following decreased in particular: recreation, holidays and trips (6.6%), audio-visual systems (1.7%) and computers and peripheral equipment (1.1%).

The following increased in particular: fiction and nonfiction books (6.6%), museum entrance tickets (3.2%), admissions to parks or amusement parks (1.7%), tickets or subscription to sporting event (1.4%), toys (1.2%) and magazines and journals (1.0%).

Transport and Communication

The transport and communication index decreased 0.1%.

The transport index decreased 0.1% and the communication index decreased 0.2%.

The following decreased in particular: car rental for domestic travel (13.5%), domestic flights (4.6%) and phone products and repairs (1.1%).

The following increased in particular: expenditures on passport issuance and renewal (1.0%).

Miscellaneous

The miscellaneous index decreased 0.3%.

The following decreased in particular: diapering products and accessories for babies (1.9%) and bathing products and cosmetics (1.4%).

The following increased in particular: jewellery (1.3%) and bags, school bags, etc. (1.0%).

The price indices will be published at the following times during the next 12 months:

Index for Month	To be published on date	Time
February 2020	Sunday, March 15, 2020	18:30
March 2020	Tuesday, April 14, 2020	14:00
April 2020	Friday, May 15, 2020	14:00
May 2020	Monday, June 15, 2020	18:30
June 2020	Wednesday, July 15, 2020	18:30
July 2020	Friday, August 14, 2020	14:00
August 2020	Tuesday, September 15, 2020	18:30
September 2020	Thursday, October 15, 2020	18:30
October 2020	Sunday, November 15, 2020	18:30
November 2020	Tuesday, December 15, 2020	18:30
December 2020 and Annual Summary of 2020	Friday, January 15, 2021	14:00
January 2021	Monday, 15 February 2021	18:30