



הלשכה המרכזית לסטטיסטיקה  
Central Bureau of Statistics  
دائرة الإحصاء المركزية



מדינת ישראל  
STATE OF ISRAEL

# NATIONAL EXPENDITURE ON HEALTH 1962–2021

PUBLICATION No. 1887  
[www.cbs.gov.il](http://www.cbs.gov.il)

Jerusalem, January 2023

Copyright © 2023 The State of Israel

ISSN 1565-2181

## PREFACE

This publication presents findings accompanied by tables and diagrams on the national expenditure on health for the years 1962–2021. It includes tables presenting continuous multi-annual series for the entire period and up-to-date detailed tables for the years 1990–2020.

This publication also includes findings from an international comparison carried out by the OECD, which reveals the scope of health expenditure in Israel, compared with other developed countries.

The data show the amount of resources allocated to health services, by type of service and expenditure. The national expenditure on health is presented by the sectors which supplied the services and those that financed them.

From the data gathered, it is possible to examine the increase in the expenditure on health over the years surveyed, distinguishing between quantity changes and the rise in the cost of various health services.

The Central Bureau of Statistics wishes to thank all health institutions that collaborated in supplying the necessary data and all those who assisted in this project – in the Ministry of Health and in the Central Bureau of Statistics.

Noemi Frisch Tsekhman  
Director of Senior Department  
Macro-Economic Statistics

Jerusalem, 2023

## **Staff of the Central Bureau of Statistics who Participated in Preparing the Publication**

### **Senior Department**

**of Macro-Economic Statistics:** Noemi Frisch Tsekhman – Director of Senior Department  
Galina Braverman – Director of Senior Sector

### **Expenditure on Social**

**Services Accounts Sector:** Merav Katz – Director of Sector  
Taina Trahtenberg – Professional Director of Sector

### **Publications Department:**

Dalit Goldfus – Editing  
Dan Golan – Translation  
Tamar Ben Yishai – Design and Preparation for Internet

For further information regarding this publication,  
please contact the Statistics Information Center: [info@cbs.gov.il](mailto:info@cbs.gov.il)

# CONTENTS

	Page
<b>INTRODUCTION</b>	
1. General.....	(9)
2. Main Findings .....	(10)
3. Terms, Definitions and Explanations .....	(13)
4. Sources of the Data and Methods .....	(21)
5. Reliability of the Estimates.....	(24)
6. Revisions of Definitions and Classifications.....	(25)
7. Comparison With Previous Publications .....	(26)
<b>DIAGRAMS</b>	
1. National Expenditure on Health, as Percentage of GDP, 1995–2021 .....	(29)
2. National Expenditure on Health per Capita, Quantity Change, 1995–2021 ....	(29)
3. National Expenditure on Health, at 2015 Prices, 1992–2021 .....	(30)
4. Current Expenditure on Health, by Type of Service, at Current Prices, 2020.....	(30)
5. National Expenditure on Health, by Operating Sector, 2020 .....	(31)
6. Fixed Capital Formation in the Health System, at 2015 Prices, 1992–2021 ...	(31)
7. National Expenditure on Health, by Financing Sector, 1998–2021.....	(32)
8. Expenditure of the Government and Local Authorities, Health Maintenance organizations and Private NPIs on Health Services, by Type of Expenditure, 2020.....	(32)
9. Current National Expenditure on Health, as Percentage of GDP – International Comparison, 2021.....	(33)
10. Current National Expenditure on Health per Capita – International Comparison, 2021 .....	(34)

**TABLES** (presented in Hebrew order – from right to left)

<b>Explanatory Notes and Special Symbols</b> .....	(37)
1. National Expenditure on Health, by Operating Sector (New Classification), at Current Prices, 2003–2021 .....	35
1A. National Expenditure on Health, by Operating Sector (Previous Classification), at Current Prices, 1962/63–2021 .....	36
2. National Expenditure on Health, by Type of Expenditure and Service at 2015 Prices, 1972/73–2021 .....	37
3. National Expenditure on Health, by Type of Expenditure and Service, at Current Prices, 1962/63–2021 .....	38
4. National Expenditure on Health, by Operating Sector, Type of Expenditure and Service, at Current Prices, 2019–2020 .....	40
5. National Expenditure on Health, by Financing Sector, at Current Prices, 1995–2021 .....	41
6. National Expenditure on Health, Supply and Finance, by Sector, at Current Prices, 2019–2020 .....	42
7. Receipts and Disbursements in Health Services of the Government and Local Authorities and of Health Maintenance organizations – Consolidated Account, at Current Prices, 2016–2020 .....	44
8. Receipts and Disbursements in Health Services of the Government and Local Authorities, of Health Maintenance organizations, and of Private NPIs, at Current Prices, 2019–2020 .....	45
9. National Expenditure on Health, by Operating Sector (New Classification), at 2015 Prices, 2003–2021 .....	46
9A. National Expenditure on Health, by Operating Sector (Previous Classification), at 2015 Prices, 1995–2021 .....	47
10. Expenditure of the Government and Local Authorities, of Health Maintenance organizations and of Private NPIs on Health Services, by Type of Expenditure, at Current Prices, 2019–2020 .....	48
11. Supply of Medicines, Medical Supplies and Medical Equipment (Including Supply as Part of Medical Treatment), at Current Prices, 2000–2020 .....	49
11A. Direct Purchase of Medicines, Medical Supplies and Medical Equipment by Households, at Current Prices, 2000–2020 .....	50
12. Current National Expenditure on Health, International Comparison, 2010, 2020, 2021 .....	51

# **INTRODUCTION**

## Table of Contents

1.	General .....	9
2.	Main Findings.....	10
2.1	Financing of the National Expenditure on Health.....	10
2.2	National Expenditure on Health, by Operating Sector .....	11
2.3	National Expenditure on Health, by Type of Service.....	11
3.	Terms, Definitions and Explanations.....	13
3.1	Health Services and Their Classification.....	13
3.2	The Value of Health Services .....	14
3.3	Classification of Expenditure, by Sector.....	15
3.3.1	New Classification and Previous Classification .....	15
3.3.2	Departments or Items Included in Each Sector .....	17
3.3.3	Health Expenditure, by Financing Sector .....	18
3.3.4	The Consolidated Account of the Government and Local Authorities, the Health Maintenance Organizations, and Private Non-Profit Institutions .....	19
3.4	International Comparison (in terms of PPP – Purchasing Power Parity) ...	20
4.	Sources of the Data and Methods.....	21
4.1	Sources.....	21
4.2	Estimates at Constant Prices.....	22
4.3	International Comparison (Table 12) .....	23
5.	Reliability of the Estimates .....	24
6.	Revisions of Definitions and Classifications .....	25
7.	Comparison With Previous Publications .....	26

## 1. General

This publication presents detailed summaries of national expenditure on health<sup>1</sup> in 2019 and 2020, and preliminary estimates for 2021. The detailed summaries include a breakdown of national expenditure on health by types of services and by operating and financing sectors. They also include a comparison between Israel and member countries of the OECD (Organization for Economic Co-operation and Development).

Table 1 presents continuous series data on the main components of the national expenditure on health since 1962/63.

Table 2 presents estimates of the national expenditure on health from 1972/73 until 2021, by type of expenditure and type of service, at constant prices.

Table 3 presents a breakdown of the national expenditure on health by type of expenditure and type of service (from 1962/63 until 2021), and Table 4 presents a breakdown by operating sector, type of expenditure, and type of service (for 2019 and 2020).

Table 5 details the components of government financing (including local authorities) and the components of financing by households for the period from 1995 until 2021.

Table 6 presents the national expenditure on health for 2019–2020, by a consolidated classification of the sectors that supply the services and the sectors that finance them.

Table 7 presents a consolidated account of receipts and disbursements of government health services (including local authorities) and health maintenance organizations (HMOs) (for 2016–2020).

Table 8 details the flow of receipts and disbursements between the government (including local authorities), the health maintenance organizations, and private non-profit health institutions (for 2019 and 2020).

Table 9 presents data on the national expenditure on health by operating sector for 1995–2021, at constant prices.

Table 10 details the expenditures of the government (including local authorities), health maintenance organizations, and other non-profit institutions for 2019 and 2020.

Table 11 presents data on supply and purchase of medications at current and at constant prices for 2000–2020.

Table 12 presents an international comparison of the national expenditure on health in Israel and in OECD countries for 2010, 2020, and 2021.

---

<sup>1</sup> Previous estimates of the national expenditure on health for the years 1962/63 until 2020 were published in: Central Bureau of Statistics (2020). *National Expenditure on Health 1962–2020*. Publication No. 1846; and in Central Bureau of Statistics (2021); *Statistical Abstract of Israel 2021*. No. 72.

## 2. Main Findings

National expenditure on health at constant prices increased by 8.6% in 2021, compared to 2020. Per capita expenditure at constant prices increased by 6.8%. The national expenditure on health at current prices in 2021 was NIS 127.3 billion, which is 8.2% of the GDP (see Diagram 1).

The health expenditure includes the expenditure on all health services provided in clinics and hospitals, as well as the services of private physicians and dentists, medicines, medical supplies and medical equipment, health research and government administration in the field of health, and capital formation in buildings and equipment in health institutions.

An international comparison with OECD countries for 2021 reveals that the current national expenditure (excluding fixed capital formation) on health as a percentage of the Gross Domestic Product in Israel (7.8%) was lower than the average in OECD countries (9.5%);<sup>2</sup> and especially lower than that of Germany (12.8%) and the United States (17.8%). Among the OECD countries providing health data for 2021, the lowest share was in Poland and Ireland (6.6% and 6.7%, respectively).

Moreover, the international comparison shows that in 2021, the current national expenditure on health per capita in terms of Purchasing Power Parity (PPP) – 3,441 US dollars in Israel was similar to the current expenditure in Lithuania, but it was lower than in most OECD countries for which data was provided. The highest current expenditure on health per capita was in the United States – 12,318 US dollars.

The calculation in terms of PPP takes into account the differences between countries in the prices of the GDP. The international comparison does not take into account differences in other factors that may affect expenditure, such as age composition, health system structure, employment structure, etc. When health expenditure is weighted by age, national expenditure per capita becomes higher.

### 2.1 Financing of the National Expenditure on Health

In 2021, households' out-of-pocket payments for medicines, medical supplies, and medical services (e.g., physicians, clinics, and dentists) financed 20% of the national expenditure on health. An additional 12% was financed by private insurance of households, by private NPIs and general hospitals belonging to them, and by donations from private organizations. Total private financing of households and others was 32% in 2021.

Health tax financed 22% of the national expenditure on health in 2021. Another 45% was financed by the government budget, and 1% was financed by donations from abroad. Financing from the government budget includes transfers to the health

---

<sup>2</sup> Based on data published on the official OECD website.

maintenance organizations and other non-profit institutions, supply of health services by government health institutions, and financing of capital formation in building, as well as acquisition of equipment in government hospitals. As of 1995, the presentation of funding for expenditure on health includes a calculation of expenditure for consumption of fixed capital (see Diagram 7).

## **2.2 National Expenditure on Health, by Operating Sector**

In 2021, health maintenance organizations provided 32.2% of health services. Market producers accounted for 53.4% of the national expenditure on health in 2021.

"Market producers" include general hospitals, dentists and other private physicians, private clinics, and manufacturers of medicines, medical supplies and medical equipment. General hospitals that are organized as corporations have been classified as market producers since 2003, in line with international recommendations, because they supply most of the services at full prices.

The share of services provided by government institutions (e.g. hospitals for psychiatric care and for the chronically ill, clinics, and health administration) was 10% of the national expenditure on health, an increase from 6% during the years 2003-2019 and from 9% in 2020. The share of services provided by other non-profit health institutions (such as Magen David Adom) was 4% of the expenditure.

## **2.3 National Expenditure on Health, by Type of Service**

Analysis of the distribution of the current expenditure on health (excluding capital formation in buildings and equipment) by type of service, shows that in 2020 expenditure on hospital services and research accounted for 34% of the current expenditure on health. Expenditures on services provided by public clinics and on preventive medicine accounted for 44%, and expenditure on private physicians and dental care, 12%. The expenditures of households on medicines and medical equipment remained the same – 4% (see Diagram 4).

**Table A1. National Expenditure on Health, 2014–2021**  
**Quantitative change: each year compared with the previous one**

Percentages

	2014	2015	2015	2016	2018	2019	2020	2021*
Current expenditure and capital formation – total	4.4	3.5	4.6	4.7	4.4	3.1	6.3	8.6
Thereof: Current expenditure	4.3	3.6	5.0	4.4	4.9	2.9	6.0	8.6
National expenditure on health per capita	2.4	1.4	2.6	2.7	2.4	1.2	4.5	6.8

\* Provisional data.

**Table A2. National Expenditure on Health, 2014–2021**  
**At current prices**

Percentages

	2014	2015	2015	2016	2018	2019	2020	2021*
National expenditure on health, as percentage of the GDP	7.4	7.4	7.5	7.6	7.6	7.6	8.4	8.2
Current expenditure on health, as percentage of private and public civilian consumption	10.0	10.0	10.1	10.2	10.2	10.3	11.6	11.5
Capital formation in buildings and equipment for health, as percentage of total fixed capital formation	1.1	1.1	1.0	1.2	1.0	1.0	2.6	1.5

\* Provisional data.

**Table A3. National Expenditure on Health, 2014–2021**  
**Financing of national expenditure on health**

Percentages

	2014	2015	2015	2016	2018	2019	2020	2021*
<b>Private financing</b>	<b>36</b>	<b>36</b>	<b>36</b>	<b>35</b>	<b>35</b>	<b>34</b>	<b>30</b>	<b>32</b>
Thereof: Households' out-of-pocket payments	23	23	22	22	21	21	18	20
<b>Government – total</b>	<b>62</b>	<b>62</b>	<b>62</b>	<b>63</b>	<b>63</b>	<b>64</b>	<b>69</b>	<b>67</b>
Health tax	24	24	24	24	24	24	21	22
Government budget finance	38	38	38	39	40	40	48	45
<b>Donations from abroad</b>	<b>2</b>	<b>2</b>	<b>2</b>	<b>2</b>	<b>2</b>	<b>2</b>	<b>1</b>	<b>1</b>

\* Provisional data.

### 3. Terms, Definitions and Explanations

In the national expenditure on health, a distinction is made between current expenditure and fixed capital formation. Current Expenditure includes expenditure on health services, medicines, medical supplies and medical equipment. Fixed Capital Formation includes construction of buildings and acquisition of equipment for institutions that provide health services.

#### 3.1 Health Services and Their Classification

Services defined as health services (generally, according to the Standard Industrial Classification of All Economic Activities 2011)<sup>3</sup> include: government administration, public clinics and preventive medicine, hospitals and research, dental care, and private physicians. According to the Standard Industrial Classification of All Economic Activities, expenditure on sanitation is not included in expenditure on health.

Direct expenditure of households on medicines, medical supplies and medical equipment purchased from commercial enterprises is shown as one item, and is not classified according to the industries that manufactured the goods.

Health services provided by clinics and hospitals at military bases are not included.

The item "Public clinics and preventive medicine" includes services provided by mother and child care clinics, health services in educational institutions, campaigns against epidemics and illnesses, preventive psychiatric care, inspection of sanitation and medical materials by the Ministry of Health. It also includes outpatient clinics of hospitals. Expenditures of dental clinics are usually separated, and are listed under the item "Dental care".

The item "hospitals and research" includes:

1. Various types of hospitals – general hospitals; hospitals for psychiatric care and for the chronically ill; convalescent homes; medical wings in homes for the aged; nursing schools, which are generally integrated within the hospitals in which they operate; research which cannot be presented separately in the financial reports. The item does not include: services for the frail elderly in geriatric centers and homes for the aged, which are defined as welfare services; medical schools in universities (including medical research).
2. Research – this item includes special units in non-profit institutions that engage in research.

Units operating on a commercial basis in hospitals (such as Private Medical Services) were separated in the set of data presented here and included in the

---

<sup>3</sup> Central Bureau of Statistics and The Public Advisory Council for Statistics (2012). *Standard Industrial Classification of All Economic Activities 2011*. Technical Publication No. 80.

item "private physicians". Units operating on a commercial basis in private non-profit institutions were included in the item "Public clinics and preventive medicine".

The item "dental care" includes dental laboratories and laboratories of dental technicians.

The item "private physicians" includes private medical institutes and laboratories, nursing services, and special treatment.

### **3.2 The Value of Health Services**

There are two kinds of services:

1. Health services provided by the government and non-profit institutions.
2. Health services purchased by households directly from commercial enterprises.

In most cases, the government and non-profit institutions provide health services at reduced prices or free of charge. Because these services have no market price, their value is estimated according to production expenditures:

1. Labour cost – wages and salaries paid directly to employees, employers' contributions to funds and savings plans on behalf of employees (e.g., pension funds and national insurance, including parallel tax until 1996) and taxes on labour, such as payroll tax and employers' tax. (Employers' tax was introduced in 1975, abolished for the business sector in 1992, and completely abolished in 2008.)
2. Expenditure on medicines, medical supplies, medical equipment and other current expenditures on purchases of goods and services.
3. A calculated estimate of expenditure on consumption of fixed capital of buildings and equipment.
4. Imputed government expenditure, representing the government's commitment to pay budgetary pensions to its employees when they retire.

The last two components were not included in the estimates of the value of health services before 1984/85. In order to enable comparison with estimates for previous years, Tables 1 and 3 present estimates for 1984/85, which were also prepared according to the previous method.

The cost of production does not include disbursement of interest. Thus, the value of services provided to the public remains unchanged, whether the government financed its expenditure by levying taxes or receipt of grants, or whether the expenditure was financed through loans bearing interest.

### **3.3 Classification of Expenditure, by Sector**

#### **3.3.1 New Classification and Previous Classification**

In the past, the national expenditure on health was presented by the following sectors, according to ownership and legal status:

1. The government and local authorities – including the National Insurance Institute and national institutions, health maintenance organizations.
2. Other non-profit institutions.
3. Business (for-profit producers) – business establishments and households.

According to SNA 2008, since 2003 the economy has been divided into the following sectors:

1. The government and local authorities.
2. Private non-profit institutions.
3. Public non-profit institutions (HMOs).
4. Market producers – this should include every institutional unit that sells the majority of its output at a price that is economically significant in the corporation sectors, even if the unit is organized legally and formally as a non-profit institution and is not related to the entity that controls the unit. Therefore, in the present publication for-profit producers (private hospitals, private doctors and nurses, etc.) as well as general hospitals owned by the government, health maintenance organizations, and private non-profit institutions are included in this sector.

**Table B. National Expenditure on Health, by Previous Classification and by New Classification, 2020**

Manner of providing goods and services (sales in the market, for free or at a reduced cost)	Ownership of: Government and local authorities and government owned hospitals	Ownership of: HMOs and hospitals owned by them	Ownership of: Private NPIs and hospitals owned by them	Ownership of: For-profit producers	<b>New classification</b>
Government and local authorities – for free or at a reduced price	10,935				10,935
HMOs – for free or at a reduced price		38,136			38,136
Private NPIs – for free or at a reduced price			4,936		4,936
Market producers	15,664	10,082	6,691	31,875	64,312
<b>Previous classification</b>	<b>26,599</b>	<b>48,218</b>	<b>11,627</b>	<b>31,875</b>	<b>118,319</b>

Tables 1 and 9 are presented twice (1, 1a; and 9, 9a). Tables 1a and 9a present the four sectors according to the old classification, and Tables 1 and 9 present the sectors according to the new classification. In contrast to the previous classification, the first three sectors in the new classification do not include general hospitals owned by those sectors, and the market producers sector includes for-profit producers as well as general hospitals owned by the government, the health maintenance organizations, and other non-profit institutions.

Health services were classified by operating sector and by financing sector (a consolidated classification appears in Table 6).

In the classification by operating sector, the direct expenditure of each sector on labour and on other goods and services was recorded, irrespective of the financing sector. For example: all expenditures on labour and on other goods and services in institutions such as health maintenance organizations were recorded as expenditures of that sector and not as expenditures of other sectors that financed them, such as the government or households.

In the classification by financing sector, the financing by each sector is defined as the total direct expenditure on goods and services plus subsidies, grants, transfers and other disbursements (net) to other sectors (not including provision of loans).

As of 1995, calculation of the share of each sector in financing health expenditures includes estimated consumption of fixed capital in the sector's expenditures as well as in the total national expenditure on health (Table 5).

Government financing does not include the subsidy component of government loans granted to other providers of health services (mainly HMOs) at a reduced interest rate or unlinked to the Consumer Price Index.

### **3.3.2 Departments or Items Included in Each Sector**

Expenditure on health by government and local authorities includes the expenditure on health (in the ordinary and development budgets) by the Ministry of Health, the Ministry of Social Affairs and Social Services, the Unit for Treatment of Nazi Victims, the national institutions, the National Insurance Institute, and the health departments of local authorities, as well as the expenditure on medical supervision and dental care in primary schools from the budget of the Education Department. Expenditures on administration in local authorities are included in the category public clinics and preventive medicine, because they could not be separated from the other expenditure items in the reports of most local authorities.

Expenditure on health by health maintenance organizations includes the expenditure recorded in their ordinary and development budgets.

Expenditure on health by private non-profit institutions includes the expenditure of health institutions that are not owned by the government, national institutions, or local authorities and institutions, that sell most of their output at a price that is not economically significant. Private non-profit institutions include non-governmental public hospitals, health organizations, etc.

Expenditure on health by market producers includes: household expenditures for purchasing medicines, medical supplies, and medical equipment from commercial bodies, as well as revenue from health services provided by commercial entities such as: private hospitals; commercial units in non-profit institutions (e.g., Supplementary Medical Services and Private Medical Services); private doctors and dentists; general hospitals owned by the government; health maintenance organizations or private non-profit institutions that sell most of their output at an economically significant price.

This sector includes commercial medical activity of institutes affiliated with research foundations or hospital friends' associations (organized as non-profit institutions), such as institutes for periodic examinations, institutes for special medical examinations, and commercial medical activity (e.g., plastic surgery).

### 3.3.3 Health Expenditure, by Financing Sector

Table 5 specifies the contributions of the government (including local authorities), private non-profit institutions, households, and donations from abroad, in financing the health expenditure. The expenditure of each sector and the total expenditure in this table include the calculated consumption of fixed capital since 1995. As mentioned in Section 3.3, the value of the health services provided by the government and non-profit institutions is estimated according to current costs, excluding interest payments. The financing estimates do not include provision and repayment of loans, or interest.

Government financing includes the following components:

1. Health tax, which the National Insurance Institute transfers to HMOs.
2. Other subsidies provided out of the government budget to HMOs, to other non-profit institutions, and to households.
3. Provision of current goods and services by government health institutions and by local authorities, purchase of health services in other sectors, construction and purchase of equipment by the government – less earmarked receipts.
4. Parallel tax, transferred to HMOs by the National Insurance Institute up to and including 1996.

Financing by households includes:

1. Disbursements for health services, medicines, medical supplies and medical equipment purchased from market producers, the government, the health maintenance organizations, and other non-profit institutions, as well as donations.
2. Until 1994, HMOs membership fees were included. In 1995 the health tax replaced membership fees.

### **3.3.4 The Consolidated Account of the Government and Local Authorities, the Health Maintenance Organizations, and Private Non-Profit Institutions**

Tables 7 and 8 present estimates for financing of health services. These estimates do not include provision and repayment of loans, interest (receipts and disbursements), or income from property.

Table 7 presents a consolidated account of the government (including local authorities) and health maintenance organizations, describing their activity with other sectors during the period 2015–2020. Many transactions between the government and the health maintenance organizations were only intended to transfer income from the collecting sector to the operating sector. These transfers are made due to the special way in which health services are organized and financed in Israel. Because these transfers are not significant for certain operations, the table presents the consolidated account of the government and local authorities and the health maintenance organizations. This account presents only receipts and disbursements to other sectors, without the internal transfers.

Table 8 presents data on the economic activity of each of the sectors in 2019 and 2020, including transactions between them, as well as the sale and purchase of goods and services. The table also includes data on the sector of private non-profit institutions. The flow of receipts and disbursements between the government, the health maintenance organizations, and the private non-profit institutions was recorded according to the financial reports of each sector, without adjustment. It is sometimes found that a particular cash flow is recorded in the report of one of the sectors (the paying sector) differently than the corresponding flow recorded in the report of the other sector (the receiving sector). This difference sometimes results from a gap in the date of recording, or from another recording method (recording on a cash basis or a cumulative basis).

Income includes income from the sale of health services, such as hospitalization and treatment at clinics, for every sector. These services are sold to other sectors at full price or at a price covering only part of the cost. Other income consists of subsidies and participation in financing for maintenance of services (current transfers) and for construction (capital transfers). Donations received from Israeli residents and from abroad for maintenance and construction purposes are also included.

Expenditure (detailed in Tables 2–4 and 10) includes:

1. Expenditure on provision of health goods and services to the public, such as operation of hospitals and clinics and administrative expenditures.
2. Capital formation in the construction of health institutions and in equipment.
3. Expenditure on the purchase of services from the other sectors, such as hospitalization and treatment in clinics owned by others. This includes: government expenditure on hospitalization of mental health and chronically ill patients in hospitals owned by others; maternity hospitalization paid for by the National Insurance Institute (in 1995–1997, disbursements were transferred directly to the HMOs); government disbursements for health maintenance organization insurance coverage of welfare recipients and immigrants; hospitalization of health maintenance organization fund members in government hospitals or in hospitals owned by private non-profit institutions or the business sector.
4. Subsidies and participation in current maintenance of health services, which are defined as current transfers; subsidies and participation in construction of buildings and purchases of equipment, which are defined as capital transfers.

Current government transfers also include the transfer of the health tax by the National Insurance Institute to the health maintenance organizations. Up to and including 1996, these transfers also included parallel tax revenues forwarded by the National Insurance Institute to the health maintenance organizations.

The deficit of the government and local authorities, the health maintenance organizations, and other non-profit institutions is financed from the general government budget, from loans received by the health maintenance organizations and private non-profit institutions, or from the sale of assets by these institutions.

### **3.4 International Comparison (in terms of PPP – Purchasing Power Parity)**

Table 12 presents values in dollars, as equivalents to the value of Purchasing Power Parity (PPP). The PPP value expresses the proportional expenditure on a given list of products and services in various countries. The characteristic feature of this list is that in addition to internationally tradable goods, it includes non-tradable items such as road construction or education and health services in which the price differences between countries are relatively large. Accordingly, the PPP value differs from the cross-currency exchange rate, which is affected only by international trade in goods and services and by capital flows.

## 4. Sources of the Data and Methods

### 4.1 Sources

Estimates at current prices were based on a detailed analysis of expenditure items in the financial report of the government, which is compiled by the Accountant General, and on financial reports received from the national institutions, the National Insurance Institute, as well as the local authorities. Additional sources were the annual reports of the State Comptroller and the explanatory notes to the Ministry of Health's budget proposal, which were prepared by the Budget Department of the Ministry of Finance.

Data on the expenditure of health maintenance organizations and other non-profit health institutions were obtained from an annual survey of the components of expenditure in these institutions, which is being conducted by the Central Bureau of Statistics. This survey is based on an analysis of financial reports, and on responses to special questionnaires received from health maintenance organizations and private non-profit institutions, as well as on a Ministry of Health report on the activities of health maintenance organizations.

Estimates for commercial health services (private physicians, nurses and dentists; medicines, medical supplies and medical equipment) are based on data obtained from the Household Expenditure Survey,<sup>4</sup> which was conducted about once every five years until 1997, and has been conducted on an annual basis since then. In this survey, households specify all of their consumption expenditures. The estimates were based on details of consumption in the following items: dental care; private physicians; various treatments such as acupuncture, homeopathy and reflexology; other health services; convalescent homes; medicines; cotton wool and bandages; other medical materials; optical rehabilitation; and other equipment. For years when no survey was conducted, estimates were derived by interpolation or extrapolation of raw estimates, based on changes in similar private consumption items for which data were available.

Data on supplementary medical insurance were obtained from the Ministry of Health public summary report on additional health programs of the health maintenance organizations. The data on private insurance and dental insurance, which were received from the division of capital markets at Ministry of Finance, are based on the financial reports of the insurance companies.

Estimates of the value of private hospital services were derived from revenue reports submitted to the income tax authorities by those services, as well as from reports on the number of hospitalization days submitted to the Ministry of Health.

---

<sup>4</sup> Central Bureau of Statistics (2021). *Household Income and Expenditure, Data from the 2019 Survey and 2018 Tables Using a New Estimation Method*. Publication No. 1869.

Other sources used to compile the estimates were processing of contractors' reports to the local authorities, as well as direct reports by the Ministry of Construction and Housing and the major construction companies regarding the areas of construction begun and completed.

Estimates of the number of hospitalization days were based on annual publications of Inpatient Institutions and Outpatient Units in Israel.<sup>5</sup>

#### **4.2 Estimates at Constant Prices**

The annual changes in national expenditure on health and its main components, at constant prices (Tables 2 and 9), were calculated separately for each sector (government and local authorities, health maintenance organizations, private non-profit institutions, and market producers), for each type of expenditure (wages, current purchases, consumption of fixed capital, construction and equipment) and for each type of service (clinics, hospitals, etc.).

1. The change at constant prices in the labour costs of the government, health maintenance organizations and private non-profit institutions, was estimated according to changes in the number of employed persons and in work hours per employed person.
2. Current expenditure on the purchase of other goods and services at constant prices was estimated by deducting the estimates at current prices, by a price index that takes into account the special composition of the expenditure of these institutions.
3. In the market producers sector, estimates at constant prices were calculated by using quantitative indicators such as number of hospitalization days.
4. Capital formation in buildings, at constant prices, was estimated using the Input Prices Index of Residential Construction. The estimate of capital formation in equipment was computed using price changes in the output of industries that manufacture equipment, and price changes in imported equipment.

---

<sup>5</sup> Ministry of Health (2021). *Inpatient Institutions and Outpatient Units in Israel 2020*.

Estimates of the national expenditure on health, at constant prices, are weighted by base year prices, as follows:

Base Years	Years in which Estimates were Weighted
2015	1990–2021
1986/87	1986/87–1990/91
1980/81	1980/81–1986/87
1975/76	1975/76–1980/81
1970/71	1970/71–1975/76

**4.3 International Comparison (Table 12)**

The data on health expenditure in OECD countries were obtained from OECD publications.

Because there is no reliable PPP index for the list of items included in health expenditure, the OECD study included an international comparison of health expenditures, taking into consideration the PPP value in terms of the GDP.<sup>6</sup>

<sup>6</sup> Source: the OECD website: [www.oecd.org](http://www.oecd.org).

## 5. Reliability of the Estimates

1. The preliminary estimates for 2021 are less reliable than those for the period up to 2020, which are based on analysis of detailed financial reports. The preliminary estimates are based on several sources: data on expenditures of the Ministry of Health in the Accountant General's report; data reported to the National Insurance Institute on wages and the number of workers in health maintenance organizations and private non-profit institutions; financial reports or updated budgets; and general estimates of expenditures of local authorities and revenue from health services in the business sector.
2. The estimates of most commercial health services, which are based on data from the Household Expenditure Surveys – especially the estimates for years in which these surveys were not conducted – have a low level of reliability.

The estimates of national expenditure on health do not fully cover some of the expenditures on services provided by commercial clinics or private services provided by physicians and nurses, which were purchased by enterprises and institutions that are not affiliated with the industry (e.g., industrial establishments) instead of being purchased by households.

3. In analyzing the findings, it should be taken into account that the records of receipts and disbursements flow in the various sectors do not fully coincide with each other. For example, the government and health maintenance organizations often transfer funds to each other over a period of several years, and the transfers between them may be listed according to different years, at different values, and sometimes using different methods (i.e., on a cash basis versus a cumulative basis). A transfer is sometimes recorded for the year in which it was carried out, but with a nominal value of the year to which it relates. Consequently, changes in the financing or supply of health services during the course of a single year should be considered with caution, and analyses should be based on the average amount obtained for several years. Moreover, it should be noted that data obtained for recent years may change as a result of transfers relating to items that have been subject to ongoing negotiations between the sectors.

## 6. Revisions of Definitions and Classifications

The following are the revisions of definitions and classifications introduced over the years:

1. As of 1995, the national expenditure on health by financing sector includes consumption of fixed capital. Financing from the government budget, which was calculated in the past on the basis of the financing source, is now calculated on the basis of budget operation. Private financing, which was estimated according to Household Expenditure Survey data, is now calculated as the difference between total financing and government and foreign financing. Private financing includes payments by households for products and services; self-financing of private non-profit institutions; and self-financing of general hospitals belonging to them.
2. As of 1995, the calculation of consumption of fixed capital has been updated. In addition, the estimate of expenditure in the sector of market producers has been changed. The new estimate is based on a wider sample.
3. In keeping with international recommendations, since 2003 general hospitals have not been included in the non-profit institutions sector because these hospitals supply most of their services at full prices.
4. Since 2000, the data source for sales of medicines, medical supplies and medical equipment to households by health maintenance organizations has been the Ministry of Health report on the activities of health maintenance organizations. Previously, the data source was the Household Expenditure Survey.
5. As of 1984/85, in contrast to the estimates for previous years, estimates include an imputed expenditure for budgetary pensions (which reflects the government's obligation to pay pensions to its workers after they retire). They also include a calculated expenditure on consumption of fixed capital of buildings and equipment of public health institutions. These additions increased the national expenditure on health in 1984/85 by approximately 10%.

Another difference is the distinction made between two groups of non-profit institutions: institutions whose expenditures are financed mainly by the government; and other institutions. The first group includes the health maintenance organizations, and the second group includes private non-profit institutions.

To facilitate comparison with previous series, data for 1984/85 are also presented according to the former definitions.

6. Until 1979/80, services for treatment of frail elderly patients at geriatric centers and homes for the aged were also included in the estimates of expenditures for hospital services and in the estimates of national expenditure on health. According to estimates conducted for 1979/80, the value of these services was approximately

0.5% of the current national expenditure on health, approximately 1% of the expenditure on hospitals and research, and approximately 9% of the expenditure on hospitals for the chronically ill. This revision reduced government expenditure as well as the expenditures of private non-profit institutions (not including HMOs) by approximately 1%, and expenditures of local authorities by approximately 8%.

## **7. Comparison With Previous Publications**

In this publication, minor revisions were made in the estimates for 2019 and 2020 that were published in *National Expenditure on Health 1962–2020*.<sup>7</sup> The revisions are based on updated data as well as on additional financial reports.

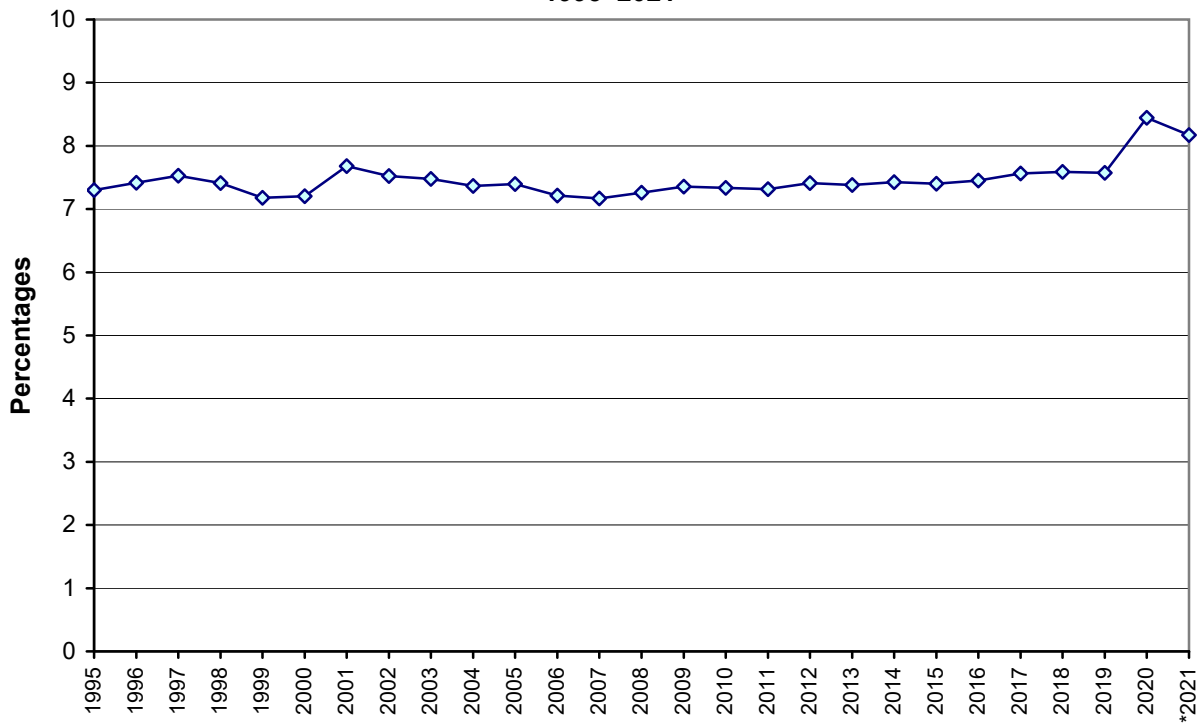
---

<sup>7</sup> Central Bureau of Statistics (2021). *National Expenditure on Health 1962–2020*. Publication No. 1864.

# DIAGRAMS

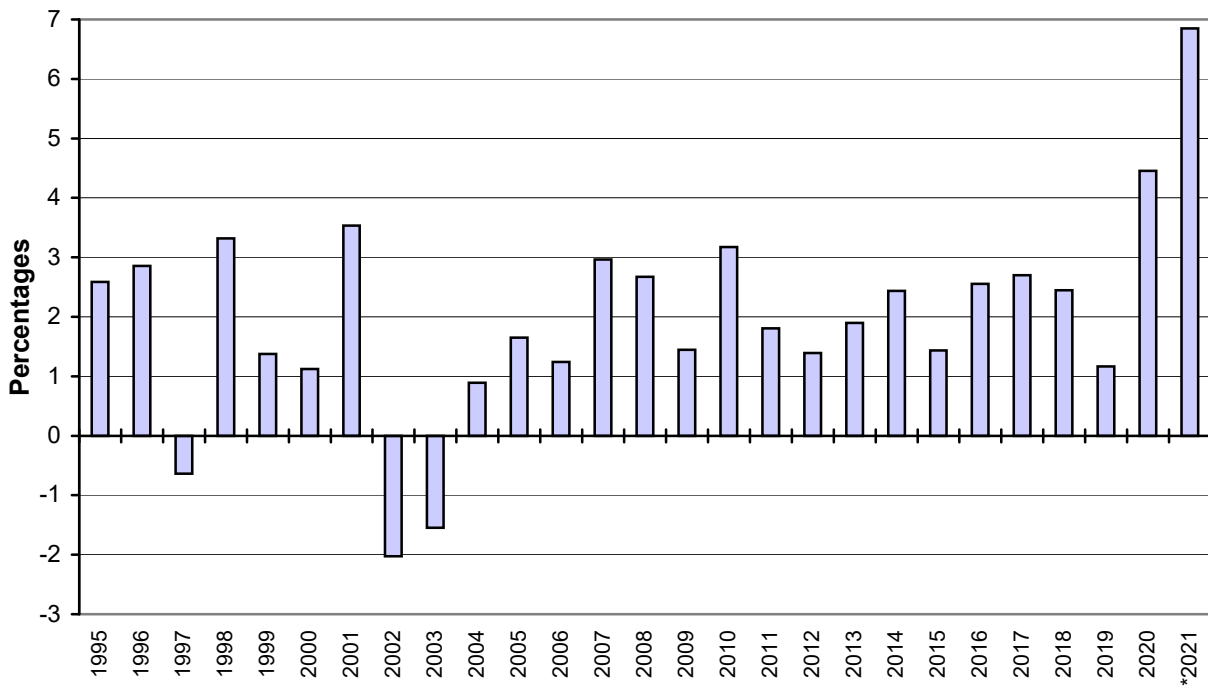


**1. NATIONAL EXPENDITURE ON HEALTH, AS PERCENTAGE OF GDP  
1995–2021**



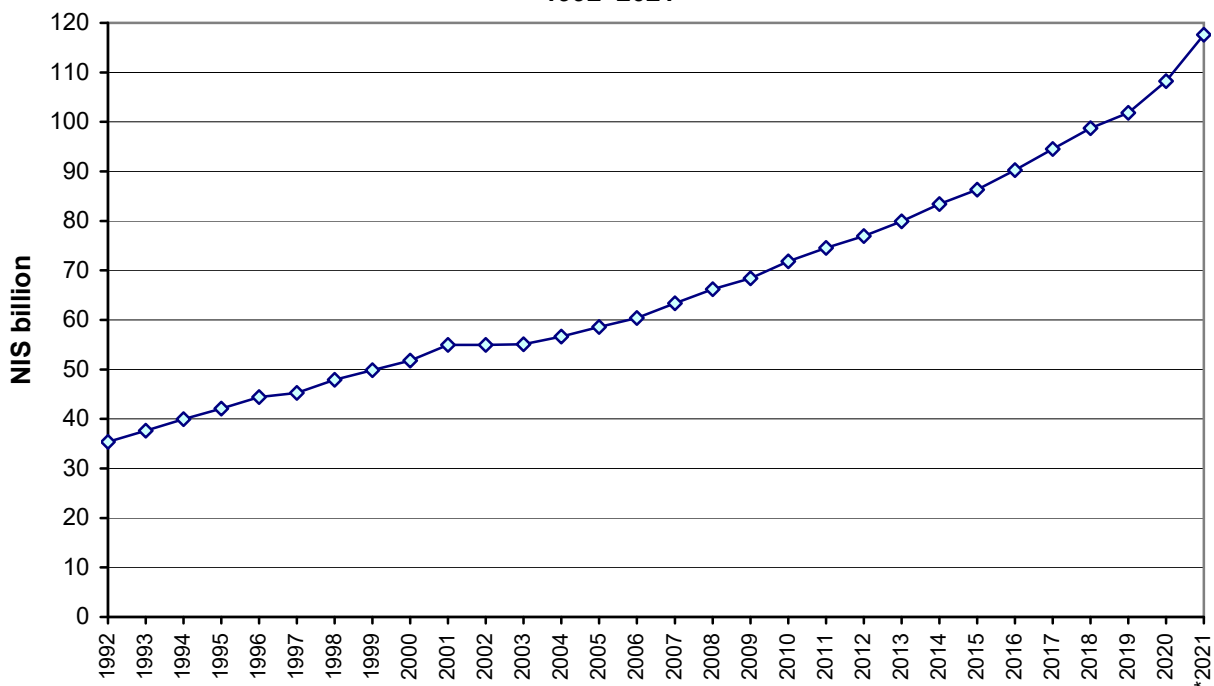
\* Provisional data.

**2. NATIONAL EXPENDITURE ON HEALTH PER CAPITA  
Quantity change in each year compared to previous one  
1995–2021**



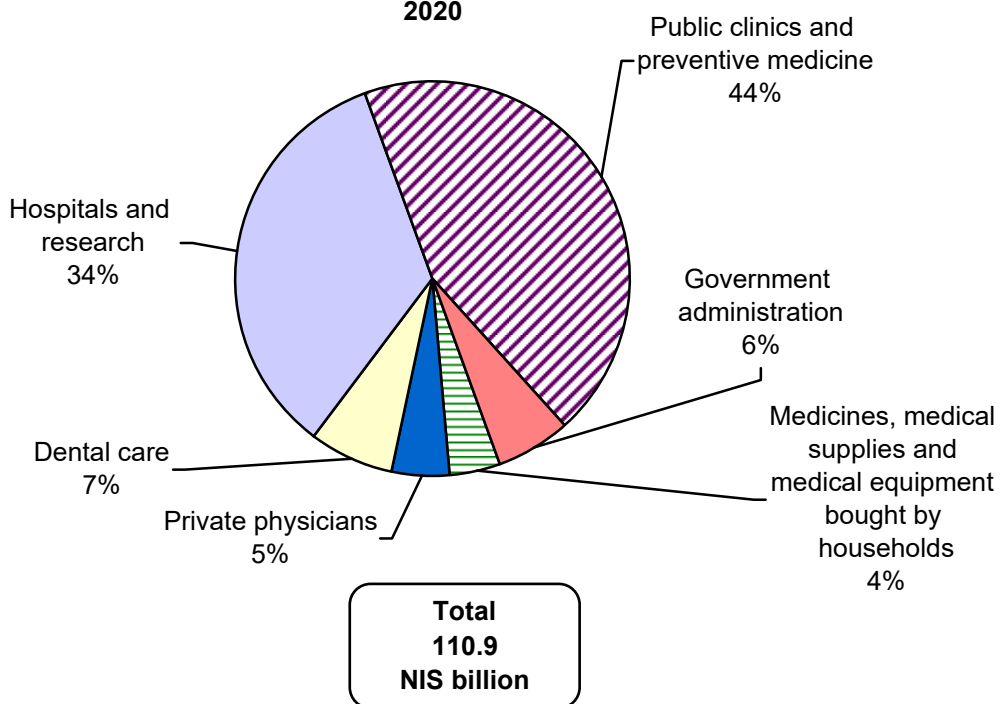
\* Provisional data.

**3. NATIONAL EXPENDITURE ON HEALTH**  
**NIS billion, at 2015 prices**  
**1992–2021**

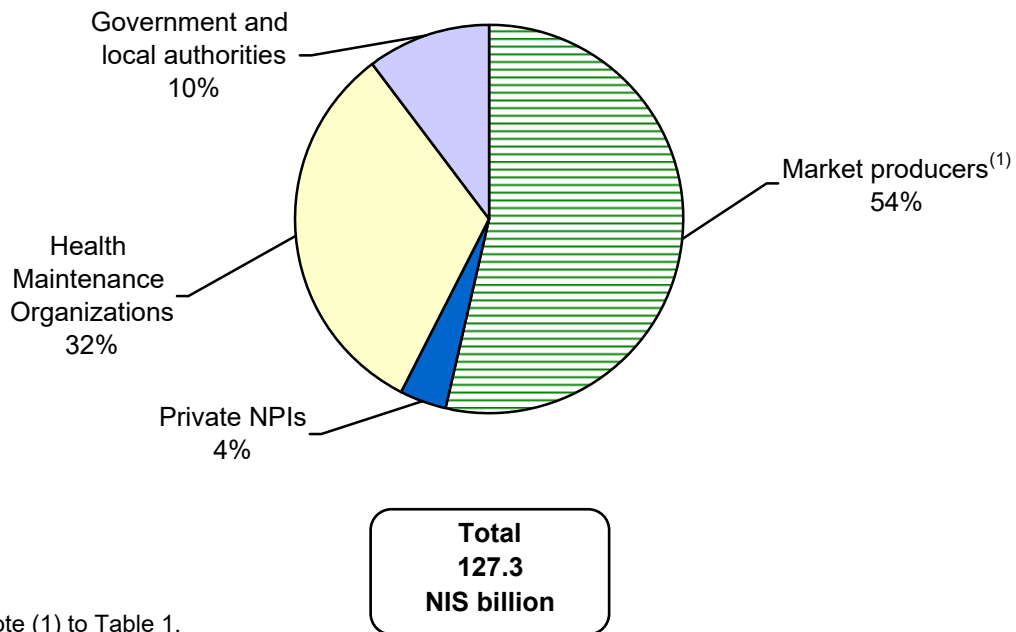


\* Provisional data.

**4. CURRENT EXPENDITURE ON HEALTH, BY TYPE OF SERVICE**  
**At current prices**  
**2020**

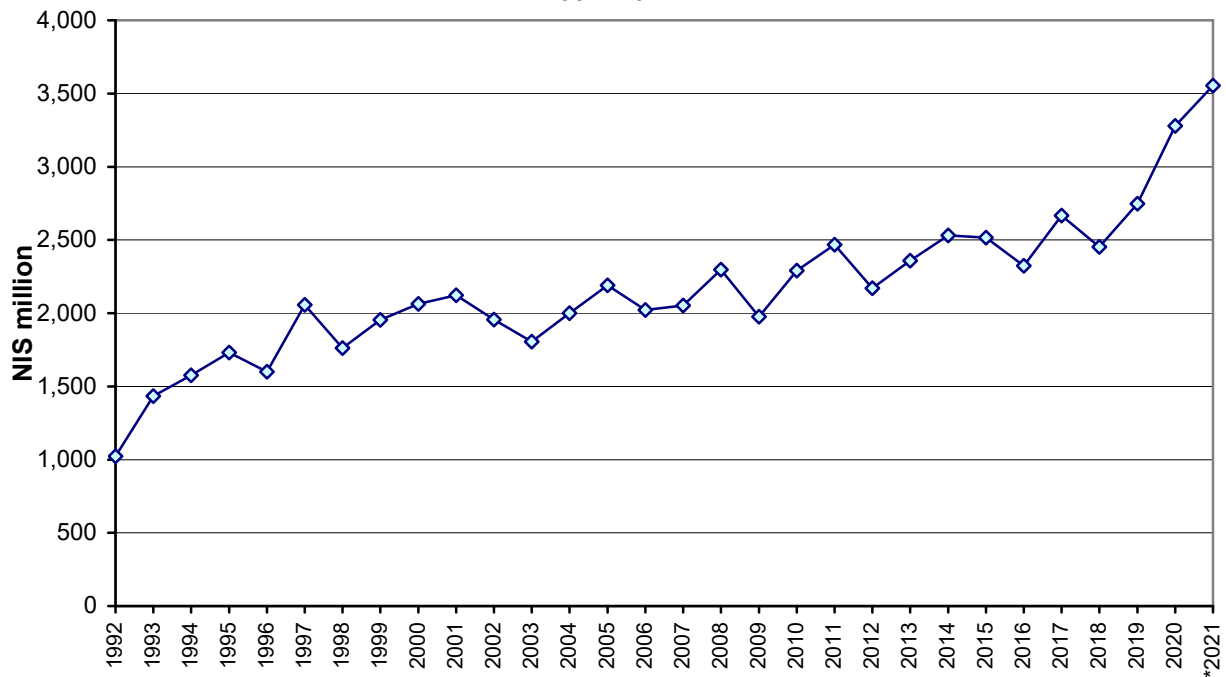


**5. NATIONAL EXPENDITURE ON HEALTH, BY OPERATING SECTOR  
2021\***



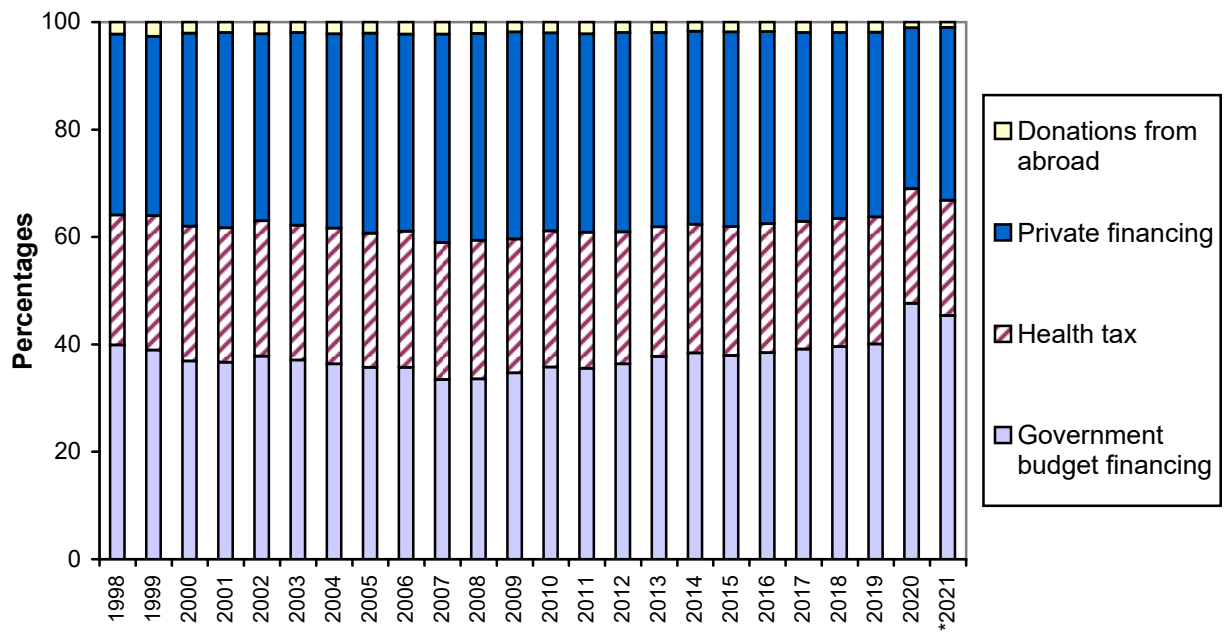
(1) See note (1) to Table 1.  
\* Provisional data.

**6. FIXED CAPITAL FORMATION IN THE HEALTH SYSTEM  
NIS million, at 2015 prices  
1992–2021**



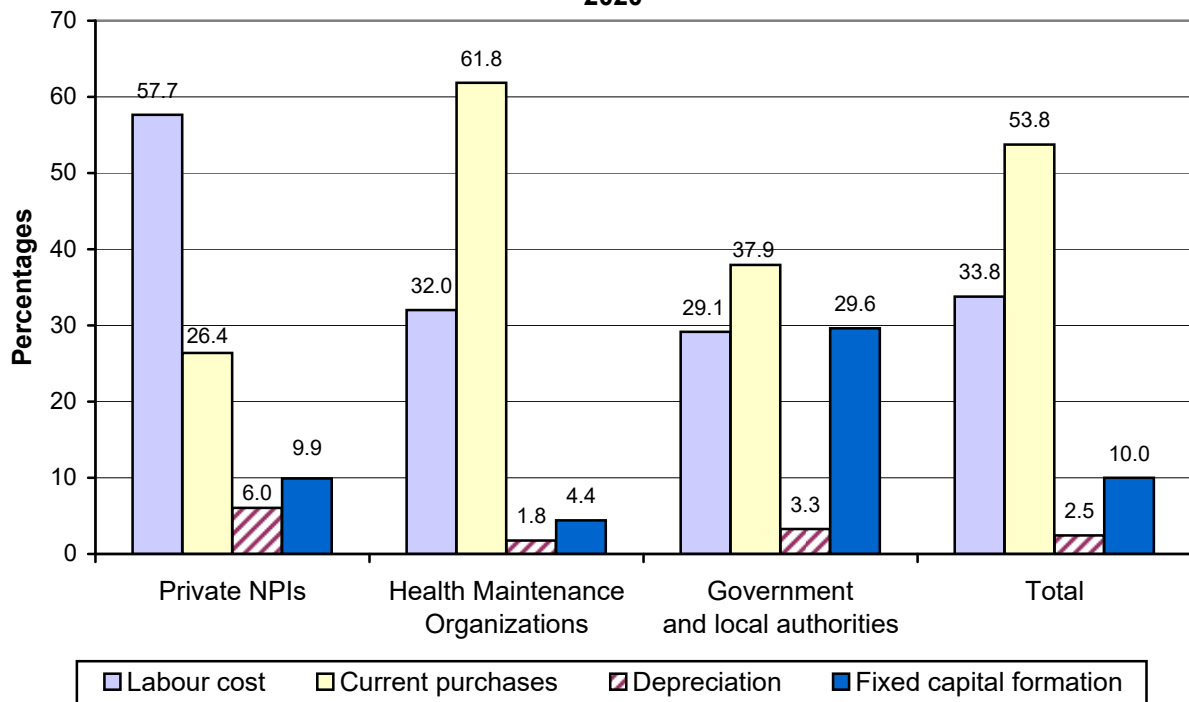
\* Provisional data.

**7. NATIONAL EXPENDITURE ON HEALTH, BY FINANCING SECTOR  
1998–2021**

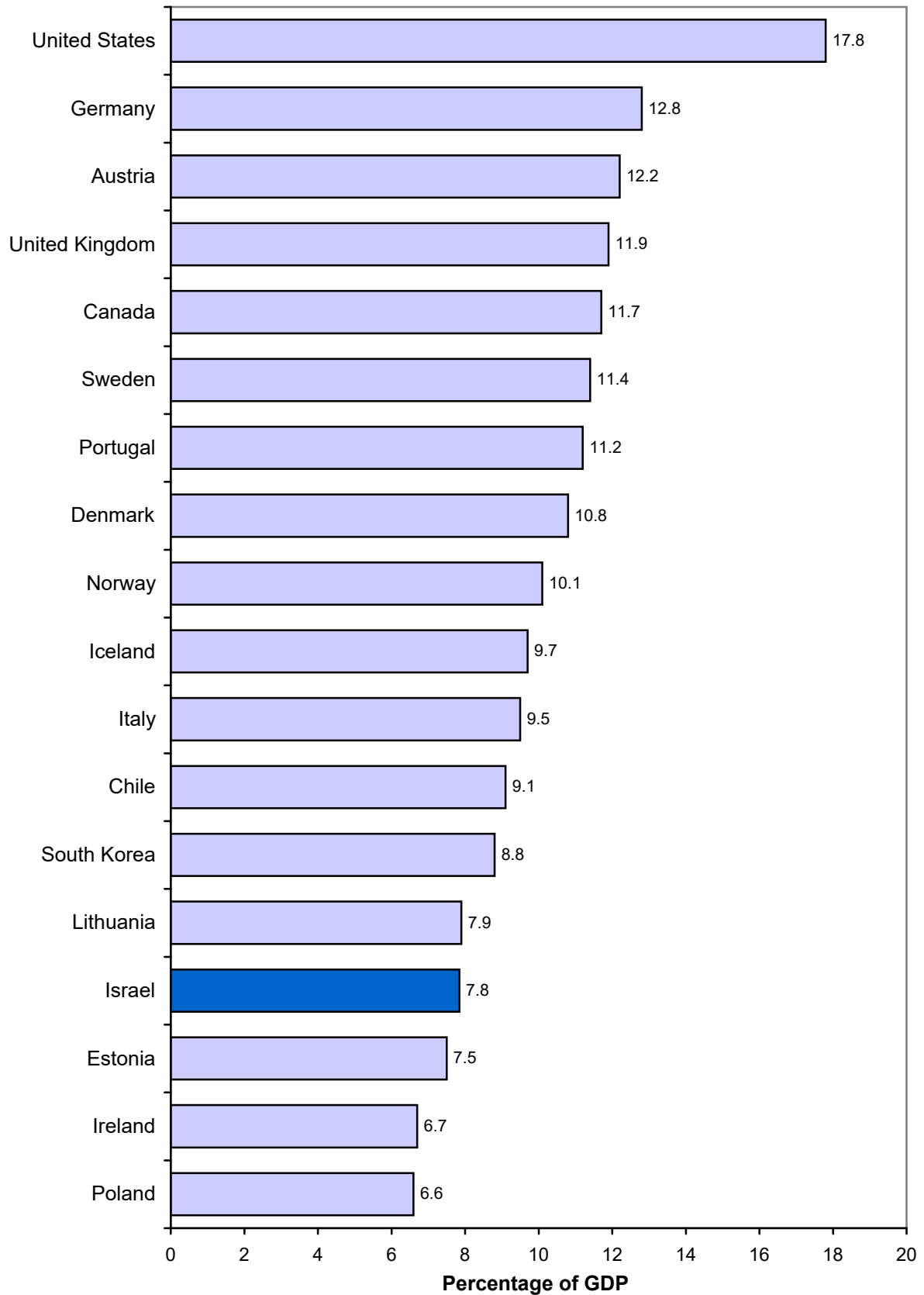


\* Provisional data.

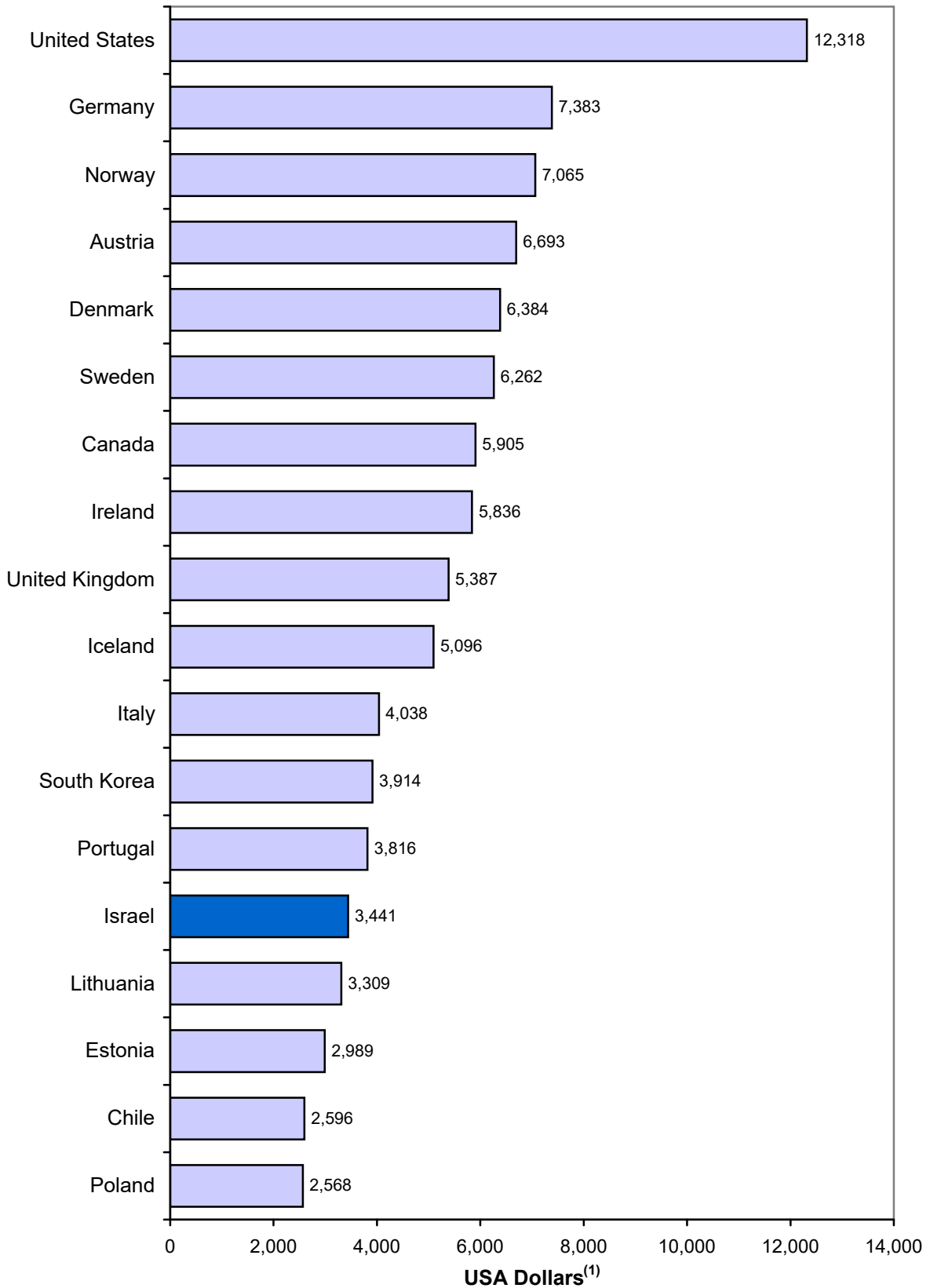
**8. EXPENDITURE OF THE GOVERNMENT AND LOCAL AUTHORITIES, HEALTH MAINTENANCE ORGANIZATIONS AND PRIVATE NPIS ON HEALTH SERVICES, BY TYPE OF EXPENDITURE  
2020**



**9. CURRENT NATIONAL EXPENDITURE ON HEALTH,  
AS PERCENTAGE OF GDP  
International Comparison  
2021**



**10. CURRENT NATIONAL EXPENDITURE ON HEALTH PER CAPITA  
International Comparison  
2021**



(1) Adjusted to terms of the Purchasing Power Parity of the GDP.

# **TABLES**

(PRESENTED IN HEBREW ORDER – FROM RIGHT TO LEFT)



# EXPLANATORY NOTES

## Area Covered by the Statistical Data

The statistical data relate to the economic territory of the State of Israel, unless otherwise stated.

**A. The economic territory of a country** (according to the definition of the OECD-SNA. For a detailed definition, see: OECD, Glossary of Statistical Terms): The economic territory of a country consists of the geographic territory administered by a government within which persons, goods and capital circulate freely.

**The economic territory of the State of Israel:** According to this definition, the economic territory of the State of Israel is as indicated in paragraph B below.

**B. District and Sub-District:**

The districts and sub-districts are defined according to the official administrative division of the State of Israel, which includes 6 districts and 15 sub-districts. Including Israeli localities in the Judea and Samaria Area.

## Special Symbols

- = No cases
- 0 = A value smaller than half the unit by which data are presented in the table
- .. = Unknown or not for publication
- \* = Provisional data

Details do not necessarily add up to totals because of rounding.

**TABLE 1. NATIONAL EXPENDITURE ON HEALTH,  
BY OPERATING SECTOR (NEW CLASSIFICATION)**
**לוח 1. הוצאה לאומית לבריאות,  
לפי מגזר מבצע (מיון חדש)**

At current prices		2003-2021							במחירים שוטפים	
	השקעה, כאחוז מההשקעה המקומית בנכסים קבועים	הוצאה שוטפת, כאחוז מהצריכה הפרטית והציבורית האזרחית	סך כל ההוצאה הלאומית לבריאות, כאחוז מהתמ"ג(2)	יצרני שוק (1)	מלכ"רים פרטיים	קופות חולים	ממשלה ורשויות מקומיות	סך הכל		
	Capital formation, as a percentage of fixed domestic capital formation	Current expenditure, as a percentage of private and public civilian consumption	Total national expenditure on health, as a percentage of GDP(2)	Market producers	Private NPIs	Health maintenance organizations	Government and local authorities	Total		
	Percentages							אחוזים	מיליוני ש"ח NIS millions	
2003	1.3	9.9	7.5	53.0	6.0	35.0	6.0	100.0	43,253	2003
2004	1.2	9.8	7.4	53.5	5.6	34.6	6.3	100.0	44,759	2004
2005	1.2	9.9	7.4	53.3	5.3	35.3	6.0	100.0	47,353	2005
2006	1.2	9.7	7.2	54.0	5.0	35.0	6.0	100.0	49,554	2006
2007	1.1	9.6	7.2	55.0	5.0	34.0	6.0	100.0	52,761	2007
2008	1.2	9.5	7.3	55.8	4.8	34.0	5.5	100.0	56,433	2008
2009	1.2	9.8	7.4	56.0	5.0	33.0	6.0	100.0	60,139	2009
2010	1.3	9.7	7.3	56.0	5.0	33.0	6.0	100.0	64,341	2010
2011	1.3	9.6	7.3	55.7	4.7	33.7	6.0	100.0	68,632	2011
2012	1.1	9.8	7.4	56.0	5.0	33.0	6.0	100.0	73,838	2012
2013	1.2	9.9	7.4	56.0	5.0	33.0	6.0	100.0	78,423	2013
2014	1.1	10.0	7.4	56.3	4.3	33.3	6.0	100.0	82,614	2014
2015	1.1	10.0	7.4	56.0	4.0	34.0	6.0	100.0	86,323	2015
2016	1.0	10.1	7.5	56.1	4.4	33.6	5.9	100.0	91,289	2016
2017	1.2	10.2	7.6	56.0	5.0	33.0	6.0	100.0	96,727	2017
2018	1.0	10.2	7.6	56.0	5.0	33.0	6.0	100.0	101,805	2018
2019	1.0	10.3	7.6	56.3	4.6	33.4	5.7	100.0	107,441	2019
2020	2.6	11.6	8.4	54.4	4.2	32.2	9.2	100.0	118,319	2020
2021*	1.5	11.5	8.2	53.4	4.2	32.2	10.2	100.0	127,292	*2021

(1) Market producers include: For-profit producers (private hospitals, private physicians and nurses, etc.), as well as general hospitals owned by the government, by HMOs and by private NPIs.

See Introduction, section 3.4: "Classification of Expenditure by Sector" (paragraph 3.4.1).

(2) Since 1980/81 GDP includes net taxes on imports.

(1) יצרני שוק כוללים: יצרנים שלהם כוונת רווח (בתי חולים פרטיים, רופאים ואחיות פרטיים וכד'), וכן בתי חולים כלליים בבעלות של הממשלה, של קופות החולים ושל מלכ"רים פרטיים. ראו מבוא, סעיף 3.4:

"סיווג ההוצאה לפי מגזר" (פסקה 3.4.1).

(2) משנת 1980/81 אוילך התמ"ג כולל מיסים נטו על היבוא.

**TABLE 1A. NATIONAL EXPENDITURE ON HEALTH, BY OPERATING SECTOR (PREVIOUS CLASSIFICATION)**

**לוח 1א. הוצאה לאומית לבריאות, לפי מגזר מבצע (מיון קודם)**

At current prices		1962/63-2021										
השקעה, כאחוז מההשקעה המקומית בנכסים קבועים	הוצאה שוטפת, כאחוז מהצריכה הפרטית והציבורית האזרחית	הוצאה הלאומית לבריאות, כאחוז מהתמ"ג(2)	יצרנים שלהם כוונת רווח(1)	מלכ"רים פרטיים ובתי חולים שבבעלותם	קופות חולים ובתי חולים שבבעלותן	ממשלה ורשויות מקומיות, ובתי חולים שבבעלות הממשלה	סך הכל					
Capital formation, as percentage of fixed domestic capital formation	Current expenditure, as percentage of private and public civilian consumption	Total national expenditure on health, as percentage of GDP(2)	For-profit producers (1)	Private NPIs and hospitals owned by them	Health maintenance organizations and hospitals owned by them	Government and local authorities, and hospitals owned by the government	Total					
							סדרה ישנה					
							אחוזים		אלפי ש"ח NIS thousand			
Old series Percentages												
1962/63	1.3	6.2	5.4	21	55	24	100	34			1962/63	
1963/64	1.5	6.0	5.1	21	55	24	100	39			1963/64	
1964/65	1.6	6.2	5.3	21	54	25	100	46			1964/65	
1965/66	1.8	6.7	5.8	19	55	26	100	60			1965/66	
1966/67	3.3	6.6	6.0	20	54	26	100	68			1966/67	
1967/68	3.5	6.7	5.9	21	52	27	100	70			1967/68	
1968/69	2.5	6.3	5.3	21	53	26	100	77			1968/69	
1969/70	2.4	6.2	5.2	20	54	26	100	87			1969/70	
1970/71	2.1	6.8	5.3	20	54	26	100	105			1970/71	
1971/72	1.8	6.9	5.1	21	53	26	100	129			1971/72	
1972/73	2.2	7.1	5.5	20	11	45	100	176			1972/73	
1973/74	2.9	7.1	5.8	21	11	40	100	237			1973/74	
1974/75	3.1	6.9	5.8	21	11	40	100	356			1974/75	
1975/76	3.6	6.9	5.9	21	11	40	100	489			1975/76	
1976/77	3.2	7.7	6.4	22	10	40	100	703			1976/77	
1977/78	3.2	8.4	6.8	23	11	38	100	1,113			1977/78	
1978/79	3.3	8.8	7.4	22	13	40	100	2,029			1978/79	
1979/80	2.4	9.1	7.4	21	12	39	100	4,014			1979/80	
1980/81	1.8	8.9	6.8	20	12	41	100	9,122			1980/81	
1981/82	1.8	8.7	6.8	22	11	41	100	20,912			1981/82	
1982/83	2.0	8.4	6.8	23	12	40	100	49,428			1982/83	
1983/84	2.0	8.4	6.8	24	12	41	100	136,544			1983/84	
1984/85	2.2	8.9	7.1	20	13	45	100	736,077			1984/85	
New series(3) Percentages							סדרה חדשה(3)		מיליוני ש"ח NIS million			
							אחוזים					
1984/85	2.2	9.4	6.9	19	12	45	100	800			1984/85	
1985/86	1.7	8.4	6.1	21	12	43	100	2,236			1985/86	
1986/87	1.4	8.3	6.3	23	12	42	100	3,224			1986/87	
1987/88	1.7	8.4	6.6	24	12	41	100	4,306			1987/88	
1988/89	2.0	8.9	6.9	24	12	42	100	5,427			1988/89	
1989/90	2.4	9.3	7.4	23	12	43	100	6,955			1989/90	
1990/91	1.8	9.4	7.2	23	13	42	100	8,510			1990/91	
1990	1.9	9.4	7.3	24	13	41	100	8,136			1990	
1991	1.4	9.2	6.9	24	13	41	100	10,041			1991	
1992	1.3	9.6	7.2	25	13	40	100	12,502			1992	
1993	1.6	9.7	7.4	23	12	44	100	14,969			1993	
1994	1.6	10.1	7.9	22	12	44	100	19,325			1994	
1995(4)	1.4	9.4	7.3	22	12	43	100	22,121			(4)1995	
1996	1.3	9.7	7.4	23	12	43	100	26,079			1996	
1997	1.3	10.0	7.5	23	12	44	100	29,804			1997	
1998	1.2	10.0	7.4	24	12	42	100	32,674			1998	
1999	1.4	9.7	7.2	22	12	44	100	34,818			1999	
2000	1.3	9.9	7.2	24	12	43	100	38,898			2000	
2001	1.5	10.2	7.7	24	12	43	100	42,258			2001	
2002	1.3	9.9	7.5	24	13	43	100	43,181			2002	
2003	1.3	9.9	7.5	25	13	43	100	43,253			2003	
2004	1.2	9.8	7.4	25	13	43	100	44,759			2004	
2005	1.2	9.9	7.4	26	12	44	100	47,353			2005	
2006	1.2	9.7	7.2	26	12	44	100	49,554			2006	
2007	1.1	9.6	7.2	28	12	43	100	52,761			2007	
2008	1.2	9.5	7.3	28	12	42	100	56,433			2008	
2009	1.2	9.8	7.4	28	12	42	100	60,139			2009	
2010	1.3	9.7	7.3	28	12	42	100	64,341			2010	
2011	1.3	9.6	7.3	28	12	42	100	68,632			2011	
2012	1.1	9.8	7.4	29	12	42	100	73,838			2012	
2013	1.2	9.9	7.4	29	11	42	100	78,423			2013	
2014	1.1	10.0	7.4	29	10	42	100	82,614			2014	
2015	1.1	10.0	7.4	29	10	42	100	86,323			2015	
2016	1.0	10.1	7.5	29	10	42	100	91,289			2016	
2017	1.2	10.2	7.6	29	10	42	100	96,727			2017	
2018	1.0	10.2	7.6	29	11	42	100	101,805			2018	
2019	1.0	10.3	7.6	29	11	42	100	107,441			2019	
2020	2.6	11.6	8.4	27	10	41	100	118,319			2020	
2021*	1.5	11.5	8.2	28	10	41	100	127,292			*2021	

(1) כולל בתי חולים פרטיים, רופאים ואחיות פרטיים, וכמו כן תרופות וחומרי רפואה, ומכשירים רפואיים שנקנו על ידי משקי בית על בסיס עסקי. לאומדנים אלה מהימנות נמוכה.  
 (2) משנת 1980/81 ואילך התמ"ג כולל מיסים נוט על היבוא.  
 (3) הונכסו שינויים בהגדרות. ראו מבוא, פרק 6: "תיקונים בהגדרות ובסיווגים" (סעיף 6.5).  
 (4) ראו מבוא, פרק 6: "תיקונים בהגדרות ובסיווגים" (סעיף 6.2).

**TABLE 2. NATIONAL EXPENDITURE ON HEALTH. BY TYPE OF EXPENDITURE AND SERVICE**

**לוח 2. הוצאה לאומית לבריאות, לפי סוג הוצאה ושירות**

שנה	השקעה בנסכים קבועים Fixed capital formation			הוצאה שוטפת Current expenditure							סך כולל Grand total	שנה	
	מספרות Clinics	בתי חולים Hospitals	סך הכל Total	תרופות, חומרי רפואה ומכשירים רפואיים שנקנו על ידי משקי בית(1) Medicines, medical supplies and medical equipment purchased by households(1)	רופאים פרטיים (1) Private physicians(1)	רפואת שיניים (1) Dental care(1)	בתי חולים ומחקר Hospitals and research	מרפאות ציבוריות ורפואה מונעת Public clinics and preventive medicine	מינהל ממשלתי Government administration	סך הכל Total			
													הוצאה לאומית לבריאות לנפש National expenditure on health per capita
	NIS million			מיליוני ש"ח									
1990	7,010	125	660	1,109	892	1,195	2,631	15,130	11,247	1,160	31,562	32,668	1990
1991	6,797	140	540	986	907	1,295	2,845	15,550	11,549	1,213	32,648	33,640	1991
1992	6,899	156	542	1,023	918	1,401	3,086	16,552	11,941	1,053	34,317	35,347	1992
1993	7,151	188	809	1,433	967	1,450	3,012	18,113	12,325	1,106	36,206	37,622	1993
1994	7,402	209	886	1,576	1,133	1,572	3,034	19,078	13,212	1,160	38,409	39,963	1994
1995(2)	7,593	306	847	1,732	1,617	1,498	3,016	18,952	14,657	1,497	40,406	42,110	(2)1995
1996	7,810	340	851	1,601	1,978	1,562	3,154	18,693	16,380	2,034	42,839	44,426	1996
1997	7,760	412	1,270	2,057	2,167	1,615	3,329	18,681	16,392	2,069	43,265	45,278	1997
1998	8,017	458	1,390	1,762	2,510	1,749	3,419	19,154	18,085	2,143	46,194	47,939	1998
1999	8,127	670	1,328	1,955	2,428	2,070	3,792	20,545	17,998	2,021	47,948	49,877	1999
2000	8,219	745	1,335	2,063	1,735	2,131	4,454	20,361	19,640	2,241	49,775	51,809	2000
2001	8,509	744	1,380	2,122	1,866	2,033	4,817	21,268	21,220	2,330	52,849	54,942	2001
2002	8,337	688	1,271	1,956	1,848	2,065	4,387	21,508	21,565	2,344	53,029	54,946	2002
2003	8,208	629	1,177	1,806	1,832	2,221	4,366	21,474	21,841	1,982	53,337	55,105	2003
2004	8,281	694	1,309	2,000	1,960	2,389	4,660	21,620	22,350	1,975	54,648	56,611	2004
2005	8,417	750	1,441	2,189	2,013	2,524	4,662	22,004	23,469	2,027	56,456	58,595	2005
2006	8,522	690	1,332	2,021	2,136	2,630	4,952	22,426	24,384	2,102	58,403	60,406	2006
2007	8,774	700	1,352	2,051	2,281	2,886	5,300	23,126	25,644	2,275	61,303	63,336	2007
2008	9,009	786	1,512	2,296	2,336	3,001	5,343	23,980	26,974	2,498	63,957	66,223	2008
2009	9,139	677	1,302	1,977	2,440	3,031	5,522	24,529	28,244	2,752	66,402	68,377	2009
2010	9,429	780	1,513	2,292	2,555	3,392	5,364	25,404	30,062	2,871	69,552	71,853	2010
2011	9,599	839	1,629	2,467	2,679	3,554	5,649	25,818	31,461	2,940	72,031	74,516	2011
2012	9,732	746	1,428	2,171	2,817	3,579	5,944	26,802	32,610	3,108	74,811	76,957	2012
2013	9,917	805	1,556	2,359	2,965	3,676	6,213	27,354	33,991	3,364	77,547	79,893	2013
2014	10,159	859	1,674	2,532	3,114	3,794	6,421	28,353	35,542	3,680	80,897	83,427	2014
2015	10,305	860	1,655	2,516	3,186	4,025	6,434	29,024	37,326	3,811	83,808	86,323	2015
2016	10,568	806	1,519	2,324	3,368	4,041	6,697	30,109	39,569	4,175	87,959	90,283	2016
2017	10,853	925	1,742	2,667	3,552	3,995	7,147	31,213	41,348	4,583	91,835	94,526	2017
2018	11,118	854	1,598	2,452	3,771	4,395	7,466	32,608	43,125	4,910	96,293	98,724	2018
2019	11,248	945	1,802	2,747	3,975	4,633	7,804	32,861	44,696	5,067	99,058	101,806	2019
2020	11,749	1,123	2,155	3,278	3,895	5,154	7,376	35,256	47,155	6,166	104,955	108,258	2020
2021*	12,553	1,180	2,361	3,555	4,417	5,296	8,674	36,693	49,911	8,742	114,007	117,584	*2021
	Percentage of quantity change – each year compared with the previous one			שינוי כמותי במונחי – כל שנה לעומת קודמתה									
1972/73	12.0	11.0	55.0	47.0	8.0	16.0	14.0	11.0	8.0	8.0	10.0	14.0	1972/73
1973/74	5.0	19.0	33.0	32.0	..	2.0	3.0	5.0	-2.0	15.0	4.0	8.0	1973/74
1974/75	9.0	52.0	12.0	16.0	9.0	8.0	10.0	10.0	11.0	20.0	10.0	11.0	1974/75
1975/76	5.0	0.0	14.0	12.0	3.0	4.0	2.0	8.0	6.0	-11.0	6.0	7.0	1975/76
1976/77	-2.0	0.0	-27.0	-24.0	12.0	5.0	6.0	9.0	1.0	4.0	5.0	0.0	1976/77
1977/78	3.0	-11.0	-11.0	-1.0	8.0	4.0	6.0	10.0	5.0	4.0	7.0	5.0	1977/78
1978/79	5.0	-3.0	19.0	16.0	-1.0	14.0	13.0	5.0	5.0	10.0	6.0	7.0	1978/79
1979/80	-4.0	-14.0	-23.0	-22.0	7.0	1.0	-2.0	2.0	-1.0	-12.0	1.0	-2.0	1979/80
1980/81	-4.0	24.0	-40.0	-31.0	-3.0	0.0	-3.0	3.0	1.0	14.0	1.0	-2.0	1980/81
1981/82	3.0	26.0	2.0	8.0	14.0	11.0	10.0	2.0	4.0	-14.0	4.0	5.0	1981/82
1982/83	3.0	20.0	8.0	11.0	14.0	12.0	10.0	3.0	3.0	-1.0	4.0	5.0	1982/83
1983/84	0.0	-2.0	10.0	6.0	7.0	11.0	4.0	-1.0	1.0	1.0	1.0	1.0	1983/84
1984/85	1.0	16.0	-12.0	-4.0	-1.0	-17.0	-2.0	3.0	8.0	-7.0	3.0	3.0	1984/85
1985/86	-2.0	-21.0	-17.0	-18.0	5.0	3.0	2.0	1.0	-1.0	13.0	1.0	0.0	1985/86
1986/87	3.0	5.0	-16.0	-9.0	24.0	20.0	18.0	0.0	3.0	0.0	5.0	4.0	1986/87
1987/88	6.0	43.0	47.0	45.0	10.0	9.0	9.0	2.0	3.0	16.0	4.0	7.0	1987/88
1988/89	1.0	-11.0	3.0	-3.0	0.0	2.0	2.0	2.0	6.0	3.0	3.0	3.0	1988/89
1989/90	5.0	9.0	19.0	16.0	4.0	4.0	4.0	6.0	9.0	3.0	6.0	7.0	1989/90
1990/91	0.0	-27.0	14.0	1.0	6.0	14.0	5.0	3.0	3.0	2.0	4.0	4.0	1990/91
1991	-3.0	11.4	-18.2	-11.1	1.7	8.4	8.1	2.8	2.7	4.6	3.4	3.0	1991
1992	1.5	11.3	0.5	3.8	1.2	8.2	8.5	6.4	3.4	-13.2	5.1	5.1	1992
1993	3.6	21.0	49.2	40.1	5.3	3.5	-2.4	9.4	3.2	5.1	5.5	6.4	1993
1994	3.5	11.2	9.5	10.0	17.2	8.4	0.7	5.3	7.2	4.8	6.1	6.2	1994
1995(2)	2.6	46.2	-4.5	9.9	42.7	-4.7	-0.6	-0.6	10.9	29.1	5.2	5.4	(2)1995
1996	2.9	11.3	0.5	-7.6	22.3	4.3	4.6	-1.4	11.8	35.8	6.0	5.5	1996
1997	-0.6	21.0	49.2	28.5	9.6	3.4	5.5	-0.1	0.1	1.7	1.0	1.9	1997
1998	3.3	11.2	9.5	-14.4	15.8	8.3	2.7	2.5	10.3	3.6	6.8	5.9	1998
1999	1.4	46.2	-4.5	11.0	-3.3	18.4	10.9	7.3	-0.5	-5.7	3.8	4.0	1999
2000	1.1	11.3	0.5	5.5	-28.5	2.9	17.4	-0.9	9.1	10.8	3.8	3.9	2000
2001	3.5	-0.3	3.4	2.8	7.6	-4.6	8.2	4.5	8.0	4.0	6.2	6.0	2001
2002	-2.0	-7.5	-7.9	-7.8	-1.0	1.6	-8.9	1.1	1.6	0.6	0.3	0.0	2002
2003	-1.5	-8.6	-7.4	-7.7	-0.9	7.6	-0.5	-0.2	1.3	-15.5	0.6	0.3	2003
2004	0.9	10.4	11.2	10.7	7.0	7.5	6.7	0.7	2.3	-0.3	2.5	2.7	2004
2005	1.7	8.1	10.1	9.5	2.7	5.7	0.0	1.8	5.0	2.6	3.3	3.5	2005
2006	1.2	-8.0	-7.5	-7.7	6.1	4.2	6.2	1.9	3.9	3.7	3.4	3.1	2006
2007	3.0	1.4	1.5	1.5	6.8	9.7	7.0	3.1	5.2	8.2	5.0	4.9	2007
2008	2.7	12.3	11.8	11.9	2.5	4.0	0.8	3.7	5.2	9.8	4.3	4.6	2008
2009	1.4	-13.9	-13.9	-13.9	4.4	1.0	3.3	2.3	4.7	10.2	3.8	3.3	2009
2010	3.2	15.2	16.2	15.9	4.7	11.9	-2.9	3.6	6.4	4.3	4.7	5.1	2010
2011	1.8	7.6	7.7	7.7	4.9	4.8	5.3	1.6	4.7	2.4	3.6	3.7	2011
2012	1.4	-11.1	-12.3	-12.0	5.1	0.7	5.2	3.8	3.7	5.7	3.9	3.3	2012
2013	1.9	7.9	8.9	8.6	5.3	2.7	4.5	2.1	4.2	8.2	3.7	3.8	2013
2014	2.4	6.7	7.6	7.3	5.0	3.2	3.4	3.7	4.6	9.4	4.3	4.4	2014
2015	1.4	0.2	-1.1	-0.7	2.3	6.1	0.2	2.4	5.0	3.6	3.6	3.5	2015
2016	2.6	-6.4	-8.3	-7.6	5.7	0.4	4.1	3.7	6.0	9.5	5.0	4.6	2016
2017	2.7	14.8	14.7	14.7	5.5	-1.1	6.7	3.7	4.5	9.8	4.4	4.7	2

**לוח 3. הוצאה לאומית לבריאות, לפי סוג הוצאה ושירות**

1962/63-2021

במחירים שוטפים

הוצאה שוטפת		Grand total				סך כולל		
מרפאות ציבוריות ורפואה מונעת(2)	מינהל ממשלתי Government administration	סך הכל Total	השקעה בנכסים קבועים Fixed capital formation	הוצאה שוטפת Current expenditure	סך הכל Total	סך הכל Total		
<b>סדרה 'שנה</b>								
<b>אחוזים</b>								
						אלפי ש"ח NIS thousands		
40	1	100	6	94	100	34	1962/63	
39	2	100	11	89	100	105	1970/71	
35	1	100	17	83	100	489	1975/76	
33	1	100	12	88	100	703	1976/77	
32	1	100	10	90	100	1,113	1977/78	
33	1	100	11	89	100	2,029	1978/79	
32	1	100	8	92	100	4,014	1979/80	
32	1	100	6	94	100	9,122	1980/81	
32	1	100	6	94	100	20,912	1981/82	
32	1	100	7	93	100	49,428	1982/83	
32	1	100	7	93	100	136,544	1983/84	
34	1	100	6	94	100	736,077	1984/85	
<b>סדרה חדשה(3)</b>								
<b>אחוזים</b>								
						מיליוני ש"ח NIS millions		
34	1	100	6	94	100	800	1984/85	
34	1	100	5	95	100	2,236	1985/86	
34	1	100	4	96	100	3,224	1986/87	
33	1	100	6	94	100	4,306	1987/88	
33	1	100	5	95	100	5,427	1988/89	
35	1	100	5	95	100	6,955	1989/90	
35	1	100	5	95	100	8,136	1990	
35	1	100	5	95	100	10,041	1991	
35	1	100	4	96	100	12,502	1992	
38	1	100	5	95	100	14,969	1993	
38	1	100	4	96	100	19,325	1994	
39	1	100	5	95	100	22,121	(4)1995	
40	1	100	5	95	100	26,079	1996	
40	1	100	4	96	100	29,804	1997	
40	1	100	4	96	100	32,674	1998	
42	1	100	4	96	100	34,818	1999	
45	1	100	4	96	100	38,898	2000	
44	1	100	4	96	100	42,258	2001	
46	1	100	4	96	100	43,181	2002	
46	1	100	3	97	100	43,253	2003	
46	1	100	3	97	100	44,759	2004	
43	4	100	3	97	100	47,353	2005	
45	4	100	3	97	100	49,554	2006	
44	4	100	3	97	100	52,761	2007	
44	4	100	3	97	100	56,433	2008	
44	5	100	3	97	100	60,139	2009	
44	5	100	3	97	100	64,341	2010	
45	5	100	4	96	100	68,632	2011	
44	5	100	3	97	100	73,838	2012	
44	4	100	3	97	100	78,423	2013	
44	4	100	3	97	100	82,614	2014	
44	5	100	3	97	100	86,323	2015	
44	5	100	3	97	100	91,289	2016	
44	5	100	3	97	100	96,727	2017	
44	5	100	3	97	100	101,805	2018	
44	6	100	3	97	100	107,441	2019	
44	6	100	6	94	100	118,319	2020	
42	9	100	4	96	100	127,292	*2021	

(1) אומדנים שמהימנותם נמוכה.

(2) ללא מרפאות חוץ בבתי חולים של קופות החולים.

(3) הוכנסו שינויים בהגדרות. ראו מבוא, פרק 6:

"תיקונים בהגדרות ובסיווגים" (סעיף 6.5).

(4) ראו מבוא, פרק 6: "תיקונים בהגדרות ובסיווגים" (סעיף 6.2).

**TABLE 3. NATIONAL EXPENDITURE ON HEALTH, BY TYPE OF EXPENDITURE AND SERVICE**

At current prices

1962/63-2021

	השקעה בנכסים קבועים Fixed capital formation			Current expenditure			
	מרפאות Clinics	בתי חולים Hospitals	סך הכל Total	תרופות ומכשירים רפואיים שנקנו על ידי משקי בית(1) Medicines and medical equipment purchased by households(1)	רופאים פרטיים(1) Private physicians(1)	רפואת שיניים(1) Dental care(1)	בתי חולים ומחקר Hospitals and research
	Old series						
	Percentages						
1962/63	56	44	100	5	15		39
1970/71	16	84	100	5	4	11	39
1975/76	13	87	100	5	4	14	41
1976/77	17	83	100	6	3	14	43
1977/78	17	83	100	6	3	14	44
1978/79	14	86	100	5	3	14	44
1979/80	15	85	100	5	3	13	46
1980/81	25	75	100	4	3	13	47
1981/82	30	70	100	5	3	13	46
1982/83	32	68	100	5	4	13	45
1983/84	29	71	100	5	4	14	44
1984/85	35	65	100	5	3	12	45
	New series(3)						
	Percentages						
1984/85	35	65	100	5	3	11	46
1985/86	34	66	100	5	3	12	45
1986/87	39	61	100	5	4	12	44
1987/88	39	61	100	5	5	13	43
1988/89	35	65	100	5	5	13	43
1989/90	33	67	100	4	5	13	42
1990	24	76	100	4	5	13	42
1991	31	69	100	5	5	12	42
1992	32	68	100	5	5	12	42
1993	29	71	100	5	4	11	41
1994	39	61	100	6	3	10	42
1995(4)	38	62	100	6	4	8	42
1996	38	62	100	6	4	8	41
1997	34	66	100	6	4	8	41
1998	18	82	100	7	4	8	40
1999	19	81	100	4	3	9	41
2000	16	84	100	4	4	9	37
2001	25	75	100	4	4	9	38
2002	25	75	100	4	4	8	37
2003	55	45	100	3	4	9	37
2004	26	74	100	2	5	9	37
2005	35	65	100	3	4	9	37
2006	25	75	100	3	4	8	36
2007	26	74	100	4	4	9	35
2008	24	76	100	4	4	9	35
2009	28	72	100	4	4	8	35
2010	25	75	100	4	4	8	35
2011	26	74	100	4	4	8	34
2012	28	72	100	4	5	8	34
2013	31	69	100	4	5	8	35
2014	38	62	100	4	5	8	35
2015	34	66	100	4	5	8	34
2016	34	66	100	4	5	8	34
2017	33	67	100	4	5	8	34
2018	34	66	100	4	5	8	34
2019	36	64	100	4	5	8	33
2020	25	75	100	4	5	7	34
2021*	43	57	100	4	5	7	33

(1) Low-reliability estimates.

(2) Excluding clinics in HMOs' hospitals.

(3) Changes in definitions have been introduced. See Introduction, Chapter 6:

"Revisions of Definitions and Classifications" (Section 6.5).

(4) See Introduction, Chapter 6: "Revisions of Definitions and Classifications" (Section 6.2).



**TABLE 5. NATIONAL EXPENDITURE ON HEALTH,  
BY FINANCING SECTOR(1)**
**לוח 5. הוצאה לאומית לבריאות,  
לפי מגזר מממן(1)**

At current prices		1995-2021					במחירים שוטפים		
תרומות מחו"ל	מימון פרטי Private financing		מסים מיועדים Earmarked taxes			מימון מתקציב המדינה Government budget financing	סך כולל Grand total		
	Donations from abroad	מזה: תשלומים ישירים של משקי בית Thereof: Housholds' out-of-pocket payments	סך הכל Total	מס בריאות Health tax	מס מקביל Parallel tax				סך הכל Total
NIS millions									
1995	580	6,123	7,033	4,711	4,757	9,468	5,040	22,121	1995
1996	675	6,767	7,930	6,256	5,549	11,805	5,669	26,079	1996
1997(2)	652	8,001	9,618	7,140	678	7,818	11,716	29,804	(2)1997
1998	733	9,081	11,008	7,874	32	7,906	13,028	32,675	1998
1999	926	8,973	11,618	8,726	-	8,726	13,548	34,818	1999
2000	809	10,814	13,970	9,762	-	9,762	14,357	38,898	2000
2001	819	11,819	15,377	10,577	-	10,577	15,485	42,258	2001
2002	940	11,036	15,037	10,883	-	10,883	16,321	43,181	2002
2003	860	10,779	15,516	10,851	-	10,851	16,026	43,253	2003
2004	1,000	11,233	16,165	11,310	-	11,310	16,283	44,759	2004
2005	985	12,323	17,629	11,829	-	11,829	16,909	47,353	2005
2006	1,128	12,590	18,184	12,559	-	12,559	17,683	49,554	2006
2007	1,189	14,232	20,486	13,456	-	13,456	17,629	52,761	2007
2008	1,211	14,556	21,719	14,574	-	14,574	18,929	56,433	2008
2009	1,111	15,271	23,185	14,995	-	14,995	20,848	60,139	2009
2010	1,290	15,369	23,767	16,290	-	16,290	22,994	64,341	2010
2011	1,493	16,234	25,367	17,415	-	17,415	24,357	68,632	2011
2012	1,462	17,325	27,409	18,119	-	18,119	26,848	73,838	2012
2013	1,550	17,768	28,351	18,922	-	18,922	29,600	78,423	2013
2014	1,447	18,618	29,683	19,791	-	19,791	31,693	82,614	2014
2015	1,616	19,519	31,233	20,782	-	20,782	32,692	86,323	2015
2016	1,613	20,341	32,686	21,919	-	21,919	35,071	91,289	2016
2017	1,887	21,288	34,019	23,032	-	23,032	37,789	96,727	2017
2018	2,021	21,798	35,239	24,260	-	24,260	40,285	101,805	2018
2019	2,070	22,414	36,893	25,459	-	25,459	43,019	107,441	2019
2020	1,285	21,607	35,421	25,266	-	25,266	56,347	118,319	2020
2021*	1,324	26,006	40,918	27,307	-	27,307	57,743	127,292	2021*
Percentages									
1995	2.6	27.7	31.8	21.3	21.5	42.8	22.8	100.0	1995
1996	2.6	26.0	30.4	24.0	21.3	45.3	21.7	100.0	1996
1997(2)	2.2	26.8	32.2	24.0	2.3	26.3	39.3	100.0	(2)1997
1998	2.2	27.8	33.7	24.1	0.1	24.2	39.9	100.0	1998
1999	2.7	25.8	33.3	25.1	-	25.1	38.9	100.0	1999
2000	2.1	27.8	35.9	25.1	-	25.1	36.9	100.0	2000
2001	1.9	28.0	36.4	25.1	-	25.1	36.6	100.0	2001
2002	2.2	25.6	34.8	25.2	-	25.2	37.8	100.0	2002
2003	2.0	24.9	35.9	25.1	-	25.1	37.1	100.1	2003
2004	2.2	25.1	36.1	25.3	-	25.3	36.4	100.0	2004
2005	2.1	26.0	37.2	25.0	-	25.0	35.7	100.0	2005
2006	2.3	25.4	36.7	25.3	-	25.3	35.7	100.0	2006
2007	2.3	27.0	38.8	25.5	-	25.5	33.4	100.0	2007
2008	2.1	25.8	38.5	25.8	-	25.8	33.6	100.0	2008
2009	1.9	25.4	38.6	24.9	-	24.9	34.6	100.0	2009
2010	2.0	23.9	36.9	25.3	-	25.3	35.8	100.0	2010
2011	2.2	23.7	37.0	25.4	-	25.4	35.4	100.0	2011
2012	2.0	23.5	37.1	24.5	-	24.5	36.4	100.0	2012
2013	2.0	22.7	36.2	24.1	-	24.1	37.7	100.0	2013
2014	1.8	22.5	35.9	23.9	-	23.9	38.4	100.0	2014
2015	1.9	22.6	36.1	24.1	-	24.1	37.9	100.0	2015
2016	1.8	22.3	35.8	24.0	-	24.0	38.4	100.0	2016
2017	2.0	22.0	35.2	23.8	-	23.8	39.0	100.0	2017
2018	2.0	21.4	34.6	23.8	-	23.8	39.6	100.0	2018
2019	1.9	20.9	34.3	23.7	-	23.7	40.1	100.0	2019
2020	1.1	18.3	29.9	21.4	-	21.4	47.6	100.0	2020
2021*	1.0	20.4	32.1	21.5	-	21.5	45.4	100.0	*2021

(1) Financing of each sector includes use of own resources and net payments to other sectors, excluding interest.

(2) In 1997 parallel tax was cancelled, and since then financing of HMOs has been transferred through the Ministry of Health.

(1) מימון של כל מגזר כולל ביצוע עצמי ותשלומים נטו למגזרים אחרים, למעט ריבית.

(2) בשנת 1997 בוטל המס המקביל, ומאז המימון לקופות החולים מועבר דרך משרד הבריאות.

**TABLE 6. NATIONAL EXPENDITURE ON HEALTH,  
SUPPLY AND FINANCE, BY SECTOR**

**לוח 6. הוצאה לאומית לבריאות,  
אספקה ומימון, לפי מגזר**

	2020						מיליוני ש"ח, במחירים שוטפים	
	Supply of services				ברוטו סך הכל	פחות: קניות מיצרנים אחרים		אספקת שירותים סופי
	Gross יצרנים שלרם קונת רווח (1)	מוסדות אחרים ללא קונת רווח	קופות חולים	ממשלה ורשויות מקומיות				
<b>FINANCE</b>					1	2	3=1-2	
Government and local authorities(2)	1,480	3,082	58,154	22,026	<b>84,742</b>	8,055	<b>76,687</b>	מימון
Health funds	2,362	4,590	2,582	11,491	<b>21,025</b>	18,443	<b>2,582</b>	ממשלה ורשויות מקומיות(2)
Other non-profit institutions	-	889	-	-	<b>889</b>	-	<b>889</b>	קופות חולים
For-profit producers(1)	-	100	336	216	<b>651</b>	651	-	מוסדות אחרים ללא קונת רווח
Households	28,685	2,966	5,588	921	<b>38,161</b>	-	<b>38,161</b>	יצרנים שלרם קונת רווח(1)
<b>Grand total</b>	<b>32,527</b>	<b>11,627</b>	<b>66,660</b>	<b>34,654</b>	<b>145,468</b>	<b>27,149</b>	<b>118,319</b>	מוסדות אחרים ללא קונת רווח
Less: purchases of services from other producers	651	-	18,443	8,055	<b>27,149</b>			משיק בית
Services for final use	<b>31,876</b>	<b>11,627</b>	<b>48,217</b>	<b>26,599</b>	<b>118,319</b>			סך כולל

**TABLE 6. NATIONAL EXPENDITURE ON HEALTH,  
SUPPLY AND FINANCE, BY SECTOR (Cont.)**

NIS million, at current prices

2019

**לוח 6. הוצאה לאומית לבריאות,  
אספקה ומימון, לפי מגזר (המשך)**  
מיליוני ש"ח, במחירים שוטפים

	Supply of services				סך הכל	ברוטו	פחות: קניית מוצרים אחרים	אספקת שירותים סופי	שירותים לשממש סופי	שירותים לשממש סופי
	Gross יצרנים שלרם נונת רווח (1)	מוסדות אחרים ללא נונת רווח	קופות חולים	ממשלה ורשויות מקומיות						
<b>FINANCE</b>										
Government and local authorities(2)	1,433	2,745	54,342	14,479	<b>72,999</b>		7,696	<b>65,303</b>		ממשלה ורשויות מקומיות(2)
Health maintenance organizations	2,132	4,227	2,208	11,383	<b>19,950</b>		17,742	<b>2,208</b>		קופות חולים
Other non-profit institutions	-	1,424	-	-	<b>1,424</b>		-	<b>1,424</b>		מוסדות אחרים ללא נוננת רווח
For-profit producers(1)	-	116	408	176	<b>700</b>		700	-		יצרנים שלרם נוננת רווח(1)
Households	29,341	2,828	5,734	604	<b>38,507</b>		-	<b>38,507</b>		משקי בית
<b>Grand total</b>	<b>32,906</b>	<b>11,340</b>	<b>62,692</b>	<b>26,642</b>	<b>133,580</b>		<b>26,138</b>	<b>107,441</b>		<b>סך כולל</b>
Less: purchases of services from other producers	700	-	17,742	7,696	<b>26,138</b>					פחות: קניית שירותים מוצרנים אחרים
Services for final use	<b>32,206</b>	<b>11,340</b>	<b>44,950</b>	<b>18,946</b>	<b>107,442</b>					שירותים לשממש סופי

(1) Including private hospitals, private physicians and nurses,  
as well as medicines and medical supplies, and medical equipment purchased  
by households on a commercial basis.

See Introduction, Section 3.4: "Classification of Expenditure  
by Sector" (Para. 3.4.1).

(2) Including financing through health tax, as well as from the government budget.

(1) כולל בתי חולים פרטיים, רופאים פרטיים, רופאים ואחיות פרטיים,

וכן תרופות וחומרי רפואה, ומכשירים רפואיים שנקנו

על ידי משקי בית על בסיס עסקי.

ראו מבוא, סעיף 3.4:

"סיווג ההוצאה לפי מגזר" (פסקה 3.4.1).

(2) כולל מימון באמצעות מס בריאות ומימון מתקציב המדינה.

**TABLE 7. RECEIPTS AND DISBURSEMENTS(1) IN  
HEALTH SERVICES OF THE GOVERNMENT AND  
LOCAL AUTHORITIES AND OF HEALTH MAINTENANCE  
ORGANIZATIONS – CONSOLIDATED ACCOUNT(2)**

**לוח 7. תקבולים ותשלומים(1)  
בשירותי הבריאות של הממשלה  
והרשויות המקומיות ושל קופות  
החולים – חשבון מאוחד(2)**

At current prices	2016-2020					במחירים שוטפים	
	2020	2019	2018	2017	2016		
	מיליוני ש"ח NIS million	Percentages				אחוזים	
<b>RECEIPTS - TOTAL</b>	<b>86,345</b>	<b>100.0</b>	<b>100.0</b>	<b>100.0</b>	<b>100.0</b>	<b>100.0</b>	<b>תקבולים - סך הכל</b>
GOVERNMENT BUDGET FINANCING AND HMOs' DEFICIT	23,072	26.7	20.4	21.9	21.9	22.4	מימון מתקציב המדינה וגירעון של קופות החולים
SUPPLEMENTS TO NATIONAL HEALTH INSURANCE LAW	30,928	35.8	36.0	34.2	34.0	32.7	השלמות לחוק ביטוח בריאות
HEALTH TAX	25,267	29.3	34.2	34.3	34.5	34.5	מס בריאות
EARMARKED RECEIPTS – TOTAL	7,078	8.2	9.4	9.6	9.7	10.4	תקבולים מיועדים – סך הכל
SALES OF GOODS AND SERVICES TO:							מכירת מוצרים ושירותים
1. The business sector(3)	552	0.6	0.8	0.8	0.6	1.1	1. למגזר העסקי(3)
2. Households	6,220	7.2	8.3	8.4	8.9	9.1	2. למשקי בית
CURRENT TRANSFERS							העברות שוטפות
From donations in Israel and abroad	-	-	-	-	-	-	מתרומות בארץ ובחו"ל
CAPITAL TRANSFERS							העברות הון
From donations in Israel and abroad	307	0.4	0.3	0.4	0.2	0.2	מתרומות בארץ ובחו"ל
<b>DISBURSEMENTS - TOTAL</b>	<b>86,345</b>	<b>100.0</b>	<b>100.0</b>	<b>100.0</b>	<b>100.1</b>	<b>100.0</b>	<b>תשלומים - סך הכל</b>
CURRENT EXPENDITURE ON GOODS AND SERVICES:							הוצאה שוטפת על מוצרים ושירותים
1. Produced by the government and local authorities, and by HMOs(3)	68,347	79.2	82.7	83.2	83.6	84.3	1. שיוצרו על ידי הממשלה והרשויות המקומיות, ועל ידי קופות החולים(3)
2. Purchased from other non-profit health institutions	7,244	8.4	8.9	8.8	8.5	8.2	2. שנקנו ממוסדות בריאות אחרים ללא כוונת רווח
3. Purchased from the business sector	3,842	4.4	4.8	4.7	3.9	3.9	3. שנקנו מהמגזר העסקי
CURRENT TRANSFERS TO:							העברות שוטפות
1. Other non-profit health institutions	428	0.5	0.4	0.5	0.4	0.4	1. למוסדות בריאות אחרים ללא כוונת רווח
2. Households	17	0.0	0.1	0.1	0.1	0.1	2. למשקי בית
FIXED CAPITAL FORMATION							השקעה בנכסים קבועים של הממשלה והרשויות המקומיות, ושל קופות החולים(3)
Of the government and local authorities, and of HMOs(3)	6,467	7.5	3.1	2.7	3.6	3.1	העברות הון למוסדות בריאות אחרים ללא כוונת רווח
CAPITAL TRANSFERS To other non-profit health institutions	-	-	-	-	-	-	

(1) Excluding provision and repayment of loans, interest (receipts and payments) and income from property.

(2) In the consolidated account, receipts and disbursements between the government and local authorities and the HMOs were cancelled (see details in Table 8).

(3) No change in definition of sector.

(1) לא כולל מתן הלוואות ופירעון, ריבית (הכנסות והוצאות) והכנסה מרכוש.

(2) בחשבון המאוחד בוטלו התקבולים והתשלומים בין הממשלה והרשויות המקומיות לבין קופות החולים (ראו פירוט בלוח 8).

(3) ללא שינוי בהגדרת המגזר.

TABLE 8. RECEIPTS AND DISBURSEMENTS(1)

IN HEALTH SERVICES OF THE GOVERNMENT  
AND LOCAL AUTHORITIES, OF HEALTH MAINTENANCE  
ORGANIZATIONS AND OF PRIVATE NPIS(2)

לוח 8. תקבולים ותשלומים(1)  
בשירותי הבריאות של הממשלה  
והרשויות המקומיות, של קופות החולים  
ושל מלכ"רים פרטיים(2)

NIS million, at current prices

2019-2020

מיליוני ש"ח, במחירים שוטפים

	2020			2019			
	מלכ"רים פרטיים Private NPIS	קופות חולים Health maintenance organizations	ממשלה ורשויות מקומיות Government and local authorities	מלכ"רים פרטיים Private NPIS	קופות חולים Health maintenance organizations	ממשלה ורשויות מקומיות Government and local authorities	
<b>RECEIPTS - TOTAL</b>	<b>11,652</b>	<b>66,658</b>	<b>89,330</b>	<b>11,363</b>	<b>62,693</b>	<b>77,514</b>	<b>תקבולים - סך הכל</b>
GOVERNMENT BUDGET FINANCING AND DEFICIT OF HEALTH FUNDS AND NON-PROFIT INSTITUTIONS	1,013	1,734	20,491	1,507	1,961	13,015	מימון מתקציב המדינה, וגירעון של קופות החולים ומוסדות ללא כוונת רווח
HEALTH TAX	-	-	25,267	-	-	25,460	מס בריאות
Supplements to National Health Insurance Law	-	-	30,927	-	-	26,828	השלמות לחוק ביטוח בריאות
EARMARKED RECEIPTS - TOTAL	10,639	64,923	12,645	9,856	60,732	12,211	תקבולים מיועדים - סך הכל
SALES OF GOODS AND SERVICES TO:							מכירת מוצרים ושירותים
1. The government	1,850	3,921	-	1,954	3,827	-	1. לממשלה
2. HMOs	4,240	-	11,491	4,056	-	11,383	2. לקופות החולים
3. Business sector	100	336	216	115	408	176	3. למגזר העסקי
4. Households	873	5,498	722	842	5,585	587	4. למשקי בית
CURRENT TRANSFERS FROM:							העברות שוטפות
1. Government and local authorities	1,379	860	-	764	896	-	1. מהממשלה
2. Government - supplements to National Health Insurance Law	-	30,928	-	-	26,828	-	2. מהממשלה - השלמות לחוק ביטוח בריאות
3. Government - Health Tax	-	22,415	-	-	22,708	-	3. מהממשלה - מס בריאות
4. HMOs	38	-	-	48	-	-	4. מקופות החולים
5. Donations in Israel and abroad	1,549	-	-	1,584	-	-	5. מתרומות בארץ ובח"ל
CAPITAL TRANSFERS FROM:							העברות הון
1. Government and local authorities	46	874	-	73	331	-	1. מהממשלה
2. Donations in Israel and abroad	563	90	217	420	149	65	2. מתרומות בארץ ובח"ל
<b>DISBURSEMENTS - TOTAL</b>	<b>11,652</b>	<b>66,658</b>	<b>89,330</b>	<b>11,363</b>	<b>62,693</b>	<b>77,514</b>	<b>תשלומים - סך הכל</b>
CURRENT EXPENDITURE ON GOODS AND SERVICES:							הוצאה שוטפת על מוצרים ושירותים
1. Produced by the sector(3)	10,666	45,924	22,427	10,591	43,681	17,873	1. שיוצרו על ידי המגזר(3)
2. Purchased from the government	-	11,490	-	-	11,383	-	2. שנקנו מהממשלה
3. Purchased from HMOs	-	-	3,921	-	-	3,827	3. שנקנו מקופות החולים
4. Purchased from other non-profit health institutions	-	4,589	2,654	-	4,227	2,435	4. שנקנו ממוסדות בריאות אחרים ללא כוונת רווח
5. Purchased from the business sector	-	2,361	1,480	-	2,132	1,433	5. שנקנו מהמגזר העסקי
CURRENT TRANSFERS TO:							העברות שוטפות
1. Government and local authorities	-	-	-	-	-	-	1. לממשלה ולרשויות המקומיות
2. HMOs	5	-	860	6	-	896	2. לקופות החולים
3. HMOs - supplements to National Health Insurance Law	-	-	30,927	-	-	26,828	3. לקופות החולים - השלמות לחוק ביטוח בריאות
4. HMOs - Health Tax	-	-	22,415	-	-	22,708	4. לקופות החולים - מס בריאות
5. Other non-profit health institutions	-	-	428	-	-	310	5. למוסדות בריאות אחרים ללא כוונת רווח
6. Households	20	-	17	18	-	49	6. למשקי בית
FIXED CAPITAL FORMATION(3)	961	2,294	4,172	748	1,270	1,072	השקעה בנכסים קבועים(3)
CAPITAL TRANSFERS TO:							העברות הון
1. HMOs	-	-	29	-	-	83	1. לקופות החולים
2. Other non-profit health institutions	-	-	-	-	-	-	2. למוסדות בריאות אחרים ללא כוונת רווח

(1) Excluding provision and repayment of loans, interest (receipts and payments) and income from property.

(2) Some of the flows of disbursements and receipts between the government, the HMOs and other non-profit health institutions are presented in this table as recorded in the financial reports of each of the above mentioned bodies, without adjustment; therefore, the parallel movements are not necessarily identical.

(3) No change in definition of sector.

(1) לא כולל מתן הלוואות ופירעון, ריבית (הכנסות והוצאות) והכנסה מרכוש.

(2) חלק מזרמי התקבולים והתשלומים בין הממשלה, קופות החולים ומלכ"רים פרטיים מוצגים בלוח זה כפי שנרשמו בדוחות הכספיים של כל אחד מהגופים הנ"ל, ללא התאמה. אי לכך, התנועות המקבילות אינן בהכרח זהות. (3) ללא שינוי בהגדרת המגזר.

**TABLE 9. NATIONAL EXPENDITURE ON HEALTH,  
BY OPERATING SECTOR (NEW CLASSIFICATION)**

**לוח 9. הוצאה לאומית לבריאות,  
לפי מגזר מבצע (מיון חדש)**

At 2015 prices		2003–2021				במחירי 2015	
	יצרני שוק(1) Market producers(1)	מלכ"רים פרטיים Private NPIs	קופות חולים Health maintenance organizations	ממשלה ורשויות מקומיות Government and local authorities	סך הכל Total		
	NIS million					מיליוני ש"ח	
2003(1)	32,081	2,582	17,261	3,234	55,105	(1)2003	
2004	33,226	2,646	17,616	3,221	56,611	2004	
2005	34,103	2,761	18,486	3,293	58,595	2005	
2006	35,149	2,774	19,160	3,370	60,406	2006	
2007	37,075	2,889	20,056	3,399	63,336	2007	
2008	38,560	3,083	21,058	3,582	66,223	2008	
2009	39,505	3,048	21,910	3,959	68,377	2009	
2010	41,154	3,235	23,443	4,040	71,853	2010	
2011	42,532	3,298	24,671	4,035	74,516	2011	
2012	43,922	3,526	25,326	4,198	76,957	2012	
2013	45,400	3,646	26,358	4,497	79,893	2013	
2014	47,460	3,749	27,418	4,806	83,427	2014	
2015	48,770	3,716	28,949	4,888	86,323	2015	
2016	50,665	3,786	30,542	5,290	90,283	2016	
2017	52,978	3,927	32,009	5,614	94,526	2017	
2018	56,016	3,934	33,002	5,781	98,724	2018	
2019	57,529	3,948	34,419	5,938	101,806	2019	
2020	60,056	3,991	36,317	8,000	108,258	2020	
2021*	63,523	4,280	37,443	11,615	117,584	*2021	
	שינוי כמותי באחוזים – כל שנה לעומת קודמתה				שינוי כמותי באחוזים – כל שנה לעומת קודמתה		
	Percentage of quantity change – each year compared with the previous one				שינוי כמותי באחוזים – כל שנה לעומת קודמתה		
2004	3.6	2.5	2.1	-0.4	2.7	2004	
2005	2.6	4.3	4.9	2.2	3.5	2005	
2006	3.1	0.5	3.6	2.3	3.1	2006	
2007	5.5	4.1	4.7	0.9	4.9	2007	
2008	4.0	6.7	5.0	5.4	4.6	2008	
2009	2.4	-1.1	4.0	10.5	3.3	2009	
2010	4.2	6.1	7.0	2.0	5.1	2010	
2011	3.3	1.9	5.2	-0.1	3.7	2011	
2012	3.3	6.9	2.7	4.0	3.3	2012	
2013	3.4	3.4	4.1	7.1	3.8	2013	
2014	4.5	2.8	4.0	6.9	4.4	2014	
2015	2.8	-0.9	5.6	1.7	3.5	2015	
2016	3.9	1.9	5.5	8.2	4.6	2016	
2017	4.6	3.7	4.8	6.1	4.7	2017	
2018	5.7	0.2	3.1	3.0	4.4	2018	
2019	2.7	0.4	4.3	2.7	3.1	2019	
2020	4.4	1.1	5.5	34.7	6.3	2020	
2021*	5.8	7.2	3.1	45.2	8.6	*2021	

(1) Market producers include: For-profit producers (private hospitals, private physicians and nurses, etc.), as well as general hospitals owned by the government, by HMOs and by private NPIs. See Introduction, Section 3.4: "Classification of Expenditure by Sector" (Para. 3.4.1).

(1) יצרני שוק כוללים: יצרנים שלהם כוונת רווח (בתי חולים פרטיים, רופאים ואחיות פרטיים וכד'), וכמו כן בתי חולים כלליים בבעלות של הממשלה, של קופות החולים ושל מלכ"רים פרטיים. ראו מבוא, סעיף 3.4: "סיווג ההוצאה לפי מגזר" (פסקה 3.4.1).

**TABLE 9A. NATIONAL EXPENDITURE ON HEALTH,  
BY OPERATING SECTOR  
(PREVIOUS CLASSIFICATION)**

**לוח 9א. הוצאה לאומית לבריאות,  
לפי מגזר מבצע (מיון קודם)**

At 2015 prices

1995-2021

במחירי 2015

	יצרנים שלהם (כוונת רווח(1))	מלכ"רים פרטיים ובתי חולים שבבעלותם	קופות חולים ובתי חולים שבבעלותן	ממשלה ורשויות מקומיות, ובתי חולים שבבעלות הממשלה	סך הכל	
	For-profit producers(1)	Private NPIs and hospitals owned by them	Health maintenance organizations and hospitals owned by them	Government and local authorities, and hospitals owned by the government	Total	
	NIS million				מיליוני ש"ח	
1995	8,920	4,679	18,987	9,406	42,110	1995
1996	9,861	5,113	19,327	9,835	44,426	1996
1997	10,333	5,321	19,376	9,912	45,278	1997
1998	10,561	5,634	20,592	10,524	47,939	1998
1999	11,630	5,824	21,184	10,736	49,877	1999
2000(2)	13,263	6,106	20,412	12,290	51,809	(2)2000
2001	14,176	6,211	21,894	12,923	54,942	2001
2002	13,769	6,446	22,265	12,640	54,946	2002
2003	14,069	6,462	22,433	12,268	55,105	2003
2004	15,076	6,755	22,842	12,019	56,611	2004
2005	15,601	6,953	23,819	12,281	58,595	2005
2006	16,410	6,938	24,660	12,450	60,406	2006
2007	17,815	7,102	25,831	12,645	63,336	2007
2008	18,505	7,477	27,114	13,173	66,223	2008
2009	19,294	7,379	28,046	13,736	68,377	2009
2010	20,031	7,964	29,941	13,931	71,853	2010
2011	21,070	8,131	31,289	14,017	74,516	2011
2012	22,025	8,443	32,146	14,322	76,957	2012
2013	23,119	8,446	33,318	15,008	79,893	2013
2014	24,373	8,637	34,578	15,845	83,427	2014
2015	25,180	8,700	36,290	16,155	86,323	2015
2016	26,419	8,926	38,112	16,827	90,283	2016
2017	27,708	9,302	40,031	17,486	94,526	2017
2018	29,684	9,477	41,136	18,436	98,724	2018
2019	31,011	9,696	42,913	18,179	101,806	2019
2020	30,620	9,967	45,275	22,426	108,258	2020
2021*	34,308	10,584	46,710	25,887	117,584	*2021
	Percentage of quantity change – each year compared with the previous one				שינוי כמותי באחוזים – כל שנה לעומת קודמתה	
1996	10.5	9.3	1.8	4.6	5.5	1996
1997	4.8	4.1	0.3	0.8	1.9	1997
1998	2.2	5.9	6.3	6.2	5.9	1998
1999	10.1	3.4	2.9	2.0	4.0	1999
2000(2)	14.0	4.8	-3.6	14.5	3.9	(2)2000
2001	6.9	1.7	7.3	5.1	6.0	2001
2002	-2.9	3.8	1.7	-2.2	0.0	2002
2003	2.2	0.3	0.8	-2.9	0.3	2003
2004	7.2	4.5	1.8	-2.0	2.7	2004
2005	3.5	2.9	4.3	2.2	3.5	2005
2006	5.2	-0.2	3.5	1.4	3.1	2006
2007	8.6	2.4	4.7	1.6	4.9	2007
2008	3.9	5.3	5.0	4.2	4.6	2008
2009	4.3	-1.3	3.4	4.3	3.3	2009
2010	3.8	7.9	6.8	1.4	5.1	2010
2011	5.2	2.1	4.5	0.6	3.7	2011
2012	4.5	3.8	2.7	2.2	3.3	2012
2013	5.0	0.0	3.6	4.8	3.8	2013
2014	5.4	2.3	3.8	5.6	4.4	2014
2015	3.3	0.7	4.9	2.0	3.5	2015
2016	4.9	2.6	5.0	4.2	4.6	2016
2017	4.9	4.2	5.0	3.9	4.7	2017
2018	7.1	1.9	2.8	5.4	4.4	2018
2019	4.5	2.3	4.3	-1.4	3.1	2019
2020	-1.3	2.8	5.5	23.4	6.3	2020
2021*	12.0	6.2	3.2	15.4	8.6	*2021

(1) See Introduction, Section 3.4: "Classification of Expenditure by Sector".

(1) ראו מבוא, סעיף 3.4: "סיווג ההוצאה לפי מגזר".

(2) See Introduction, Chapter 6: "Revisions of Definitions and Classifications" (Section 6.4).

(2) ראו מבוא, פרק 6: "תיקונים בהגדרות ובסיווגים" (סעיף 6.4).

**TABLE 10. EXPENDITURE OF THE GOVERNMENT AND LOCAL AUTHORITIES, OF HEALTH MAINTENANCE ORGANIZATIONS AND OF PRIVATE NPIS ON HEALTH SERVICES, BY TYPE OF EXPENDITURE**

**לוח 10. הוצאות הממשלה והרשויות המקומיות, קופות החולים ומלכ"רים פרטיים על שירותי בריאות, לפי סוג הוצאה**

NIS million, at current prices	2019-2020				מיליוני ש"ח, במחירים שוטפים
	מלכ"רים פרטיים	קופות חולים	ממשלה ורשויות מקומיות	סך הכל	
	Private NPIS	Health maintenance organizations	Government and local authorities	Total	
	(1)2019				
<b>GRAND TOTAL</b>	<b>4,960</b>	<b>35,859</b>	<b>6,108</b>	<b>46,927</b>	<b>סך כולל</b>
CURRENT EXPENDITURE – TOTAL	4,598	34,936	5,712	45,246	הוצאה שוטפת – סך הכל
Labour cost(2)	2,890	11,582	3,113	17,585	עלות העבודה(2)
Current purchases	1,423	22,705	2,267	26,395	קניות שוטפות
Thereof: Medicines, medical supplies and medical equipment	168	10,586	453	11,207	מזה: תרופות, חומרי רפואה ומכשירים רפואיים
Consumption of fixed capital	285	649	332	1,266	בלאי
FIXED CAPITAL FORMATION – TOTAL	362	923	396	1,681	השקעה בנכסים קבועים – סך הכל
Buildings and other construction works	163	552	55	770	מבנים ועבודות בנייה אחרות
Machinery and equipment	199	371	341	911	מכונות וציוד
	(1)2020				
<b>GRAND TOTAL</b>	<b>4,936</b>	<b>38,136</b>	<b>10,935</b>	<b>54,007</b>	<b>סך כולל</b>
CURRENT EXPENDITURE – TOTAL	4,446	36,460	7,694	48,600	הוצאה שוטפת – סך הכל
Labour cost(2)	2,846	12,210	3,187	18,243	עלות העבודה(2)
Current purchases	1,302	23,580	4,149	29,031	קניות שוטפות
Thereof: Medicines, medical supplies and medical equipment	175	10,489	3,578	14,242	מזה: תרופות, חומרי רפואה ומכשירים רפואיים
Consumption of fixed capital	298	671	358	1,327	בלאי
FIXED CAPITAL FORMATION – TOTAL	490	1,676	3,241	5,407	השקעה בנכסים קבועים – סך הכל
Buildings and other construction works	348	1,160	89	1,597	מבנים ועבודות בנייה אחרות
Machinery and equipment	142	516	3,152	3,810	מכונות וציוד

(1) Since 2003, general hospitals have not been included in the government and non-profit institutions sectors. See explanation in Introduction, Chapter 6: "Revisions of Definitions and Classifications" (Section 6.3).

(2) Including: wages and salaries, other labour expenses, and taxes on wages.

(1) משנת 2003 בתי החולים הכלליים אינם כלולים בממשלה ובמגזרים הפועלים ללא כוונת רווח.

ראו הסבר במבוא, פרק 6: "תיקונים בהגדרות ובסיווגים" (סעיף 6.3).

(2) כולל: שכר ומשכורת, הוצאות עבודה נוספות ומיסים על השכר.

**TABLE 11. SUPPLY OF MEDICINES, MEDICAL SUPPLIES AND MEDICAL EQUIPMENT (INCLUDING SUPPLY AS PART OF MEDICAL TREATMENT)**

**לוח 11. אספקה של תרופות, חומרי רפואה ומכשירים רפואיים (כולל אספקה כחלק מטיפול רפואי)**

At current prices, NIS million

2000-2020

במחירים שוטפים, מיליוני ש"ח

	Businesses עסקים				מלכ"רים פרטיים Private NPIs	ממשלה Government	קופות חולים Health maintenance organizations	סך כולל Grand total	
	אחר Other	רפואת שיניים Dental care	בתי חולים פרטיים Private hospitals	סך הכל Total					
2000	1,592	118	112	1,822	298	750	4,156	7,026	2000
2001	1,507	131	119	1,757	352	845	4,359	7,313	2001
2002	1,119	123	118	1,360	336	958	4,648	7,302	2002
2003	926	126	119	1,171	330	965	5,016	7,482	2003
2004	1,421	138	128	1,687	353	988	5,167	8,195	2004
2005	1,439	140	133	1,712	373	1,164	5,552	8,801	2005
2006	1,861	164	143	2,168	389	1,208	5,823	9,588	2006
2007	2,087	175	124	2,386	414	1,236	6,163	10,199	2007
2008	2,087	175	124	2,386	414	1,351	6,315	10,466	2008
2009	2,416	184	131	2,731	449	1,553	6,762	11,495	2009
2010	2,415	188	134	2,737	460	1,581	7,168	11,946	2010
2011	2,658	199	141	2,998	499	1,676	7,564	12,737	2011
2012	2,603	201	143	2,947	541	1,677	8,100	13,265	2012
2013	2,739	212	151	3,102	572	1,801	8,456	13,931	2013
2014	2,673	212	151	3,036	634	1,947	8,881	14,498	2014
2015	2,912	227	161	3,300	699	2,225	9,566	15,790	2015
2016	3,105	236	168	3,509	744	2,229	9,891	16,373	2016
2017	3,404	251	179	3,834	784	2,339	10,038	16,995	2017
2018	3,672	268	190	4,130	839	2,375	11,193	18,537	2018
2019	3,942	284	202	4,428	861	2,542	11,832	19,663	2019
2020	4,727	315	224	5,266	938	5,696	11,767	23,667	2020

**TABLE 11A. DIRECT PURCHASE OF  
 MEDICINES, MEDICAL SUPPLIES  
 AND MEDICAL EQUIPMENT  
 BY HOUSEHOLDS(1)**

At current prices, NIS million		2000-2020			במחירים שוטפים, מיליוני ש"ח
	עסקים Businesses	ממשלה ומלכ"רים פרטיים Government and private NPIs	קופות חולים Health maintenance organizations	סך הכל Total	
2000	1,468	268	1,466	3,202	2000
2001	1,586	298	1,684	3,568	2001
2002	1,529	375	1,916	3,820	2002
2003	1,129	536	2,089	3,754	2003
2004	919	532	2,310	3,761	2004
2005	1,429	557	2,497	4,483	2005
2006	1,421	570	2,489	4,480	2006
2007	1,889	594	2,569	5,052	2007
2008	2,101	605	2,439	5,145	2008
2009	2,431	637	2,349	5,417	2009
2010	2,430	652	2,464	5,546	2010
2011	2,673	688	2,491	5,852	2011
2012	2,619	697	2,611	5,927	2012
2013	2,756	735	2,755	6,246	2013
2014	2,690	734	2,820	6,244	2014
2015	2,930	786	2,970	6,686	2015
2016	3,123	819	3,023	6,965	2016
2017	3,424	871	3,114	7,409	2017
2018	3,694	928	3,270	7,892	2018
2019	3,964	983	3,410	8,357	2019
2020*	4,753	1,093	3,450	9,296	*2020

(1) Including purchase of medicines in pharmacies,  
 does not include medicines received as part of  
 a medical treatment.

(1) כולל רכישת תרופות בבתי מרקחת,  
 ולא כולל תרופות שמקבלים כחלק מטיפול רפואי.

TABLE 12. CURRENT NATIONAL EXPENDITURE

לוח 12. הוצאה לאומית שוטפת

ON HEALTH, INTERNATIONAL COMPARISON

לבריאות, השוואה בין-לאומית

2010, 2020, 2021

	הוצאה לנפש בדולרים, במונחי כוח הקנייה של התוצר המקומי הגולמי			אחוז מהתוצר המקומי הגולמי	
	Expenditure per capita in \$, in terms of PPP of the Gross Domestic Product			Percentage of the Gross Domestic Product	
	2021	2020	2010	2021	
Austria	6,693	5,883	4,259	12.2	אוסטרייה
Australia	..	5,627	3,593	..	אוסטרליה
Italy	4,038	3,747	3,105	9.5	איטליה
Iceland	5,096	4,620	3,264	9.7	איסלנד
Ireland	5,836	5,373	4,051	6.7	אירלנד
Estonia	2,989	2,729	1,364	7.5	אסטוניה
United States	12,318	11,859	7,879	17.8	ארצות הברית
Belgium	..	5,274	3,909	..	בלגייה
Germany	7,383	6,939	4,423	12.8	גרמניה
Denmark	6,384	5,694	4,272	10.8	דנמרק
Netherlands	..	6,190	4,475	..	הולנד
Hungary	..	2,402	1,666	..	הונגריה
United Kingdom	5,387	5,019	3,442	11.9	הממלכה המאוחדת
Turkey	..	1,305	844	..	טורקיה
Greece	..	2,607	2,486	..	יוון
Japan	..	4,666	3,169	..	יפן
<b>Israel</b>	<b>3,441</b>	<b>3,125</b>	<b>2,047</b>	<b>7.8</b>	<b>ישראל</b>
Luxembourg	..	5,596	5,625	..	לוקסמבורג
Latvia	..	2,202	1,076	..	לטבייה
Lithuania	3,309	2,882	3,172	7.9	ליטא
Mexico	..	1,227	894	..	מקסיקו
Norway	7,065	6,536	4,777	10.1	נורווגיה
New Zealand	..	4,469	3,043	..	ניו זילנד
Slovenia	..	3,498	2,320	..	סלובניה
Slovakia	..	2,134	2,011	..	סלובקיה
Spain	..	3,718	2,738	..	ספרד
Poland	2,568	2,286	1,423	6.6	פולין
Portugal	3,816	3,348	2,580	11.2	פורטוגל
Finland	..	4,566	3,427	..	פינלנד
Chile	2,596	2,413	1,254	9.1	צ'ילה
Czech Republic	..	3,805	2,002	..	צ'כיה
France	..	5,468	4,045	..	צרפת
Colombia	..	1,336	..	..	קולומבייה
South Korea	3,914	3,582	1,878	8.8	קוראה הדרומית
Canada	5,905	5,828	4,156	11.7	קנדה
Sweden	6,262	5,757	3,431	11.4	שוודיה
Switzerland	..	7,179	5,089	..	שווייץ

Source: OECD.

מקור: OECD.