

Media Release

info@cbs.gov.il; www.cbs.gov.il Fax: 02-6521340

[A previous media release on this subject appeared on March 25, 2025](#)

Jerusalem
May 5, 2025

Labour Force Survey Data, March 2025¹

Labour Force Survey during the days of the "Iron Swords" war

The Central Bureau of Statistics continues to conduct regular surveys, as is routine, for information on Israel's population and economy. Labor Force Survey data enable monitoring of the effects of the war on the employment situation and the labor market in Israel. During this time too, we are committed and following international practices to publish existing indicators, as well as to develop and report on innovative indicators and analyzes that are appropriate to the situation. ²

We would like to sincerely thank the thousands of households who responded to this survey and to our dedicated interviewers who ensured the highest quality data collection.

¹ Due to an error in the estimates of persons aged 15 and over for September 2024 – February 2025, all data for those months were recalculated. Cells that were updated in the tables and text are marked with an R.

² Notes on the survey interviews in the first two months of the war (October-November 2023) - in Chapter E below

Written by Merav Pasternak, Director of Labour Sector, tel. 02-6592868,
Nathalia Shenker, Labour Sector, Yelena Unigovsky, Labour Sector.
For explanations and clarifications, please contact the Statistics Information Center,
tel. 02-6592666

In Chapter A, will be presented seasonally adjusted data for March 2025.

In Chapter B, will be presented data for March 2025 (original series).

Some of the data have already been presented in the media release of [April 23, 2025](#).

In Chapter C, will be presented definitions and explanations.

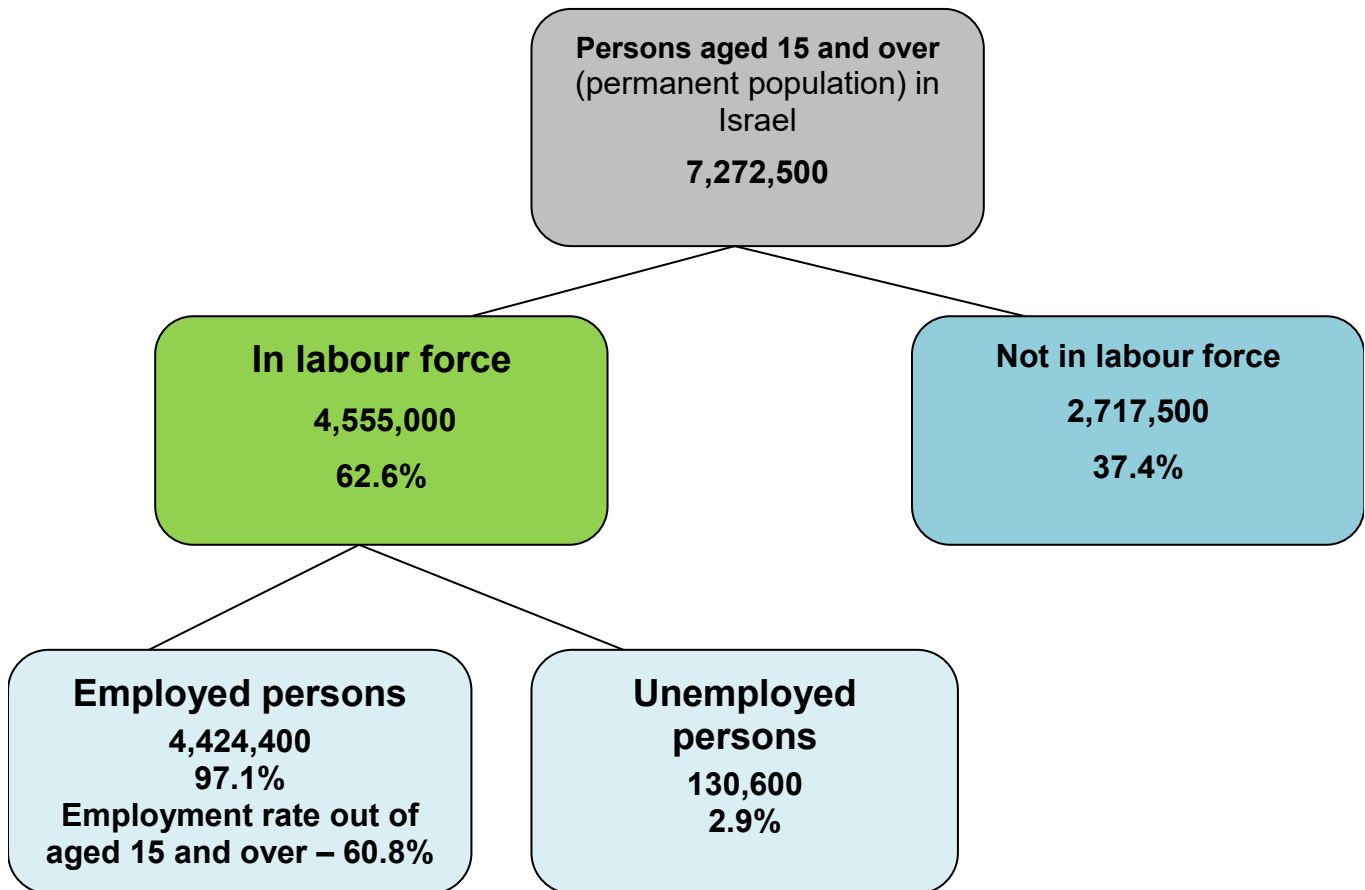
Chapter A - Seasonally adjusted data for March 2025

Seasonally Adjusted Data

In March 2025 (compared with February 2025, among persons aged 15 and over): ([For monthly data 03/2025](#))

- Participation rate in the labour force – 62.6% (62.5% in the previous month).
- Employment rate (the percentage of employed persons out of the total population) 60.8% (60.7% in the previous month).
- Unemployment rate from the labour force - 2.9% (2.8% in the previous month).
- Participation rate in the labour force among persons aged 25-64 – 80.7% (80.6% in the previous month).
- Employment rate among persons aged 25-64 – 78.6% (78.5% in the previous month).
- Unemployment rate among persons aged 25-64 from the labour force - 2.6% (same as in the previous month).
- The share of employed persons usually working full time out of total employed persons – 78.3% (79.0% in the previous month).

**Labour Force Characteristics in March 2025 (compared with February 2025) -
Seasonally Adjusted Data
Persons aged 15 and over**



In March 2025, **the number of persons in the labour force** aged 15 and reached 4.555 million. Among them, 4.424 million were **employed** and approximately 131,000 were **unemployed**. Among the employed persons, 2.276 million were **men** (2.275 million in the previous month) and 2.149 million were **women** (2.138 million in the previous month).

The participation rate among persons aged 15 and over **in the labour force** rose to 62.6% (62.5% in the previous month). Among **men** (see diagram 3), it rose to 65.5% (65.4% in the previous month) and among **women** it rose to 59.9% (59.7% in the previous month).

The unemployment rate among persons aged 15 and over **from the labour force** rose to 2.9% (2.8% in the previous month, see diagram 1). The unemployment rate of **men** (see diagram 2) rose to 2.7% (2.6% in the previous month) and that of **women** reached 3.0% (same as in the previous month).

The **employment rate** (calculated as the percentage of employed persons out of the entire population) among persons aged 15 and rose to 60.8% in March 2025 (60.7% in the previous month). The employment rate among **men** (see diagram 4) reached 63.7% (same as in the previous month) and that of **women** rose to 58.1% (57.9% in the previous month).

DIAGRAM 1. PERCENTAGE OF UNEMPLOYED PERSONS IN LABOUR FORCE

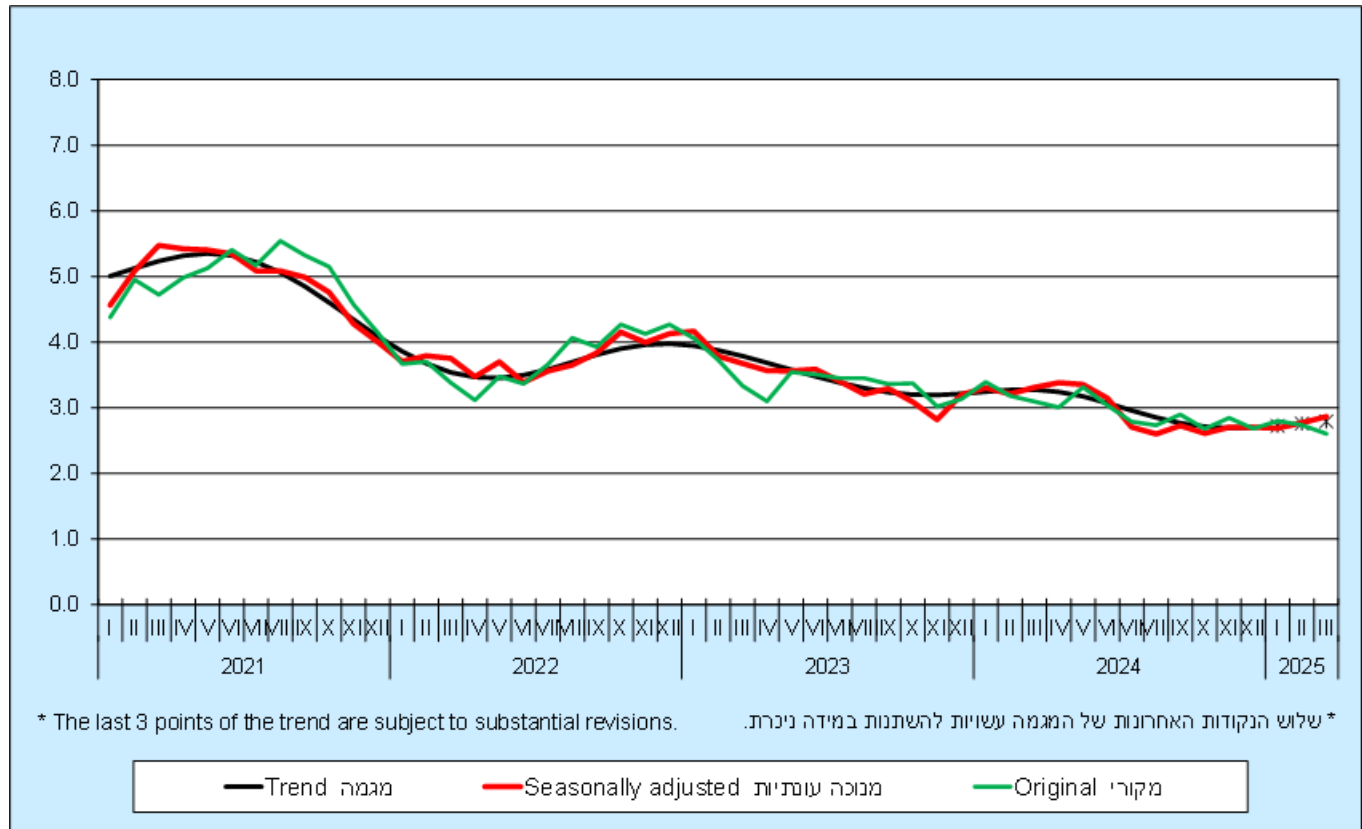


DIAGRAM 2. PERCENTAGE OF UNEMPLOYED PERSONS IN LABOUR FORCE, BY SEX (SEASONALLY ADJUSTED DATA)

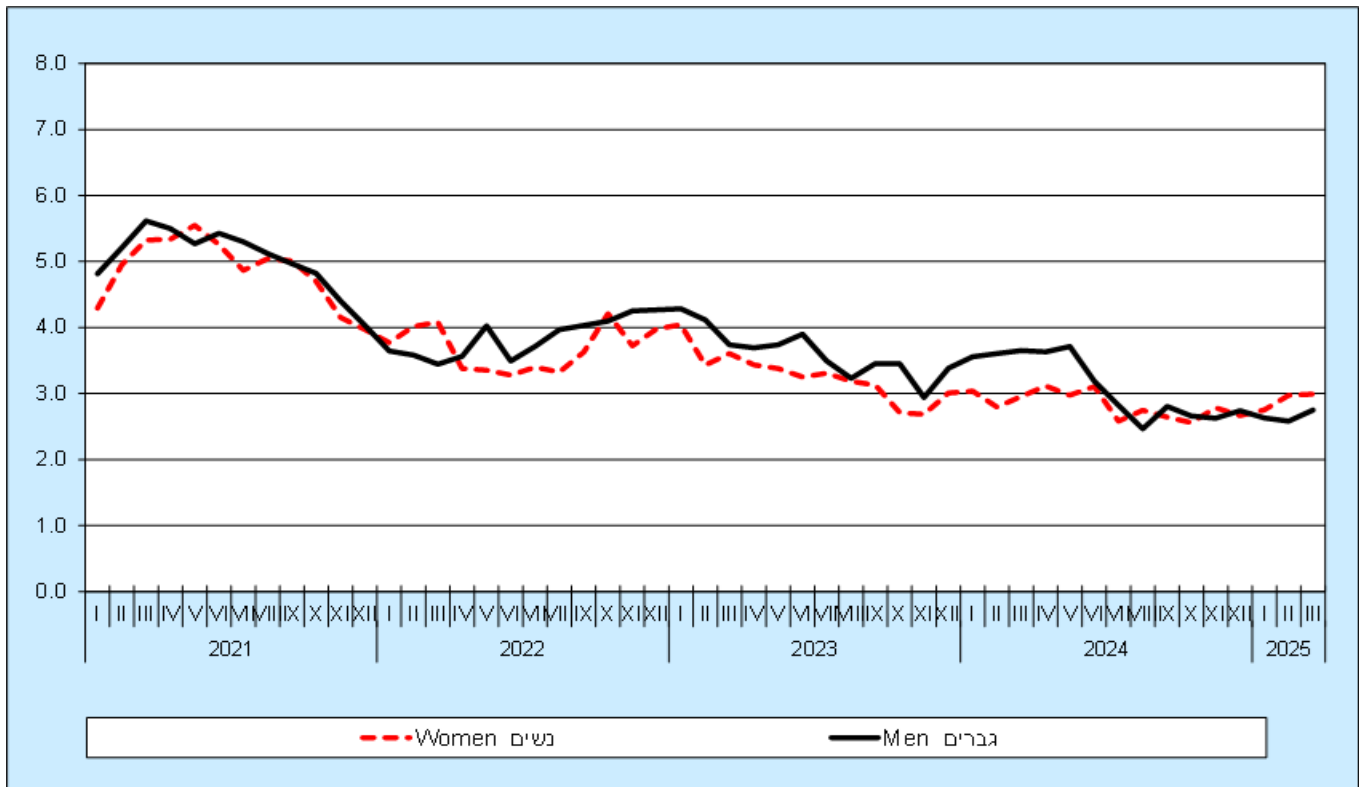


DIAGRAM 3. PERCENTAGE OF THE PARTICIPANTS IN THE LABOUR FORCE, BY SEX (SEASONALLY ADJUSTED DATA)

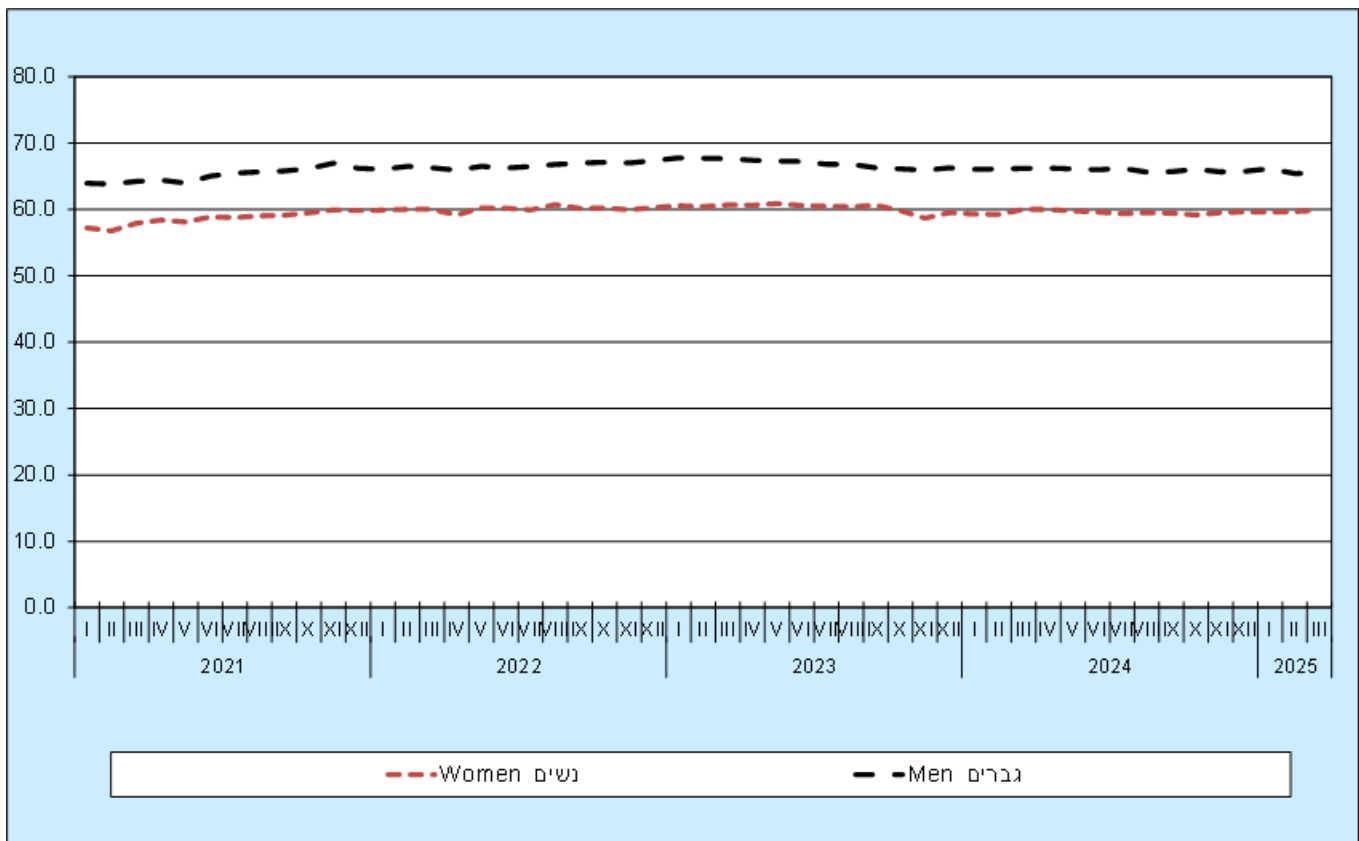


DIAGRAM 4. EMPLOYMENT RATES OF PERSONS AGED 15 AND OVER AND AGED 25-64, BY SEX (SEASONALLY ADJUSTED DATA)

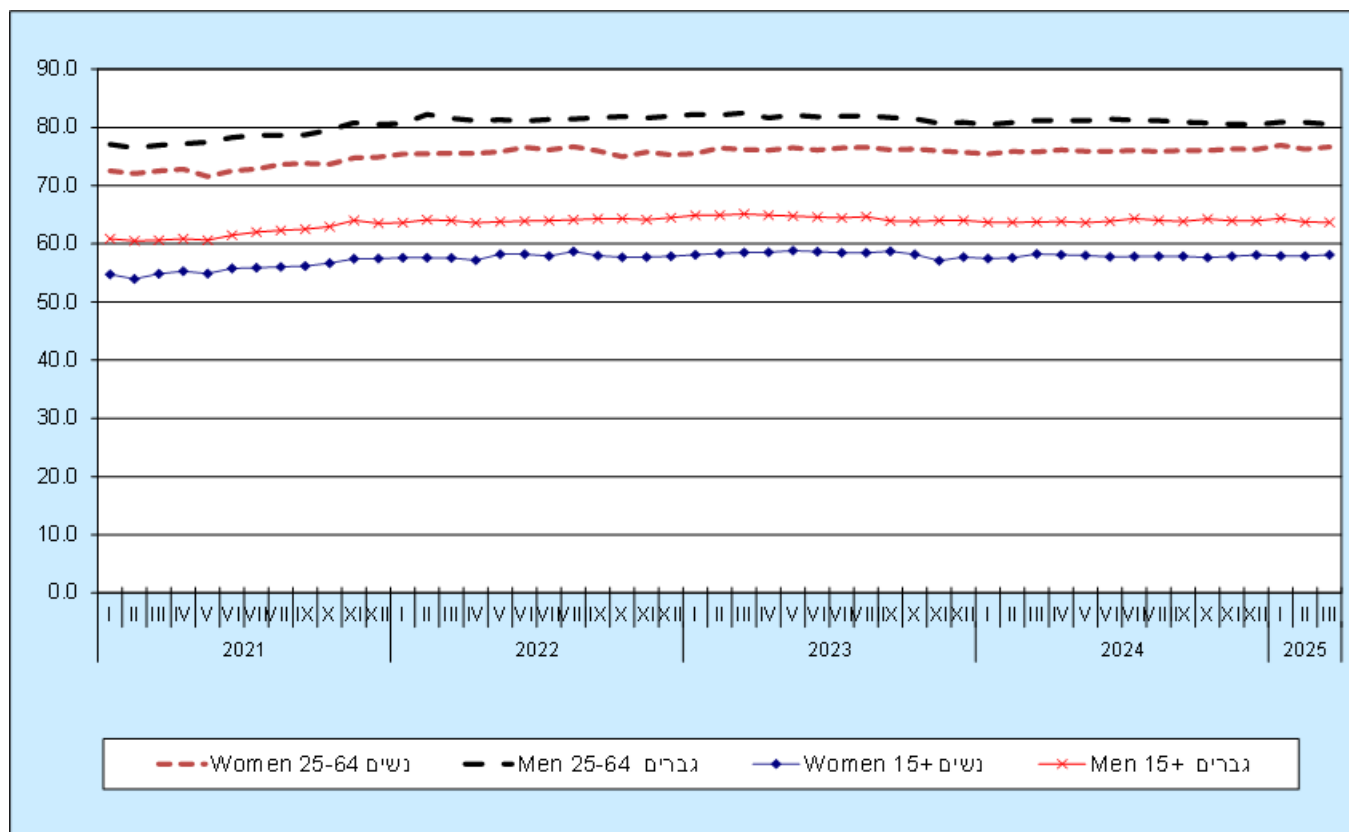


TABLE 1. EMPLOYED PERSONS, BY EXTENT OF WORK IN THE DETERMINANT WEEK (SEASONALLY ADJUSTED DATA)

Thousands	February 2025	March 2025	Difference	Percentage of change	Direction of change compared to the previous month
Employed persons - Total	4,413.2	4,424.4	11.1	0.3	↑
Worked full-time	3,034.5	3,084.5	50.0	1.6	↑
Worked part-time	1,068.7	1,046.1	-22.7	-2.1	↓
Temporarily absent from work (all week)	269.4	325.1	55.7	20.7	↑
Temporarily absent from work part of week	312.0	278.6	-33.5	-10.7	↓

In March 2025, there was an increase in the number of employed persons who **worked full-time** (35 hours and over per week) in the **determinant week** and a decrease in the number of employed persons who **worked part-time** (less than 35 hours) in the **determinant week**, compared to the previous month.

The number of employed persons who were **temporarily absent from work** (all week) has increased, compared to the previous month.

The average weekly number of work hours per employed person declined to 35.3 hours in March 2025 (35.6 in previous month). **The average weekly number of work hours per employee** reached 36.0 hours (same as in the previous month).

The number of employed persons who **usually worked full time** (35 hours and over per week) decreased by 0.4% compared to the previous month. The number of employed persons who **usually worked part time** (less than 35 hours per week) increased by 3.5% compared to the previous month.

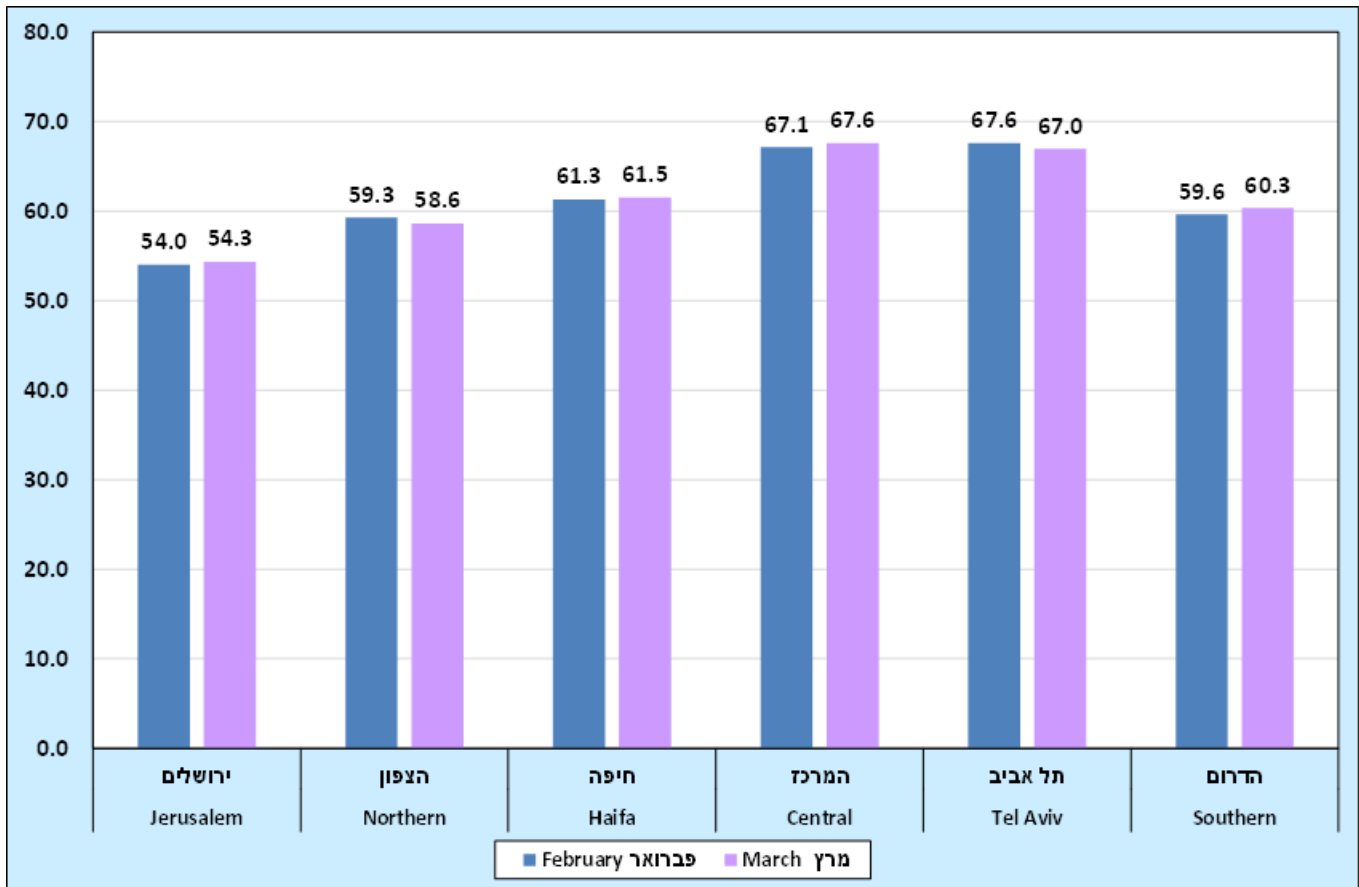
The share of employed persons **usually working full time** out of total employed persons – declined to 78.3% (79.0% in the previous month).

The share of those **usually worked full time** of all employed persons among **men** declined to 86.3% (86.7% in the previous month), and among **women** it declined to 69.9% (70.7% in the previous month). (Detailed figures can be found in Tables 1.24-1.26 in the "[Labour Force Survey Monthly Data](#)" on the website).

Labour Force Characteristics by District of Residence

(Detailed figures can be found in Tables 1.11-1.16 in the "[Labour Force Survey Monthly Data](#)" on the website).

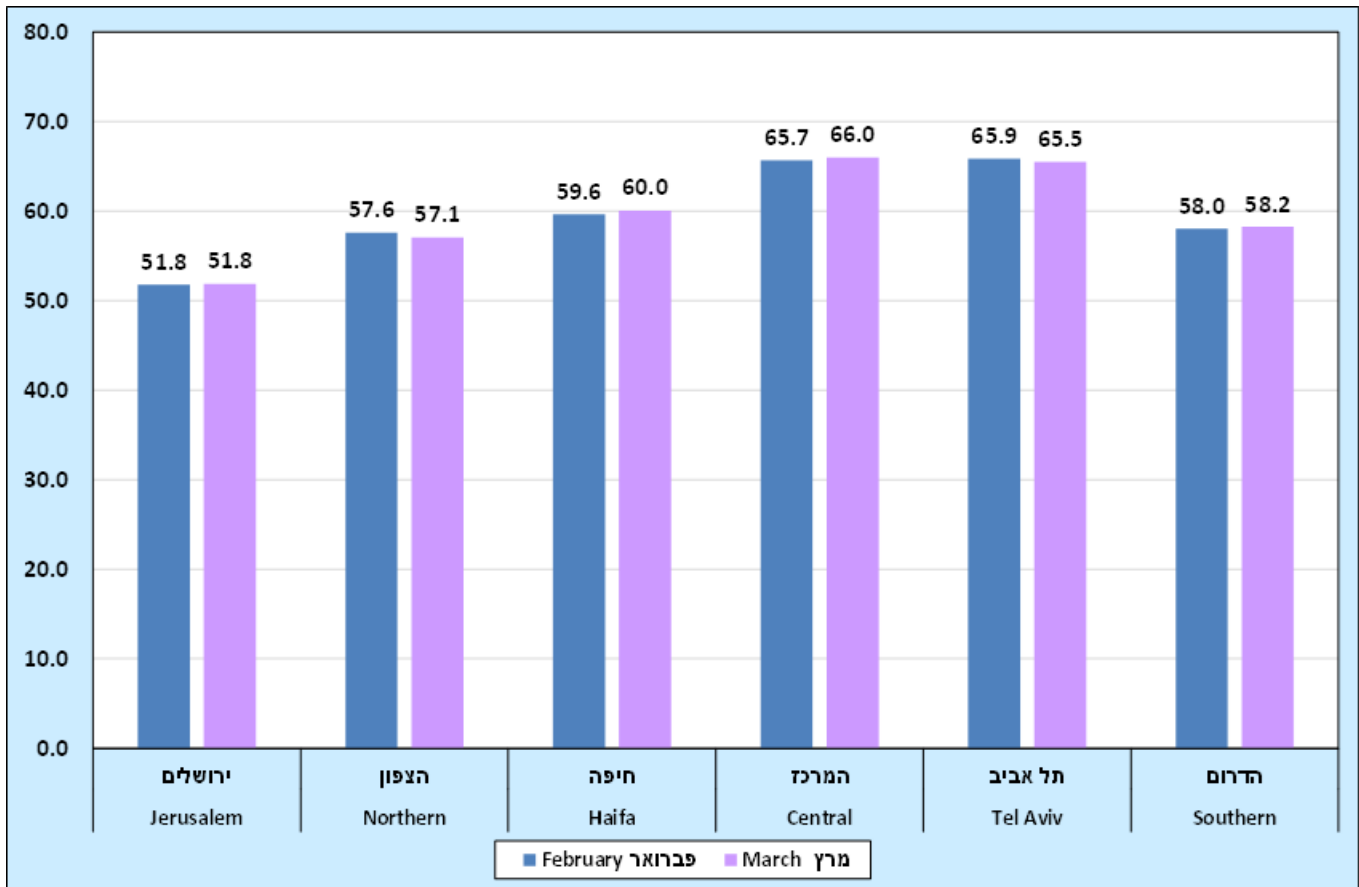
DIAGRAM 5. PERCENTAGE OF THE PARTICIPANTS IN THE LABOUR FORCE BY DISTRICT OF RESIDENCE (SEASONALLY ADJUSTED DATA)



In March 2025, the highest **participation rate in the labor force** among those aged 15 and over was in **Central district-** 67.6% (67.1% in the previous month).

The lowest participation rate was in **Jerusalem district** – 54.3% (54.0% in the previous month).

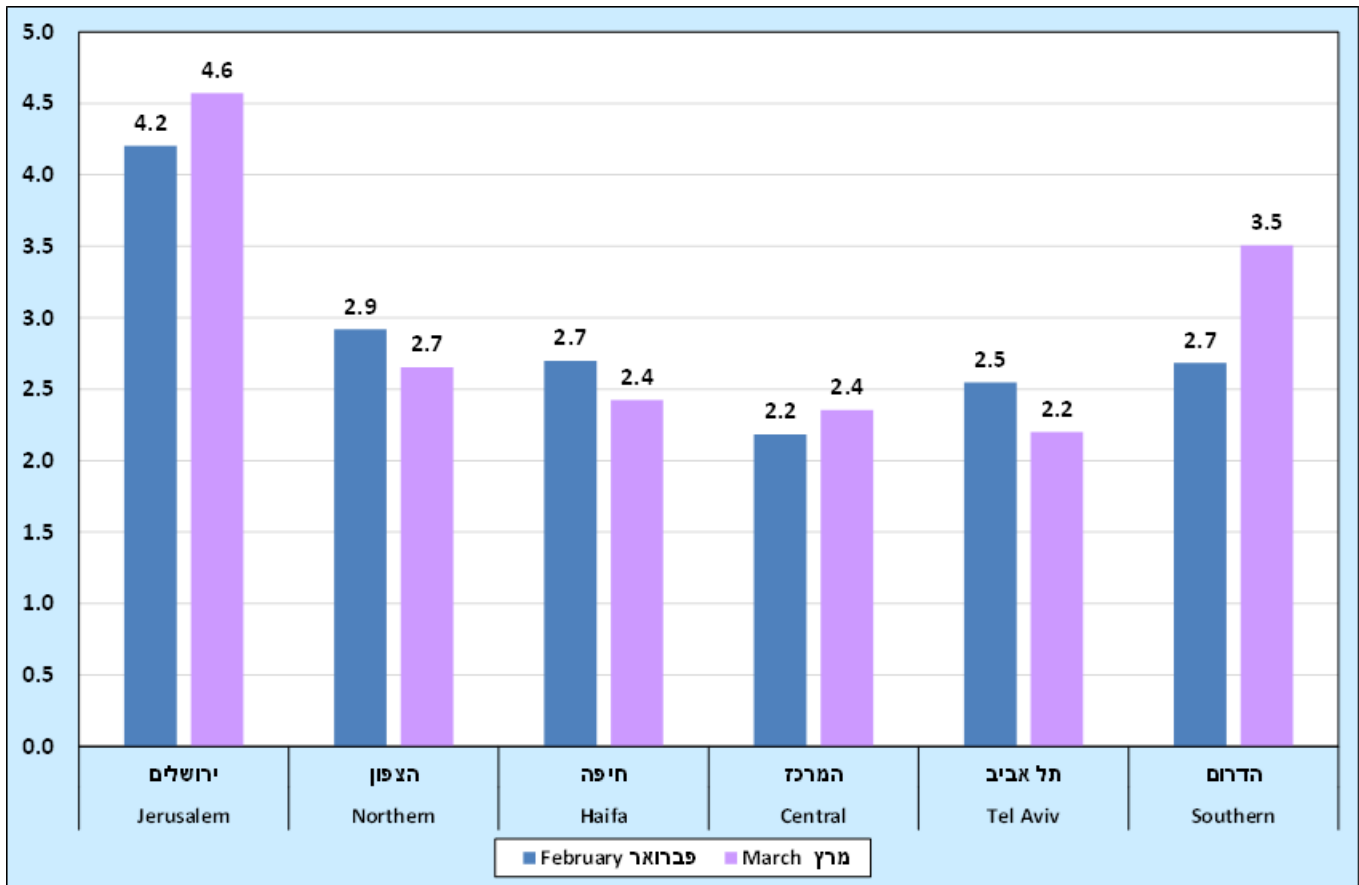
DIAGRAM 6. EMPLOYMENT RATE BY DISTRICT OF RESIDENCE (SEASONALLY ADJUSTED DATA)



In March 2025, the highest **employment rate** among those aged 15 and over was in **Central district** – 66.0% (65.7% in the previous month).

The lowest **employment rate** was in **Jerusalem District** 51.8% (same as in the previous month). In March 2025, there was an increase in employment rate in a half of the districts compared to the previous month.

DIAGRAM 7. PERCENTAGE OF UNEMPLOYED PERSONS IN LABOUR FORCE, BY DISTRICT OF RESIDENCE (SEASONALLY ADJUSTED DATA)



In March 2025, the highest **unemployment rate** among those aged 15 and over was in **Jerusalem district** – 4.6% (4.2% in the previous month).

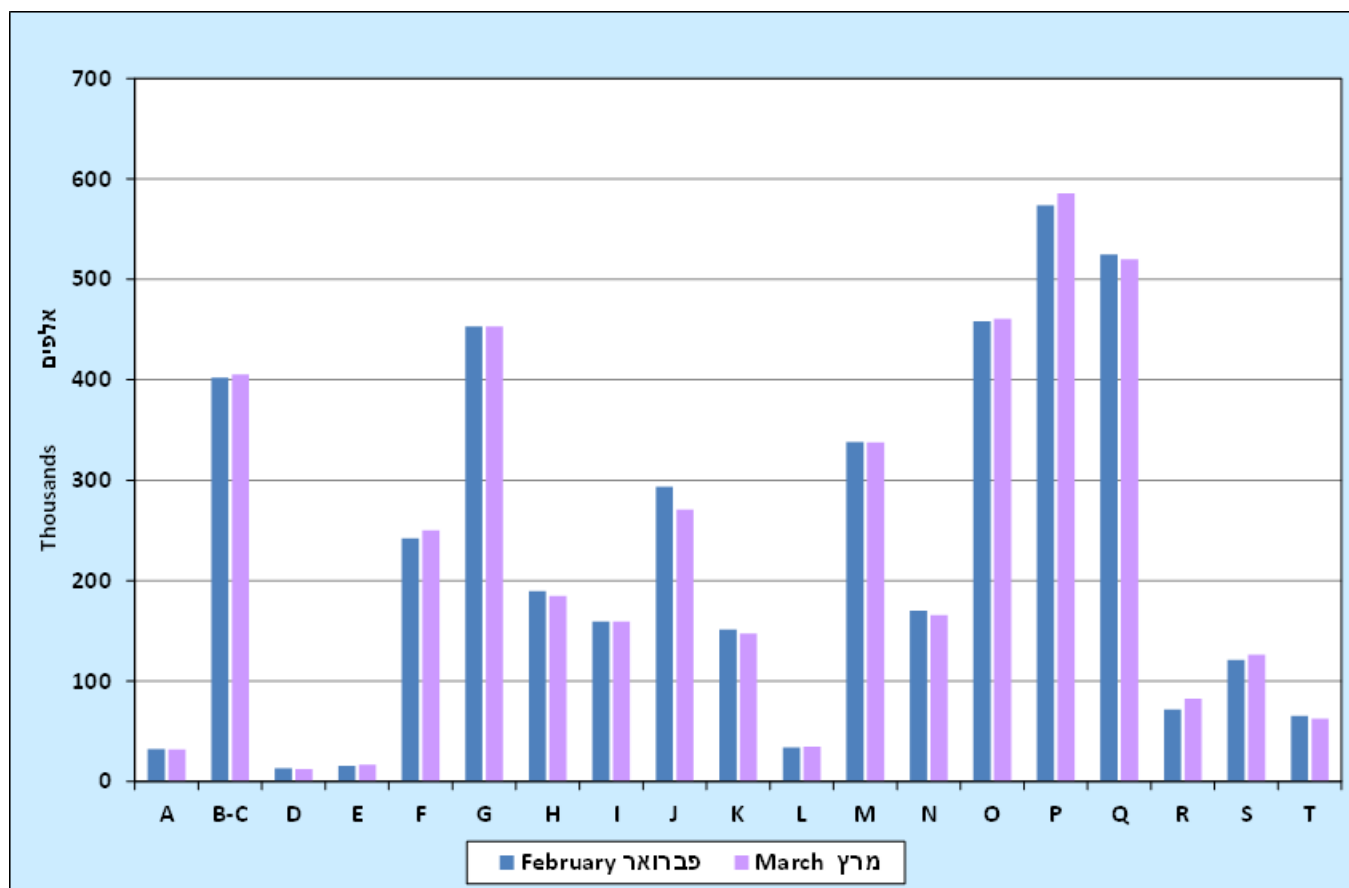
The lowest unemployment rate was in **Tel Aviv district** -2.2% (2.5% in the previous month). In March 2025, there was an increase in unemployment rate in a half of the districts compared to the previous month.

Employed Persons by Industry ([By the new classification of All Economic Activities \(Updated edition\), Technical Publication no. 80](#))

(Detailed figures can be found in Tables 2.1.2 and 2.5.2 in the "[Labour Force Survey Monthly Data](#)" on the website).

In March 2025 the number of **employed persons** increased by approximately 11,000 compared to the previous month and reached 4.424 million. The number of **employees** in March 2025 rose to 3.855 million (3.854 million in the previous month).

DIAGRAM 8. EMPLOYED PERSONS, BY INDUSTRY (SEASONALLY ADJUSTED DATA)



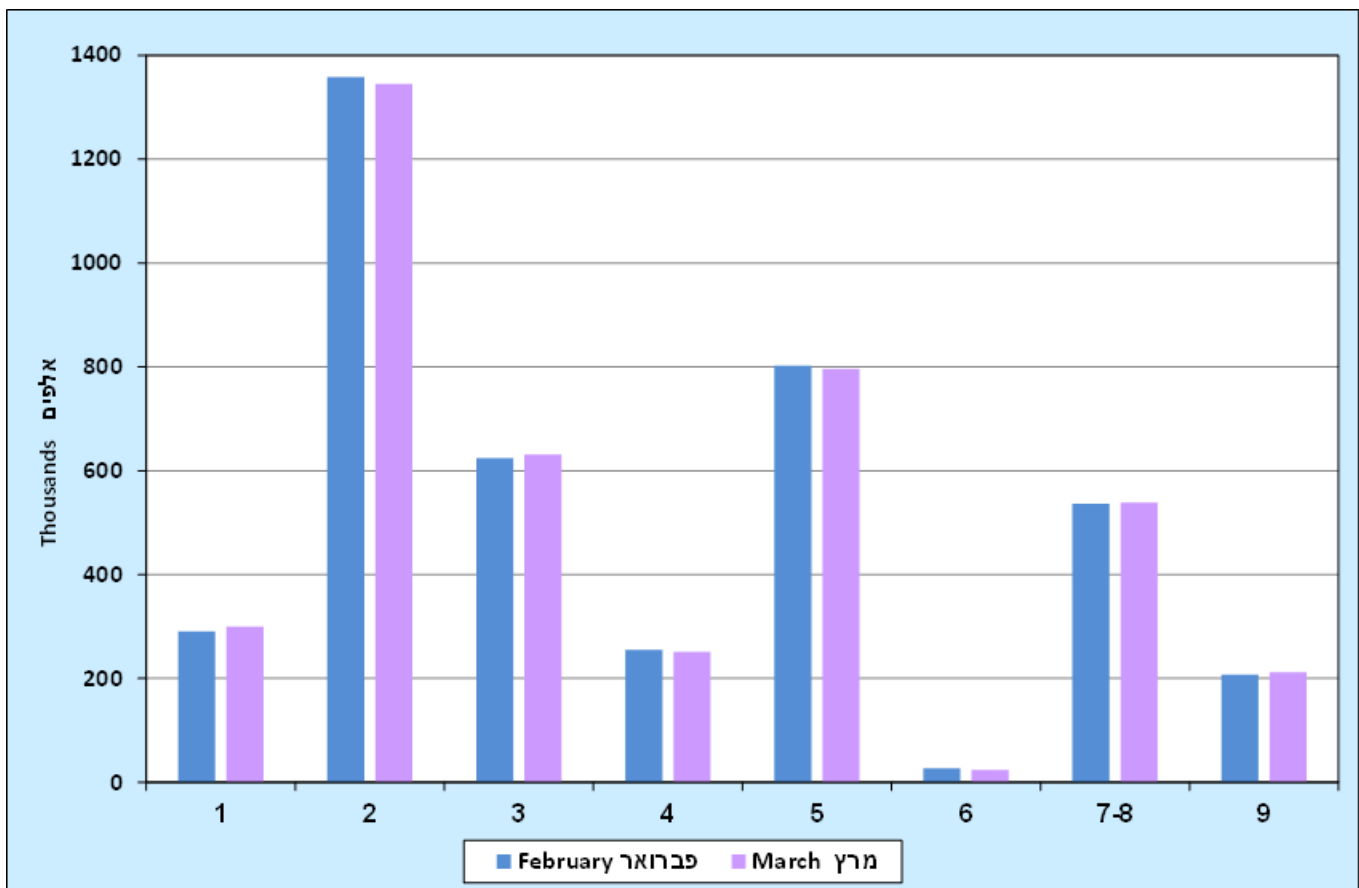
Code	Industry
A	Agriculture, forestry and fishing
B-C	Manufacturing; Mining and quarrying
D	Electricity supply
E	Water supply, sewerage and waste management
F	Construction
G	Wholesale and retail trade and repair of motor vehicles
H	Transportation, storage, postal and courier activities
I	Accommodation and food service activities
J	Information and communications
K	Financial and insurance activities
L	Real estate activities
M	Professional, scientific and technical activities
N	Administrative and support service activities
O	Local, public and defence administration and social security
P	Education
Q	Human health and social work activities
R	Arts, entertainment and recreation
S	Other service activities
T	Households as employers

Among employed persons, the **greatest increase** was in the industry: **Education** (approximately 12,000 employed persons).

The **greatest decrease** was in the industry: **Information and communications** (approximately 23,000 employed persons).

Employed Persons by Occupation ([By the new classification of Occupations, Technical Publication no. 81](#)) (Detailed figures can be found in Tables 2.10.2 and 2.14.2 in the "[Labour Force Survey Monthly Data](#)" on the website).

DIAGRAM 9. EMPLOYED PERSONS, BY OCCUPATION (SEASONALLY ADJUSTED DATA)



Code	Occupation
1	Managers
2	Professionals
3	Practical engineers, technicians, agents, and associate professionals
4	Clerical support workers
5	Service and sales workers
6	Skilled agricultural, forestry and fishery workers
7-8	Skilled workers in manufacturing and construction, and other skilled workers
9	Elementary occupations

Among employed persons, the greatest **increase** was in **Managers** (approximately 9,000 employed persons).

The greatest **decrease** was among **Professionals** (approximately 13,000 employed persons).

Employees in the high-tech - The number of employees in the **high-tech sector** declined in March 2025 approximately to 428,000 (approximately 449,000 in the previous month). The share of employees in the high-tech of all employees declined to in March 2025 11.1% (11.6% in the previous month). (Detailed figures can be found in Tables 2.18 in the "[Labour Force Survey Monthly Data](#)" on the website).

Persons aged 25-64

(Detailed figures can be found in Tables 1.20-1.22 in the "[Labour Force Survey Monthly Data](#)" on the website)

Among persons aged 25-64 **the participation rate in the labour force** rose to 80.7% in March 2025 (80.6% in the previous month). Among **men** the rate declined to 82.6% (82.9% in the previous month) and among **women** the rate rose to 78.8% (78.4% in the previous month).

Among persons aged 25-64 **the unemployment rate from the labour force** reached 2.6% (same as in the previous month). Among **men** the unemployment rate rose to 2.5% (2.4% in the previous month), and among **women** the unemployment rate rose to 2.8% (2.7% in the previous month).

The employment rate among persons aged 25-64 rose to 78.6% (78.5% in the previous month). Among **men** the employment rate declined to 80.6% (80.9% in the previous month) and among **women** the employment rate rose to 76.6% (76.2% in the previous month).

Chapter B - Original data for March 2025

Original Data

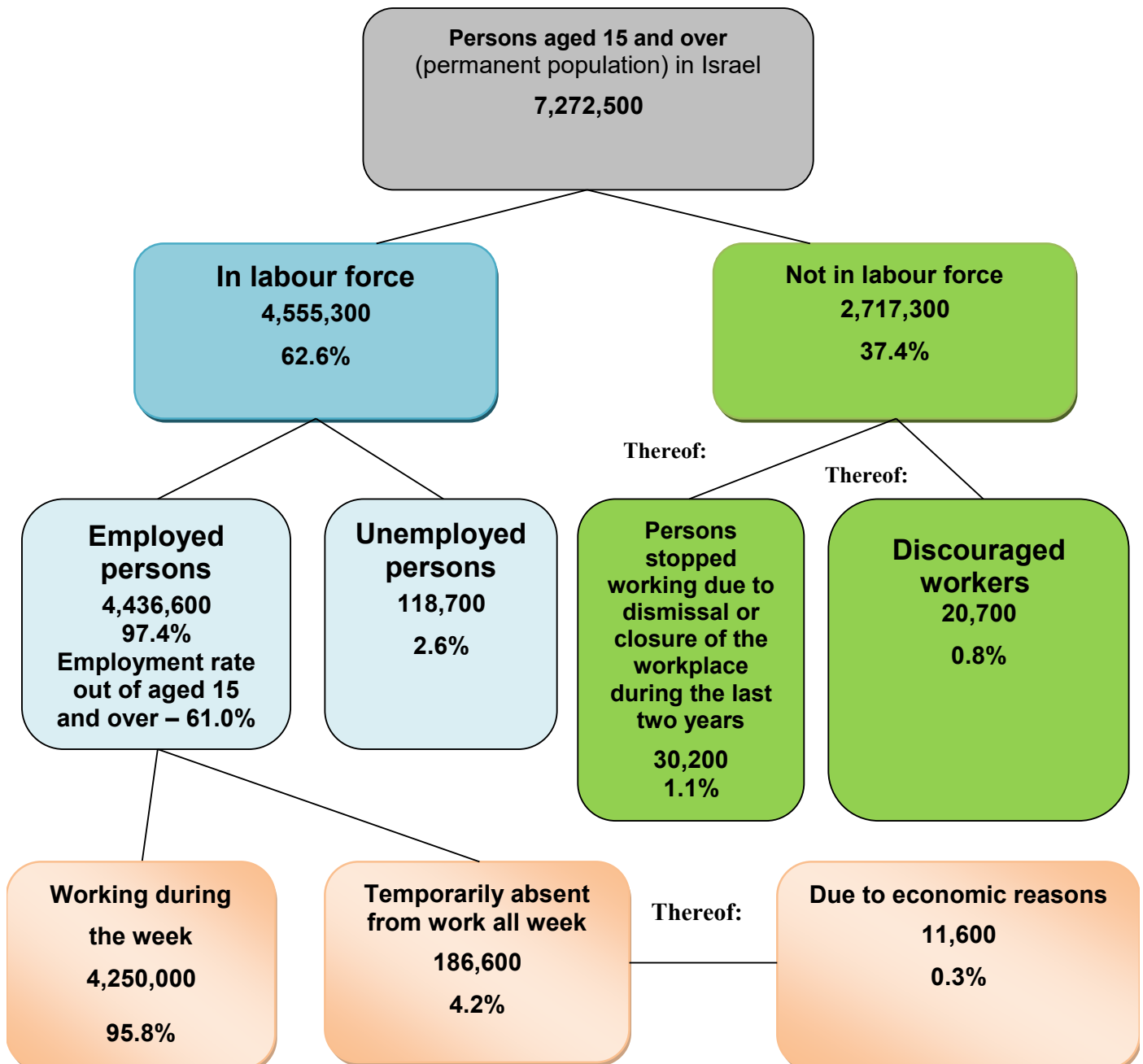
In March 2025 (compared with February 2025, among persons aged 15 and over): ([For monthly data 03/2025](#))

- Participation rate in the labour force – 62.6% (62.5%R in the previous month).
- Employment rate (the percentage of employed persons out of the total population) – 61.0% (60.8%R in the previous month).
- Unemployment rate from the labour force – 2.6% (2.7% in the previous month).
- Employment rate excluding persons temporarily absent from work all week due to economic reasons – 60.8% (60.6%R in the previous month).
- Percentage of persons temporarily absent from work all week according to selected reasons: economic reasons – 6.2% (6.4% in the previous month), reserves – 10.5% (12.2%R in the previous month), other – 0.1% (1.6%R in the previous month).
- Percentage of men temporarily absent from work all week according to selected reasons: economic reasons – 9.2% (8.5% in the previous month), reserves – 21.0% (23.2%R in the previous month), other – there were none of these (1.4%R in the previous month).
- Percentage of women temporarily absent from work all week according to selected reasons: economic reasons – 4.0% (4.9% in the previous month), reserves – 2.7% (4.2%R in the previous month), other – 0.1% (1.7% in the previous month).
- A file on [Tracking Government Employment Targets](#) can be seen on the CBS website. (Hebrew only)

Number and percentage in labour force	February 2025	March 2025
Unemployed persons	124,300R 2.7%	118,700 2.6%
Employed persons temporarily absent from work all week due to economic reasons + unemployed persons	134,600R 3.0%	130,300 2.9%
Persons not in the labour force who stopped working due to dismissal or closure of the workplace during the last two years + employed persons temporarily absent from work all week due to economic reasons + unemployed persons	167,800R 3.7%	160,500 3.5%
Discouraged workers + persons not in the labour force who stopped working due to dismissal or closure of the workplace during the last two years + employed persons temporarily absent from work all week due to economic reasons + unemployed persons	187,700R 4.1%	178,400 3.9%

Labour Force Characteristics in March 2025 (compared with February 2025) - Original Data³

Persons aged 15 and over



³ Among Discouraged workers, there are 2,800 people who stopped working due to dismissal during the last two years

TABLE 2. EMPLOYED PERSONS, BY EXTENT OF WORK IN THE DETERMINANT WEEK (ORIGINAL DATA)

Thousands	February 2025	March 2025	Difference	Percentage of change	Direction of change compared to the previous month
Employed persons - Total	4,413.5 R	4,436.6	23.1	0.5	↑
Working during the week	4,249.1 R	4,250.0	0.9	0.0	↑
Worked full-time	3,298.3 R	3,244.2	-54.0	-1.6	↓
Worked part-time	950.8 R	1,005.8	54.9	5.8	↑
Temporarily absent from work (all week)	164.4 R	186.6	22.2	13.5	↑
Thereof: due to economic reasons	10.4	11.6	1.2	11.5	↑
Temporarily absent from work (all or part of week)	311.3 R	402.3	91.0	29.2	↑
Thereof: due to economic reasons	23.8 R	29.5	5.7	24.0	↑
Temporarily absent from work part of week	146.9	215.7	68.9	46.9	↑
Thereof: due to economic reasons	13.4 R	17.9	4.5	33.7	↑

In March 2025, there was a decrease in the number of employed persons who **worked full-time** (35 hours or more) in the **determinant week** and an increase in the number of employed persons who **worked part-time** (less than 35 hours) in the **determinant week**, compared to the previous month.

The number of employed persons who were **temporarily absent from work** (all week) increased and the number of those who were **absent from work due to economic reasons** increased, compared to the previous month. (Detailed data can be found in Tables 1.4-1.6 and 1.30-1.32 in the "[Labour Force Survey Monthly Data](#)" on the website).

Percentage of persons temporarily absent from work all week according to selected reasons: economic reasons – 6.2% (6.4% in the previous month), reserves – 10.5% (12.2%R in the previous month), other – 0.1% (1.6%R in the previous month).

Percentage of men temporarily absent from work all week according to selected reasons: economic reasons – 9.2% (8.5% in the previous month), reserves – 21.0% (23.2%R in the previous month), other – there were none of these (1.4%R in the previous month).

Percentage of women temporarily absent from work all week according to selected reasons: economic reasons – 4.0% (4.9% in the previous month), reserves – 2.7% (4.2%R in the previous month), other – 0.1% (1.7% in the previous month).

(Detailed data on persons temporarily absent from work all week or part of the week by reason for absence and sex appear in table 8 attached to this media release).

The number of **employed persons excluding temporarily absent from work all week due to economic reasons** increased by 0.5% compared to the previous month (an addition approximately of 22,000 employed). The **employment rate excluding temporarily absent from work all week due to economic reasons** of total persons aged 15 and over rose to 60.8% in March 2025 (60.6%R in the previous month).

The **unemployment rate** in March 2025 declined to 2.6% (2.7% in the previous month).

Among the unemployed persons in March 2025, there were approximately 86,000 who stopped working at their last workplace during the last two years (approximately 89,000 in the previous month). Of them: approximately 11,000 worked in **Education**. (Detailed data on the unemployed persons according to the last economic activity and gender, is presented in table 14 attached to this media release).

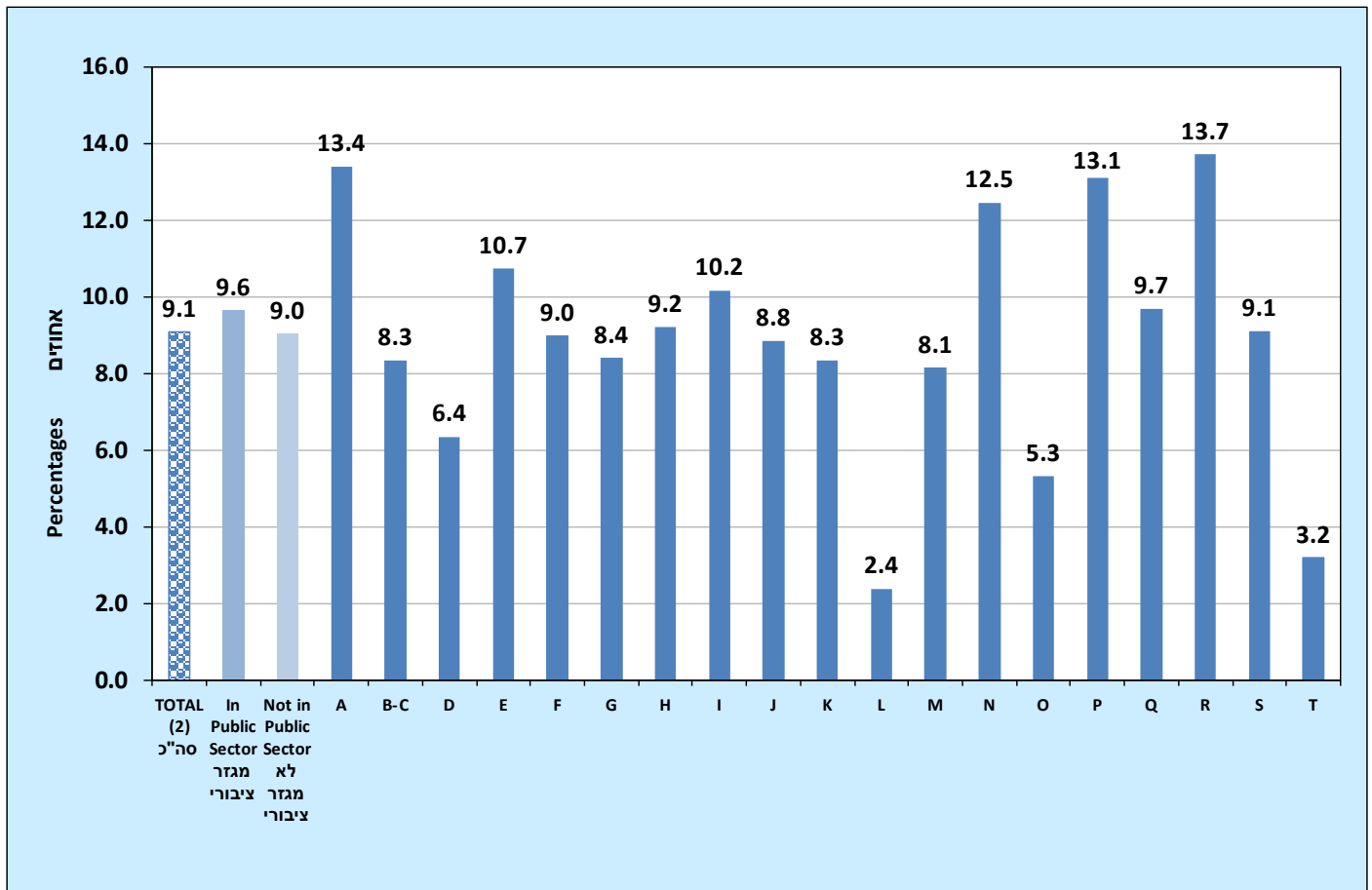
The number of persons **not in the labour force who stopped working due to dismissal or closure of the workplace during the last two years** declined approximately to 30,000 in March 2025 (approximately 33,000 persons in the previous month). (Detailed data on the unemployed persons and those not in labor force according to the reason for their last place of work stoppage is presented in table 13 attached to this media release).

The number of **discouraged workers** in March 2025 rose approximately to 21,000 (20,000R in the previous month).

Employed persons temporarily absent from work all or part of week by industry and occupation, [Original data \(By the new classification of All Economic Activities \(Updated edition\), Technical Publication no. 80\) \(By the new Classification of Occupations, Technical Publication no. 81\)](#)

Table 1 attached to this media release presents the data for employed persons and employees temporarily absent from work all of the week or part of it by industry and occupation in March 2024 and February and March 2025.

DIAGRAM 10. EMPLOYED PERSONS TEMPORARILY ABSENT FROM WORK ALL THE WEEK OR PART OF THE WEEK OF TOTAL EMPLOYED PERSONS, BY INDUSTRY (1) (ORIGINAL DATA)



- (1) Excl. persons living outside localities (Bedouins in the South) or in institutions (permanent samples).
- (2) Incl. employed persons in the industry "Extra-Territorial Organizations and Bodies" (Category U), and employed persons whose industry is not known.

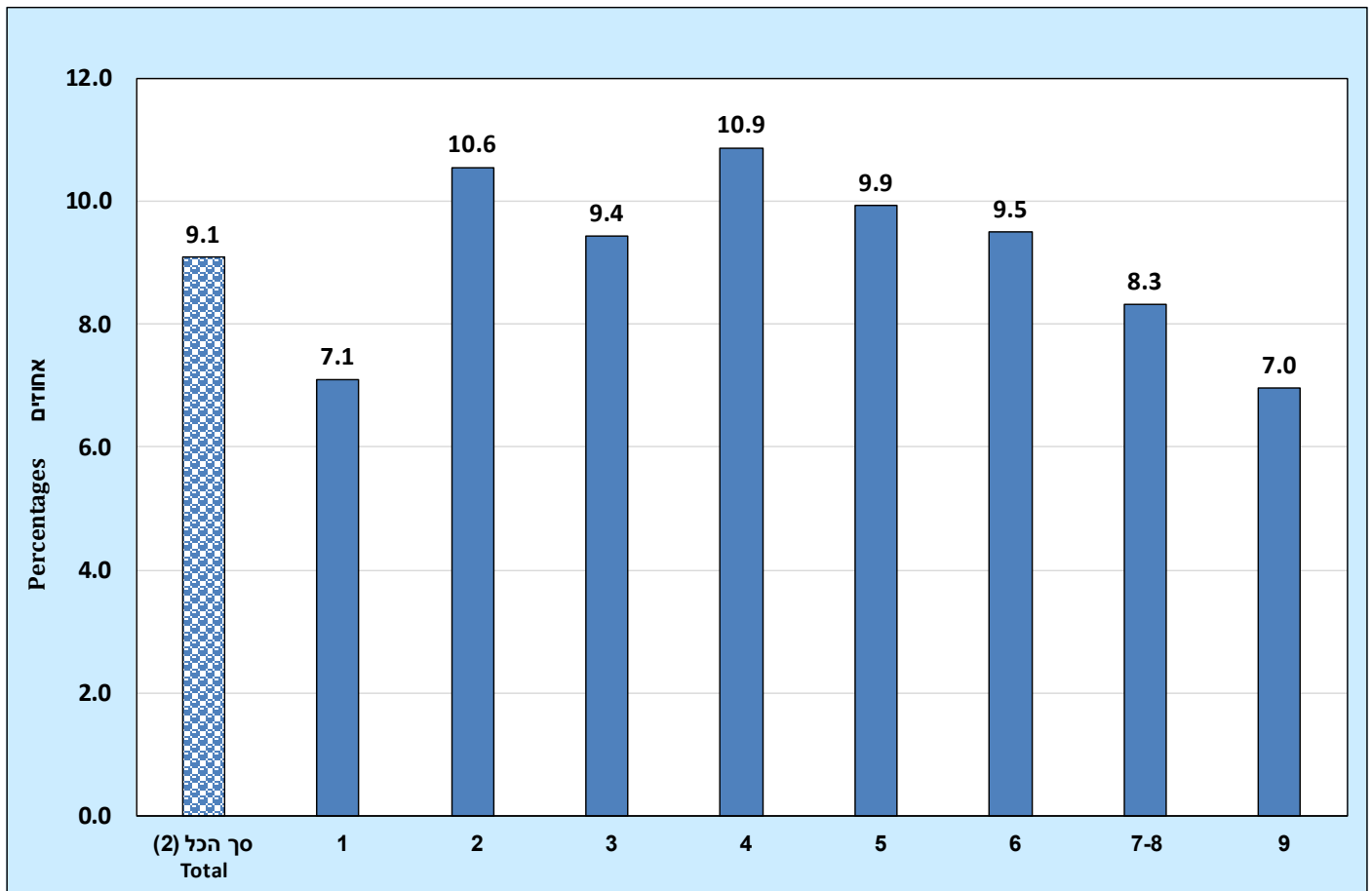
Code	Industry
A	Agriculture, forestry and fishing
B-C	Manufacturing; Mining and quarrying
D	Electricity supply
E	Water supply, sewerage and waste management
F	Construction
G	Wholesale and retail trade and repair of motor vehicles
H	Transportation, storage, postal and courier activities
I	Accommodation and food service activities
J	Information and communications
K	Financial and insurance activities
L	Real estate activities
M	Professional, scientific and technical activities
N	Administrative and support service activities
O	Local, public and defence; administration and social security
P	Education
Q	Human health and social work activities
R	Arts, entertainment and recreation
S	Other service activities
T	Households as employers

The share of employed persons **temporarily absent from work all the week or part of the week** rose to 9.1% in March 2025 (7.1% in the previous month).

This share is high among **employed persons in the public sector** (by industry definition) compared to **employed persons not in the public sector** (by industry definition) 9.6% and 9.0% respectively (in the previous month: 6.5%, 7.4% respectively).

The greatest share of employed persons who were **temporarily absent from work all or part of the week**, out of all employed persons was in **Arts, entertainment and recreation** (13.7%).

DIAGRAM 11. EMPLOYED PERSONS TEMPORARILY ABSENT FROM WORK ALL THE WEEK OR PART OF THE WEEK OF TOTAL EMPLOYED PERSONS, BY OCCUPATION (1) (ORIGINAL DATA)



(1) Excl. persons living outside localities (Bedouins in the South) or in institutions (permanent samples).

(2) Incl. employed persons whose occupation is not known.

Code	Occupation
1	Managers
2	Professionals
3	Practical engineers, technicians, agents, and associate professionals
4	Clerical support workers
5	Service and sales workers
6	Skilled agricultural, forestry and fishery workers
7-8	Skilled workers in manufacturing and construction, and other skilled workers
9	Elementary occupations

The greatest share of employed persons who were **temporarily absent from work all or part of the week**, out of all employed persons were in **Clerical support workers** (10.9%).

19.7% of the employed persons **worked from home/remotely**⁴ during the determining week. The average working hours per week from home/remotely for an employed person was 23.3 (19.0% of the employed persons worked from home/remotely in the determining week and the average working hours per week from home/remotely for an employed person was 23.8, in the previous month).

The greatest share of employed persons **working from home/remotely** out of all employed persons was in **Information and communications** (64.2%).

The greatest share of employed persons **working from home/remotely** out of all employed persons was in **Professionals** (35.0%). (Detailed data on employed persons and employees working from home/remotely can be found in table 7 attached to this media release).

Persons absent from work and unemployed persons by Age groups and Sex - original data

Table 2 attached to this media release presents the data for employed persons temporarily absent from work during all of the week or part of it by age groups and sex in March 2024 and February and March 2025. Table 6 presents unemployment rate by age and sex.

The greatest **unemployment rate** in labour force was in the following age groups: **aged 15-17** – 4.2%.

The greatest share of employed persons **temporarily absent from work all or part of week** out of all employed persons was among persons in following age groups: **aged 30-34** – 11.7%.

⁴Starting in January 2024, the respondents are asked whether they worked last week from home or remotely. Until December 2023, they were asked whether they worked last week from home.

Employees working part time involuntarily - original data

The number of **employees working part time involuntarily**⁵ rose approximately to 39,000 in March 2025 (approximately 29,000R in the previous month), and their share out of all employed persons rose to 0.9% (0.7% in the previous month). (Detailed figures can be found in Table 2.9 in the "[Labour Force Survey Monthly Data](#)" on the website).

Employees in the high-tech sector - original data

The number of employees in the **high-tech sector** declined to 433,000 in March 2025 (448,000 in the previous month). The share of employees in the high-tech sector of all employees declined to 11.2% in March 2025 (11.6% in the previous month). (Detailed figures can be found in Table 2.18 in the "[Labour Force Survey Monthly Data](#)" on the website).

Chapter C - Definitions and Methodological Explanations

The Labour Force Survey is the main source of information regarding the labour force in Israel, and is conducted by the Central Bureau of Statistics on an ongoing basis. The survey follows the development of the labour force in Israel, its size and characteristics, the extent of unemployment, etc.

Starting from the beginning of 2025, an average of approximately 18,100 persons aged 15 and over a month has been interviewed on an ongoing basis. In March 2025, approximately 18,500 persons aged 15 and over have been interviewed. The response rate in March 2025 rose to 73.7% (71.8% in the previous month).

In October 2024, changes were made to the process of calculating the weighting coefficients in the survey. Each month, correction factors are calculated for each geographic group separately for those dwellings removed from the sampling frame of new construction. This is done to compensate for the lag in updating these dwellings in the sample of new dwellings. Occasionally, correction factors are required for other groups in the sample when specific problems arise in the enumeration, such as problems interviewing in a specific area. Since the transition to a monthly labor force survey, a spot correction was only carried out in March-April 2020 at the beginning of the Corona crisis, due to the difficulties in collecting data. In October 2024, which included

⁵ Those usually working less than 35 hours per week (not including employees, owners of LTD companies), who are interested in working more than 35 hours and actively sought to work more hours in the last four weeks.

holidays, high volatility was observed in the response rates in conjunction with a change in the characteristics of the labor force in the various weeks, and therefore the process of calculating a special correction coefficient was again activated. The special correction coefficient is intended to balance the distribution of respondents between the weeks. At this stage, the initial weighting coefficient for all persons in a household in the current sample is obtained by multiplying the appropriate correction factors.

In October 2023: no interviews were conducted at all on the days 8.10.23 - 15.10.23. As of 16.10.23, a gradual return began while being sensitive to the situation of the households during this period. Almost all survey interviews, 99.5% (compared to 92.3% in October) were conducted by the telephone and not on sampled houses as they are normally conducted. Also, due to the horrible events, samples living in the southern localities up to 7 km from the Gaza Strip (including Ofakim) were not interviewed.

In November 2023: samples living in the southern localities up to 7 km from the Gaza Strip (excluding Sderot) were not interviewed. 94.7% of the survey interviews were conducted by the telephone.

As of September 22, 2024, the interviews in some localities in the North and Haifa districts were conducted Only by phone.

As of December 1, 2024, the interviews in the north of the Golan and in the settlements of the conflict line were conducted only by phone. In the rest of the North and Haifa districts, the interviews were conducted as usual.

As of January 5, 2025, the interviews throughout the country were conducted as usual.

The survey population includes the permanent population of Israel, as well as tourists and temporary residents living in Israel continuously for more than one year.

The definitions of groups relevant to this Media Release are as follows:

1. **Unemployed persons:** Persons aged 15 and over who did not work at all during the determinant week (even for one hour) and do not have work from which they were absent the entire determinant week, who actively sought work during the four weeks preceding the interview and were available to work during the determinant week.
2. **Employed persons temporarily absent from work due to economic reasons:** Employed persons aged 15 and over who were temporarily absent from work all week due to reduced workload or work stoppage (including those temporarily absent due to unpaid

leave or reduced business activity due to the war). Absent due to the war at the beginning of October (weeks 1-2) were usually included in "other" as the reason for absence.

3. **Non-participants in the labour force who stopped working due to dismissal or closure of the workplace during the last two years:** Persons aged 15 and over who did not work in the determinant week, and do not have work from which they were absent the entire determinant week and did not actively seek work during the four weeks preceding the interview and were dismissed from their work during the last two years.
4. **Discouraged workers:** All persons aged 15 and over who were not included in the weekly labour force but were interested in working, and could have started working during the determinant week had they been offered suitable work ("available to work") and sought work during the 12 months preceding the survey but not over the last four weeks preceding the survey for the following reasons: they believed there are no appropriate jobs for them in their field or in their area of residence in terms of wages, work hours, or interesting work; lack of appropriate experience or training; language difficulties or inappropriate age (too young or too old).

The percentage of the labour force of the three groups together (1-3) or 4 groups together (1-4)⁶ is calculated from the labour force with the addition of the third or fourth group respectively to the labour force.

5. **Employed persons excluding temporarily absent from work all week due to economic reasons:** Employed persons aged 15 and over excluding those who were temporarily absent from work all week due to economic reasons (see definition in paragraph 2 above).
6. **Employment rate excluding temporarily absent from work all week due to economic reasons:** Calculated as percent of employed persons excluding temporarily absent from work all week due to economic reasons of total persons aged 15 and over.
7. **Public sector by industry definition** includes following industries: Manufacture of other transport equipment (30); Electricity supply (35); Water supply (36); Sewerage (37); Postal activities (5310); Local administration (83); Public administration and defence; and social security (84); Pre-primary education institutions (kindergartens) (850); Primary education institutions (851); Secondary education institutions (lower and upper secondary education) (852); Tertiary-Type B (non-academic) education institutions (853); Academic colleges and extensions of foreign institutions of higher education (854); Universities (855); Hospital

⁶ People who are both in Discouraged workers group and among those who stopped working due to dismissal during the last two years - are counted only once.

activities (861); Public clinics (8620); Health offices, family and community health centers, and disease prevention centers (8623); Libraries, archives and museums activities (91); Community centers (culture, youth and sports centres) (944); Extraterritorial organizations and bodies (99).

8. **High technology sector:** The definition of high technology sector is based on the ["Standard Industrial Classification of All Economic Activities 2011, Technical Publication 80, The Central Bureau of Statistics"](#), as well as on the definitions of OECD and Eurostat (See additional information in publication: ["Development of High-Tech Sector in Israel, 1995-2014"](#)). **Manufacturing in the High-Tech Sector:** Manufacture of pharmaceutical products and homeopathic pharmaceutical preparations (21), Manufacture of computer, electronic and optical products (26), Manufacture of air and spacecraft and related machinery (303). **Knowledge-Intensive Services in the High-Tech Sector:** Telecommunications (61), Computer programming, consultancy and related activities (62), Data processing, hosting and related activities; web portals (631), Research and development centers (720), Research and development in engineering and natural sciences (721).

For more depth, see the Definitions and Explanations (Metadata webpage) on the topic of [Labour Force Survey](#).

Data publishing starting in October 2023:

Due to the unusual changes that occurred in some of the data series as a result of the war, trend data were not calculated starting from October 2023 for the data series "Temporarily absent from work all week - total, men, women". In the coming months, depending on the data obtained, publication of the trend in these series will be considered.

In addition, with the intention of improving the nature of the seasonally adjustments in the temporarily absent series, a new method has been implemented: starting from November 2023, the seasonally adjusted data series "Temporarily absent from work all week (men and women) are obtained according to the indirect method as the sum of the seasonally adjusted data series "Temporarily absent without reserves and economic reasons" and of the original series "Absent due to reserves" and " Absent due to economic reasons".

Finally, there are other bodies that publish data related to labour market statistics (not in the framework of the Labour Force Survey). Detailed definitions for jobseekers in the Employment Service⁷ and claimants for unemployment benefits from the National Insurance Institute⁸ can be seen in the Introduction to Chapter 9 "[The Labour Market](#)" in the [Statistical Abstract of Israel](#). The differences between the data of the various bodies and the data of the CBS are mainly due to significant differences in definitions. The definitions in these bodies are operative for the fulfillment of their functions, while the CBS data are based on definitions of official statistics, in accordance with the function of the CBS. In light of this and to remove all doubt, talks are currently being held between all the bodies regarding the various data, so there will be full coordination and transparency in the data.

* Additional data on this subject are published in the "[Labour Force Survey Monthly Data](#)" and in the file on "[Tracking Government Employment Targets](#)" (Hebrew only) on the [Central Bureau of Statistics website](#).

⁷ [On the Employment Service website \(Hebrew only\)](#).

⁸ [On the National Insurance Institute website](#).

**לוח 1 - מועסקים ושכירים ומהם - הנעדרים זמנית מעבודתם כל השבוע
או חלק מהשבוע, לפי ענף כלכלי ומשלח יד,
נתונים מקוריים (1)
אלפים**

2025 מרץ March 2025		R 2025 פברואר 2025 R February 2025 R		2024 מרץ March 2024		סמל	ענף כלכלי ומשלח יד
מזה: הנעדרים זמנית מעבודתם כל השבוע או חלק מהשבוע		מזה: הנעדרים זמנית מעבודתם כל השבוע או חלק מהשבוע		מזה: הנעדרים זמנית מעבודתם כל השבוע או חלק מהשבוע			
:Thereof Temporarily absent from work all the week or part of the week		:Thereof Temporarily absent from work all the week or part of the week		:Thereof Temporarily absent from work all the week or part of the week			
מזה: הנעדרים זמנית מעבודתם כל השבוע	סה"כ	מזה: הנעדרים זמנית מעבודתם כל השבוע	סה"כ	מזה: הנעדרים זמנית מעבודתם כל השבוע	סה"כ		
Thereof: Temporarily absent from work all the	Total	Thereof: Temporarily absent from work all the	Total	Thereof: Temporarily absent from work all the	Total		
185.6	401.3	163.4	310.3	233.8	602.6		סך הכל (2)
45.4	114.1	47.5	76.5	45.1	143.3		במגזר ציבורי לפי הגדרה ענפית (3)
135.1	280.6	114.0	230.9	182.4	449.8		לא במגזר ציבורי לפי הגדרה ענפית (4)
4.0	4.5	3.3	4.8	3.5	6.2	A	ענף כלכלי
15.0	33.1	13.4	25.9	18.8	55.0	B-C	חקלאות, ייעור ודיג
..	(0.8)	1.3	1.3	(0.7)	1.8	D	תעשייה; כרייה וחציבה
..	2.0	-	1.3	2.3	5.3	E	אספקת חשמל
8.6	22.3	8.9	23.1	16.9	34.2	F	אספקת מים, שירותי ביוב וטיהור
18.5	36.6	11.3	31.7	16.8	45.1	G	וטיפול בפסולת
8.5	17.4	6.0	8.8	13.4	31.6	H	בינוי
7.4	15.6	6.9	16.1	15.0	27.5	I	מסחר סיטוני וקמעוני
12.8	23.8	11.6	20.7	12.7	43.5	J	ותיקון כלי רכב מנועים
4.9	12.4	4.6	14.4	9.0	30.2	K	שירותי תחבורה, אחסנה, דואר
(0.6)	1.0	1.6	3.0	(0.6)	3.1	L	ובלדרות
14.3	27.5	14.4	25.8	23.9	56.0	M	שירותי אירוח ואוכל
10.1	20.2	8.4	14.3	13.5	26.5	N	מידע ותקשורת
9.7	24.3	7.2	17.1	10.3	33.1	O	שירותים פיננסיים ושירותי ביטוח
27.5	76.4	29.8	42.1	31.8	96.0	P	פעילויות בנדל"ן
25.8	51.4	23.8	40.0	23.7	65.1	Q	שירותים מקצועיים, מדעיים
5.5	11.3	3.4	6.2	7.7	12.0	R	וטכניים
6.0	12.2	4.2	9.3	6.1	19.7	S	שירותי ניהול ותמיכה
(0.6)	1.9	1.3	1.6	(0.7)	1.3	T	מינהל מקומי, ציבורי וביטחון
8.8	21.2	5.1	13.8	8.4	28.1	1	וביטוח לאומי
61.7	142.5	57.0	98.1	75.2	208.6	2	חינוך
27.3	61.0	21.0	47.1	31.3	92.3	3	שירותי בריאות, רוחה וסעד
12.8	27.0	12.1	20.5	17.0	43.7	4	אמנות, ביחור ופנאי
39.0	79.8	35.0	70.0	49.0	114.8	5	שירותים אחרים
2.0	2.4	1.5	2.8	4.6	7.7	6	משקי בית כמעסיקים
20.7	43.9	20.2	40.0	32.9	74.8	7-8	משלח יד
6.4	14.2	8.2	13.6	8.9	20.1	9	מנהלים
							בעלי משלח יד אקדמי
							הנדסאים, טכנאים, סוכנים
							ובעלי משלח יד לנחה
							פקידים כלליים ועובדי משרד
							עובדי מכרות ושירותים
							עובדים מקצועיים
							בחקלאות, בייעור ובדיג
							ועובדים מקצועיים בתעשייה ובבינוי
							ועובדים מקצועיים אחרים
							עובדים בלתי מקצועיים

(1) אינו כולל את הנגרים מחוץ ליישובים (בדוים בדרום) או במוסדות (מדגמים קבועים).
(2) כולל מועסקים בענף "ארגונים וגופים חוץ-מדינתיים" (סדר U)

ומועסקים שהענף הכלכלי או משלח היד שלהם אינו ידוע.

(3) כולל מועסקים או שכירים בענפים: 30, 35, 36, 37, 5310, 83, 84, 85, 851, 852, 853, 854, 855, 861, 862, 8620, 8623, 91, 944, 99.

(4) לא כולל מקרים בהם ענף כלכלי אינו ידוע.

TABLE 1 - EMPLOYED PERSONS AND EMPLOYEES AND AMONG THEM - THOSE WHO TEMPORARILY ABSENT FROM WORK ALL THE WEEK OR PART OF THE WEEK , BY INDUSTRY AND OCCUPATION, ORIGINAL DATA (1)
Thousands

Code	Industry and occupation	Employees שכירים								
		מרץ 2025 March 2025			פברואר 2025 R February 2025 R			מרץ 2024 March 2024		
		מזה: הגעדרים זמנית מעבודתם כל השבוע או חלק מהשבוע :Thereof Temporarily absent from work all the week or part of the week		סה"כ	מזה: הגעדרים זמנית מעבודתם כל השבוע או חלק מהשבוע :Thereof Temporarily absent from work all the week or part of the week		סה"כ	מזה: הגעדרים זמנית מעבודתם כל השבוע או חלק מהשבוע :Thereof Temporarily absent from work all the week or part of the week		סה"כ
		מזה: הגעדרים זמנית מעבודתם כל השבוע :Thereof Temporarily absent from work all the	סה"כ Total	Total	מזה: הגעדרים זמנית מעבודתם כל השבוע :Thereof Temporarily absent from work all the	סה"כ Total	Total	מזה: הגעדרים זמנית מעבודתם כל השבוע :Thereof Temporarily absent from work all the	סה"כ Total	Total
	TOTAL (2)	161.1	343.7	3,847.2	139.6	260.0	3,847.2	197.6	519.4	3,766.8
	In Public Sector by industry definition (3)	45.4	114.1	1,179.2	47.5	75.0	1,170.3	44.6	142.8	1,107.1
	Not in Public Sector by industry definition (4)	112.0	224.3	2,551.0	90.1	182.1	2,571.5	146.8	367.2	2,559.7
	INDUSTRY									
A	Agriculture, forestry and fishing	2.8	2.8	21.9	2.2	2.8	20.5	2.1	4.1	23.4
B-C	Manufacturing; Mining and quarrying	14.1	30.3	372.8	12.8	24.4	370.1	18.3	52.8	361.6
D	Electricity supply	..	(0.8)	12.8	1.3	1.3	13.3	(0.7)	1.8	18.3
E	Water supply, sewerage and waste management	..	2.0	18.8	-	1.3	16.3	2.0	5.0	18.0
F	Construction	6.7	15.6	192.8	6.6	18.1	202.2	12.8	26.4	180.9
G	Wholesale and retail trade and repair of motor vehicles	17.9	34.3	378.1	10.2	27.9	387.3	16.6	41.0	386.0
H	Transportation, storage, postal and courier activities	7.6	14.6	157.1	4.0	5.5	152.4	11.2	25.2	163.5
I	Accommodation and food service activities	6.9	14.7	137.1	6.9	14.6	133.4	12.4	24.1	137.4
J	Information and communications	12.0	22.7	255.3	10.8	19.2	271.1	11.9	40.4	266.9
K	Financial and insurance activities	4.9	12.4	139.6	4.6	13.6	136.7	9.0	28.3	132.9
L	Real estate activities	..	(0.7)	24.8	1.4	2.4	17.4	..	1.7	18.9
M	Professional, scientific and technical activities	10.7	19.1	230.4	8.0	14.8	234.1	18.0	42.9	253.3
N	Administrative and support service activities	9.1	17.8	149.0	7.9	12.4	159.3	8.6	19.0	137.5
O	Local, public and defence administration and social security	9.7	24.3	455.4	7.2	17.1	450.0	10.3	33.1	404.7
P	Education	25.4	70.9	538.4	27.3	38.8	531.2	29.8	92.5	515.8
Q	Human health and social work activities	22.4	43.2	465.5	21.4	34.9	475.4	20.9	56.6	476.4
R	Arts, entertainment and recreation	2.7	4.4	46.3	1.9	3.3	39.9	3.9	5.7	37.0
S	Other service activities	3.4	6.4	75.1	1.8	3.1	68.7	2.1	8.2	73.5
T	Households as employers	..	1.3	58.4	1.3	1.6	61.8	..	1.0	59.9
	OCCUPATION									
1	Managers	8.4	18.9	257.7	4.6	11.3	250.2	7.6	24.3	241.1
2	Professionals	52.9	121.7	1,163.5	47.9	82.3	1,176.0	65.2	185.0	1,140.3
3	Practical engineers, technicians, agents, and associate professionals	23.1	51.9	553.4	17.5	39.1	544.3	25.4	79.8	543.4
4	Clerical support workers	12.8	27.0	243.8	12.1	20.5	246.7	16.3	43.0	261.8
5	Service and sales workers	34.5	69.4	690.6	31.3	58.4	690.2	39.8	95.2	713.3
6	Skilled agricultural, forestry and fishery workers	1.4	1.4	14.1	(0.9)	1.7	14.8	2.4	3.7	18.0
7-8	Skilled workers in manufacturing and construction, and other skilled workers	16.7	32.7	419.4	14.6	29.3	424.4	26.1	57.3	420.2
9	Elementary occupations	6.1	12.8	197.8	7.5	12.9	197.2	8.3	18.9	165.2

(1) Excl. persons living outside localities (Bedouins in the South) or in institutions (permanent samples).

(2) Incl. employed persons in the industry "Extra-Territorial Organizations and Bodies"

(Category U), and employed persons whose industry or occupation are not known

(3) Incl. employed persons or employees in the industries: 30, 35, 36, 37, 5310, 83, 84, 850, 851, 852, 853, 854, 855, 861, 8620, 8623, 91, 944, 99.

(4) Excl. employed persons or employees whose industry is not known.

לוח 2 - מועסקים ומהם - הנעדרים זמנית מעבודתם כל השבוע או חלק מהשבוע לפי גיל ומין, נתונים מקוריים (1)

TABLE 2 - EMPLOYED PERSONS AND AMONG THEM - THOSE WHO TEMPORARILY ABSENT FROM WORK ALL THE WEEK OR PART OF A WEEK, BY AGE AND SEX, ORIGINAL DATA (1)

Age and sex	מרץ 2025 March 2025			פברואר 2025 February 2025 R			מרץ 2024 March 2024			קבוצות גיל ומין
	מה: הנעדרים זמנית מעבודתם כל השבוע או חלק מהשבוע :Thereof Temporarily absent from work all the week or part of the week		סך הכל Total	מה: הנעדרים זמנית מעבודתם כל השבוע או חלק מהשבוע :Thereof Temporarily absent from work all the week or part of the week		סך הכל Total	מה: הנעדרים זמנית מעבודתם כל השבוע או חלק מהשבוע :Thereof Temporarily absent from work all the week or part of the week		סך הכל Total	
	מה: הנעדרים זמנית מעבודתם כל השבוע :Thereof Temporarily absent from work all the week	סה"כ Total		מה: הנעדרים זמנית מעבודתם כל השבוע :Thereof Temporarily absent from work all the week	סה"כ Total		מה: הנעדרים זמנית מעבודתם כל השבוע :Thereof Temporarily absent from work all the week	סה"כ Total		
	אלפים	סך הכל	אלפים	סך הכל	אלפים	סך הכל	אלפים	סך הכל	אלפים	
Thousands	185.6	401.3	4,417.3	163.4	310.3	4,394.2	233.8	602.6	4,350.7	
15-17	2.5	2.5	33.8	3.2	3.8	36.3	3.2	3.8	35.4	15-17
18-24	22.3	39.9	601.2	17.0	31.4	595.6	32.9	63.5	593.0	18-24
25-29	27.4	49.3	455.7	24.9	41.1	451.2	35.2	75.8	462.8	25-29
30-34	37.1	58.7	502.0	36.3	52.6	491.4	40.4	89.1	483.0	30-34
35-44	36.4	98.4	1,026.0	29.9	62.4	1,022.1	49.1	152.1	1,014.0	35-44
45-54	23.0	74.0	906.1	23.0	58.7	915.0	31.8	107.1	885.1	45-54
55-59	11.7	27.6	354.9	9.1	19.9	344.9	14.5	40.4	348.8	55-59
60-64	12.2	24.6	261.4	9.1	18.7	267.8	14.9	41.0	274.3	60-64
65-69	7.3	17.0	156.1	6.0	12.7	152.8	5.6	18.0	146.4	65-69
70-74	3.5	6.2	75.4	4.0	7.1	74.8	3.9	8.7	72.1	70-74
75 and over	2.3	3.1	44.7	1.0	2.0	42.4	2.4	3.2	35.8	75 ומעלה
55 and over	37.0	78.5	892.4	29.2	60.4	882.7	41.3	111.3	877.4	55 ומעלה
65 and over	13.1	26.3	276.2	11.0	21.7	270.1	11.9	29.8	254.3	65 ומעלה
Total Men	79.2	188.6	2,259.3	68.4	141.4	2,260.2	112.4	286.3	2,216.1	סך הכל גברים
15-17	(0.7)	(0.7)	13.0	2.0	2.3	16.3	1.1	1.5	15.1	15-17
18-24	9.4	16.5	304.7	7.6	15.4	302.8	18.9	30.6	285.3	18-24
25-29	11.1	19.9	232.7	10.2	16.5	235.5	16.4	34.7	234.1	25-29
30-34	10.2	18.7	241.7	7.5	15.9	238.5	15.6	38.8	244.4	30-34
35-44	15.8	47.2	521.8	9.5	26.2	521.7	19.5	69.4	512.2	35-44
45-54	10.3	37.1	459.0	14.4	31.6	457.3	18.4	54.8	441.2	45-54
55-59	6.2	17.0	177.6	7.0	11.4	183.6	6.0	15.5	174.7	55-59
60-64	7.8	15.1	145.0	2.8	8.3	138.1	10.4	22.8	159.5	60-64
65-69	4.9	11.8	90.7	3.5	8.0	91.8	3.2	10.5	84.4	65-69
70-74	1.5	2.9	44.9	3.3	4.6	43.6	1.8	5.7	41.1	70-74
75 and over	1.4	1.6	28.3	(0.6)	1.3	31.2	1.2	2.0	24.1	75 ומעלה
55 and over	21.7	48.5	486.6	17.3	33.6	488.1	22.6	56.5	483.8	55 ומעלה
65 and over	7.7	16.4	164.0	7.5	13.9	166.5	6.1	18.2	149.6	65 ומעלה
Total Women	106.4	212.7	2,157.9	95.1	168.9	2,134.0	121.4	316.3	2,134.7	סך הכל נשים
15-17	1.8	1.8	20.8	1.2	1.6	20.0	2.1	2.3	20.3	15-17
18-24	12.9	23.5	296.5	9.4	16.0	292.8	14.0	32.9	307.7	18-24
25-29	16.3	29.4	223.1	14.7	24.5	215.7	18.9	41.2	228.8	25-29
30-34	26.9	40.0	260.3	28.8	36.7	252.9	24.7	50.3	238.6	30-34
35-44	20.6	51.2	504.2	20.5	36.3	500.4	29.7	82.6	501.8	35-44
45-54	12.7	36.9	447.1	8.6	27.1	457.7	13.4	52.3	443.9	45-54
55-59	5.5	10.6	177.3	2.0	8.5	161.3	8.5	24.9	174.1	55-59
60-64	4.4	9.4	116.3	6.3	10.4	129.7	4.4	18.2	114.8	60-64
65-69	2.4	5.1	65.4	2.5	4.6	61.0	2.4	7.5	62.0	65-69
70-74	2.0	3.4	30.5	(0.7)	2.6	31.3	2.1	3.0	31.0	70-74
75 and over	(0.9)	1.5	16.4	..	(0.7)	11.3	1.2	1.2	11.7	75 ומעלה
55 and over	15.3	30.0	405.9	11.8	26.8	394.6	18.7	54.8	393.6	55 ומעלה
65 and over	5.4	10.0	112.2	3.5	7.9	103.6	5.8	11.7	104.7	65 ומעלה

(1) Excl. persons living outside localities (Bedouins in the South) or in institutions (permanent samples).

(1) אינו כולל את הגרים מחוץ ליישובים (בדווים בדרום) או במוסדות (מדגמים קבועים).

לוח 6 - אחוז הבלתי מועסקים מכוח העבודה לפי גיל ומין, נתונים מקוריים

TABLE 6 - PERCENTAGE OF UNEMPLOYED PERSONS OUT OF LABOUR FORCE, BY AGE AND SEX, ORIGINAL DATA

Age and sex	מרץ 2025	פברואר 2025 R	מרץ 2024	קבוצות גיל ומין
	March 2025	February 2025 R	march 2024	
	סך הכל Total	סך הכל Total	סך הכל Total	
Total	2.6	2.7	3.1	סך הכל
15-17	4.2	7.2	7.5	15-17
18-24	3.4	4.0	4.3	18-24
25-29	3.6	5.3	4.6	25-29
30-34	3.1	3.3	3.7	30-34
35-44	2.2	2.1	2.9	35-44
45-54	2.3	1.9	2.4	45-54
55-59	2.3	1.7	1.4	55-59
60-64	2.3	1.2	2.7	60-64
65-69	1.3	1.6	1.3	65-69
70-74	0.8	1.3	2.0	70-74
75 and over	-	75 ומעלה
55 and over	1.9	1.4	1.8	55 ומעלה
65 and over	1.0	1.3	1.4	65 ומעלה
Total Men	2.6	2.6	3.5	סך הכל גברים
15-17	6.6	11.0	9.3	15-17
18-24	3.2	3.3	5.1	18-24
25-29	4.5	5.6	5.7	25-29
30-34	2.9	3.1	3.9	30-34
35-44	2.0	1.7	3.0	35-44
45-54	2.1	2.3	3.1	45-54
55-59	2.4	1.4	1.5	55-59
60-64	2.6	1.2	2.3	60-64
65-69	1.9	1.4	1.3	65-69
70-74	..	2.0	2.9	70-74
75 and over	-	-	..	75 ומעלה
55 and over	2.1	1.3	1.8	55 ומעלה
65 and over	1.2	1.3	1.6	65 ומעלה
Total Women	2.6	2.8	2.7	סך הכל נשים
15-17	2.5	3.7	6.0	15-17
18-24	3.6	4.7	3.7	18-24
25-29	2.7	5.0	3.5	25-29
30-34	3.2	3.5	3.4	30-34
35-44	2.5	2.6	2.7	35-44
45-54	2.4	1.5	1.7	45-54
55-59	2.3	2.0	1.3	55-59
60-64	2.0	1.1	3.1	60-64
65-69	..	1.8	1.4	65-69
70-74	70-74
75 and over	-	..	-	75 ומעלה
55 and over	1.7	1.5	1.8	55 ומעלה
65 and over	0.6	1.4	1.0	65 ומעלה

לוח 7 - מועסקים ושכירים (לא כולל הנעדרים זמנית מעבודתם כל השבוע),
ממוצע שעות עבודה בשבוע, לפי ענף כלכלי ומשלח יד ועבודה מהבית/מרחוק,
נתונים מקוריים, מרץ 2025 (1)

Employed persons (2)		מועסקים (2)		סה"כ Total	ענף כלכלי ומשלח יד	סמל
אחוז עובדים מהבית/מרחוק Percentage working from home/remotely	ממוצע שעות עבודה בשבוע שעבדו מהבית/מרחוק Average weekly work-hours from home/remotely	עבדו מהבית/מרחוק בשבוע הקובע Worked from home/remotely in determinant week	ממוצע שעות עבודה בשבוע Average weekly work- hours			
19.7	23.3	833.4	38.9	4,231.7	סך הכל - אלפים (3) במגזר ציבורי לפי הגדרה ענפית (4) לא במגזר ציבורי לפי הגדרה ענפית (5) ענף כלכלי	
8.9	20.1	101.1	39.4	1,138.7		
24.1	23.8	716.3	38.7	2,974.5		
12.5	37.9	3.7	44.0	29.9	A	חקלאות, ייעור ודיג
16.0	22.4	61.1	42.9	381.6	B-C	תעשייה; כרייה וחציבה
32.5	17.1	4.1	45.6	12.5	D	אספקת חשמל
8.8	26.0	1.6	42.2	18.5	E	אספקת מים, שירותי ביוב וטיהור וטיפול בפסולת
7.8	22.6	18.8	40.8	239.4	F	בינוי
11.3	24.8	47.1	39.9	416.9	G	מסחר סיטוני וקמעוני
						ותיקון כלי רכב מנועיים
7.6	22.1	13.7	40.6	179.9	H	שירותי תחבורה, אחסנה, דואר ובלדרות
5.5	18.0	8.1	34.9	146.1	I	שירותי אירוח ואוכל
64.2	23.5	164.6	43.3	256.5	J	מידע ותקשורת
36.8	19.9	52.9	40.9	143.8	K	שירותים פיננסיים ושירותי ביטוח
35.2	25.7	14.0	39.9	39.7	L	פעילויות בנדל"ן
44.6	26.1	144.3	40.7	323.2	M	שירותים מקצועיים, מדעיים וטכניים
13.9	29.9	21.1	38.9	152.3	N	שירותי ניהול ותמיכה
7.4	18.7	32.9	45.6	447.2	O	מינהל מקומי, ציבורי וביטחון וביטוח לאומי
14.5	19.0	80.7	32.5	555.7	P	חינוך
17.0	23.6	85.7	33.9	505.0	Q	שירותי בריאות, רווחה וסעד
29.8	28.9	22.9	32.1	76.8	R	אמנות, בידור ופנאי
31.4	21.8	40.1	32.4	127.6	S	שירותים אחרים
-	-	-	40.5	60.0	T	משקי בית כמעסיקים
						משלח יד
22.9	23.0	66.3	46.2	290.2	1	מנהלים
35.0	22.6	451.1	38.3	1,288.1	2	בעלי משלח יד אקדמי
23.8	22.1	147.5	38.2	619.6	3	הנדסאים, טכנאים, סוכנים ובעלי משלח יד נלווה
19.7	21.8	46.4	37.5	235.2	4	פקידים כלליים ועובדי משרד
11.1	27.0	84.5	34.5	764.3	5	עובדי מכירות ושירותים
7.8	44.3	1.8	45.0	23.0	6	עובדים מקצועיים
						בחקלאות, בייעור ובדיג
4.3	33.6	21.8	41.6	506.8	7-8	עובדים מקצועיים בתעשייה ובבינוי ועובדים מקצועיים אחרים
0.9	23.5	1.9	37.3	197.5	9	עובדים בלתי מקצועיים

(1) אינו כולל את הגרים מחוץ ליישובים (בדוים בדרום) או במוסדות (מדגמים קבועים).

החל מינואר 2024 נשאלים הנדגמים האם עבדו בשבוע שעבר מהבית או מרחוק,
עד דצמבר 2023 נשאלו האם עבדו בשבוע שעבר מהבית.

(2) לא כולל נעדרים זמנית מעבודתם כל השבוע.

(3) כולל מועסקים בענף "ארגונים וגופים חוץ-מדינתיים" (סדר U), מועסקים שהענף הכלכלי

או משלח היד שלהם אינו ידוע ומועסקים עבורם לא ידוע אם עבדו מהבית/מרחוק בשבוע הקובע.

(4) כולל מועסקים או שכירים בענפים: 30, 35, 36, 37, 38, 39, 40, 41, 42, 43, 44, 45, 46, 47, 48, 49, 50, 51, 52, 53, 54, 55, 56, 57, 58, 59, 60, 61, 62, 63, 64, 65, 66, 67, 68, 69, 70, 71, 72, 73, 74, 75, 76, 77, 78, 79, 80, 81, 82, 83, 84, 85, 86, 87, 88, 89, 90, 91, 92, 93, 94, 95, 96, 97, 98, 99.

(5) לא כולל מקרים בהם ענף כלכלי אינו ידוע.

TABLE 7 - EMPLOYED PERSONS AND EMPLOYEES (EXCLUDING PERSONS TEMPORARILY ABSENT FROM WORK ALL THE WEEK), AVERAGE WEEKLY WORK-HOURS, BY INDUSTRY, OCCUPATION AND WORKING FROM HOME/REMOТЕLY, ORIGINAL DATA, MARCH 2025 (1)

Code	Industry and occupation	Employees (2)		(2) שכירים		סה"כ Total
		אחוז עובדים מהבית/מרחוק Percentage working from home/remotely	ממוצע שעות עבודה בשבוע שעבדו מהבית/מרחוק Average weekly work-hours from home/remotely	עבדו מהבית/מרחוק בשבוע הקובע Worked from home/remotely in determinant week	ממוצע שעות עבודה בשבוע Average weekly work-hours	
	TOTAL (3)	16.5	21.8	608.7	39.2	3,686.1
	In Public Sector by industry definition (4)	8.9	20.0	100.7	39.4	1,133.9
	Not in Public Sector by industry definition (5)	20.2	22.2	493.6	39.1	2,439.0
	INDUSTRY					
A	Agriculture, forestry and fishing	11.7	30.4	2.2	41.7	19.1
B-C	Manufacturing; Mining and quarrying	15.8	21.1	56.6	43.0	358.7
D	Electricity supply	32.5	17.1	4.1	45.6	12.5
E	Water supply, sewerage and waste management	8.8	26.0	1.6	42.2	18.5
F	Construction	7.7	20.6	14.3	41.4	186.1
G	Wholesale and retail trade and repair of motor vehicles	9.4	23.6	34.0	39.2	360.2
H	Transportation, storage, postal and courier activities	7.8	22.4	11.6	41.1	149.5
I	Accommodation and food service activities	4.0	11.9	5.2	33.2	130.2
J	Information and communications	63.5	23.1	154.6	43.2	243.3
K	Financial and insurance activities	36.1	19.7	48.6	40.9	134.7
L	Real estate activities	18.5	19.5	4.5	38.3	24.5
M	Professional, scientific and technical activities	37.2	24.1	81.7	41.9	219.8
N	Administrative and support service activities	11.3	28.5	15.8	38.9	139.9
O	Local, public and defence administration and social security	7.3	18.4	32.5	45.6	445.7
P	Education	11.7	19.2	59.8	32.9	513.0
Q	Human health and social work activities	11.3	21.4	50.1	34.3	443.1
R	Arts, entertainment and recreation	9.1	16.6	3.9	31.0	43.6
S	Other service activities	18.3	19.0	13.1	33.8	71.7
T	Households as employers	-	-	-	41.0	58.2
	OCCUPATION					
1	Managers	23.7	22.9	59.0	46.4	249.3
2	Professionals	31.1	21.4	345.8	38.9	1,110.6
3	Practical engineers, technicians, agents, and associate professionals	19.2	19.9	101.9	38.6	530.2
4	Clerical support workers	19.1	21.4	44.1	37.4	231.0
5	Service and sales workers	5.4	25.5	35.5	34.4	656.1
6	Skilled agricultural, forestry and fishery workers	2.3	19.0	..	42.4	12.7
7-8	Skilled workers in manufacturing and construction, and other skilled workers	2.5	35.5	9.9	42.1	402.6
9	Elementary occupations	0.8	26.5	1.5	37.3	191.7

(1) Excl. persons living outside localities (Bedouins in the South) or in institutions (permanent samples). Starting in January 2024, the respondents are asked whether they worked last week from home or remotely. Until December 2023, they were asked whether they worked last week from home.

(2) Excl. temporarily absent from work all week.

(3) Incl. employed persons in the industry "Extra-Territorial Organizations and Bodies" (Category U), employed persons whose industry or occupation are not known, and employed person that not known if worked from home/remotely in determinant week.

(4) Incl. employed persons or employees in the industries: 30, 35, 36, 37, 5310, 83, 84, 850, 851, 852, 853, 854, 855, 861, 8620, 8623, 91, 944, 99.

(5) Excl. employed persons or employees whose industry is not known.

מועסקים									סיבת העדרות
מרץ 2025 March 2025			פברואר 2025 R February 2025 R			מרץ 2024 March 2024			
נעדרים זמנית מעבודתם כל השבוע או חלק מהשבוע			נעדרים זמנית מעבודתם כל השבוע או חלק מהשבוע			נעדרים זמנית מעבודתם כל השבוע או חלק מהשבוע			
Temporarily absent from work all the week or part of the week			Temporarily absent from work all the week or part of the week			Temporarily absent from work all the week or part of the week			
הנעדרים זמנית מעבודתם חלק מהשבוע	הנעדרים זמנית מעבודתם כל השבוע	סה"כ	הנעדרים זמנית מעבודתם חלק מהשבוע	הנעדרים זמנית מעבודתם כל השבוע	סה"כ	הנעדרים זמנית מעבודתם חלק מהשבוע	הנעדרים זמנית מעבודתם כל השבוע	סה"כ	
Temporarily absent from work part of the week	Temporarily absent from work all the week	Total	Temporarily absent from work part of the week	Temporarily absent from work all the week	Total	Temporarily absent from work part of the week	Temporarily absent from work all the week	Total	
215.7	185.6	401.3	146.9	163.4	310.3	368.8	233.8	602.6	סך הכל
39.8	41.5	81.4	47.7	34.3	82.0	46.4	30.5	76.9	מחלה שלו
1.8	4.9	6.7	..	5.4	5.7	-	10.0	10.0	תאונה שלו
6.4	2.0	8.4	7.8	(0.9)	8.7	8.1	(0.8)	8.9	מחלה של ילד
2.3	2.1	4.4	4.1	1.5	5.6	1.7	(0.7)	2.4	מחלה של בן משפחה אחר
-	41.2	41.2	1.2	41.8	42.9	3.2	50.6	53.7	חופשת לידה עד 26 שבועות
59.4	55.3	114.7	55.2	43.0	98.2	71.8	40.1	111.9	חופשה אחרת
77.0	6.4	83.4	(0.8)	-	(0.8)	188.1	2.6	190.7	חגים ומועדים
5.0	19.5	24.5	3.9	19.8	23.7	6.8	48.3	55.0	מילואים
17.9	10.4	28.3	13.0	10.0	23.0	29.2	46.5	75.8	צמצום בהיקף עבודה/ הפסקה זמנית עד 30 יום
-	1.2	1.2	(0.8)	..	-	..	סכסוך עבודה, שביתה או השבתה
..	(0.9)	1.3	4.2	2.8	7.0	1.8	-	1.8	מזג אוויר
3.2	..	3.4	4.6	2.5	7.2	8.5	2.3	10.8	סיבה אחרת
2.5	-	2.5	3.6	1.1	4.7	2.9	1.4	4.4	לא ידוע
109.4	79.2	188.6	73.1	68.4	141.4	173.9	112.4	286.3	גברים
20.1	21.9	42.0	19.0	16.5	35.5	20.2	13.6	33.8	מחלה שלו
(0.8)	2.9	3.7	..	3.2	3.5	-	7.4	7.4	תאונה שלו
3.2	-	3.2	1.1	(0.5)	1.7	3.6	..	4.0	מחלה של ילד
..	(0.8)	1.2	1.6	-	1.6	(0.8)	מחלה של בן משפחה אחר
-	(0.8)	-	(0.8)	1.0	..	1.3	חופשת לידה עד 26 שבועות
34.1	26.2	60.3	25.8	22.9	48.7	35.5	19.2	54.7	חופשה אחרת
28.2	2.2	30.4	..	-	..	79.2	2.6	81.8	חגים ומועדים
5.0	16.6	21.6	3.6	15.8	19.4	6.8	42.5	49.2	מילואים
14.0	6.1	20.1	10.5	5.8	16.2	19.0	23.6	42.6	צמצום בהיקף עבודה/ הפסקה זמנית עד 30 יום
-	1.2	1.2	..	-	-	..	סכסוך עבודה, שביתה או השבתה
..	(0.9)	1.3	3.5	2.4	5.9	1.8	-	1.8	מזג אוויר
1.5	-	1.5	3.1	1.0	4.0	4.7	2.1	6.8	סיבה אחרת
1.9	-	1.9	2.9	..	3.3	1.5	..	1.8	לא ידוע
106.3	106.4	212.7	73.8	95.1	168.9	194.9	121.4	316.3	נשים
19.8	19.6	39.4	28.7	17.9	46.5	26.2	16.9	43.1	מחלה שלו
1.0	2.0	3.0	-	2.2	2.2	-	2.6	2.6	תאונה שלו
3.2	2.0	5.2	6.7	..	7.0	4.5	..	4.9	מחלה של ילד
1.9	1.3	3.2	2.5	1.5	4.0	1.3	..	1.6	מחלה של בן משפחה אחר
-	40.8	40.8	..	41.8	42.1	2.2	50.2	52.4	חופשת לידה עד 26 שבועות
25.3	29.1	54.4	29.4	20.1	49.6	36.3	20.9	57.2	חופשה אחרת
48.8	4.2	53.0	..	-	..	108.9	-	108.9	חגים ומועדים
-	2.9	2.9	..	4.0	4.3	-	5.8	5.8	מילואים
4.0	4.3	8.3	2.5	4.2	6.7	10.2	22.9	33.2	צמצום בהיקף עבודה/ הפסקה זמנית עד 30 יום
-	-	-	-	-	-	-	סכסוך עבודה, שביתה או השבתה
-	-	-	(0.7)	..	1.1	-	-	-	מזג אוויר
1.8	..	1.9	1.5	1.6	3.1	3.9	..	4.0	סיבה אחרת
(0.6)	-	(0.6)	(0.7)	(0.7)	1.4	1.4	1.1	2.6	לא ידוע

(1) אינו כולל את הגרים מחוץ ליישובים (בדוים בדרום) או במסודות (מדגמים קבועים).

TABLE 8- TEMPORARY ABSENT FROM WORK ALL WEEK OR PART OF THE WEEK
BY REASON FOR ABSENCE AND SEX - ORIGINAL DATA

Thousands

Reason for absence	Employees שכירים								
	מרץ 2025 March 2025			פברואר 2025 R February 2025 R			מרץ 2024 March 2024		
	נעדרים זמנית מעבודתם כל השבוע או חלק מהשבוע			נעדרים זמנית מעבודתם כל השבוע או חלק מהשבוע			נעדרים זמנית מעבודתם כל השבוע או חלק מהשבוע		
	Temporarily absent from work all the week or part of the week			Temporarily absent from work all the week or part of the week			Temporarily absent from work all the week or part of the week		
	הנעדרים זמנית מעבודתם חלק מהשבוע	הנעדרים זמנית מעבודתם כל השבוע	סה"כ	הנעדרים זמנית מעבודתם חלק מהשבוע	הנעדרים זמנית מעבודתם כל השבוע	סה"כ	הנעדרים זמנית מעבודתם חלק מהשבוע	הנעדרים זמנית מעבודתם כל השבוע	סה"כ
	Temporarily absent from work part of the week	Temporarily absent from work all the week	Total	Temporarily absent from work part of the week	Temporarily absent from work all the week	Total	Temporarily absent from work part of the week	Temporarily absent from work all the week	Total
Total	182.6	161.1	343.7	120.4	139.6	260.0	321.8	197.6	519.4
His/her illness	35.3	37.1	72.4	40.9	29.0	69.9	41.8	26.2	68.1
His/her accident	1.2	4.9	6.1	..	4.5	4.8	-	9.8	9.8
Illness of child	6.1	1.5	7.6	6.3	(0.9)	7.1	7.7	(0.6)	8.3
Illness of other family member	2.3	(0.9)	3.1	3.6	1.5	5.1	(0.5)	..	(0.9)
Maternity leave (up to 26 weeks)	-	37.3	37.3	(0.8)	36.9	37.7	3.2	47.3	50.5
Other vacation	53.5	47.4	100.9	49.3	38.9	88.2	63.8	36.5	100.3
Festivals	66.3	5.8	72.0	(0.8)	-	(0.8)	170.7	2.6	173.3
Reserve army service	4.6	18.6	23.2	3.1	17.3	20.4	5.3	43.0	48.3
Reduction of employment job	9.1	6.7	15.8	7.6	5.1	12.7	18.0	28.7	46.6
Labour dispute, strike, or lock-out	-	1.0	1.0	-	-	..
Weather	-	-	-	3.0	1.6	4.6	(0.8)	-	(0.8)
Other reason	2.6	-	2.6	2.7	2.5	5.2	7.3	1.5	8.8
Not known	1.7	-	1.7	2.1	1.1	3.2	2.3	1.1	3.4
Men	89.8	68.6	158.4	56.8	52.5	109.3	143.7	90.8	234.5
His/her illness	18.0	19.6	37.5	14.9	11.7	26.5	16.6	11.7	28.3
His/her accident	(0.5)	2.9	3.4	..	2.2	2.6	-	7.2	7.2
Illness of child	3.2	-	3.2	1.1	(0.5)	1.7	3.3	..	3.7
Illness of other family member	..	-	..	1.6	-	1.6	-	-	-
Maternity leave (up to 26 weeks)	-	-	..	1.0	..	1.3
Other vacation	29.6	22.3	51.9	23.0	19.4	42.3	31.6	16.9	48.5
Festivals	24.5	1.9	26.5	..	-	..	69.1	2.6	71.7
Reserve army service	4.6	16.1	20.7	2.8	13.7	16.4	5.3	37.8	43.1
Reduction of employment job	7.0	4.4	11.4	6.8	2.1	8.9	11.3	12.5	23.8
Labour dispute, strike, or lock-out	-	1.0	1.0	-	-	-	..	-	..
Weather	-	-	-	2.6	1.6	4.1	(0.8)	-	(0.8)
Other reason	1.1	-	1.1	1.1	1.0	2.1	3.5	1.3	4.8
Not known	1.1	-	1.1	1.8	..	2.2	(0.9)	-	(0.9)
Women	92.8	92.5	185.3	63.7	87.1	150.7	178.1	106.8	284.9
His/her illness	17.3	17.5	34.8	26.1	17.4	43.4	25.3	14.5	39.8
His/her accident	(0.7)	2.0	2.7	-	2.2	2.2	-	2.6	2.6
Illness of child	2.9	1.5	4.5	5.1	..	5.4	4.5	..	4.7
Illness of other family member	1.9	(0.9)	2.8	1.9	1.5	3.4	(0.5)	..	(0.9)
Maternity leave (up to 26 weeks)	-	37.0	37.0	..	36.9	37.3	2.2	47.0	49.1
Other vacation	24.0	25.1	49.1	26.4	19.5	45.9	32.2	19.6	51.8
Festivals	41.7	3.8	45.5	..	-	..	101.6	-	101.6
Reserve army service	-	2.5	2.5	..	3.6	3.9	-	5.2	5.2
Reduction of employment job	2.1	2.2	4.3	(0.9)	3.0	3.8	6.6	16.2	22.8
Labour dispute, strike, or lock-out	-	-	-	-	-	-	-
Weather	-	-	-	-	-	-
Other reason	1.5	-	1.5	1.5	1.6	3.1	3.9	..	4.0
Not known	(0.6)	-	(0.6)	..	(0.7)	1.0	1.4	1.1	2.6

(1) Excl. persons living outside localities (Bedouins in the South) or in institutions (permanent samples).

לוח 9- שעות עבודה בשבוע של מועסקים
לפי ענף כלכלי ומין - נתונים מקוריים

שירותים פיננסיים ושירותי ביטוח	מידע ותקשורת	שירותי אירוח ואוכל	שירותי תחבורה, אחסנה, דואר ובלדרות	מסחר סיטוני ומקצועי ותיקון כלי רכב מעטים	בנייה	אספקת מים, שירותי ביוב וטיהור וטיפול בפסולת	אספקת חשמל, גז, קיטור ומיזוג אוויר	תעשייה; כרייה וחציבה	חקלאות, ייעור ודיג	סך הכל	מיליונים		
K	J	I	H	G	F	E	D	B+C	A				
5.15	11.68	5.46	7.30	16.11	7.80	0.65	0.68	16.00	1.41	151.72		סך הכל	
5.23	10.78	4.92 R	7.10	16.31 R	8.61 R	0.62	0.69	15.31 R	1.45	152.26 R		I-XII	2023
5.61	11.36	4.98	7.73	16.77	7.68	0.75	0.64	16.32	1.01	157.07		I-XII	2024
5.32	11.32	4.93	7.58	17.07	8.30	0.82	0.67	16.70	1.46	158.48		I	
5.56	11.54	5.13	7.95	17.04	8.68	0.68	0.80	15.37	1.54	158.79		II	
4.71	9.27	4.60	6.46	15.09	7.21	0.68	0.53	12.42	1.43	136.38		III	
4.68	10.93	5.22	6.72	15.54	8.37	0.55	0.63	14.08	1.89	147.71		IV	
4.80	11.65	5.35	6.54	16.20	8.58	0.58	0.80	14.77	1.62	151.35		V	
5.35	11.57	5.01	7.10	18.04	9.16	0.54	0.89	17.26	1.54	157.79		VI	
5.17	11.13	5.07	7.23	17.49	9.06	0.49	0.76	16.06	1.51	150.20		VII	
5.71 R	10.73	4.92 R	6.98 R	16.48 R	9.22 R	0.52	0.70	16.11 R	1.21 R	158.33 R		VIII	
4.46 R	7.91 R	4.33 R	5.63 R	13.70 R	7.80 R	0.35	0.55	11.96 R	1.18 R	127.54 R		IX	
5.73	11.09 R	4.83 R	7.35 R	15.90 R	9.28 R	0.62	0.66 R	16.51 R	1.55 R	160.24 R		X	
5.72 R	10.91 R	4.69 R	7.99 R	16.42 R	9.95 R	0.87	0.62	16.16 R	1.50 R	163.19 R		XI	
5.74	11.15 R	4.66 R	8.30 R	16.65 R	10.32 R	0.77 R	0.64 R	16.02 R	1.55 R	162.50 R		XII	
5.80 R	11.97 R	4.78 R	7.76 R	17.21 R	9.90 R	0.70	0.54	16.37 R	1.25	166.44 R		I	2025
5.88	11.11	5.14	7.33	16.71	9.79	0.78	0.57	16.46	1.33	165.40		II	
												III	
												IV	
												V	
												VI	
												VII	
												VIII	
												IX	
												X	
												XI	
												XII	
2.35	7.63	3.47	6.14	10.19	7.17	0.52	0.55	11.55	1.13	85.96		גברים	
2.38	7.10	3.17	6.04 R	10.28 R	7.81 R	0.52	0.51	10.88 R	1.21 R	85.40 R		I-XII	2023
2.91	6.91	3.39	6.53	10.71	7.05	0.64	0.44	11.74	0.88	86.64		I-XII	2024
2.64	7.12	3.31	6.35	11.19	7.58	0.71	0.43	12.14	1.24	87.86		I	
2.63	7.60	3.43	6.58	10.50	7.77	0.55	0.45	11.13	1.28	88.07		II	
2.51	6.02	3.11	5.45	9.37	6.52	0.59	0.28	8.84	1.18	77.32		III	
2.10	7.30	3.37	5.68	9.73	7.57	0.45	0.44	9.76	1.53	82.50		IV	
1.98	7.82	3.39	5.68	10.25	7.76	0.48	0.62	10.00	1.31	84.61		V	
2.33	7.76	3.18	6.09	11.34	8.50	0.46	0.72	11.81	1.24	90.37		VI	
2.11	7.76	3.22	6.22	10.95	8.21	0.38	0.60	11.04	1.27	87.03		VII	
2.36 R	7.36	3.09	6.01 R	10.56 R	8.28 R	0.41	0.55	11.42 R	1.04	88.76 R		VIII	
2.01 R	5.38	2.69 R	4.77 R	8.67 R	7.00 R	0.28	0.50	8.60 R	1.05	71.73 R		IX	
2.52 R	7.19 R	2.85 R	6.38 R	9.68 R	8.38 R	0.49	0.59 R	12.30 R	1.24	88.77 R		X	
2.46 R	7.02 R	3.05 R	6.73 R	10.38 R	9.06 R	0.79	0.50	11.74 R	1.20	91.09 R		XI	
2.52	6.98 R	3.06 R	7.07 R	10.56 R	9.28 R	0.66 R	0.52 R	11.55 R	1.22	91.40 R		XII	
2.56 R	7.62 R	3.21 R	6.60 R	11.24 R	8.91 R	0.57	0.37	11.77 R	0.96	92.59 R		I	2025
2.55	7.09	3.49	6.26	10.49	8.76	0.66	0.41	11.68	1.04	91.45		II	
												III	
												IV	
												V	
												VI	
												VII	
												VIII	
												IX	
												X	
												XI	
												XII	
2.81	4.05	1.99	1.15	5.92	0.63	0.13	0.13	4.45	0.27	65.76		נשים	
2.85 R	3.68	1.75 R	1.07	6.03	0.80	0.10	0.18	4.43	0.25	66.86 R		I-XII	2023
2.69	4.45	1.59	1.20	6.06	0.63	0.11	0.20	4.58	0.13	70.43		I-XII	2024
2.69	4.20	1.62	1.23	5.88	0.72	0.10	0.24	4.56	0.21	70.72		I	
2.93	3.95	1.70	1.37	6.54	0.91	0.13	0.35	4.24	0.26	70.71		II	
2.20	3.25	1.50	1.01	5.72	0.68	0.09	0.25	3.58	0.25	59.06		III	
2.58	3.63	1.86	1.04	5.80	0.80	0.10	0.19	4.33	0.35	65.20		IV	
2.82	3.82	1.96	0.87	5.95	0.83	0.11	0.17	4.77	0.31	66.74		V	
3.02	3.81	1.83	1.02	6.71	0.67	0.08	0.17	5.45	0.30	67.43		VI	
3.07	3.38	1.84	1.01	6.53	0.85	0.11	0.16	5.01	0.24	63.18		VII	
3.35	3.37	1.83 R	0.97	5.93 R	0.94	0.11	0.15	4.69	0.17	69.57 R		VIII	
2.44 R	2.53 R	1.64 R	0.86 R	5.03 R	0.80	0.06	0.05	3.36	0.13	55.81 R		IX	
3.21 R	3.90 R	1.97 R	0.97	6.22 R	0.90 R	0.13	0.07	4.21	0.31	71.47 R		X	
3.26 R	3.89 R	1.64 R	1.27	6.04 R	0.89 R	0.08	0.12	4.41	0.29	72.10 R		XI	
3.22	4.18 R	1.59 R	1.23 R	6.09 R	1.04	0.11	0.12	4.47 R	0.33	71.11 R		XII	
3.24 R	4.36 R	1.57	1.16	5.97	0.99 R	0.14	0.16	4.60 R	0.28	73.85 R		I	2025
3.33	4.02	1.64	1.06	6.22	1.03	0.12	0.16	4.78	0.29	73.94		II	
												III	
												XI	
												XII	

**TABLE 9.- WORKING HOURS PER WEEK OF EMPLOYED PERSONS
BY INDUSTRY AND SEX- ORIGINAL DATA**

Industry	לא ידוע	ארגונים וגופים חוץ-מדינתיים	משקי בית כמעסיקים	שירותים אחרים	אמנות, בידור ופנאי	שירותי בריאות, רווחה וסעד	חינוך	מינהל מקומי, ציבורי ובטחון ובטיח לאומי	שירותי ניהול ותמיכה	שירותים מקצועיים, מדעיים וטכניים	פעילויות בנדל"ן
Unknown	Extraterritorial organizations and bodies	Households as employers	Other service activities	Arts, entertainment and recreation	Human health and social work activities	Education	Local, public and defence administration and social security	Administrative and support service activities	Professional, scientific and technical activities	Real estate activities	
X	U	T	S	R	Q	P	O	N	M	L	
4.11	0.08	2.57	3.46	2.26	15.12	14.38	18.66	5.33	12.52	1.02	
3.99	0.06	2.39 R	3.69	2.35 R	15.87 R	15.49	18.79 R	5.31 R	12.11	1.16	
4.13	0.11	2.12	4.01	2.36	16.45	17.91	18.33	5.39	12.11	1.30	
3.43	0.02	2.39	4.43	2.53	16.85	17.11	18.52	5.65	12.23	1.15	
3.84	0.03	2.42	4.16	2.37	16.99	16.39	17.94	5.49	13.29	1.58	
3.61	0.05	2.31	3.54	1.88	14.19	12.95	17.81	5.06	11.42	1.14	
3.44	0.07	2.28	3.21	2.31	15.42	15.75	18.33	5.30	11.76	1.23	
4.00	0.08	2.29	3.67	2.46	16.17	16.60	18.28	4.41	11.45	1.03	
4.13	0.05	2.45	3.63	2.75	17.27	12.44	18.93	5.75	12.82	1.09	
4.01	0.07	2.41	3.66	2.67	15.00	9.32	20.07	5.47	12.34	1.23	
4.59	0.06	2.43 R	3.83 R	2.37	16.07 R	17.38 R	20.27 R	5.09 R	12.58 R	1.08	
3.18 R	0.04	2.10 R	2.76 R	1.95 R	13.54 R	13.11 R	18.30 R	4.47 R	9.36	0.88 R	
4.32 R	0.07	2.66 R	3.55 R	2.17 R	16.03 R	18.62 R	19.34 R	5.82 R	13.11 R	1.07	
5.23	0.08	2.82 R	3.88 R	2.33 R	16.42 R	18.34 R	19.40 R	5.87 R	12.88 R	1.10	
4.75 R	0.09	2.72 R	3.60 R	2.45 R	16.40 R	17.92 R	18.82 R	6.09 R	12.68 R	1.19 R	
4.27 R	0.03	2.56	3.90	1.98 R	17.92 R	18.40 R	20.41 R	6.33 R	13.06 R	1.29 R	
4.68	0.03	2.43	4.15	2.47	17.19	18.19	20.47	5.95	13.15	1.59	
2.53	0.04	0.51	1.36	1.35	3.78	3.97	10.92	3.25	6.85	0.72	
2.39	0.03	0.43	1.50	1.35	3.92 R	4.15	11.02	3.27 R	6.88	0.76	
2.32	..	0.49	1.65	1.26	3.89	4.64	10.51	3.22	6.59	0.87	
1.84	0.00	0.34	1.78	1.48	3.84	4.58	10.60	3.34	6.61	0.74	
2.10	0.02	0.38	1.73	1.33	4.30	4.21	10.57	3.18	7.25	1.10	
2.29	0.05	0.43	1.31	1.13	3.61	3.64	10.90	3.12	6.25	0.70	
2.21	0.07	0.41	1.23	1.44	3.70	4.00	10.85	3.21	6.63	0.81	
2.48	0.08	0.45	1.50	1.60	3.80	4.54	10.89	2.74	6.53	0.70	
2.57	0.04	0.60	1.38	1.68	4.24	3.97	10.88	3.75	7.12	0.71	
2.35	0.06	0.44	1.48	1.59	3.80	2.86	11.57	3.52	6.77	0.82	
2.76	0.03	0.35	1.50 R	1.27	4.17 R	4.51	12.17 R	3.24 R	6.93	0.76	
2.03	..	0.38	1.10	1.02 R	3.44 R	3.58 R	10.82 R	2.74 R	5.05 R	0.62 R	
2.62	..	0.40	1.66	1.16 R	3.96 R	4.78 R	11.08 R	3.58 R	7.31 R	0.58	
3.09	..	0.47 R	1.65	1.29 R	4.25 R	4.48 R	11.46 R	3.58 R	7.16 R	0.71	
3.08	0.02	0.40 R	1.52	1.36 R	4.51 R	4.62 R	11.10 R	3.66 R	6.93 R	0.77	
2.57	0.02	0.37	1.46	1.16	4.66 R	4.71 R	11.85 R	3.99 R	7.09 R	0.89 R	
2.70	0.03	0.30	1.55	1.55	3.95	4.84	11.86	3.87	7.37	0.98	
1.58	0.04	2.06	2.10	0.92	11.34	10.42	7.74	2.08	5.67	0.30	
1.60	0.03	1.96 R	2.20 R	0.99	11.95 R	11.35 R	7.77 R	2.05	5.43	0.40	
1.81	0.10	1.63	2.36	1.10	12.55	13.27	7.82	2.18	5.52	0.44	
1.59	0.02	2.04	2.66	1.05	13.01	12.53	7.92	2.31	5.62	0.41	
1.74	..	2.05	2.43	1.04	12.69	12.19	7.37	2.31	6.04	0.48	
1.32	..	1.88	2.23	0.75	10.57	9.31	6.91	1.94	5.18	0.44	
1.23	..	1.87	1.97	0.87	11.73	11.75	7.48	2.08	5.12	0.42	
1.52	..	1.84	2.17	0.86	12.37	12.06	7.39	1.67	4.91	0.33	
1.57	0.01	1.85	2.25	1.07	13.03	8.47	8.05	2.01	5.70	0.38	
1.66	..	1.97	2.17	1.08	11.20	6.46	8.50	1.95	5.57	0.41	
1.83	0.03	2.08	2.32	1.10	11.90 R	12.87 R	8.10 R	1.85	5.65 R	0.32	
1.14	0.04	1.72 R	1.66 R	0.93 R	10.10 R	9.53	7.48 R	1.73	4.31 R	0.26	
1.69 R	0.07	2.26 R	1.89 R	1.01	12.06 R	13.84 R	8.25	2.24 R	5.80 R	0.48	
2.14	0.08	2.35 R	2.23 R	1.04 R	12.16 R	13.86 R	7.94 R	2.29	5.72 R	0.38	
1.67 R	0.07	2.31 R	2.08 R	1.09 R	11.88 R	13.29 R	7.72 R	2.43	5.75	0.42 R	
1.70	..	2.19 R	2.43	0.83	13.26 R	13.69 R	8.56 R	2.34 R	5.96	0.40	
1.98	..	2.13	2.60	0.92	13.24	13.35	8.60	2.08	5.78	0.60	

לוח 10 - שעות עבודה בשבוע של שכירים
לפי ענף כלכלי ומין - נתונים מקוריים

שירותים פיננסיים ושירותי ביטוח	מידע ותקשורת	שירותי אירוח ואוכל	שירותי תחבורה, אחסנה, דואר ובלדרות	מסחר סיטוני וקמעוני ותיקון כל רכב מנועים	בנייה	אספקת מים שירותי ביוב וטיהור וטיפול בפסולת	אספקת חשמל, גז, קיטור ומיזוג אוויר	תעשייה; כרייה וחציבה	חקלאות, ייעור ודיג	סך הכל	מיליונים	סך הכל	שנה
K	J	I	H	G	F	E	D	B+C	A				
4.70	11.06	4.63	6.03	13.64	6.00	0.62	0.67	15.04	0.93	133.46	I	2023	
4.75	10.10	4.26 R	5.79 R	13.99 R	6.74 R	0.61	0.69	14.56	0.93 R	133.65 R	I-XII	2024	
5.24	10.82	4.16	6.19	14.20	6.10	0.73	0.64	15.59	0.66	138.38	I	2024	
4.96	10.63	4.32	6.09	14.75	6.45	0.79	0.67	16.01	0.91	139.54	II		
5.07	10.90	4.26	6.43	14.51	6.84	0.67	0.80	14.65	0.86	138.18	III		
4.20	8.72	3.80	5.30	13.06	5.88	0.68	0.53	11.92	0.92	119.72	IV		
4.12	10.32	4.49	5.36	13.45	6.60	0.55	0.63	13.37	1.15	128.96	V		
4.26	10.85	4.72	5.27	13.89	6.75	0.58	0.77	14.09	0.98	132.47	VI		
4.80	10.52	4.35	5.72	15.61	7.04	0.51	0.89	16.35	1.06	137.42	VII		
4.67	10.31	4.45	6.15	14.97	6.81	0.49	0.76	15.28	1.03	132.05	VIII		
5.20 R	9.97	4.30 R	5.89 R	14.16 R	7.08 R	0.50	0.70	15.16	0.76	139.70 R	IX		
4.02	7.32 R	3.75 R	4.65 R	11.67 R	6.05 R	0.34	0.55	11.40 R	0.81 R	112.65 R	X		
5.21	10.50 R	4.27 R	5.91 R	13.59 R	7.26 R	0.62	0.66 R	15.71	1.01 R	140.96 R	XI		
5.30 R	10.37 R	4.23 R	6.53 R	13.97 R	8.04 R	0.87	0.62	15.22 R	0.96	143.73 R	XII		
5.28	10.60 R	3.94 R	6.67 R	14.36 R	8.01 R	0.75 R	0.64 R	15.26 R	1.04 R	142.47 R	I	2025	
5.49 R	11.34 R	4.20 R	6.26 R	14.97 R	7.98 R	0.70	0.54	15.65 R	0.75	147.26 R	II		
5.50	10.51	4.37	6.16	14.18	7.71	0.78	0.57	15.51	0.80	145.16	III		
											IV		
											V		
											VI		
											VII		
											VIII		
											IX		
											X		
											XI		
											XII		
1.95	7.11	2.84	4.91	8.17	5.38	0.50	0.55	10.78	0.68	73.16	I	2023	
1.94 R	6.55	2.64	4.75	8.38 R	5.95 R	0.51	0.51	10.29 R	0.72	72.38 R	I-XII		2024
2.56	6.50	2.68	5.04	8.69	5.47	0.63	0.44	11.14	0.55	73.66	I	2024	
2.31	6.57	2.82	4.91	9.21	5.74	0.69	0.43	11.56	0.74	74.57	II		
2.19	7.08	2.71	5.15	8.36	5.93	0.54	0.45	10.51	0.69	73.45	III		
2.02	5.60	2.51	4.32	7.67	5.22	0.59	0.28	8.40	0.73	65.89	IV		
1.58	6.89	2.72	4.37	7.98	5.83	0.45	0.44	9.21	0.88	69.46	V		
1.47	7.29	2.91	4.44	8.31	5.95	0.48	0.60	9.49	0.75	71.54	VI		
1.81	6.88	2.68	4.73	9.34	6.39	0.43	0.72	11.14	0.79	76.18	VII		
1.65	7.03	2.72	5.16	8.83	5.98	0.38	0.60	10.41	0.82	73.67	VIII		
1.91 R	6.73	2.65	4.94 R	8.70 R	6.14 R	0.39	0.55	10.71	0.61	75.72 R	IX		
1.62 R	4.86	2.27 R	3.79 R	7.13 R	5.28 R	0.28	0.50	8.15 R	0.70 R	61.16 R	X		
2.05 R	6.66 R	2.37 R	4.95 R	7.88 R	6.36 R	0.49	0.59 R	11.69 R	0.74 R	75.35 R	XI		
2.07 R	6.53 R	2.69 R	5.26 R	8.47 R	7.15 R	0.79	0.50	11.07 R	0.68 R	77.93 R	XII		
2.10 R	6.49 R	2.50 R	5.45 R	8.76 R	6.97 R	0.64 R	0.52 R	10.94 R	0.76 R	77.66 R	I	2025	
2.30 R	7.04	2.73 R	5.13	9.33 R	7.00 R	0.57	0.37	11.18 R	0.52	79.48 R	II		
2.27	6.59	2.86	5.14	8.37	6.74	0.66	0.41	10.93	0.61	77.85	III		
											IV		
											V		
											VI		
											VII		
											VIII		
											IX		
											X		
											XI		
											XII		
2.75	3.95	1.79	1.11	5.47	0.62	0.12	0.13	4.26	0.24	60.30	I	2023	
2.82	3.55	1.61	1.03	5.61 R	0.79	0.10	0.18	4.27	0.20	61.26 R	I-XII		2024
2.68	4.32	1.48	1.14	5.52	0.63	0.11	0.20	4.45	0.11	64.72	I	2024	
2.65	4.07	1.50	1.18	5.54	0.71	0.10	0.24	4.45	0.16	64.97	II		
2.88	3.82	1.55	1.28	6.15	0.91	0.13	0.35	4.14	0.18	64.73	III		
2.17	3.11	1.28	0.98	5.39	0.66	0.09	0.25	3.52	0.19	53.83	IV		
2.53	3.44	1.77	0.98	5.47	0.76	0.10	0.19	4.16	0.27	59.49	V		
2.79	3.56	1.81	0.82	5.59	0.80	0.11	0.17	4.60	0.23	60.94	VI		
2.98	3.64	1.67	0.99	6.27	0.65	0.08	0.17	5.20	0.27	61.24	VII		
3.02	3.28	1.73	0.99	6.13	0.82	0.11	0.16	4.87	0.21	58.38	VIII		
3.29	3.25	1.66 R	0.95 R	5.46 R	0.94	0.11	0.15	4.46	0.16	63.98 R	IX		
2.40 R	2.46 R	1.47 R	0.86	4.54 R	0.77	0.06	0.05	3.25	0.11	51.49 R	X		
3.16 R	3.83 R	1.90 R	0.96	5.71 R	0.90 R	0.13	0.07	4.02 R	0.27	65.61 R	XI		
3.23 R	3.84 R	1.53 R	1.27	5.50 R	0.89 R	0.08	0.12	4.16	0.29	65.80 R	XII		
3.18	4.12	1.44 R	1.22	5.60 R	1.04	0.11	0.12	4.32 R	0.28	64.81 R	I	2025	
3.18 R	4.30 R	1.47	1.13 R	5.64 R	0.98 R	0.14	0.16	4.47 R	0.23	67.79 R	II		
3.24	3.92	1.50	1.02	5.81	0.96	0.12	0.16	4.59	0.19	67.31	III		
											IV		
											V		

TABLE 10.- WORKING HOURS PER WEEK OF EMPLOYEES
BY INDUSTRY AND SEX - ORIGINAL DATA

Industry										
לא ידוע	ארגונים וגופים חוץ-מדינתיים	משקי בית כמעסיקים	שירותים אחרים	אמנות, בידור ופנאי	שירותי בריאות, רווחה וסעד	חינוך	מנהל מקומי, ציבורי ובטיחות וביטוח לאומי	שירותי ניהול ותמיכה	שירותים מקצועיים, מדעיים וטכניים	פעילות במדלן
Unknown	Extraterritorial organizations and bodies	Households as employers	Other service activities	Arts, entertainment and recreation	Human health and social work activities	Education	Local, public and defence administration and social security	Administrative and support service activities	Professional, scientific and technical activities	Real estate activities
X	U	T	S	R	Q	P	O	N	M	L
3.97	0.08	2.48	2.09	1.27	13.69	13.68	18.54	4.81	8.98	0.57
3.86	0.06	2.31 R	2.19	1.37	14.22 R	14.55	18.72 R	4.85 R	8.48	0.61
4.04	0.11	2.05	2.30	1.23	14.79	17.00	18.19	5.17	8.53	0.63
3.41	0.02	2.30	2.79	1.20	15.06	16.18	18.43	5.31	8.72	0.53
3.73	0.03	2.36	2.52	1.17	15.19	15.35	17.90	4.85	9.33	0.76
3.50	0.05	2.18	2.21	0.92	12.77	12.11	17.76	4.54	8.07	0.61
3.36	0.07	2.21	1.92	1.27	13.55	14.82	18.25	4.61	8.17	0.70
3.86	0.08	2.23	2.04	1.38	14.38	15.71	18.19	3.89	7.90	0.64
3.98	0.05	2.36	2.19	1.76	15.66	11.40	18.83	5.31	8.43	0.60
3.84	0.07	2.33	2.32	1.76	13.77	8.59	19.99	4.96	8.83	0.67
4.41	0.06	2.39 R	2.23 R	1.58	14.39 R	16.54 R	20.27 R	4.67	8.85 R	0.58
3.07 R	0.04	2.02 R	1.60 R	1.38 R	12.36 R	12.28 R	18.24 R	4.05	6.60 R	0.46 R
4.11 R	0.07	2.57 R	2.08 R	1.35 R	14.29 R	17.42	19.26 R	5.37	9.11 R	0.60
5.04	0.08	2.69 R	2.13 R	1.43 R	14.46 R	17.19 R	19.33 R	5.49	9.23 R	0.54
4.49 R	0.09	2.65 R	1.97 R	1.40 R	14.56 R	16.81 R	18.77 R	5.62	8.97 R	0.59 R
4.15	0.03	2.47	2.27	1.09	16.00 R	17.23 R	20.34 R	5.91	9.31 R	0.60
4.55	0.03	2.39	2.43	1.36	15.28	17.00	20.40	5.46	9.22	0.94
2.43	0.04	0.50	0.91	0.73	3.33	3.65	10.86	2.88	4.61	0.34
2.30	0.03	0.41	0.95	0.75	3.48	3.67	10.98 R	2.92 R	4.30	0.32
2.25 ..		0.49	0.97	0.69	3.39	4.20	10.44	3.05	4.15	0.32
1.83	0.00	0.34	1.17	0.62	3.38	4.06	10.53	3.17	4.20	0.31
2.05	0.02	0.36	1.03	0.59	3.88	3.65	10.53	2.78	4.53	0.43
2.24	0.05	0.42	0.92	0.53	3.34	3.15	10.86	2.71	4.05	0.29
2.16	0.07	0.38	0.83	0.73	3.30	3.57	10.78	2.68	4.25	0.36
2.41	0.08	0.43	0.86	0.85	3.42	4.10	10.81	2.38	4.17	0.34
2.44	0.04	0.59	1.00	1.02	3.87	3.46	10.81	3.42	4.38	0.26
2.24	0.06	0.44	0.95	0.94	3.46	2.50	11.55	3.16	4.47	0.33
2.58	0.03	0.35	1.04 R	0.83	3.61 R	4.07 R	12.17 R	2.86 R	4.52	0.34
1.96	..	0.38	0.65	0.73 R	3.00 R	3.15 R	10.79 R	2.37 R	3.32 R	0.24 R
2.49 R	..	0.40	1.05	0.72 R	3.50 R	4.18 R	11.05 R	3.24 R	4.63 R	0.31
2.97	..	0.41 R	0.98	0.80 R	3.64 R	3.93 R	11.44 R	3.28 R	4.94 R	0.32
2.97 R	0.02	0.37 R	0.94	0.76 R	4.08 R	4.00 R	11.08 R	3.30 R	4.66 R	0.36
2.46 R	0.02	0.33	0.86	0.66	4.22 R	4.07 R	11.79 R	3.70	4.86 R	0.32
2.59	0.03	0.30	0.98	0.87	3.57	4.21	11.83	3.55	4.89	0.45
1.53	0.04	1.98	1.18	0.53	10.35	10.03	7.69	1.94	4.36	0.23
1.56	0.03	1.89	1.24	0.62	10.74	10.88	7.74 R	1.93	4.18	0.29
1.79	0.10	1.56	1.33	0.54	11.40	12.80	7.75	2.12	4.38	0.31
1.59	0.02	1.96	1.62	0.58	11.68	12.12	7.90	2.14	4.52	0.23
1.68 ..		2.01	1.49	0.58	11.31	11.70	7.37	2.08	4.79	0.33
1.27 ..		1.77	1.29	0.39	9.43	8.96	6.89	1.84	4.03	0.32
1.20 ..		1.83	1.08	0.55	10.25	11.26	7.47	1.93	3.92	0.34
1.45 ..		1.80	1.18	0.53	10.97	11.61	7.38	1.51	3.73	0.30
1.54		1.77	1.19	0.75	11.79	7.94	8.03	1.89	4.06	0.34
1.60 ..	0.01	1.89	1.36	0.82	10.31	6.09	8.45	1.80	4.36	0.34
1.83	0.03	2.04 R	1.19	0.75	10.78 R	12.47 R	8.10 R	1.81	4.33	0.24
1.11 R	0.04	1.64 R	0.95 R	0.66 R	9.36 R	9.13 R	7.44 R	1.67	3.28 R	0.22
1.62 R	0.07	2.17 R	1.03 R	0.63	10.79 R	13.24 R	8.21	2.14 R	4.48 R	0.29
2.07	0.08	2.28 R	1.15 R	0.63 R	10.82 R	13.26 R	7.89 R	2.21	4.28 R	0.22
1.53 R	0.07	2.28 R	1.04 R	0.64 R	10.48 R	12.81 R	7.69 R	2.32	4.31 R	0.23 R
1.69 ..		2.14 R	1.41	0.42	11.78 R	13.16 R	8.55 R	2.21 R	4.45	0.28
1.95 ..		2.09	1.45	0.49	11.72	12.79	8.57	1.91	4.33	0.49

TABLE 11.- WORKING HOURS PER WEEK OF EMPLOYED PERSONS
BY OCCUPATION AND SEX - ORIGINAL DATA

לוח 11- שעות עבודה שבוע של מועסקים
לפי משלה די ומין נתונים מקוריים

Occupation		משלה די							סך הכל ⁽¹⁾	מיליונים	סך הכל	שנה
לא ידוע	עובדים בלתי מקצועיים	עובדים מקצועיים בתעשייה ובבנייה ועובדים מקצועיים אחרים	עובדים מקצועיים בחקלאות, ביעור וביג	עובדי מכרות ושיירות	פקידים כלליים ועובדי משרד	הנדסאים, טכנאים, סוכנים ובעלי משלה די מלווה	בעלי משלה די אקדמי	מנהלים				
Unknown	Elementary occupations	Skilled workers in manufacturing and construction, and other skilled workers	Skilled agricultural, forestry and fishery workers	Service and sales workers	Clerical support workers	Practical engineers, technicians, agents, and associate professionals	Professionals	Managers	Total ⁽¹⁾			
X	9	7-8	6	5	4	3	2	1				
12.48	6.47	20.22	1.15	23.91	8.83	20.97	44.46	13.21	151.72	I-XII	2023	
12.46 R	6.82 R	20.16 R	1.19 R	24.80 R	8.85	21.24 R	44.29 R	12.46	152.26 R	I-XII	2024	
11.84	6.25	20.25	0.89	25.02	9.06	21.89	48.35	13.51	157.07	I	2024	
11.80	6.89	20.85	1.22	25.40	9.08	22.44	47.98	12.83	158.48	II		
11.74	5.91	20.76	1.33	26.05	9.37	23.36	47.19	13.09	158.79	III		
11.20	6.90	16.91	1.06	23.01	8.35	18.69	38.47	11.78	136.38	IV		
11.90	7.37	19.75	1.35	24.71	8.26	19.31	42.44	12.61	147.71	V		
12.20	7.21	19.63	1.27	24.27	8.27	20.30	45.17	13.03	151.35	VI		
13.04	7.52	21.78	1.31	25.55	9.45	22.94	42.94	13.26	157.79	VII		
13.28	7.08	20.58	1.44	24.01	9.74	23.06	38.84	12.18	150.20	VIII		
13.47 R	6.43 R	21.11 R	0.99	25.17 R	9.10 R	22.31 R	47.05 R	12.71 R	158.33 R	IX		
12.30 R	5.98 R	16.84 R	1.11 R	21.86 R	7.23	17.70 R	35.10 R	9.41	127.54 R	X		
13.31 R	6.86 R	21.16 R	1.16 R	26.03 R	9.13 R	20.88 R	49.50 R	12.22 R	160.24 R	XI		
13.42 R	7.37 R	22.31 R	1.11 R	26.55 R	9.13 R	21.97 R	48.40 R	12.93 R	163.19 R	XII		
13.52 R	7.46 R	22.56 R	1.20 R	26.59 R	8.50 R	21.41 R	48.57 R	12.69 R	162.50 R	I	2025	
13.69 R	7.35 R	21.75 R	1.06	26.40 R	8.99 R	23.64 R	50.72 R	12.85 R	166.44 R	II		
13.71	7.47	21.16	1.05	26.52	8.83	23.71	49.50	13.45	165.40	III		
										IV		
										V		
										VI		
										VII		
										VIII		
										IX		
										X		
										XI		
										XII		
										גברים		
7.62	3.62	18.80	1.08	10.46	2.99	9.83	22.11	9.44	85.96	I-XII	2023	
7.63	3.96 R	18.70 R	1.10 R	10.52 R	3.18 R	9.92 R	21.64	8.75	85.40 R	I-XII	2024	
6.97	3.52	18.95	0.86	11.06	3.40	9.72	22.86	9.31	86.64	I	2024	
6.96	3.68	19.36	1.12	10.81	3.73	10.63	22.79	8.78	87.86	II		
6.82	3.20	19.38	1.22	10.65	3.70	11.47	22.42	9.21	88.07	III		
7.02	3.96	15.81	0.97	10.11	3.57	9.10	18.73	8.04	77.32	IV		
7.39	4.06	18.00	1.18	10.26	3.01	9.25	20.34	9.01	82.50	V		
7.59	4.22	17.96	1.13	9.98	2.69	9.72	22.19	9.13	84.61	VI		
7.98	4.50	19.95	1.25	10.86	3.12	11.26	21.97	9.48	90.37	VII		
8.30	3.87	18.93	1.38	10.79	3.28	11.19	20.39	8.89	87.03	VIII		
8.84 R	3.69 R	19.62 R	0.98	10.64 R	2.98	10.14 R	22.87 R	9.00 R	88.76 R	IX		
7.70 R	3.62 R	15.77 R	1.05 R	9.26 R	2.27 R	7.84 R	17.36 R	6.85 R	71.73 R	X		
8.14 R	4.33 R	19.67 R	1.05 R	11.03 R	3.12 R	8.92 R	24.23 R	8.27 R	88.77 R	XI		
7.89 R	4.81 R	21.03 R	0.99 R	10.81 R	3.24 R	9.75 R	23.51 R	9.06 R	91.09 R	XII		
8.48 R	4.47 R	21.13 R	1.09 R	11.14 R	3.03 R	9.61 R	23.62 R	8.83 R	91.40 R	I	2025	
8.56 R	4.23 R	20.31 R	0.96 R	11.49 R	3.32 R	10.92 R	24.03 R	8.77 R	92.59 R	II		
8.50	4.35	19.80	0.94	10.94	3.38	11.02	23.31	9.21	91.45	III		
										IV		
										V		
										VI		
										VII		
										VIII		
										IX		
										X		
										XI		
										XII		
										נשים		
4.86	2.85	1.42	0.07	13.45	5.84	11.14	22.36	3.77	65.76	I-XII	2023	
4.82	2.86 R	1.46 R	0.09	14.28 R	5.67 R	11.32 R	22.65 R	3.71	66.86 R	I-XII	2024	
4.87	2.73	1.30	0.04	13.96	5.67	12.16	25.50	4.20	70.43	I	2024	
4.84	3.21	1.49	0.10	14.59	5.35	11.81	25.19	4.05	70.62	II		
4.93	2.70	1.38	0.11	15.39	5.67	11.89	24.76	3.88	70.71	III		
4.18	2.94	1.09	0.09	12.90	4.78	9.60	19.74	3.74	59.06	IV		
4.51	3.31	1.75	0.17	14.45	5.25	10.06	22.10	3.60	65.20	V		
4.60	2.99	1.67	0.15	14.29	5.58	10.58	22.98	3.90	66.74	VI		
5.05	3.02	1.83	0.06	14.69	6.33	11.68	20.98	3.78	67.43	VII		
4.98	3.22	1.65	0.05	13.21	6.46	11.87	18.44	3.29	63.18	VIII		
4.63 R	2.74 R	1.49	0.01	14.52 R	6.12 R	12.18 R	24.17 R	3.71	69.57 R	IX		
4.59 R	2.36 R	1.07 R	0.06	12.61 R	4.96 R	9.86 R	17.74 R	2.56 R	55.81 R	X		
5.16 R	2.53 R	1.49 R	0.11	15.00 R	6.01 R	11.95 R	25.27 R	3.95 R	71.47 R	XI		
5.53 R	2.56 R	1.28 R	0.12	15.74 R	5.89 R	12.22 R	24.89 R	3.87 R	72.10 R	XII		
5.04 R	2.99 R	1.43 R	0.11	15.45 R	5.47 R	11.80 R	24.95 R	3.86 R	71.11 R	I	2025	
5.13 R	3.12 R	1.44 R	0.10	14.91	5.67 R	12.72 R	26.69 R	4.08 R	73.85 R	II		
5.21	3.12	1.36	0.11	15.58	5.45	12.69	26.19	4.23	73.94	III		
										IV		
										V		
										VI		
										VII		
										VIII		
										IX		
										X		
										XI		
										XII		



מלשנת המדינה למסטיסטיקה
Central Bureau of Statistics
دائرة الإحصاء المركزية

TABLE 12- WORKING HOURS PER WEEK OF EMPLOYEES
BY OCCUPATION AND SEX - ORIGINAL DATA

לוח 12- שעות עבודה בשבוע של שכירים
לפי משלח יד ומין נתונים מקוריים

מלשח יד									סך הכל ⁽¹⁾	מיליונים	סך הכל	
לא ידוע	עובדים ביתי מקצועיים	עובדים מקצועיים בתעשייה ובבנייה ועובדים מקצועיים אחרים	עובדים מקצועיים בחקלאות, בייצור ובדיג	עובדי מכרות ושירותים	פקידים כלליים ועובדי משרד	הנדסאים, טכנאים, סוכנים ובעלי משלח יד נלווה	בעלי משלח יד מקדמי	מנהלים				
Unknown	Elementary occupations	Skilled workers in manufacturing and construction, and other skilled workers	Skilled agricultural, forestry and fishery workers	Service and sales workers	Clerical support workers	Practical engineers, technicians, agents, and associate professionals	Professionals	Managers	Total ⁽¹⁾			
X	9	7-8	6	5	4	3	2	1				
12.33	6.31	16.37	0.64	20.89	8.62	18.17	39.03	11.09	133.46	I-XII	2023	
12.34 R	6.62 R	16.27 R	0.66 R	21.64 R	8.66	18.31 R	38.64	10.51 R	133.65 R	I-XII	2024	
11.78	6.07	16.76	0.53	21.72	8.85	18.79	42.45	11.42	138.38	I	2024	
11.78	6.68	16.97	0.72	22.28	8.86	19.23	42.08	10.95	139.54	II		
11.59	5.68	16.66	0.67	22.66	9.11	19.91	41.14	10.76	138.18	III		
11.12	6.72	13.71	0.58	20.16	8.09	15.56	33.61	10.17	119.72	IV		
11.86	7.26	15.77	0.71	21.81	8.06	16.47	36.70	10.31	128.96	V		
12.08	7.02	15.65	0.67	21.03	8.17	17.54	39.44	10.86	132.47	VI		
12.91	7.28	17.20	0.82	22.45	9.32	19.85	36.39	11.18	137.42	VII		
13.13	6.91	16.60	0.95	20.89	9.49	20.18	33.58	10.31	132.05	VIII		
13.33 R	6.24 R	17.03 R	0.51	21.99 R	8.94 R	19.43 R	41.41 R	10.84 R	139.70 R	IX		
12.20 R	5.74 R	13.68 R	0.61 R	19.02 R	7.05	15.53 R	30.93 R	7.89	112.65 R	X		
13.12 R	6.66 R	16.96 R	0.57 R	22.61 R	8.95 R	18.17 R	43.45 R	10.48 R	140.96 R	XI		
13.23 R	7.12 R	18.27 R	0.57 R	23.07 R	9.02 R	19.04 R	42.51 R	10.91 R	143.73 R	XII		
13.26 R	7.21 R	18.23 R	0.51 R	23.06 R	8.34 R	18.68 R	42.45 R	10.73 R	142.47 R	I	2025	
13.59 R	7.11 R	17.65 R	0.56 R	22.94 R	8.85 R	20.57 R	44.63 R	11.35 R	147.26 R	II		
13.58	7.25	17.04	0.55	22.66	8.65	20.47	43.38	11.59	145.16	III		
										IV		
										V		
										VI		
										VII		
										VIII		
										IX		
										X		
										XI		
										XII		
										גברים		
7.53	3.53	15.16	0.59	8.93	2.91	7.92	18.97	7.62	73.16	I-XII	2023	
7.56 R	3.84 R	14.99 R	0.61	9.02	3.09	7.90	18.31 R	7.06	72.38 R	I-XII	2024	
6.92	3.41	15.55	0.50	9.29	3.29	7.67	19.51	7.51	73.66	I	2024	
6.95	3.57	15.64	0.67	9.19	3.63	8.50	19.27	7.14	74.57	II		
6.74	3.12	15.48	0.65	9.02	3.54	8.97	18.81	7.12	73.45	III		
7.00	3.91	12.74	0.53	8.72	3.46	6.82	15.96	6.75	65.89	IV		
7.35	4.01	14.27	0.63	8.92	2.92	7.20	17.09	7.06	69.46	V		
7.56	4.05	14.21	0.60	8.55	2.64	7.81	18.77	7.36	71.54	VI		
7.88	4.34	15.65	0.79	9.60	3.05	9.15	18.02	7.69	76.18	VII		
8.22	3.77	15.09	0.92	9.05	3.17	9.07	17.15	7.23	73.67	VIII		
8.70 R	3.55 R	15.79 R	0.51	9.28 R	2.88	8.15 R	19.50 R	7.36 R	75.72 R	IX		
7.64 R	3.47 R	12.68 R	0.56 R	7.97 R	2.19 R	6.31	14.90 R	5.44 R	61.16 R	X		
8.01 R	4.23 R	15.63 R	0.49 R	9.35 R	3.06 R	7.29 R	20.59 R	6.69 R	75.35 R	XI		
7.77 R	4.64 R	17.14 R	0.46 R	9.28 R	3.20 R	7.91 R	20.19 R	7.35 R	77.93 R	XII		
8.37 R	4.29 R	16.95 R	0.46 R	9.54 R	2.94 R	7.88 R	20.09 R	7.14 R	77.66 R	I	2025	
8.48 R	4.07 R	16.41 R	0.51 R	9.81 R	3.27 R	8.91 R	20.61 R	7.40 R	79.48 R	II		
8.40	4.22	15.96	0.51	9.16	3.33	8.91	19.76	7.61	77.85	III		
										IV		
										V		
										VI		
										VII		
										VIII		
										IX		
										X		
										XI		
										XII		
										נשים		
4.81	2.78	1.21	0.05	11.96	5.71	10.25	20.06	3.47	60.30	I-XII	2023	
4.78	2.78 R	1.28	0.05	12.62 R	5.57 R	10.41 R	20.33 R	3.45	61.26 R	I-XII	2024	
4.85	2.66	1.21	0.03	12.44	5.55	11.12	22.94	3.91	64.72	I	2024	
4.83	3.11	1.33	0.04	13.08	5.23	10.73	22.81	3.80	64.97	II		
4.85	2.56	1.18	0.02	13.64	5.57	10.94	22.34	3.64	64.73	III		
4.12	2.81	0.97	0.05	11.44	4.62	8.74	17.64	3.42	53.83	IV		
4.50	3.25	1.50	0.08	12.89	5.14	9.27	19.61	3.25	59.49	V		
4.53	2.97	1.44	0.07	12.48	5.53	9.74	20.88	3.50	60.94	VI		
5.03	2.94	1.56	0.03	12.85	6.27	10.70	18.37	3.49	61.24	VII		
4.91	3.14	1.52	0.03	11.84	6.33	11.11	16.43	3.07	58.38	VIII		
4.63 R	2.68 R	1.23	0.00	12.71 R	6.05 R	11.28 R	21.90	3.48	63.98 R	IX		
4.56	2.27 R	1.00 R	0.04	11.05 R	4.86 R	9.22 R	16.03 R	2.45 R	51.49 R	X		
5.11 R	2.43 R	1.33 R	0.08	13.26 R	5.88 R	10.88 R	22.86 R	3.79 R	65.61 R	XI		
5.46 R	2.48 R	1.13 R	0.11	13.79 R	5.82 R	11.13 R	22.32 R	3.56 R	65.80 R	XII		
4.90 R	2.92 R	1.28 R	0.06	13.51 R	5.40 R	10.80 R	22.36 R	3.59 R	64.81 R	I	2025	
5.11 R	3.04 R	1.25 R	0.05	13.14 R	5.58 R	11.66 R	24.03 R	3.95 R	67.79 R	II		
5.18	3.03	1.09	0.04	13.50	5.31	11.56	23.62	3.98	67.31	III		
										IV		
										V		
										VI		
										VII		
										VIII		
										IX		
										X		
										XI		
										XII		

TABLE 14 - Unemployed persons by the economic activity of the last place of work and sex original data (1)

לוח 14 - בלתי מועסקים לפי ענף כלכלי אחרון שבו עבדו ומין נתונים מקוריים (1)

Thousands		מרץ 2025	פברואר 2025 R	מרץ 2024	אלפים	
		March 2025	February 2025 R	March 2024		
TOTAL		117.8	123.4	138.8	סך הכל	
Stopped working at their last job more than 2 years ago or didn't work at all		31.8	34.4	33.2	הפסיקו את עבודתם האחרונה לפני יותר משנתיים או לא עבדו כלל	
Stopped working at their last job during the last two years (2)		86.0	89.0	105.6	הפסיקו את עבודתם האחרונה בשנתיים האחרונות (2)	
In Public Sector by industry definition (3) (5)		13.4	16.5	18.9	במגזר ציבורי לפי הגדרה ענפית (3) (5)	
Not in Public Sector by industry definition (4) (5)		72.5	72.4	86.8	לא במגזר ציבורי לפי הגדרה ענפית (4) (5)	
INDUSTRY (5)					ענף כלכלי (5)	
A	Agriculture, forestry and fishing	1.0	1.6	..	חקלאות, ייעור ודיג	A
B-C	Manufacturing; Mining and quarrying	7.1	5.6	9.5	תעשייה; כרייה ותצורה	B-C
D	Electricity supply	-	-	-	אספקת חשמל	D
E	Water supply, sewerage and waste management	(0.7)	(0.6)	..	אספקת מים, שירותי ביוב וטיהור וטיפול בפסולת	E
F	Construction	6.6	3.1	8.2	בנייה	F
G	Wholesale and retail trade and repair of motor vehicles	8.5	6.7	12.5	מסחר סיוטוני וקמעוני ותיקון כלי רכב מנועים	G
H	Transportation, storage, postal and courier activities	2.0	4.1	4.9	שירותי תחבורה, אחסנה, דואר ובלדרות	H
I	Accommodation and food service activities	7.5	6.9	5.7	שירותי אירוח ואוכל	I
J	Information and communications	6.0	7.8	8.4	מידע ותקשורת	J
K	Financial and insurance activities	1.9	1.3	2.8	שירותים פיננסיים ושירותי ביטוח	K
L	Real estate activities	-	2.0	(0.7)	פעילויות נדל"ן	L
M	Professional, scientific and technical activities	6.9	5.9	8.6	שירותים מקצועיים, מדעיים וטכניים	M
N	Administrative and support service activities	5.8	8.1	6.5	שירותי ניהול ותמיכה	N
O	Local, public and defence administration and social security	5.1	5.9	7.8	מנהל מקומי, ציבורי וביטחון וביטוח לאומי	O
P	Education	11.0	10.8	6.5	חינוך	P
Q	Human health and social work activities	3.3	6.4	14.4	שירותי בריאות, רווחה וסעד	Q
R	Arts, entertainment and recreation	..	(0.9)	2.0	אמנות, בידור ופנאי	R
S	Other service activities	2.0	3.5	1.9	שירותים אחרים	S
T	Households as employers	(0.7)	(0.8)	..	משקי בית כמעסיקים	T
Men		60.0	59.8	80.1	גברים	
Stopped working at their last job more than 2 years ago or didn't work at all		14.1	15.8	19.5	הפסיקו את עבודתם האחרונה לפני יותר משנתיים או לא עבדו כלל	
Stopped working at their last job during the last two years (2)		45.9	44.0	60.6	הפסיקו את עבודתם האחרונה בשנתיים האחרונות (2)	
In Public Sector by industry definition (3) (5)		6.4	6.7	7.6	במגזר ציבורי לפי הגדרה ענפית (3) (5)	
Not in Public Sector by industry definition (4) (5)		39.5	38.3	53.0	לא במגזר ציבורי לפי הגדרה ענפית (4) (5)	
INDUSTRY (5)					ענף כלכלי (5)	
A	Agriculture, forestry and fishing	1.0	1.0	..	חקלאות, ייעור ודיג	A
B-C	Manufacturing; Mining and quarrying	3.9	4.7	7.2	תעשייה; כרייה ותצורה	B-C
D	Electricity supply	-	-	-	אספקת חשמל	D
E	Water supply, sewerage and waste management	(0.7)	(0.6)	..	אספקת מים, שירותי ביוב וטיהור וטיפול בפסולת	E
F	Construction	5.5	2.2	7.7	בנייה	F
G	Wholesale and retail trade and repair of motor vehicles	3.8	3.4	7.1	מסחר סיוטוני וקמעוני ותיקון כלי רכב מנועים	G
H	Transportation, storage, postal and courier activities	1.9	3.3	3.9	שירותי תחבורה, אחסנה, דואר ובלדרות	H
I	Accommodation and food service activities	2.8	5.6	4.2	שירותי אירוח ואוכל	I
J	Information and communications	4.1	3.8	5.9	מידע ותקשורת	J
K	Financial and insurance activities	(0.8)	..	1.0	שירותים פיננסיים ושירותי ביטוח	K
L	Real estate activities	-	2.0	..	פעילויות נדל"ן	L
M	Professional, scientific and technical activities	2.2	1.7	4.2	שירותים מקצועיים, מדעיים וטכניים	M
N	Administrative and support service activities	3.8	5.9	4.3	שירותי ניהול ותמיכה	N
O	Local, public and defence administration and social security	3.2	4.0	3.3	מנהל מקומי, ציבורי וביטחון וביטוח לאומי	O
P	Education	3.6	1.7	1.7	חינוך	P
Q	Human health and social work activities	1.3	1.1	4.1	שירותי בריאות, רווחה וסעד	Q
R	Arts, entertainment and recreation	..	-	2.0	אמנות, בידור ופנאי	R
S	Other service activities	..	-	1.4	שירותים אחרים	S
T	Households as employers	-	-	..	משקי בית כמעסיקים	T
Women		57.7	63.5	58.6	נשים	
Stopped working at their last job more than 2 years ago or didn't work at all		17.7	18.6	13.7	הפסיקו את עבודתם האחרונה לפני יותר משנתיים או לא עבדו כלל	
Stopped working at their last job during the last two years (2)		40.0	44.9	45.0	הפסיקו את עבודתם האחרונה בשנתיים האחרונות (2)	
In Public Sector by industry definition (3) (5)		7.1	10.8	11.2	במגזר ציבורי לפי הגדרה ענפית (3) (5)	
Not in Public Sector by industry definition (4) (5)		33.0	34.1	33.8	לא במגזר ציבורי לפי הגדרה ענפית (4) (5)	
INDUSTRY (5)					ענף כלכלי (5)	
A	Agriculture, forestry and fishing	-	(0.6)	-	חקלאות, ייעור ודיג	A
B-C	Manufacturing; Mining and quarrying	3.3	(0.9)	2.3	תעשייה; כרייה ותצורה	B-C
D	Electricity supply	-	-	-	אספקת חשמל	D
E	Water supply, sewerage and waste management	-	-	-	אספקת מים, שירותי ביוב וטיהור וטיפול בפסולת	E
F	Construction	1.1	(0.9)	(0.5)	בנייה	F
G	Wholesale and retail trade and repair of motor vehicles	4.7	3.3	5.4	מסחר סיוטוני וקמעוני ותיקון כלי רכב מנועים	G
H	Transportation, storage, postal and courier activities	..	(0.8)	1.0	שירותי תחבורה, אחסנה, דואר ובלדרות	H
I	Accommodation and food service activities	4.8	1.3	1.6	שירותי אירוח ואוכל	I
J	Information and communications	1.9	4.0	2.5	מידע ותקשורת	J
K	Financial and insurance activities	1.2	1.0	1.7	שירותים פיננסיים ושירותי ביטוח	K
L	Real estate activities	-	-	-	פעילויות נדל"ן	L
M	Professional, scientific and technical activities	4.7	4.1	4.4	שירותים מקצועיים, מדעיים וטכניים	M
N	Administrative and support service activities	2.0	2.2	2.2	שירותי ניהול ותמיכה	N
O	Local, public and defence administration and social security	2.0	1.9	4.5	מנהל מקומי, ציבורי וביטחון וביטוח לאומי	O
P	Education	7.4	9.1	4.9	חינוך	P
Q	Human health and social work activities	2.0	5.3	10.3	שירותי בריאות, רווחה וסעד	Q
R	Arts, entertainment and recreation	-	(0.9)	-	אמנות, בידור ופנאי	R
S	Other service activities	1.6	3.5	(0.5)	שירותים אחרים	S
T	Households as employers	(0.7)	(0.8)	-	משקי בית כמעסיקים	T

(1) Excl. persons living outside localities (Bedouins in the South) or in institutions (permanent samples).
(2) Incl. unemployed persons who worked in the industry "Extra-Territorial Organizations and Bodir (Category U), and unemployed persons who worked in industry or occupation which are not known.
(3) Incl. unemployed persons who worked in the industries: 30, 35, 36, 37, 5310, 83, 84, 850, 851, 852, 853, 854, 855, 861, 8620, 8623, 91, 944, 99.
(4) Excl. unemployed persons, who worked in industry which is not known.
(5) For those who stopped working at their last job during the last two years.

(1) אינם כלול את הגרים מחוץ ליישובים (בדווים בדרום) או במוסדות (מדגמים קבועים).
(2) כולל בלתי מועסקים שעבדו בענף "ארגונים חוץ-טריטוריאליים" (סדר U) ובלתי מועסקים שהענף הכלכלי או משלוח היד שבו עבדו אינו ידוע.
(3) כולל בלתי מועסקים שעבדו במסגרת: 30, 35, 36, 37, 5310, 83, 84, 850, 851, 852, 853, 854, 855, 861, 8620, 8623, 91, 944, 99.
(4) לא כלול מועסקים, שבהם הענף הכלכלי בו עבדו אינו ידוע.
(5) אלה שהפסיקו את עבודתם האחרונה בשנתיים האחרונות.